

**SOMERSET COUNTY
NOTICE OF ADDENDUM**

**“Colonial Park Spray Park, Franklin Township, Somerset County, New Jersey,
Contract No.17008”**

ADDENDUM NO.1

Addendum No. 1 has been issued for the bid for **Colonial Park Spray Park, Franklin Township, Somerset County, New Jersey, Contract No.17008** on **Tuesday, November 14, 2017** and has been delivered by electronic transmission to all eligible contractors who have received bid specifications.

The original bid specification packages for the above referenced project are amended as noted.

CHANGE OF BID OPENING

Date for Receipt of Bids as well as date on proposal page (P-1) are revised as follows:

FROM: Thursday, November 16, 2017 at 2:00 PM, Engineering Conference Room

TO: Tuesday, November 28, 2017 at 2:00 PM, Engineering Conference Room

CONCERNING BID SPECIFICATIONS

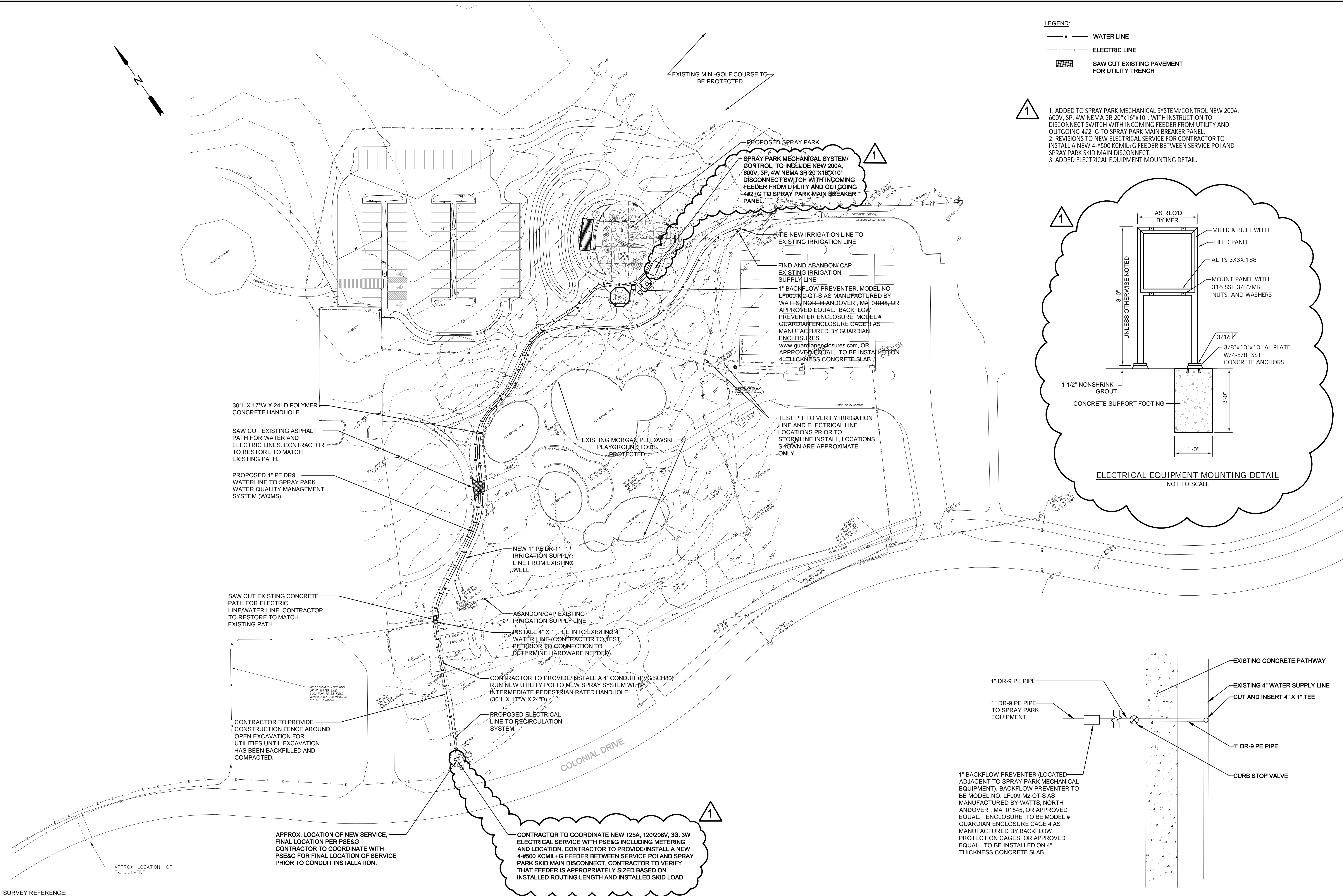
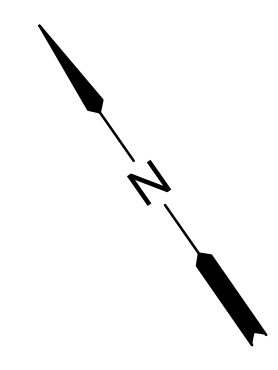
- Item 01: Contract Drawing Sheet S-5, Utility Plan is revised per the attached plan to include the Nema 3r disconnect switch. Additionally, the 3-#500 KCMIL+G feeder is revised to a 4-#500 KCMIL+G feeder from the electric service POI to the Spray Park skid main disconnect.
- Item 02: Contract Drawing Sheet L-1, Landscape Plan is revised per the attached plan to include the removal of “Stormwater Basin Plantings” from the plant schedule.

QUESTIONS AND ANSWERS:

Question 1: The solenoid valves are called out to be cast bronze. Can we provide stainless steel solenoid valves?

Answer 1: The County cannot prequalify your request for modification. Please prepare your bid response in accordance with the specifications.

Karen L. McGee, RPPO, QPA
Purchasing Agent



SURVEY REFERENCE:
 BASE TOPOGRAPHIC SURVEY PREPARED BY HATCH MOTT MACDONALD, DATED MARCH 17, 2011, UPDATED BY HATCH MOTT MACDONALD, 412 MOUNT KEMBLE RD., SUITE G22 MORRISTOWN NJ 07960, 908-730-6000, WILLIAM A. DIBARTOLO JR., NJPLS. DRAWING ENTITLED TOPOGRAPHIC SURVEY OF A PORTION OF COLONIAL PARK, DATED DECEMBER 4, 2015. THIS TOPOGRAPHIC SURVEY IS REFERENCED TO NEW JERSEY STATE PLANE COORDINATE SYSTEM NAD83 AND ELEVATION NAVD88

UTILITY PLAN
 0 40 80
 SCALE: 1" = 40'

JOSEPH J. KOEHLER Professional Engineer - N.J. Lic. No. 33876		Date Approved Checked Drawn Designed	Date Approved Checked Drawn Designed
M. MOTT MACDONALD Certificate No. 24G428016800 111 Wood Avenue South Iselin, New Jersey 08830-4112		Date Approved Checked Drawn Designed	Date Approved Checked Drawn Designed
COLONIAL PARK SPRAY PARK TOWNSHIP OF FRANKLIN SOMERSET COUNTY, NEW JERSEY		UTILITY PLAN	
Job 352844	No. S-5	B/O 6	Total 13

PLOT DATE: 11/13/2017 2:30 PM
SAVE DATE: 11/13/2017 2:29 PM

PLANT SCHEDULE

Table with 6 columns: ABR., QTY., BOTANICAL NAME, COMMON NAME, SIZE/CONTAINER, SPACING. It lists various plants categorized into TREES, SHRUBS, GRASSES, and HERBACEOUS/PERENNIALS, including quantities and spacing details.

NOTE: RAIN GARDEN SEED MIX TO BE ERNMX-127, RETENTION BASIN WILDLIFE MIX, AS MANUFACTURED BY ERNST CONSERVATION SEEDS, INC., MEADVILLE, PA. (800) 873-3321, www.ernstseed.com, OR APPROVED EQUAL.

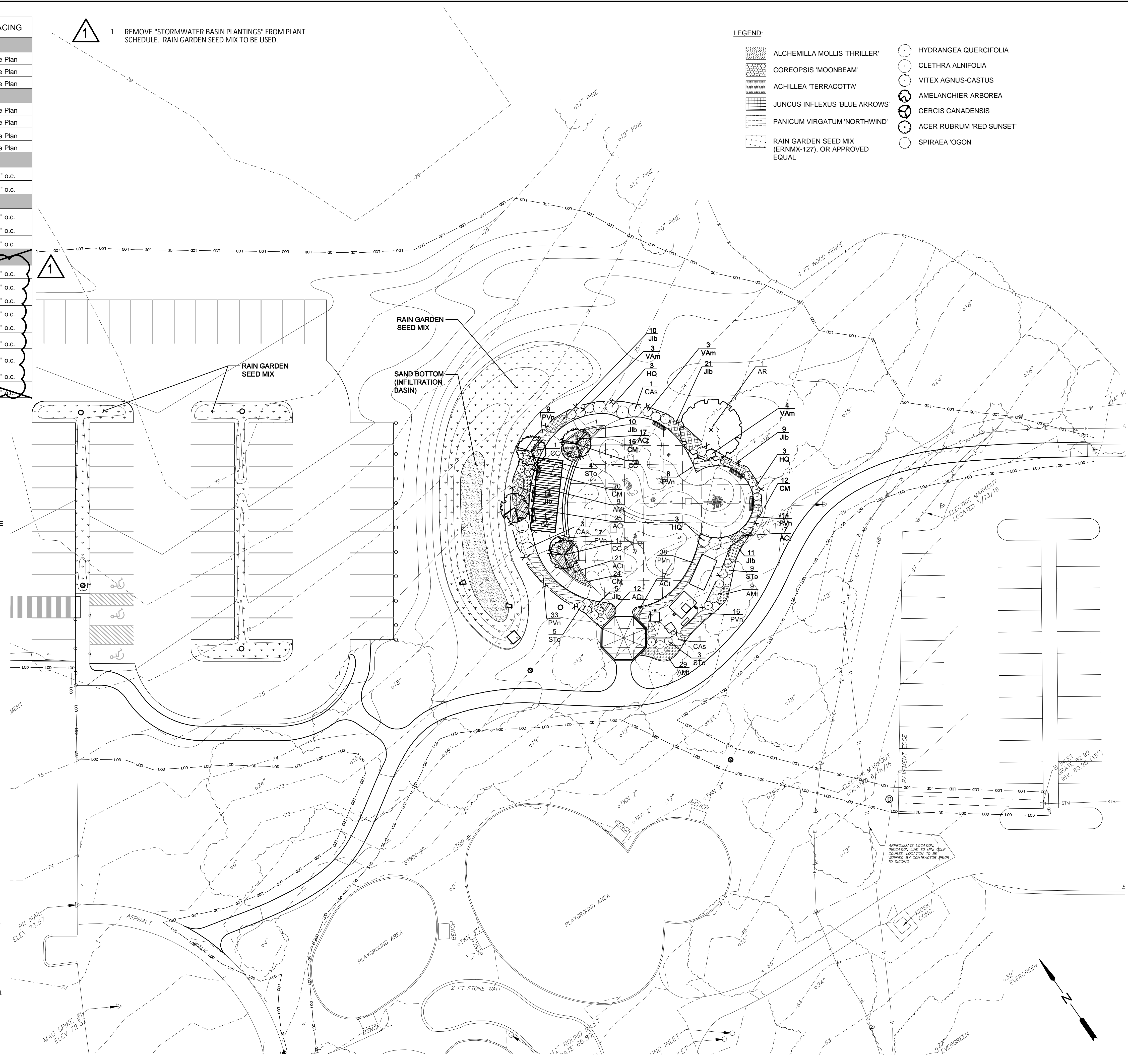
LANDSCAPE NOTES

- 1. THIS PLAN SHALL BE USED FOR LANDSCAPE PLANTING PURPOSES ONLY. EXAMINE ALL ENGINEERING DRAWINGS AND FIELD CONDITIONS FOR SPECIFIC LOCATIONS OF UTILITIES, STRUCTURES, ETC. AND NOTIFY THE PROJECT PROFESSIONAL IN REFERENCE TO ANY DISCREPANCIES OR LOCATION CONFLICTS PRIOR TO PLANTING INSTALLATION.
2. ALL PLANT MATERIAL SHALL CONFORM TO THE AMERICAN STANDARD FOR NURSERY STOCK, ANSI Z60.1 CURRENT EDITION. THE PLANT MATERIAL SHALL BE TRUE TO SPECIES, VARIETY, SIZE AND BE CERTIFIED DISEASE AND INSECT FREE. THE PROJECT PROFESSIONAL RESERVES THE RIGHT TO REJECT PLANT MATERIAL WHEN DELIVERED TO THE SITE AND UP TO THE TIME OF FINAL ACCEPTANCE.
... (Notes 3-23) ...

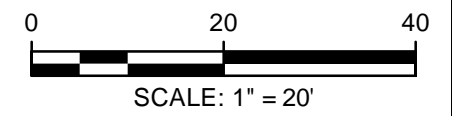
SURVEY REFERENCE:
BASE TOPOGRAPHIC SURVEY PREPARED BY HATCH MOTT MACDONALD, DATED MARCH 17, 2011, UPDATED BY HATCH MOTT MACDONALD, 412 MOUNT KEMBLE RD., SUITE G22 MORRISTOWN NJ 07960, 908-730-6000, WILLIAM A. DIBARTOLO JR., NJPLS. DRAWING ENTITLED TOPOGRAPHIC SURVEY OF A PORTION OF COLONIAL PARK, DATED DECEMBER 4, 2015. THIS TOPOGRAPHIC SURVEY IS REFERENCED TO NEW JERSEY STATE PLANE COORDINATE SYSTEM NAD83 AND ELEVATION NAVD88

1. REMOVE "STORMWATER BASIN PLANTINGS" FROM PLANT SCHEDULE. RAIN GARDEN SEED MIX TO BE USED.

LEGEND:
ALCHEMILLA MOLLIS 'THRILLER'
COREOPSIS 'MOONBEAM'
ACHILLEA 'TERRACOTTA'
JUNCUS INFLEXUS 'BLUE ARROWS'
PANICUM VIRGATUM 'NORTHWIND'
RAIN GARDEN SEED MIX (ERNMX-127), OR APPROVED EQUAL
HYDRANGEA QUERCIFOLIA
CLETHRA ALNIFOLIA
VITEX AGNUS-CASTUS
AMELANCHIER ARBOREA
CERCIS CANADENSIS
ACER RUBRUM 'RED SUNSET'
SPIRAEA 'OGON'



LANDSCAPE PLAN



P:\352844 - COLONIAL PK SPRAY PKD\LANDSCAPE PLAN_UPDATE.DWG

Professional Engineer - N.J. Lic. No. 33876
JOSEPH J. KOEHLER
Professional Engineer - N.J. Lic. No. 33876
M M MOTT MACDONALD
Certificate No. 24G428016000
111 Wood Avenue South
Iselin, New Jersey 08830-4112
Job No. 352844
No. L-1
B/O 7
Total 13
REVISIONS:
11/13/2017 10/10/2017
REVISOR: [blank]
ISSUED FOR BIDDING
Revision: [blank]