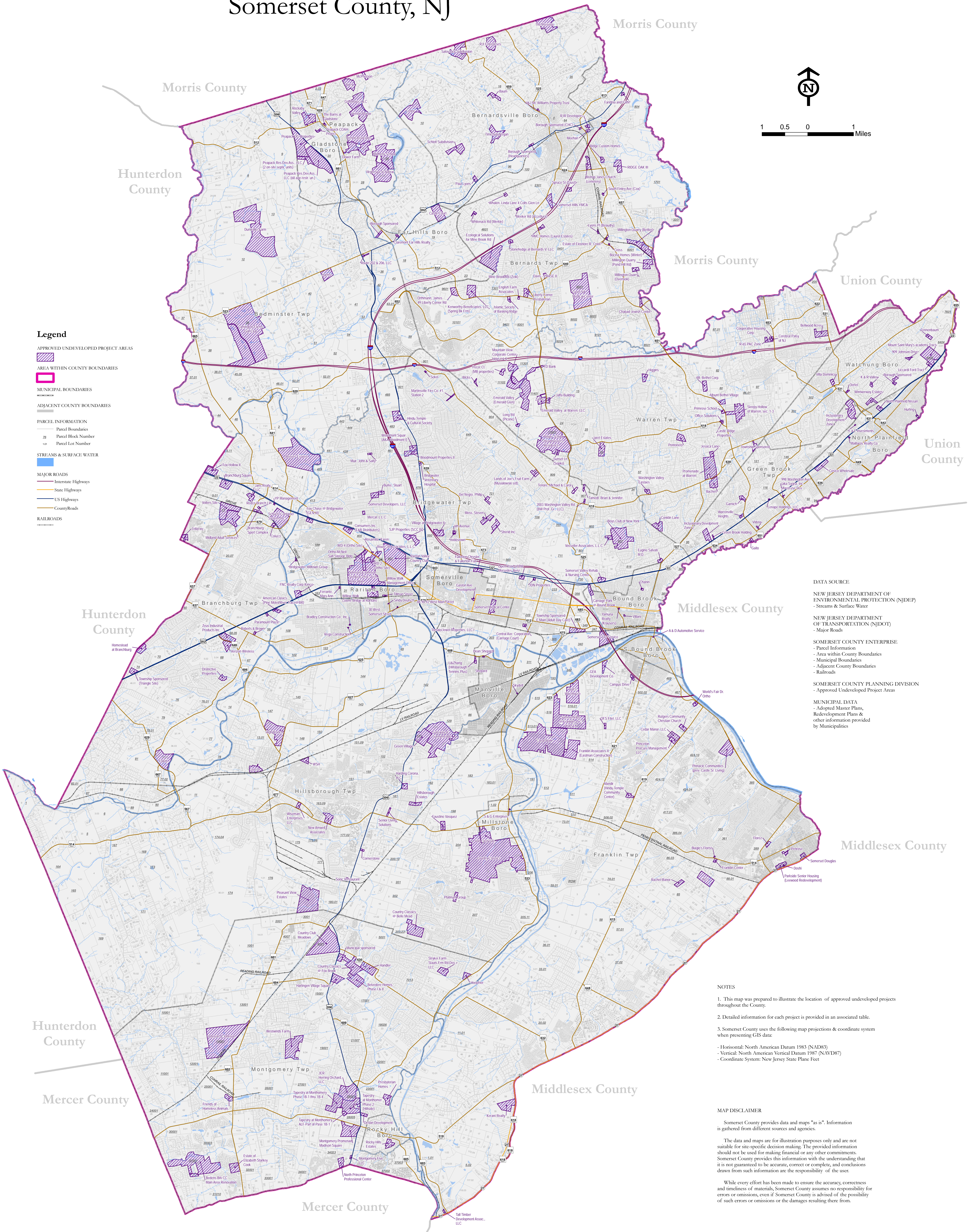
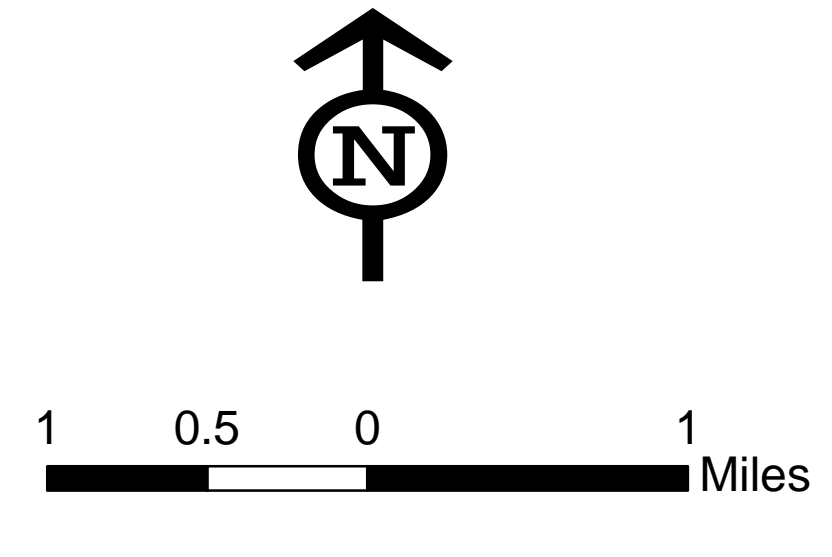


APPROVED UNDEVELOPED PROJECTS

Somerset County, NJ



- Legend**
- APPROVED UNDEVELOPED PROJECT AREAS
 - AREA WITHIN COUNTY BOUNDARIES
 - MUNICIPAL BOUNDARIES
 - ADJACENT COUNTY BOUNDARIES
 - PARCEL INFORMATION
 - Parcel Boundaries
 - Parcel Block Number
 - Parcel Lot Number
 - STREAMS & SURFACE WATER
 - MAJOR ROADS
 - Interstate Highways
 - State Highways
 - US Highways
 - County Roads
 - RAILROADS



- DATA SOURCE**
- NEW JERSEY DEPARTMENT OF ENVIRONMENTAL PROTECTION (NJDEP)
 - Streams & Surface Water
 - NEW JERSEY DEPARTMENT OF TRANSPORTATION (NJDOT)
 - Major Roads
 - SOMERSET COUNTY ENTERPRISE
 - Parcel Information
 - Area within County Boundaries
 - Municipal Boundaries
 - Adjacent County Boundaries
 - Railroads
 - SOMERSET COUNTY PLANNING DIVISION
 - Approved Undeveloped Project Areas
 - MUNICIPAL DATA
 - Adopted Master Plans, Redevelopment Plans & other information provided by Municipalities

- NOTES**
- This map was prepared to illustrate the location of approved undeveloped projects throughout the County.
 - Detailed information for each project is provided in an associated table.
 - Somerset County uses the following map projections & coordinate system when presenting GIS data:
 - Horizontal: North American Datum 1983 (NAD83)
 - Vertical: North American Vertical Datum 1987 (NAVD87)
 - Coordinate System: New Jersey State Plane Feet

MAP DISCLAIMER

Somerset County provides data and maps "as is". Information is gathered from different sources and agencies.

The data and maps are for illustration purposes only and are not suitable for site-specific decision making. The provided information should not be used for making financial or any other commitments. Somerset County provides this information with the understanding that it is not guaranteed to be accurate, correct or complete, and conclusions drawn from such information are the responsibility of the user.

While every effort has been made to ensure the accuracy, correctness and timeliness of materials, Somerset County assumes no responsibility for errors or omissions, even if Somerset County is advised of the possibility of such errors or omissions or the damages resulting there from.

