



COUNTY OF SOMERSET

Local Concept Development Study for Bridge K0607 New Brunswick Road over Al's Brook Franklin Township, Somerset County

PROJECT INFORMATION

Somerset County, in coordination with the North Jersey Transportation Planning Authority (NJTPA) and the New Jersey Department of Transportation (NJDOT), is conducting a Local Concept Development Study for the rehabilitation or replacement of Bridge K0607 New Brunswick Road over Al's Brook in Franklin Township. The location of Bridge K0607 is indicated on Figure 1, attached. The structure is classified as "Structurally Deficient" due to deformation of the arches and the need for temporary shoring to stabilize the arches. Conceptual solutions will be developed for removal of the temporary shoring and to improve the bridge classification while taking into account practical measures to avoid, minimize, or mitigate potential impacts to the built and natural environment.

Project Background

Recent inspections of the structure have classified it as "Structurally Deficient". The overall condition of the structure is in serious condition due to yielding of the aluminum structural plate arches and the resulting large deformations. Temporary shoring was installed to stabilize the arches and the deformations are monitored for movement via annual inspections. With the temporary shoring in place, the arches have been stabilized.

This project is driven by the need to restore the structural integrity of the "Structurally Deficient" bridge. The purpose of the project is to eliminate the need for the temporary shoring and the bridge's classification as "Structurally Deficient". It is the interest of Somerset County, the NJTPA, and NJDOT to determine the appropriate conceptual restoration alternatives, which will indicate whether bridge rehabilitation or replacement is needed. Through the alternatives analysis with agency coordination and community involvement, a Preliminary Preferred Alternative (PPA) will be determined so that the project can move to the design phase.

Proposed Study

This study is being advanced by Somerset County, as the Project Sponsor, utilizing federal funds with agency oversight from NJTPA, NJDOT and Federal Highway Administration (FHWA) in accordance with Federal National Environmental Policy Act (NEPA) and in compliance with the NJTPA's Local Capital Project Delivery Program.

The current phase of this project is Local Concept Development (LCD). During this phase a well-defined and well-justified Purpose and Need Statement will be developed focusing on the restoration of the structural integrity of the bridge. LCD Phase elements also include: data collection; coordination with the NJTPA, NJDOT, FHWA, local officials, stakeholders, and permitting agencies; the development of a reasonable number of sensible and practical conceptual alternatives; and the



identification of a Preliminary Preferred Alternative, based on impacts to the environment, right-of-way, traffic, access, and utilities, as well as constructability and cost.

The primary tasks of stakeholders are to assist in the development of the Project's Purpose and Need Statement, participate in the identification of conceptual alternatives and the selection of the Preliminary Preferred Alternative.

Tentative Project Schedule Milestones

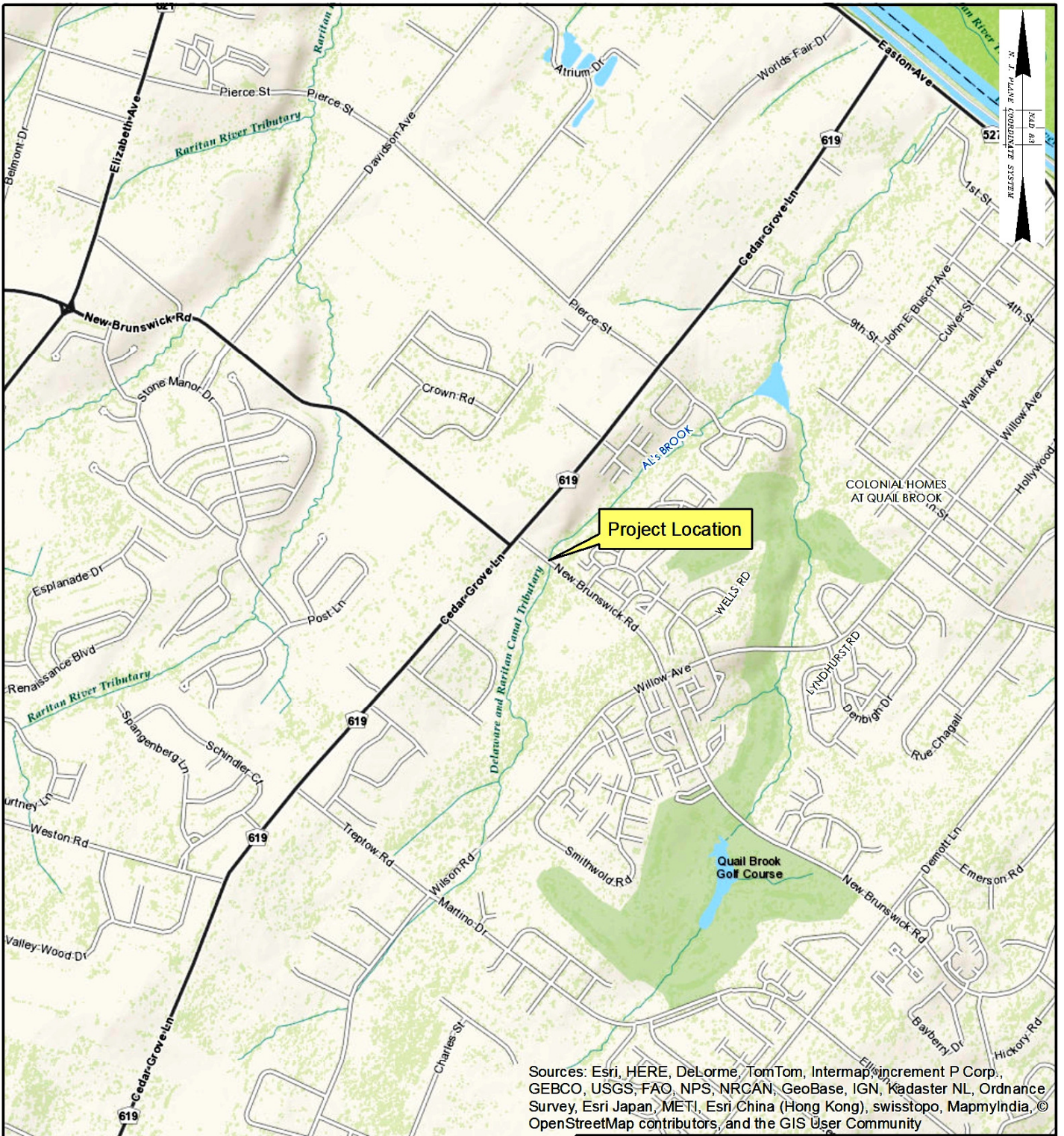
- Data Collection / Development of Purpose and Need: July 2014
- Development of Conceptual Alternatives: August 2014
- Selection of the Preliminary Preferred Alternative: October 2014
- Completion of the Local Concept Development Report: April 2015

Resolutions of Support for the Preliminary Preferred Alternative will be requested from Franklin Township and Somerset County prior to the completion of the Local Concept Development Report.

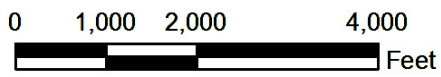
Project Contact Information

Brian W. Maurer, P.E.
Principal Bridge Engineer
Somerset County Division of Engineering, Bridge Section
P.O. Box 3000
Somerville, New Jersey 08876-1262
maurer@co.somerset.nj.us





Sources: Esri, HERE, DeLorme, TomTom, Intermap, increment P Corp., GEBCO, USGS, FAO, NPS, NRCAN, GeoBase, IGN, Kadaster NL, Ordnance Survey, Esri Japan, METI, Esri China (Hong Kong), swisstopo, MapmyIndia, © OpenStreetMap contributors, and the GIS User Community



NORTH JERSEY TRANSPORTATION PLANNING AUTHORITY

PROJECT LOCATION MAP

Somerset County Bridge K0607
 New Brunswick Road over Al's Brook
 Franklin Township, Somerset County, New Jersey

SCALE: As Shown

DATE: May 2014



FIGURE 1

Source: NJDEP and ESRI