

# PRIORITY GROWTH INVESTMENT AREAS (PGIAs) CORE AND ESSENTIAL CRITERIA Somerset County, NJ

**Notes**

**1. Somerset County PGIA Core Criteria:**

- State Planning Area 1
- Identified Centers
- Areas in Need of Redevelopment
- Colleges and Universities
- Closed Military Facilities
- Transit Villages

**2. Somerset County PGIA Essential Criteria:**

- Within a 1/2 mile of major transportation infrastructure features
- Sewer service area
- Substantially unencumbered by regulated environmental features (Including Habitats - Rank 3, 4 + 5, Wetlands, Natural Heritage Priority Sites and Class 1 Water Body Riparian Buffers)
- Water purveyor areas

3. The water purveyor areas are not displayed on this map. The entire county except for a small portion with no development potential is within a water purveyor area.

4. Every effort has been made to use the most up-to-date GIS data available. For additional information, please email the Somerset County Planning Board at: [planningbd@cosomerset.nj.us](mailto:planningbd@cosomerset.nj.us)

5. Somerset County uses the following map projection and coordinate system when presenting GIS data:

-Horizontal: North American Datum 1983 (NAD83)

-Vertical: North American Datum 1987 (NAD87)

-Coordinate System: New Jersey State Plane Feet

Raritan Valley Community College

VA Depot (Military Facility)

Somerville & Bound Brook Transit Villages

The Bound Brooks Town Center

\*The Hillsborough Town Center and Millstone Village Center meet all the qualifications for center designation but have not achieved official designation from the state Office for Planning Advocacy at this time. Somerset County recognizes these areas as centers from a planning and policy perspective.

**DATA SOURCES**

**SOMERSET COUNTY ENTERPRISE GIS DATA**

- Municipal Boundaries
- Major Roads
- Railroads & Stations

**SOMERSET COUNTY PLANNING DIVISION**

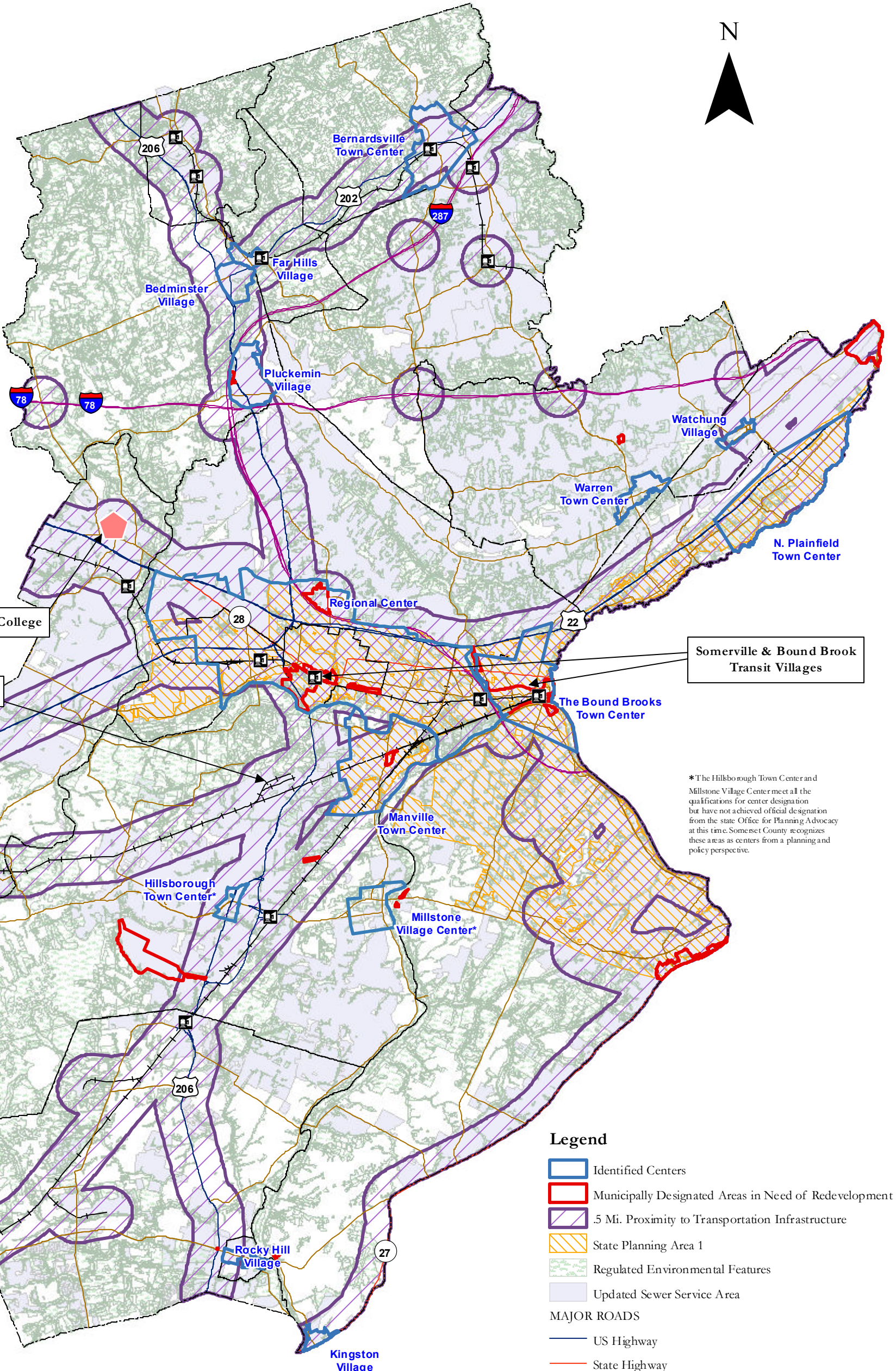
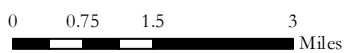
- Updated Sewer Service Area
- Areas in Need of Redevelopment
- Transportation Infrastructure Corridors

**NJ DEPARTMENT OF ENVIRONMENTAL PROTECTION**

- Regulated Environmental Features

**NJ OFFICE FOR PLANNING ADVOCACY**

- 2011 State Development and Redevelopment Plan



**Legend**

- Identified Centers
- Municipally Designated Areas in Need of Redevelopment
- .5 Mi. Proximity to Transportation Infrastructure
- State Planning Area 1
- Regulated Environmental Features
- Updated Sewer Service Area
- MAJOR ROADS**
- US Highway
- State Highway
- Interstate Highway
- County Roads
- Rail Stations (Existing & Proposed)
- Railroad
- Municipal Boundaries