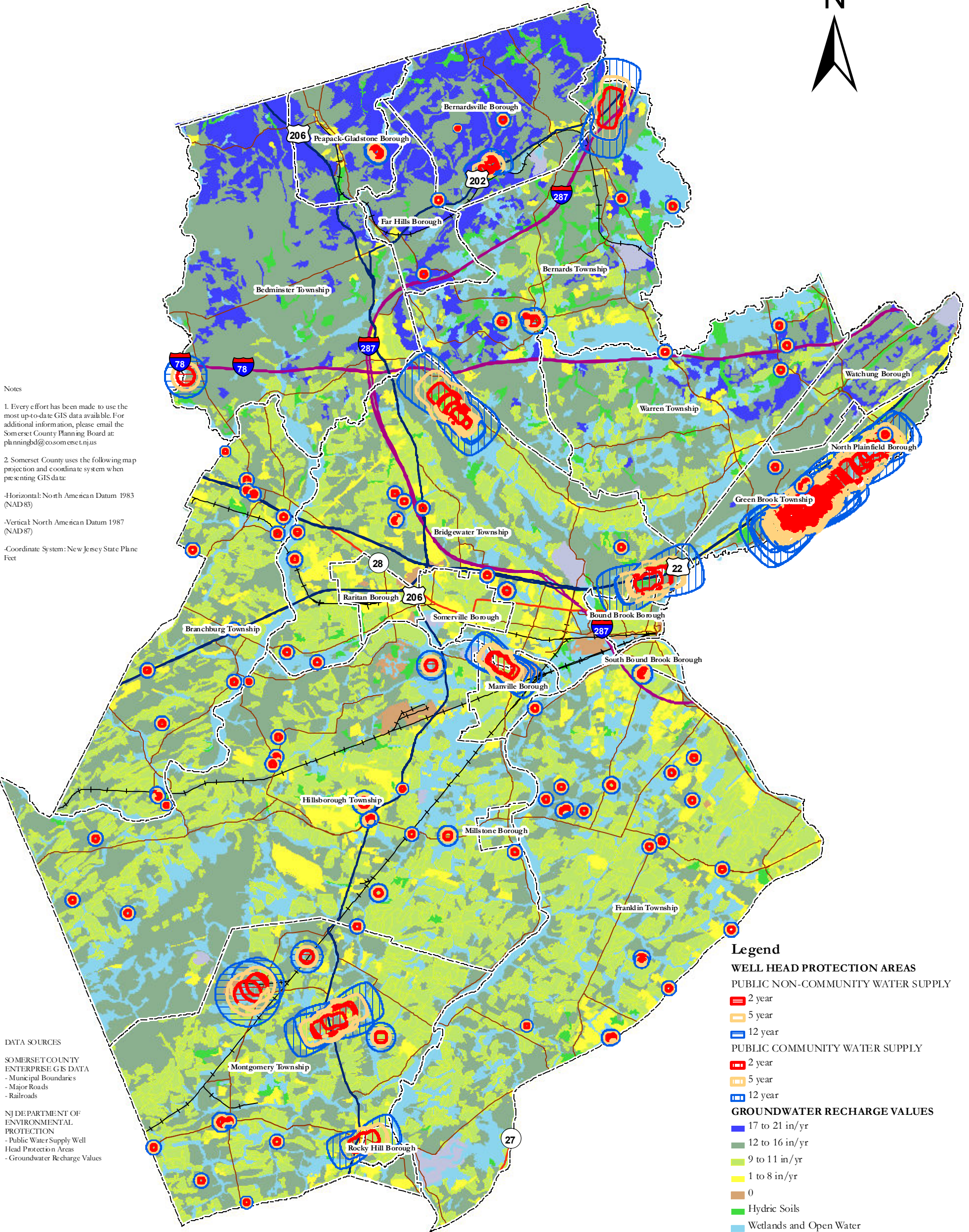


PRIORITY PRESERVATION INVESTMENT AREAS (PPIAs) SUPPLEMENTAL CRITERIA: GROUNDWATER Somerset County, NJ



Notes

1. Every effort has been made to use the most up-to-date GIS data available. For additional information, please email the Somerset County Planning Board at planningbd@cosomerset.nj.us
2. Somerset County uses the following map projection and coordinate system when presenting GIS data:
 - Horizontal: North American Datum 1983 (NAD 83)
 - Vertical: North American Datum 1987 (NAD 87)
 - Coordinate System: New Jersey State Plane Feet

DATA SOURCES

- SOMERSET COUNTY ENTERPRISE GIS DATA
- Municipal Boundaries
 - Major Roads
 - Railroads
- NJ DEPARTMENT OF ENVIRONMENTAL PROTECTION
- Public Water Supply Well Head Protection Areas
 - Groundwater Recharge Values

Legend

- WELL HEAD PROTECTION AREAS**
- PUBLIC NON-COMMUNITY WATER SUPPLY**
- 2 year
 - 5 year
 - 12 year
- PUBLIC COMMUNITY WATER SUPPLY**
- 2 year
 - 5 year
 - 12 year
- GROUNDWATER RECHARGE VALUES**
- 17 to 21 in/yr
 - 12 to 16 in/yr
 - 9 to 11 in/yr
 - 1 to 8 in/yr
 - 0
 - Hydric Soils
 - Wetlands and Open Water
 - No Recharge Calculated
- MAJOR ROADS**
- Interstate Highways
 - US Highways
 - State Highways
 - County Roads
 - Railroads
 - MUNICIPAL BOUNDARY AREAS

