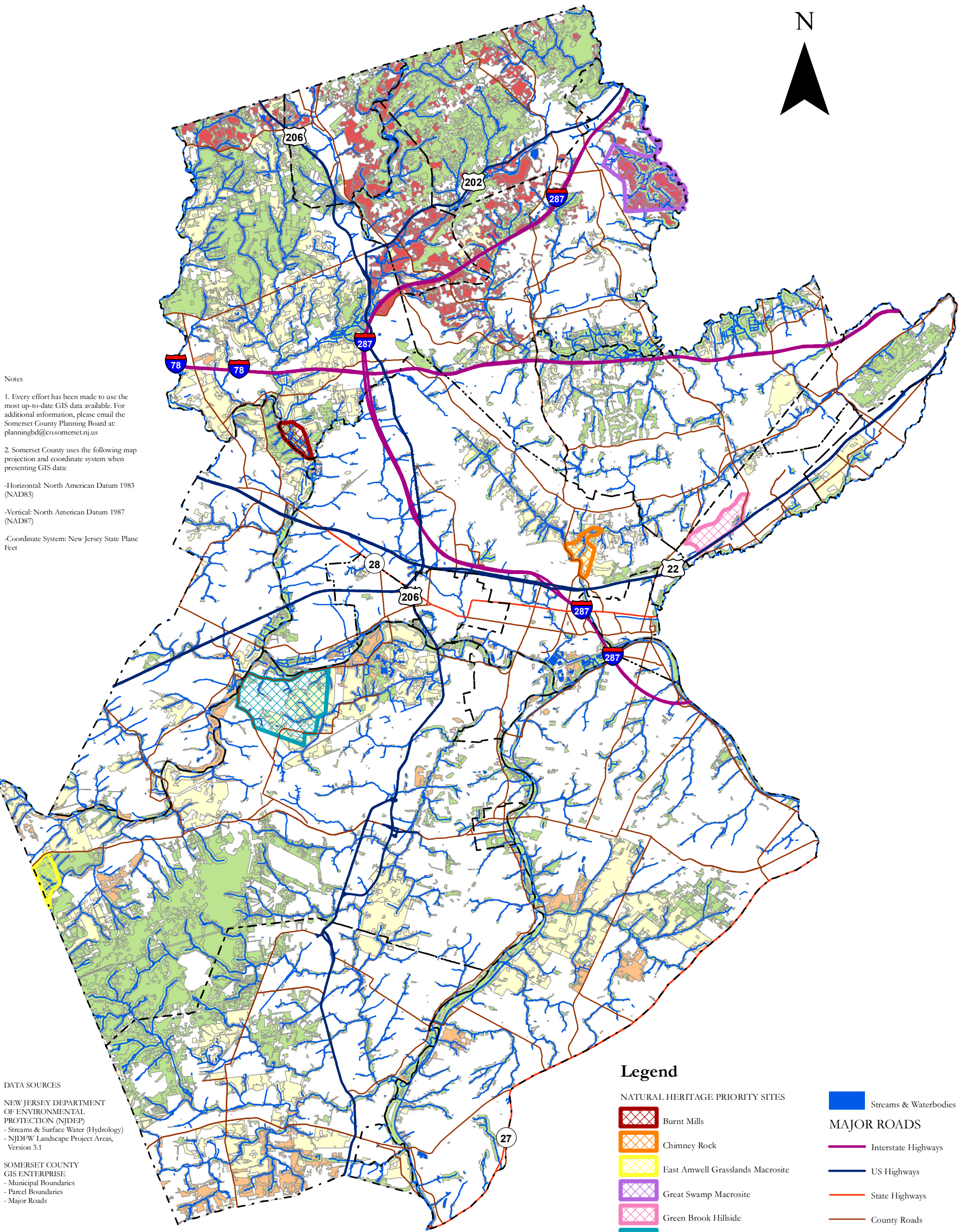


PRIORITY PRESERVATION INVESTMENT AREAS (PPIAs) SUPPLEMENTAL CRITERIA: NATURAL HABITAT Somerset County, NJ



Notes

1. Every effort has been made to use the most up-to-date GIS data available. For additional information, please email the Somerset County Planning Board at: planningbd@cosomersetnj.us
2. Somerset County uses the following map projection and coordinate system when presenting GIS data:
 - Horizontal: North American Datum 1983 (NAD83)
 - Vertical: North American Datum 1987 (NAD87)
 - Coordinate System: New Jersey State Plane Feet

DATA SOURCES

- NEW JERSEY DEPARTMENT OF ENVIRONMENTAL PROTECTION (NJDEP)
- Streams & Surface Water (Hydrology)
 - NJDFW Landscape Project Areas, Version 3.1
- SOMERSET COUNTY GIS ENTERPRISE
- Municipal Boundaries
 - Parcel Boundaries
 - Major Roads

Legend

- NATURAL HERITAGE PRIORITY SITES**
- Burnt Mills
 - Chimney Rock
 - East Amwell Grasslands Macrosite
 - Great Swamp Macrosite
 - Green Brook Hillside
 - Orchard Drive Grasslands
- NJDFW LANDSCAPE PROJECT AREAS**
- Suitable habitat (Rank 1)
 - Priority Species (Rank 2)
 - State Threatened (Rank 3)
 - State Endangered (Rank 4)
 - Federal Threatened & Endangered (Rank 5)
- MAJOR ROADS**
- Streams & Waterbodies
 - Interstate Highways
 - US Highways
 - State Highways
 - County Roads
 - Municipal Boundaries

