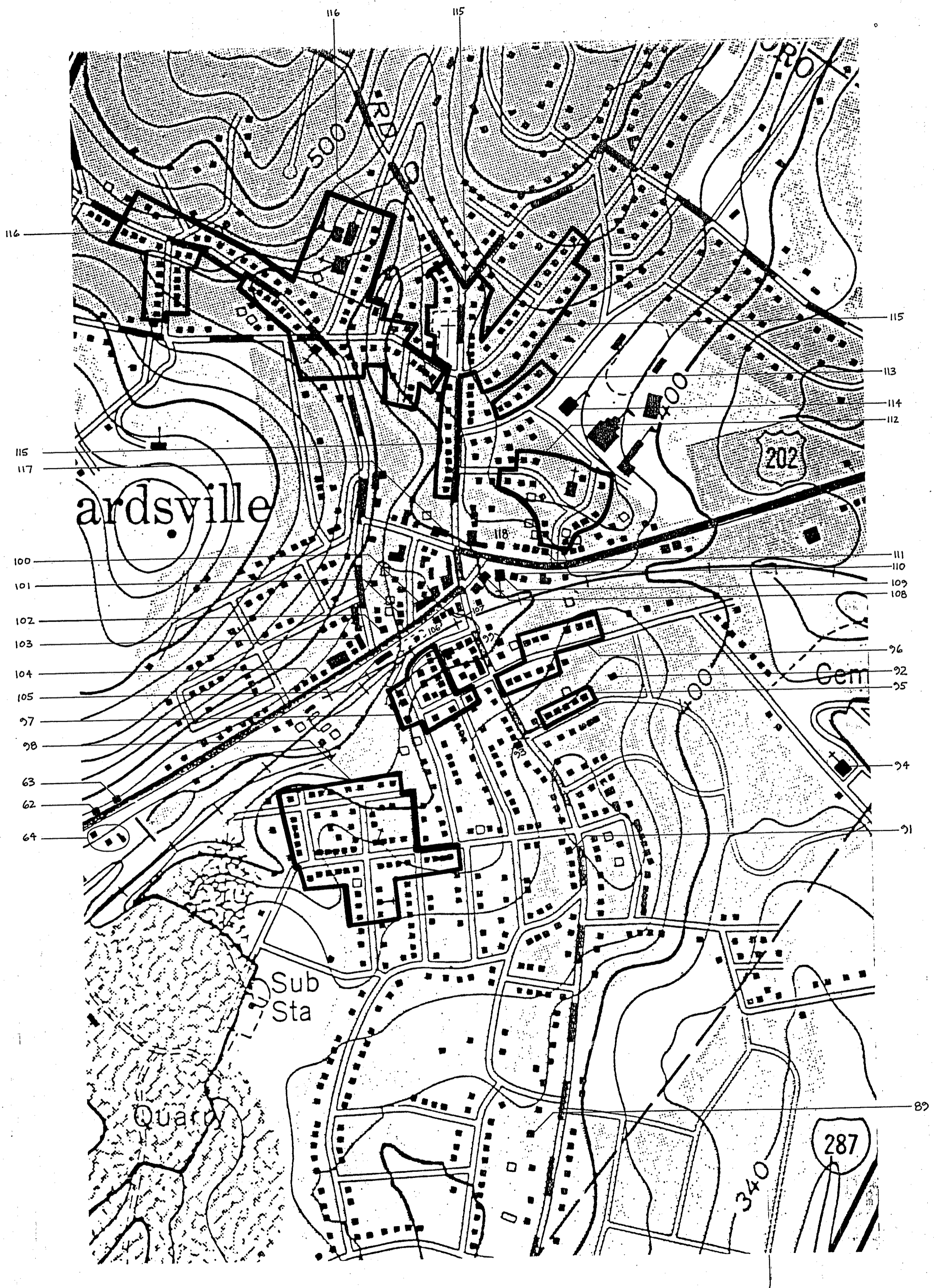
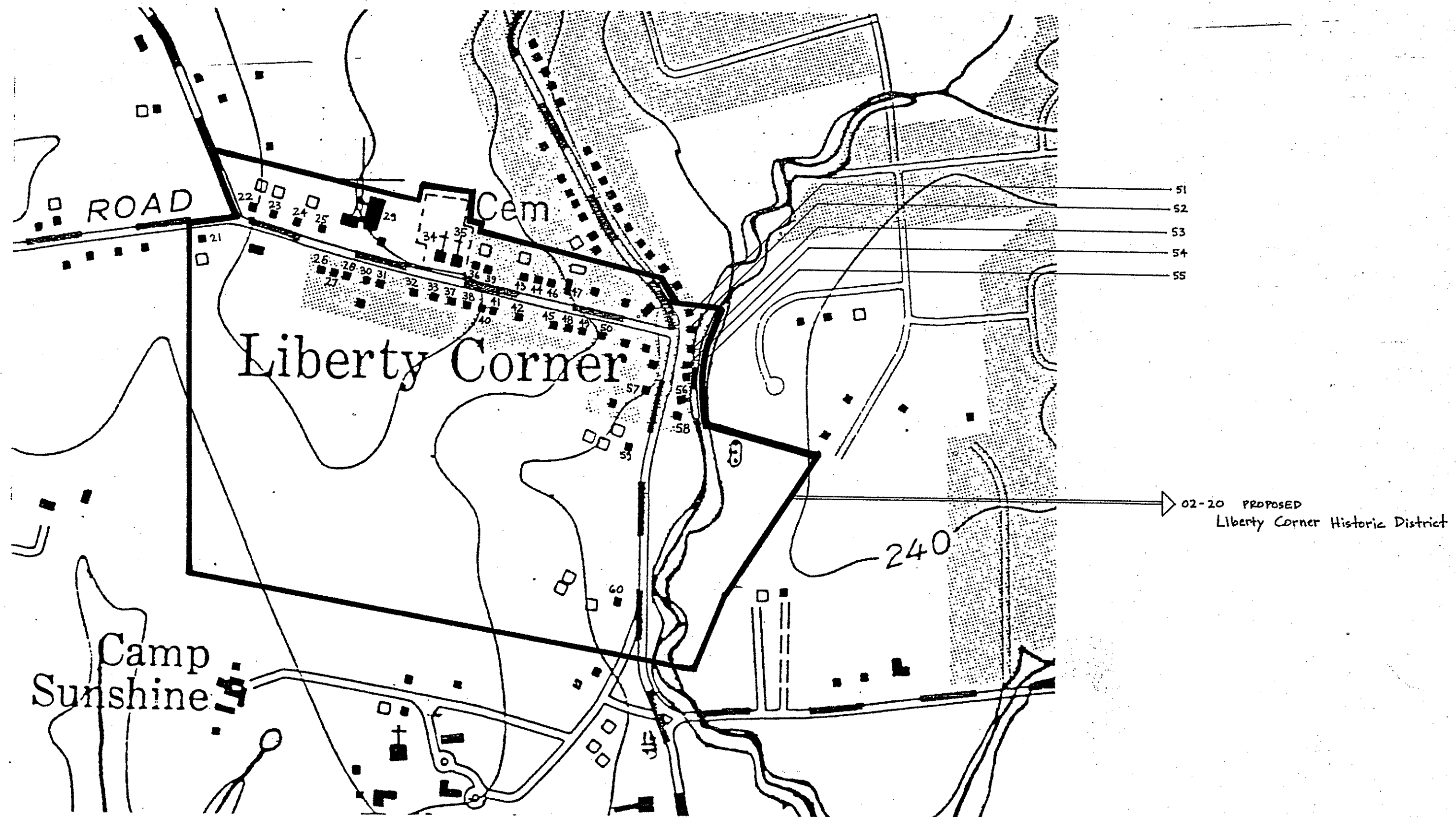


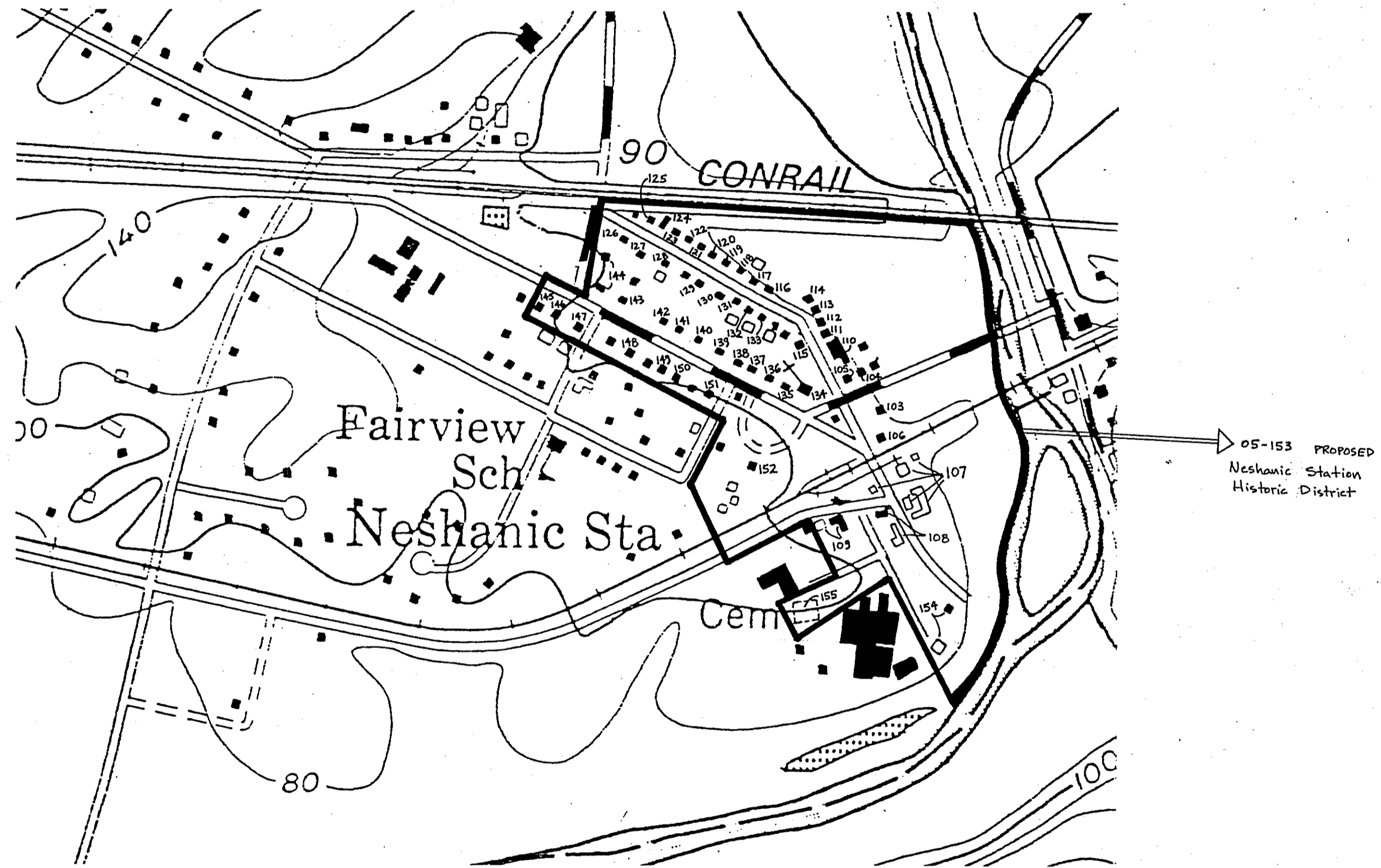
Somerset County Cultural Resource Survey, Phase II
 New Jersey Historic Sites Inventory:
 Village of Basking Ridge, Bernards Township (#18-02-)
 Detail map from USGS Bernardsville Quad
 Prepared by RAM, Inc. for the Somerset County Cultural
 and Heritage Commission, August 1989



Somerset County Cultural Resource Survey, Phase II
 New Jersey Historic Sites Inventory:
 Village of Bernardsville, Bernardsville Borough (#1B-03-)
 Detail map from USGS Bernardsville Quad
 Prepared by RAM, Inc. for the Somerset County
 Cultural and Heritage Commission, August 1989



Somerset County Cultural Resource Survey, Phase II
 New Jersey Historic Sites Inventory:
 Village of Liberty Corner,
 Bernards Township (#18-02-)
 Detail from USGS Bernardsville Quad
 Prepared by RAM, Inc. for the Somerset County
 Cultural and Heritage Commission, August 1989



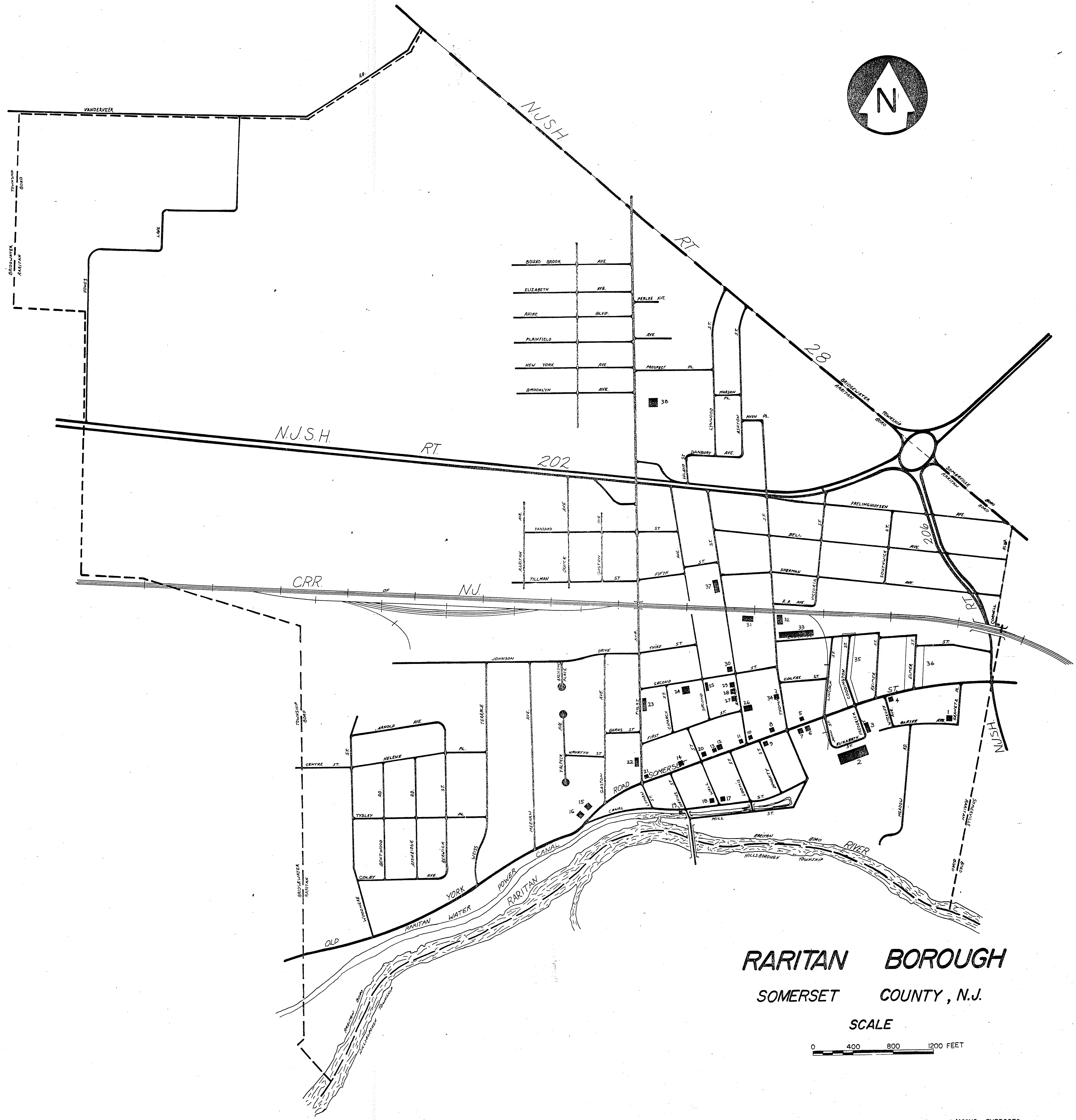
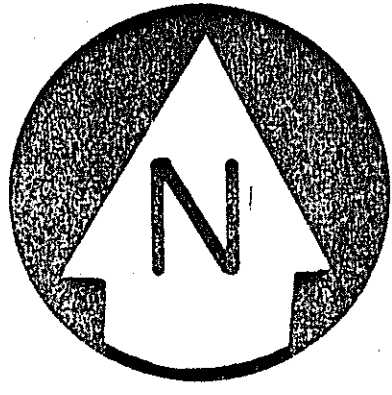
Somerset County Cultural Resource Survey, Phase II
 New Jersey Historic Sites Inventory:
 Village of Neshanic Station,
 Branchburg Township (#18-05-)

Detail map from USGS Raritan Quad

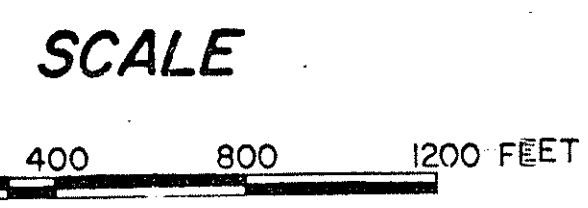
Prepared by RAM, Inc. for the Somerset County Cultural
 and Heritage Commission, August 1989



Somerset County Cultural Resource Survey, Phase II
 New Jersey Historic Sites Inventory:
 Village of Peapack-Gladstone (#18-15-)
 Detail map from USGS GLADSTONE Quad
 Prepared by RAM, Inc. for the Somerset County
 Cultural and Heritage Commission, August 1989



RARITAN BOROUGH
SOMERSET COUNTY, N.J.



FOR PLANNING PURPOSES
PREPARED BY SOMERSET COUNTY PLANNING BOARD 6/73
REVISED/77

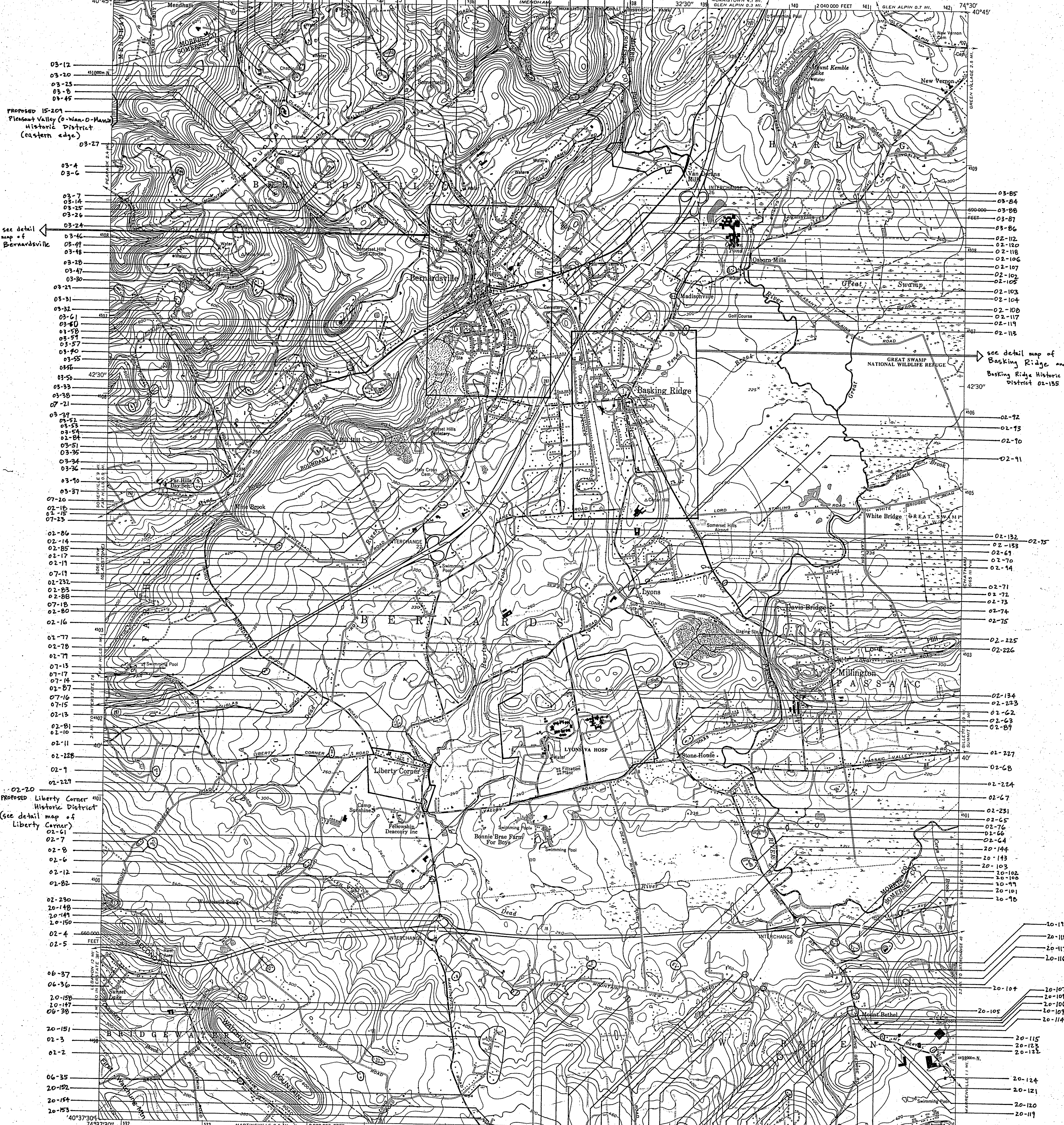
Somerset County Cultural Resource Survey, Phase II
New Jersey Historic Sites Inventory:
Raritan Borough (#18-16-)
M. Inc. for the Somerset County
Change Commission, August 1985

Prepared by RAI
Cultural and Her.

UNITED STATES
DEPARTMENT OF THE INTERIOR
GEOLOGICAL SURVEY

UNITED STATES
DEPARTMENT OF THE ARMY
CORPS OF ENGINEERS

BERNARDSVILLE QUADRANGLE
NEW JERSEY
7.5 MINUTE SERIES (TOPOGRAPHIC)



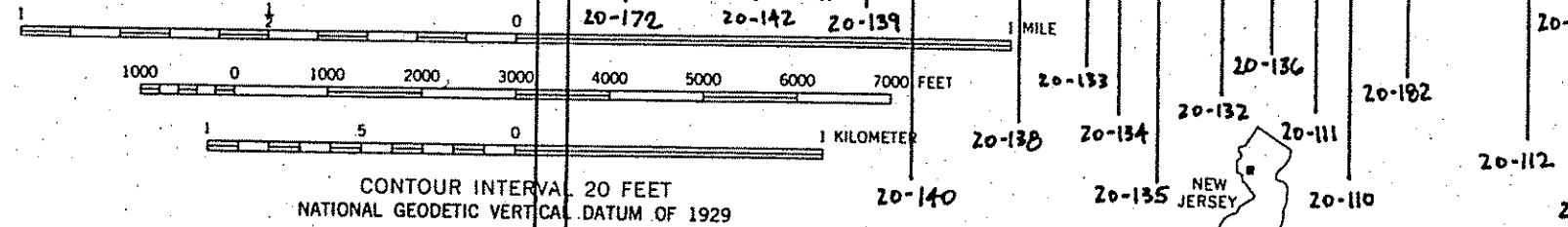
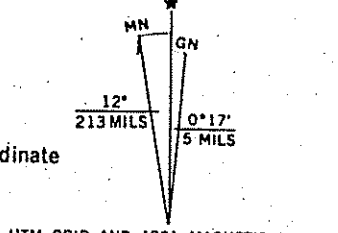
Proposed 15-201
Pleasant Valley (O-Wan-O-Maw)
Historic District
(eastern edge)

see detail
map of
Bernardsville

see detail map of
Basking Ridge and
Basking Ridge Historic
District 02-155

Proposed Liberty Corner
Historic District
(see detail map of
Liberty Corner)

Mapped by the Defense Mapping Agency
Edited and published by the Geological Survey
Control by NOS/NOAA and New Jersey Geodetic Survey
Topography by photogrammetric methods from aerial photographs
taken 1942. Field checked 1943
Culture revised by the Geological Survey 1954
Polyconic projection. 10,000-foot grid ticks based on New Jersey coordinate
system. 1000-meter Universal Transverse Mercator grid ticks,
zone 18, shown in blue. 1927 North American Datum
To place on the predicted North American Datum 1983
move the projection lines 6 meters south and 33 meters west
as shown by dashed corner ticks
There may be private inholdings within the boundaries of
the National or State reservations shown on this map



ROAD CLASSIFICATION
Heavy-duty _____
Light-duty _____
Medium-duty _____
Unimproved dirt _____
U.S. Route _____
Interstate Route _____

THIS MAP COMPLIES WITH NATIONAL MAP ACCURACY STANDARDS
FOR SALE BY U.S. GEOLOGICAL SURVEY, RESTON, VIRGINIA 22092
A FOLDER DESCRIBING TOPOGRAPHIC MAPS AND SYMBOLS IS AVAILABLE ON REQUEST

QUADRANGLE LOCATION
BERNARDSVILLE, N. J.
N4037.5-W7430.75

Somerset County
Cultural Resource Survey,
Phase II
New Jersey Historic Sites
Inventory (#18-)
Prepared by RAM, Inc. for
the Somerset County Cultural
and Heritage Commission
August 1985

1954
PHOTOREVISED 1981
DMA 6085 II NE-SERIES V822

UNITED STATES
DEPARTMENT OF THE INTERIOR
GEOLOGICAL SURVEY

UNITED STATES
DEPARTMENT OF THE ARMY
CORPS OF ENGINEERS
685 H NE
(BERNARDSVILLE)

BOUND BROOK QUADRANGLE
NEW JERSEY
7.5 MINUTE SERIES (TOPOGRAPHIC)



see detail map of Somerville Borough
18-151 proposed Somerville Historic District see detail map of Somerville Borough

Mapped by the Army Map Service
Edited and published by the Geological Survey
Control by US&GS and New Jersey Geodetic Survey
Topography from aerial photographs by photogrammetric methods. Aerial photographs taken 1943. Field check 1943.
Culture revised by the Geological Survey 1955
Polyconic projection. 1927 North American Datum 10,000-foot grid based on New Jersey coordinate system
1,000-meter Universal Transverse Mercator grid ticks, zone 18, shown in blue
To place on the predicted North American Datum 1983 move the projection lines 6 meters south and 33 meters west as shown by dashed corner ticks

There may be private inholdings within the boundaries of the National or State reservations shown on this map
Red tint indicates areas in which only landmark buildings are shown

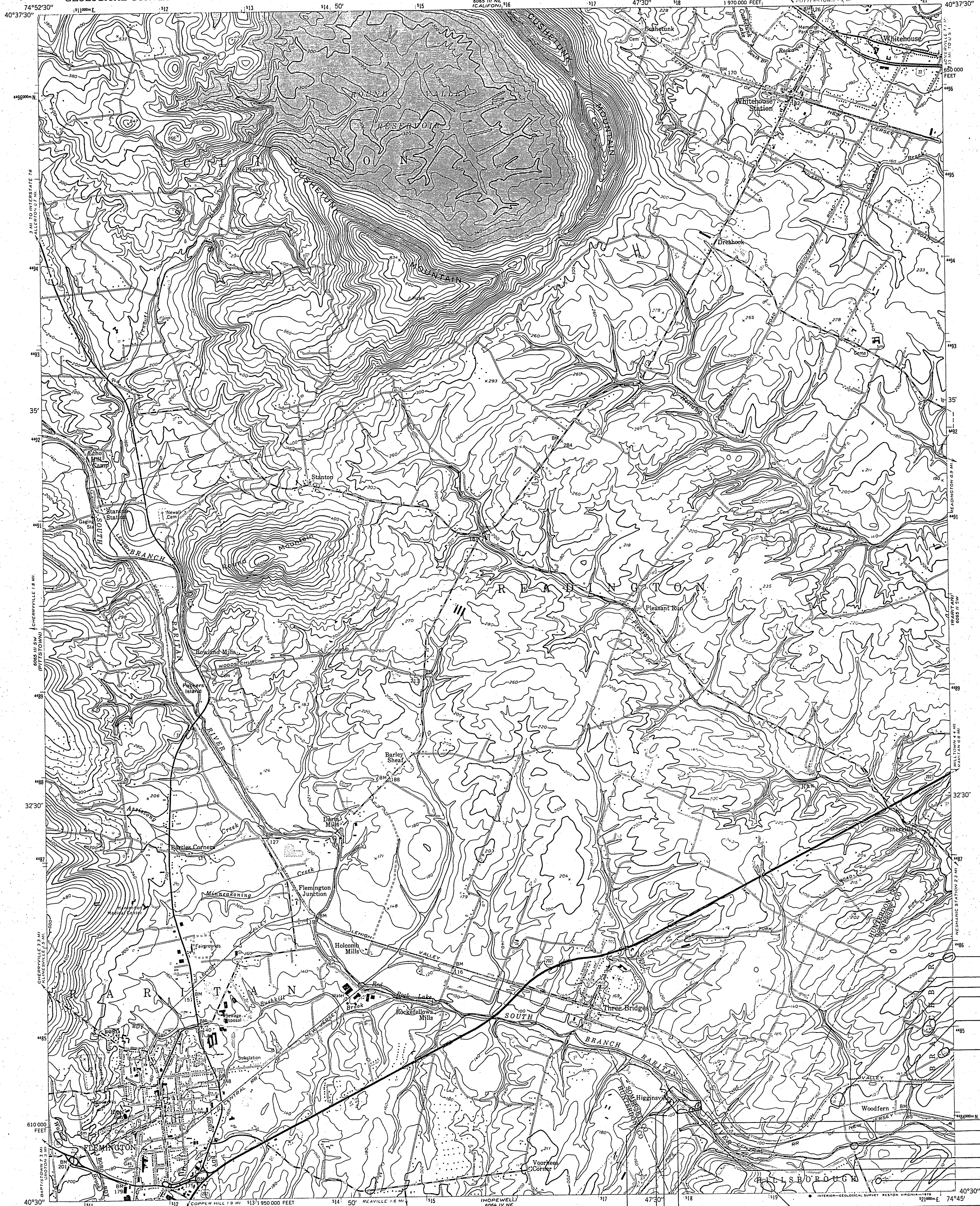
SCALE 1:24000
CONTOUR INTERVAL 20 FEET
NATIONAL GEODETIC VERTICAL DATUM OF 1929
THIS MAP COMPLIES WITH NATIONAL MAP ACCURACY STANDARDS
FOR SALE BY U. S. GEOLOGICAL SURVEY, RESTON, VIRGINIA 22092
A FOLDER DESCRIBING TOPOGRAPHIC MAPS AND SYMBOLS IS AVAILABLE ON REQUEST

Revisions shown in purple compiled by the Geological Survey from aerial photographs taken 1970. This information not field checked.
Purple tint indicates extension of urban areas
Map photorevised 1977
No major culture or drainage changes observed

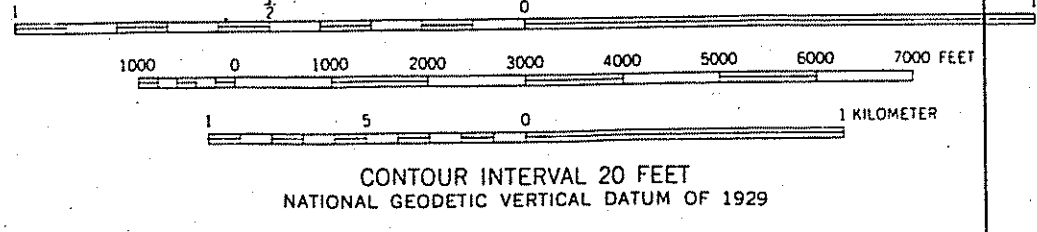
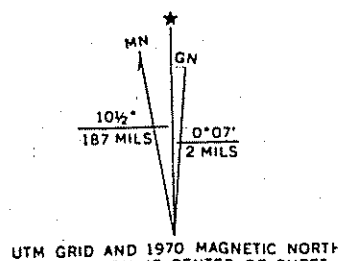
ROAD CLASSIFICATION
Heavy-duty ——— Light-duty - - - -
Medium-duty ——— Unimproved dirt - - - -
U.S. Route State Route
Interstate Route

BOUND BROOK, N. J.
N4030-W7430/7.5
PHOTOINSPECTION 1977
1955
PHOTOREVISED 1970
AMS 6055 II SE - SERIES 1822

Somerset County
Cultural Resource Survey,
PHASE II
New Jersey Historic Sites
Inventory (#118-)
Prepared by RAM, Inc. for the
Somerset County Cultural
and Heritage Commission
August 1987



Mapped by the Army Map Service
Edited and published by the Geological Survey
Control by USCGS, USDA, and New Jersey Geodetic Survey
Topography from aerial photographs by stereophotogrammetric
methods. Aerial photographs taken 1942. Field check 1942
Culture revised by the Geological Survey 1954
Polyconic projection. 1927 North American datum
10,000-foot grid based on New Jersey coordinate system
1000-meter Universal Transverse Mercator grid ticks,
zone 18, shown in blue
Revisions shown in purple compiled by the Geological Survey
from aerial photographs taken 1970. This information
not field checked



ROAD CLASSIFICATION

Heavy-duty	Light-duty
Medium-duty	Unimproved dirt
U. S. Route	State Route

NEW JERSEY
QUADRANGLE LOCATION

FLEMINGTON, N. J.
N4030-W7445/7.5
1954
PHOTOREVISED 1970
AMS 6085 III SE-SERIES V822

Somerset County
Cultural Resource Survey,
Phase II
New Jersey Historic Sites
Inventory (#18-3)
Prepared by RAM, Inc. for the
Somerset County Cultural
and Heritage Commission
August 1989

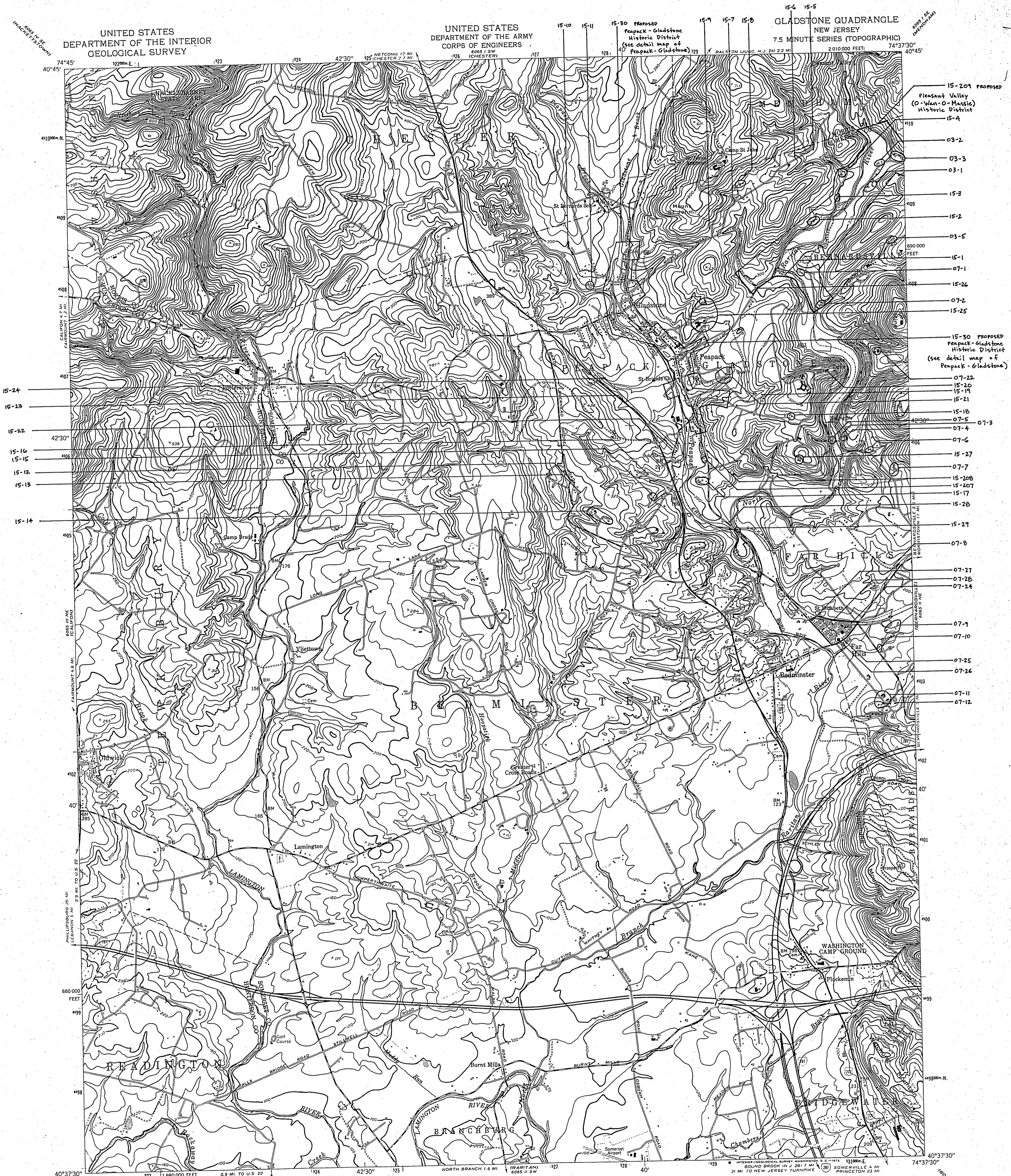
- 05-101
- 05-102
- 05-157
- 05-156
- 05-158
- 05-157
- 10-202
- 10-203
- 10-201
- 10-200
- 10-109
- 10-108

THIS MAP COMPLIES WITH NATIONAL MAP ACCURACY STANDARDS
FOR SALE BY U. S. GEOLOGICAL SURVEY, RESTON, VIRGINIA 22092
A FOLDER DESCRIBING TOPOGRAPHIC MAPS AND SYMBOLS IS AVAILABLE ON REQUEST

UNITED STATES
DEPARTMENT OF THE INTERIOR
GEOLOGICAL SURVEY

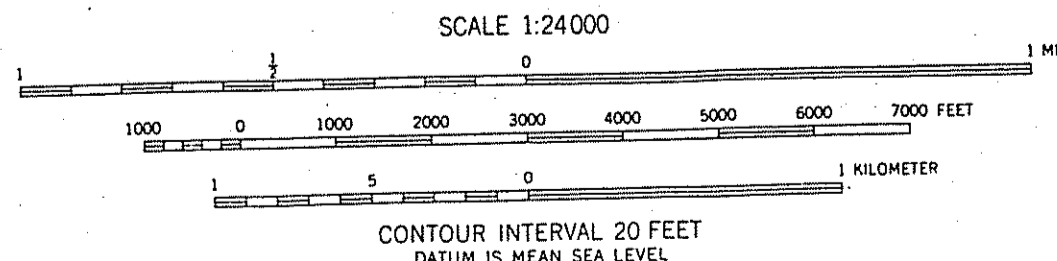
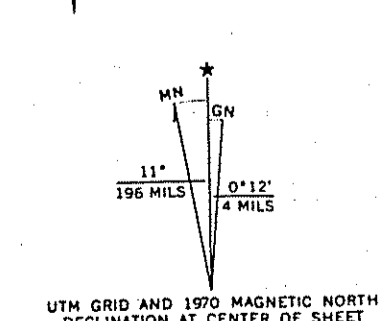
UNITED STATES
DEPARTMENT OF THE ARMY
CORPS OF ENGINEERS

GLADSTONE QUADRANGLE
NEW JERSEY
7.5 MINUTE SERIES (TOPOGRAPHIC)



- 15-209 PROPOSED Pleasant Valley (O-Wan-O-Massie) Historic District 15-4
- 03-2
- 03-3
- 03-1
- 15-3
- 15-2
- 03-5
- 15-1
- 07-1
- 15-26
- 07-2
- 15-25
- 15-30 PROPOSED Peapack-Gladstone Historic District (see detail map of Peapack-Gladstone)
- 07-22
- 15-20
- 15-19
- 15-21
- 15-18
- 07-5
- 07-4
- 07-3
- 15-27
- 07-7
- 15-208
- 15-207
- 15-17
- 15-28
- 15-27
- 07-8
- 07-27
- 07-28
- 07-24
- 07-9
- 07-10
- 07-25
- 07-26
- 07-11
- 07-12

Mapped by the Army Map Service
Edited and published by the Geological Survey
Control by USC&GS and New Jersey Geodetic Survey
Topography from aerial photographs by photogrammetric methods. Aerial photographs taken 1942. Field check 1942
Culture revised by the Geological Survey 1954
Polyconic projection. 1927 North American datum
10,000-foot grid based on New Jersey coordinate system
1000-meter Universal Transverse Mercator grid ticks, zone 18, shown in blue
Revisions shown in purple compiled by the Geological Survey from aerial photographs taken 1970. This information not field checked
Purple tint indicates extension of urban areas



ROAD CLASSIFICATION
Heavy-duty ——— Light-duty ———
Medium-duty ——— Unimproved dirt ———
U.S. Route ——— State Route ———
Interstate Route ———

GLADSTONE, N. J.
N4037.5-W7437.5/7.5
1954
PHOTOREVISED 1970
AMS 6065 II NW-SERIES V822

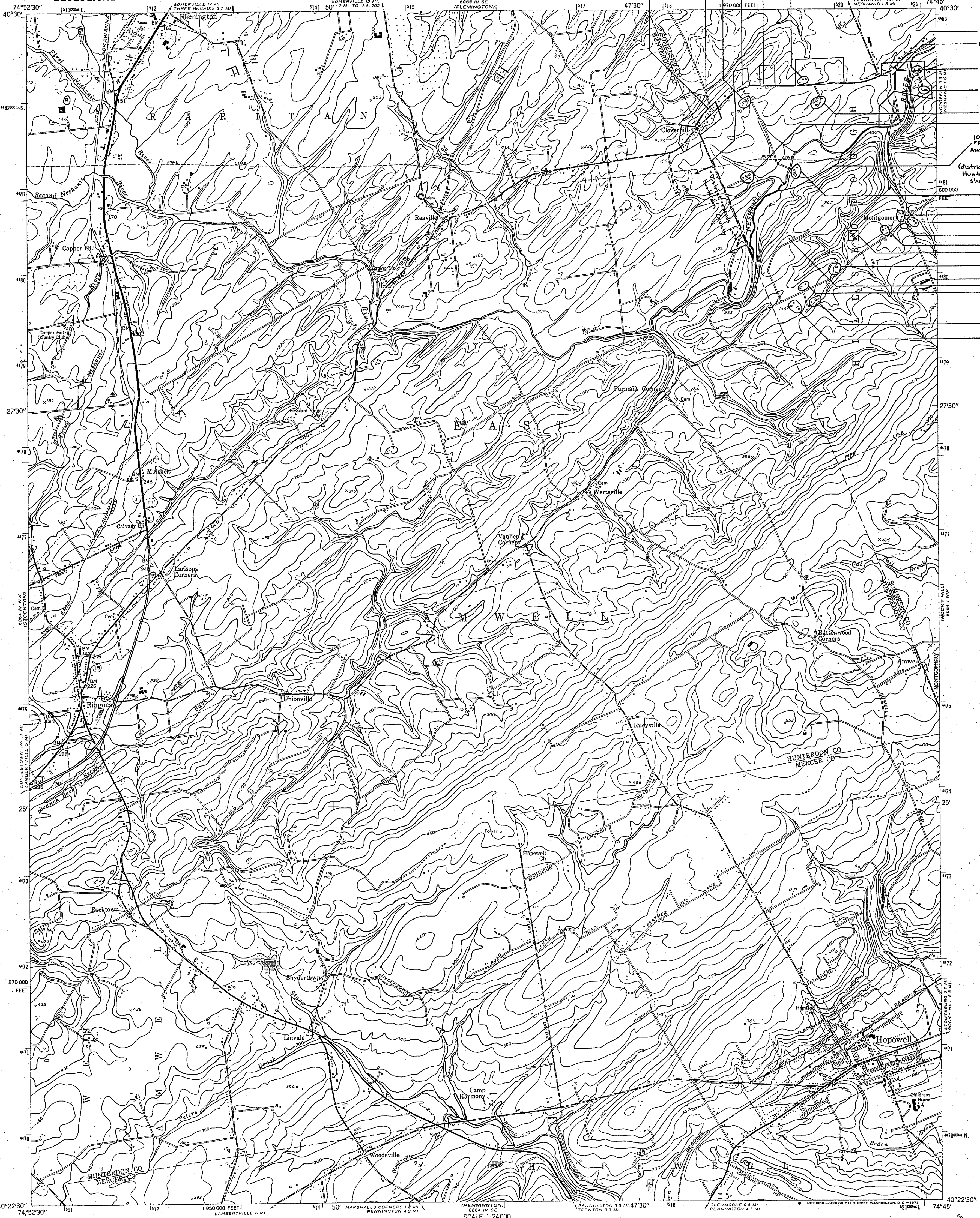
Somerset County Cultural Resource Survey, Phase II
New Jersey Historic Sites Inventory (418-)
Prepared by RAM, Inc. for the Somerset County Cultural and Heritage Commission
August 1989

THIS MAP COMPLIES WITH NATIONAL MAP ACCURACY STANDARDS
FOR SALE BY U.S. GEOLOGICAL SURVEY, WASHINGTON, D. C. 20242
A FOLDER DESCRIBING TOPOGRAPHIC MAPS AND SYMBOLS IS AVAILABLE ON REQUEST

UNITED STATES
DEPARTMENT OF THE INTERIOR
GEOLOGICAL SURVEY

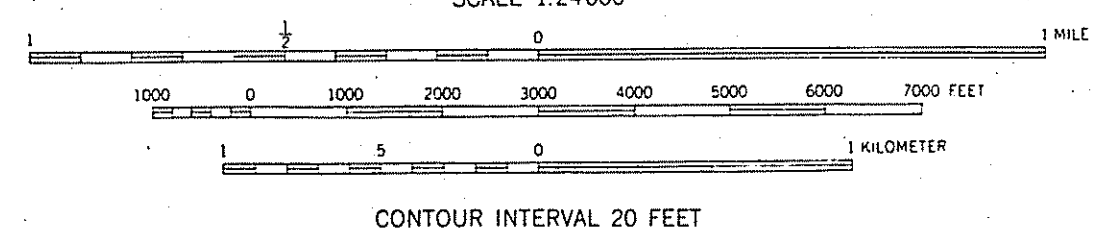
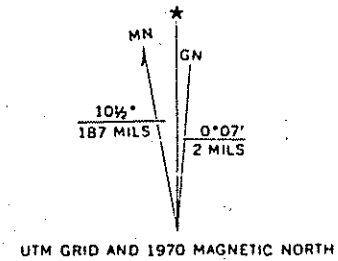
UNITED STATES
DEPARTMENT OF THE ARMY
CORPS OF ENGINEERS

HOPEWELL QUADRANGLE
NEW JERSEY
7.5 MINUTE SERIES (TOPOGRAPHIC)



- 10-20
- 10-73
- 10-19
- 10-18
- 10-21
- 10-84
- 10-219
Proposed
Amwell - Clover Hill
Historic District
(District extends into
Hunterdon County, as
shown)
- 600 000
FEET
- 10-24
- 10-133
- 10-72
- 10-71
- 10-134
- 10-135
- 10-136
- 10-137
- 10-214
- 10-208
- 10-138
- 10-140
- 10-139

Mapped by the Army Map Service
Edited and published by the Geological Survey
Control by USCGS and New Jersey Geodetic Survey
Topography from aerial photographs by stereophotogrammetric
methods. Aerial photographs taken 1942
Culture revised by the Geological Survey 1954
Polyconic projection. 1927 North American datum
10,000-foot grid based on New Jersey coordinate system
1000-meter Universal Transverse Mercator grid ticks,
zone 18, shown in blue
Revisions shown in purple compiled by the Geological Survey
from aerial photographs taken 1970. This information
not field checked



ROAD CLASSIFICATION
Heavy-duty ——— Light-duty - - - - -
Medium-duty ——— Unimproved dirt - - - - -
U.S. Route ○ Slate Route

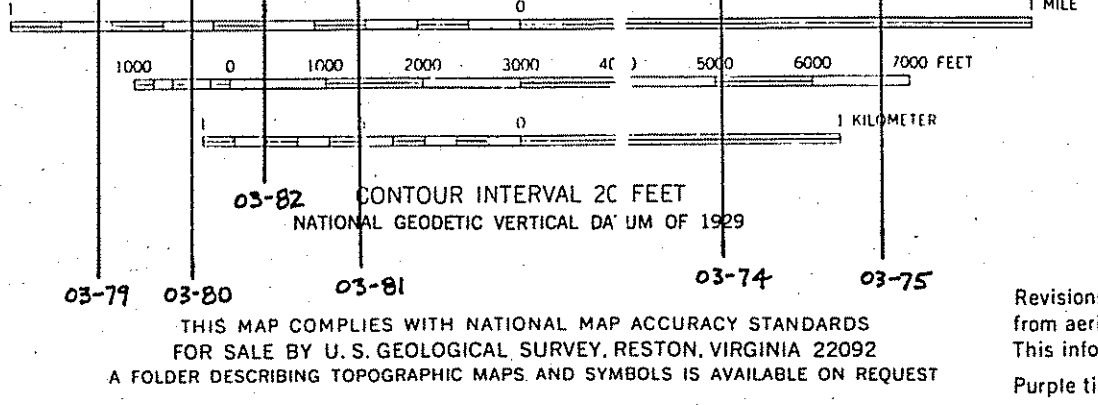
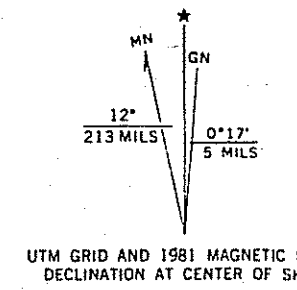
THIS MAP COMPLIES WITH NATIONAL MAP ACCURACY STANDARDS
FOR SALE BY U.S. GEOLOGICAL SURVEY, WASHINGTON, D. C. 20242
A FOLDER DESCRIBING TOPOGRAPHIC MAPS AND SYMBOLS IS AVAILABLE ON REQUEST

HOPEWELL, N. J.
N4022.5-W7445/7.5
1954
PHOTOREVISED 1970
AMS 6064 IV NE-SERIES V822

Somerset County
Cultural Resource Survey,
Phase II
New Jersey Historic Sites
Inventory (GIS-)
Prepared by RHM, Inc. for
the Somerset County Cultural
and Heritage Commission
August 1983

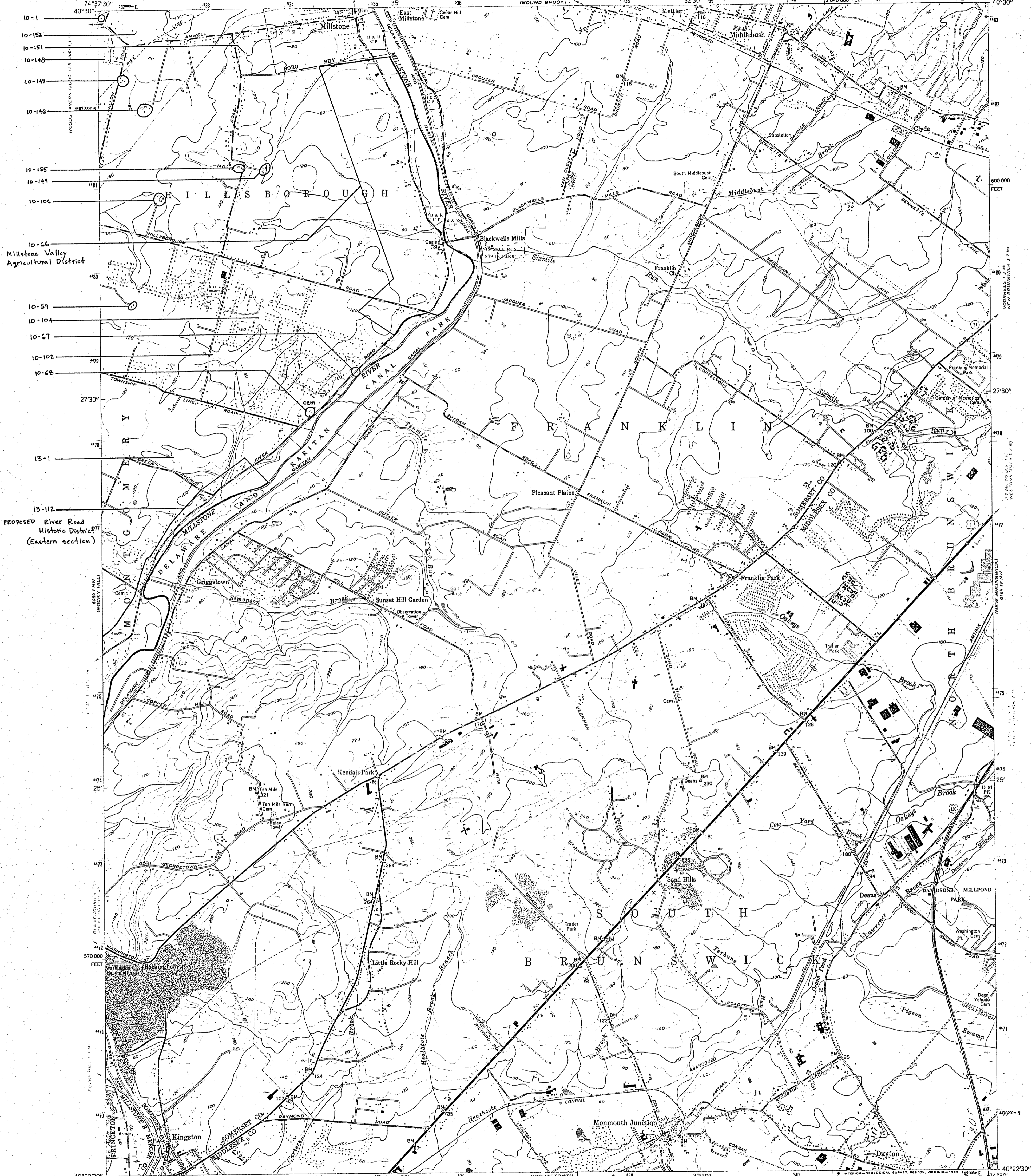


Mapped by the Defense Mapping Agency
Edited and published by the Geological Survey
Control by USGS, NOS/NOAA, and New Jersey Geodetic Survey
Topography by photogrammetric methods from aerial photographs
taken 1942-1943. Culture revised by the Geological Survey 1954
Polyconic projection. 10,000-foot grid ticks based on New Jersey
coordinate system. 1000-meter Universal Transverse Mercator
grid ticks, zone 18, shown in blue. 1927 North American
Datum. To place on the predicted North American Datum
1983 move the projection lines 6 meters south and
33 meters west as shown by dashed corner ticks
Red tint indicates area in which only
landmark buildings are shown
There may be private inholdings within the boundaries of
the National or State reservations shown on this map



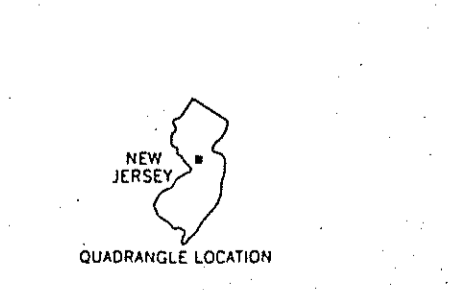
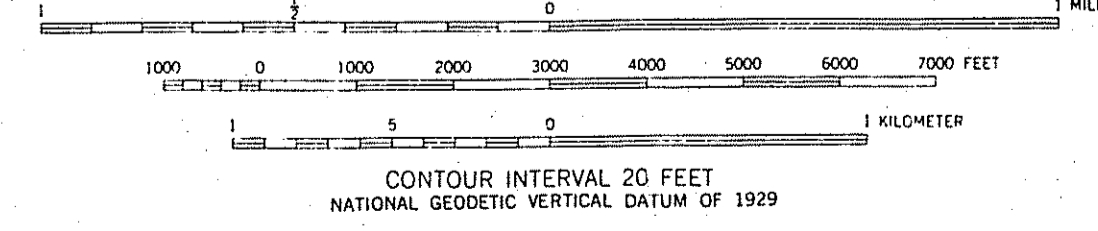
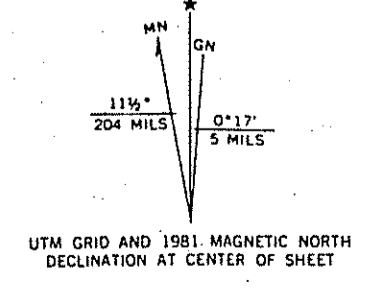
ROAD CLASSIFICATION
Heavy-duty ——— Light-duty - - - - -
Medium-duty ——— Unimproved dirt - - - - -
U.S. Route ——— Interstate Route ———
State Route ———
MENDHAM, N. J.
N4045-W7430/7.5
1954
PHOTOREVISED 1981
DMA 6065 I SE-SERIES V822

Somerset County
Cultural Resource Survey,
Phase II
New Jersey Historic Sites
Inventory (#18-)
Prepared by RAM, Inc. for
the Somerset County Cultural
and Heritage Commission
August 1983



10-1
10-152
10-151
10-148
10-147
10-146
10-155
10-141
10-106
10-66
Millstone Valley
Agricultural District
10-59
10-104
10-67
10-102
10-68
27°30'
13-1
13-112
Proposed River Road
Historic District
(Eastern section)

Mapped by the Defense Mapping Agency
Edited and published by the Geological Survey
Control by USGS, NOS/NOAA, and New Jersey Geodetic Survey
Topography by photogrammetric methods from aerial
photographs taken 1943
Culture revised by the Geological Survey 1954
Polyconic projection. 10,000-foot grid ticks based on New Jersey
coordinate system. 1000-meter Universal Transverse Mercator
grid ticks, zone 18, shown in blue. 1927 North American Datum
To place on the predicted North American Datum 1983
move the projection lines 6 meters south and 33 meters west
as shown by dashed corner ticks
There may be private inholdings within the boundaries
of the National or State reservations shown on this map



ROAD CLASSIFICATION
Heavy-duty ——— Light-duty - - - - -
Medium-duty - - - - - Unimproved dirt - - - - -
U.S. Route ○ State Route ○
MONMOUTH JUNCTION, N. J.
N4022.5-W7430/7.5
1954
PHOTOREVISED 1981
DMA 6084 1 NE-SERIES V822

FOR SALE BY U. S. GEOLOGICAL SURVEY, RESTON, VIRGINIA 22092
A FOLDER DESCRIBING TOPOGRAPHIC MAPS AND SYMBOLS IS AVAILABLE ON REQUEST

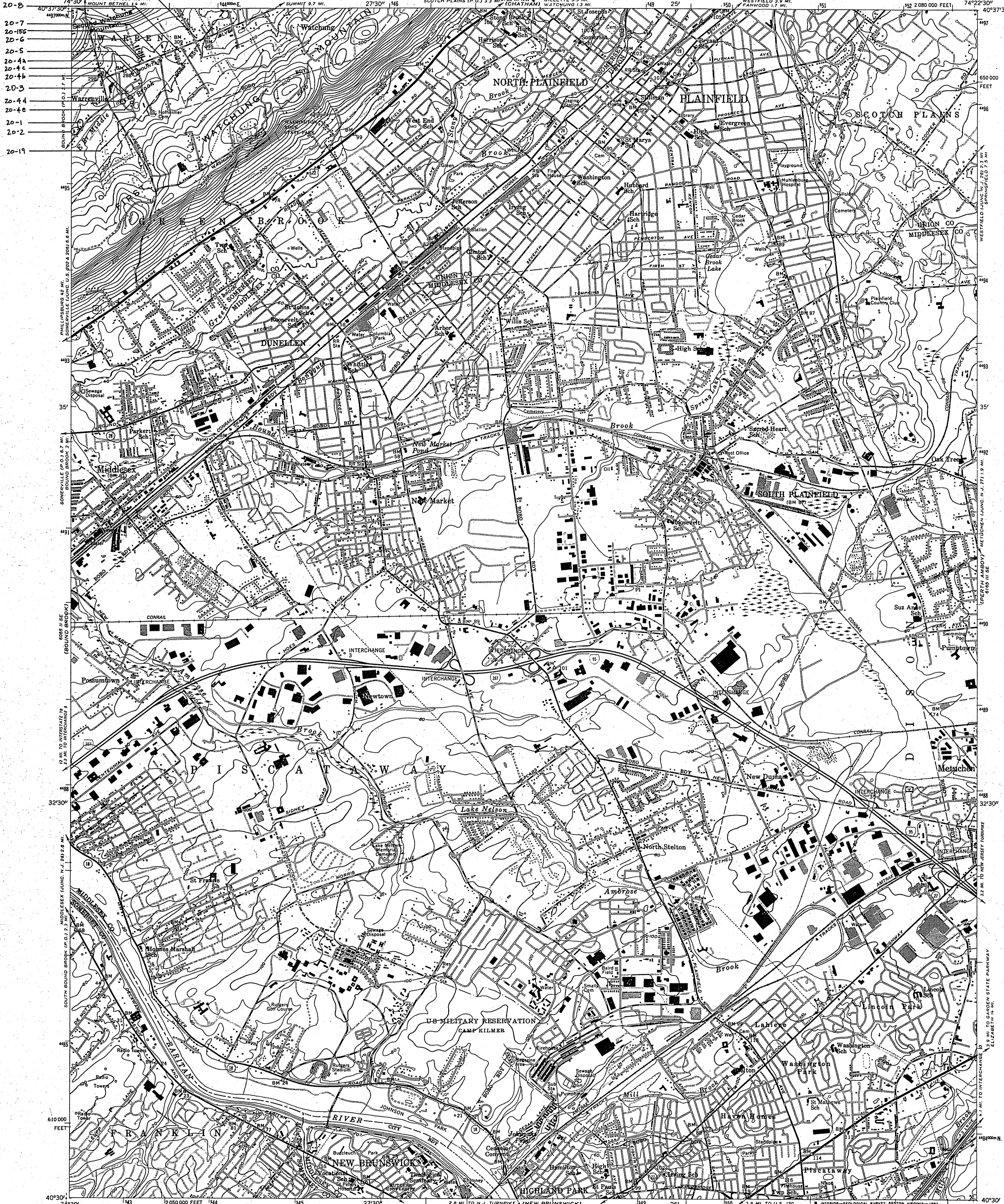
Revisions shown in purple compiled by the Geological Survey
from aerial photographs taken 1976 and other sources
This information not field checked. Map edited 1981
Purple tint indicates extension of urban areas

Somerset County
Cultural Resource Survey,
Phase II
New Jersey Historic Sites
Inventory (A18-)
Prepared by RAM, Inc. for
the Somerset County Cultural
and Heritage Commission
August 1989

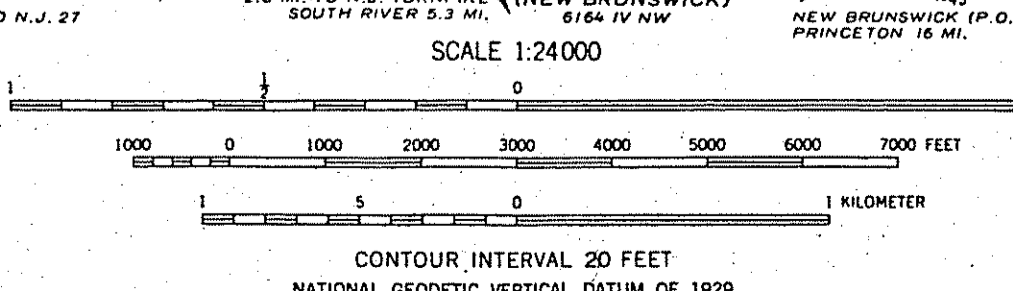
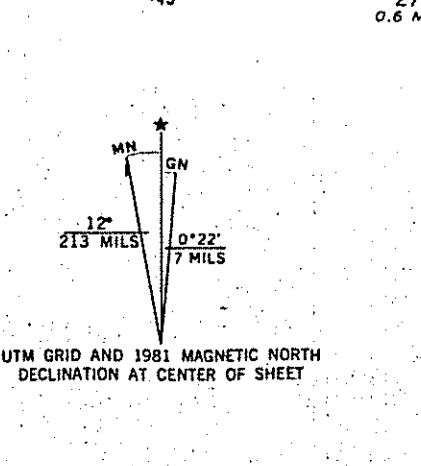
UNITED STATES
DEPARTMENT OF THE INTERIOR
GEOLOGICAL SURVEY

UNITED STATES
DEPARTMENT OF THE ARMY
CORPS OF ENGINEERS

PLAINFIELD QUADRANGLE
NEW JERSEY
7.5 MINUTE SERIES (TOPOGRAPHIC)



Mapped by the Defense Mapping Agency
Edited and published by the Geological Survey
Control by NOS/NOAA and New Jersey Geodetic Survey
Topography by photogrammetric methods from aerial photographs
taken 1942 and 1943. Field checked 1943. Culture revised by the
Geological Survey 1955
Polyconic projection. 10,000-foot grid ticks based on New Jersey
coordinate system. 1000-meter Universal Transverse Mercator
grid ticks, zone 18, shown in blue. 1927 North American Datum
To place on the predicted North American Datum 1983
move the projection lines 6 meters south and 34
meters west as shown by dashed corner ticks
Red tint indicates areas in which only landmark buildings are shown
There may be private inholdings within the boundaries
of the National or State reservations shown on this map



ROAD CLASSIFICATION
Primary highway, all weather, hard surface
Secondary highway, all weather, hard surface
Light-duty road, all weather, improved surface
Unimproved road, fair or dry weather
Interstate Route U.S. Route State Route
Revisions shown in purple compiled by the Geological Survey
from aerial photographs taken 1976 and other sources
This information not field checked. Map edited 1981
Purple tint indicates extension of urban areas

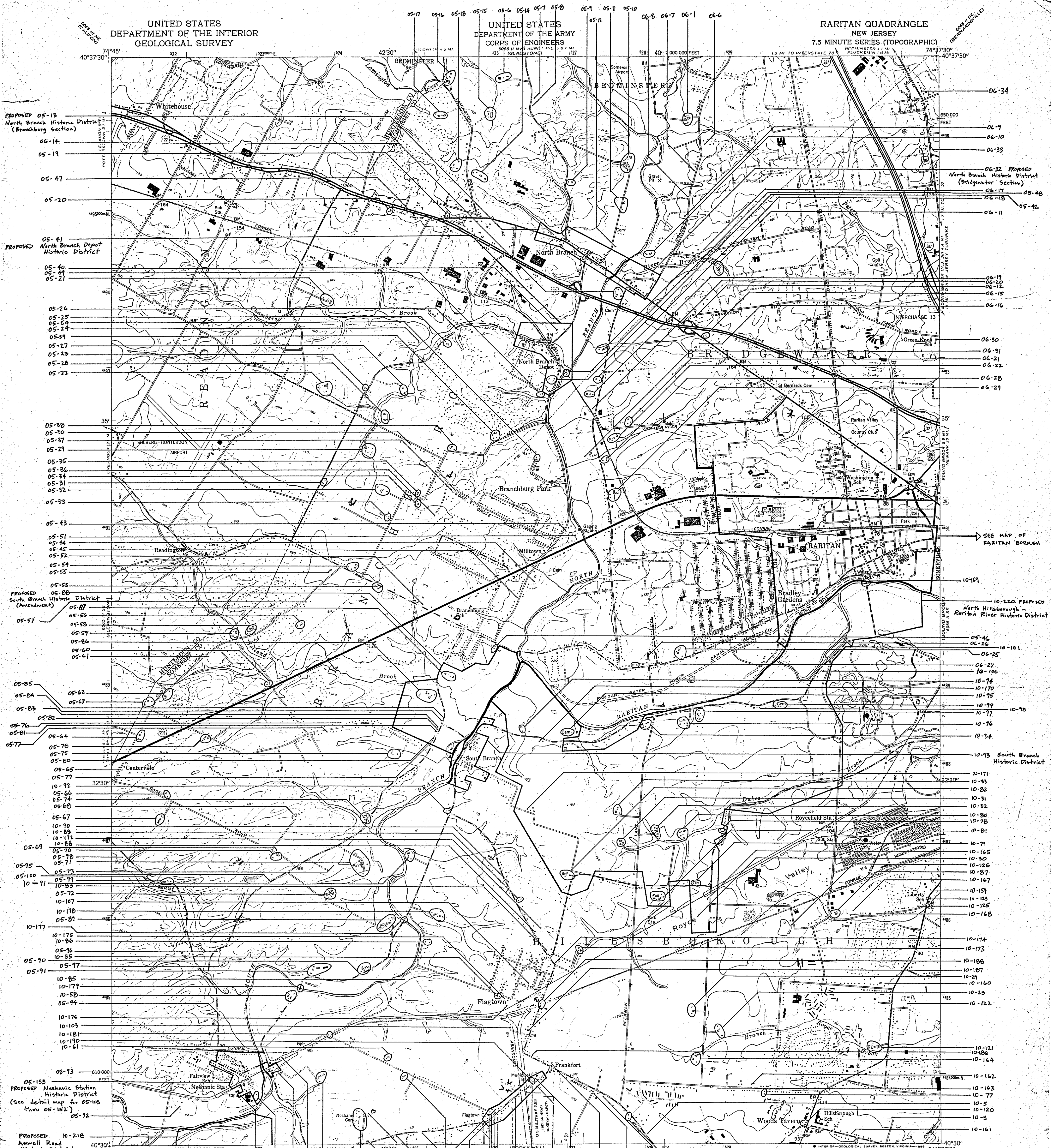
QUADRANGLE LOCATION
PLAINFIELD, N. J.
N4030-W7422.5/7.5
1955
PHOTOREVISED 1981
DMA 6165 III SW-SERIES V822
Sommerset County Cultural Resource Survey, Phase II
New Jersey Historic Sites Inventory (PH-1)
Prepared by RAM, Inc. for the Somerset County Cultural and Heritage Commission
August 1987

THIS MAP COMPLIES WITH NATIONAL MAP ACCURACY STANDARDS
FOR SALE BY U. S. GEOLOGICAL SURVEY, RESTON, VIRGINIA 22092
A FOLDER DESCRIBING TOPOGRAPHIC MAPS AND SYMBOLS IS AVAILABLE ON REQUEST

UNITED STATES
DEPARTMENT OF THE INTERIOR
GEOLOGICAL SURVEY

UNITED STATES
DEPARTMENT OF THE ARMY
CORPS OF ENGINEERS

RARITAN QUADRANGLE
NEW JERSEY
7.5 MINUTE SERIES (TOPOGRAPHIC)



- PROPOSED 05-13 North Branch Historic District (Branchburg Section)
- 06-14
- 05-19
- 05-47
- 05-20
- PROPOSED 05-41 North Branch Depot Historic District
- 05-43
- 05-49
- 05-21
- 05-26
- 05-25
- 05-50
- 05-24
- 05-51
- 05-27
- 05-28
- 05-22
- 05-30
- 05-30
- 05-37
- 05-21
- 05-35
- 05-36
- 05-34
- 05-31
- 05-32
- 05-33
- 05-43
- 05-51
- 05-44
- 05-45
- 05-52
- 05-54
- 05-55
- PROPOSED 05-53 South Branch Historic District (Amendment)
- 05-57
- 05-56
- 05-58
- 05-57
- 05-56
- 05-60
- 05-61
- 05-85
- 05-84
- 05-62
- 05-83
- 05-82
- 05-76
- 05-81
- 05-77
- 05-64
- 05-78
- 05-75
- 05-80
- 05-65
- 05-77
- 10-92
- 05-66
- 05-74
- 05-68
- 05-67
- 10-90
- 10-89
- 10-172
- 10-88
- 05-69
- 05-70
- 05-71
- 05-72
- 05-73
- 05-74
- 10-91
- 05-72
- 10-107
- 10-170
- 05-87
- 10-177
- 10-178
- 10-86
- 05-76
- 10-35
- 05-90
- 05-77
- 10-85
- 10-179
- 10-58
- 05-74
- 10-176
- 10-103
- 10-181
- 10-190
- 10-61
- 05-73
- PROPOSED 05-153 Neshaug Station Historic District (see detail map for 05-103 thru 05-152)
- 05-72
- PROPOSED 10-218 Anwell Road Historic District (northern section)

- 06-34
- 06-7
- 06-10
- 06-33
- PROPOSED 06-32 North Branch Historic District (Bridgewater Section)
- 06-17
- 05-48
- 06-18
- 05-42
- 06-11
- 06-19
- 06-12
- 06-15
- 06-16
- 06-30
- 06-31
- 06-21
- 06-22
- 06-28
- 06-29
- SEE MAP OF RARITAN BOROUGH
- 10-149
- 10-220 PROPOSED North Hillsborough - Raritan River Historic District
- 05-46
- 06-26
- 10-101
- 06-25
- 06-27
- 10-100
- 10-74
- 10-170
- 10-75
- 10-99
- 10-77
- 10-76
- 10-74
- 10-93 South Branch Historic District
- 10-171
- 10-83
- 10-82
- 10-31
- 10-82
- 10-80
- 10-78
- 10-81
- 10-71
- 10-165
- 10-90
- 10-126
- 10-87
- 10-167
- 10-151
- 10-123
- 10-125
- 10-168
- 10-174
- 10-173
- 10-188
- 10-187
- 10-21
- 10-160
- 10-28
- 10-122
- 10-121
- 10-186
- 10-164
- 10-162
- 10-163
- 10-77
- 10-5
- 10-120
- 10-3
- 10-161

Mapped by the Defense Mapping Agency
Edited and published by the Geological Survey
Control by NOS/NOAA and New Jersey Geodetic Survey
Topography by photogrammetric methods from aerial photographs taken 1942. Field checked 1942
Culture revised by the Geological Survey 1955
Polyconic projection. 10,000-foot grid ticks based on New Jersey coordinate system. 1000-meter Universal Transverse Mercator grid ticks, zone 18, shown in blue. 1927 North American Datum
To place on the predicted North American Datum 1983 move the projection lines 6 meters south and 33 meters west as shown by dashed corner ticks
Red tint indicates area in which only landmark buildings are shown
There may be private inholdings within the boundaries of the National or State reservations shown on this map

10-56
10-180
11W
204 MILES
11W
12 MILES
10-10
10-212
10-8
10-7
10-6
10-118
10-116
10-115
10-112
10-111
10-109
10-185
10-184
10-183
10-182
10-162
10-164
10-162
10-163
10-77
10-5
10-120
10-3
10-161

SCALE 1:24000
1000 0 1000 2000 3000 4000 5000 6000 7000 FEET
1 2 3 4 5 6 7 8 9 10 KILOMETER
CONTOUR INTERVAL 20 FEET
NATIONAL GEODETIC VERTICAL DATUM OF 1929
THIS MAP COMPLIES WITH NATIONAL MAP ACCURACY STANDARDS FOR SALE BY U.S. GEOLOGICAL SURVEY, RESTON, VIRGINIA 22092
A FOLDER DESCRIBING TOPOGRAPHIC MAPS AND SYMBOLS IS AVAILABLE ON REQUEST
10-194
10-197
10-195

ROAD CLASSIFICATION
Heavy-duty ——— Light-duty ———
Medium-duty ——— Unimproved dirt ———
U.S. Route ——— State Route ———
Interstate Route ———
QUADRANGLE LOCATION
NEW JERSEY

RARITAN, N. J.
40074-E6-TF-024
1955
PHOTOREVISED 1981
DMA 6065 II SW-SERIES Y822

Somerset County Cultural Resource Survey, Phase II
New Jersey Historic Sites Inventory (6-18-)
Prepared by RAM, Inc. for the Somerset County Cultural and Heritage Commission
August 1982

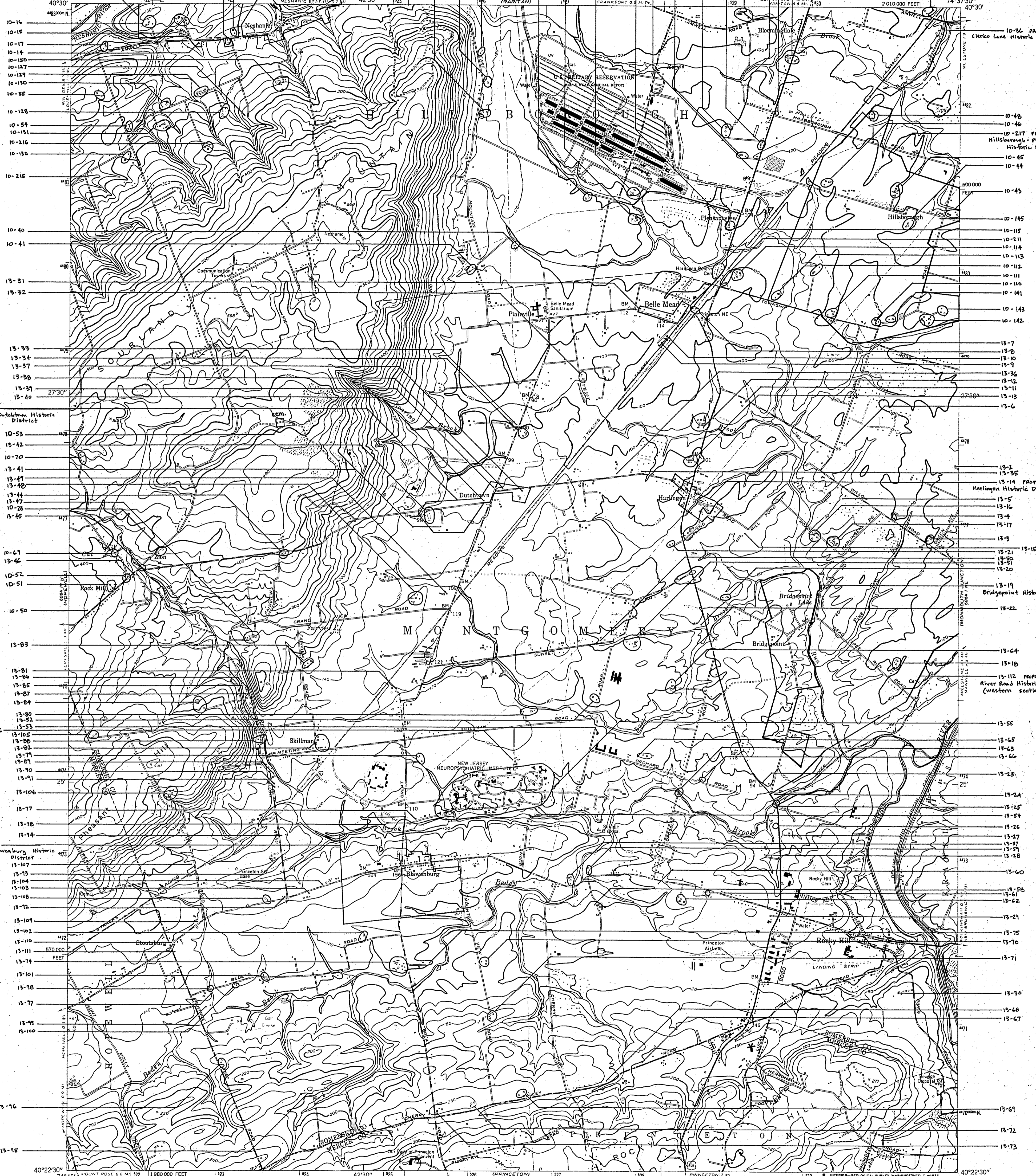
10-218 PROPOSED
Anwell Road
Historic District (southern section)

10-11
Neshaanic
Historic District

UNITED STATES
DEPARTMENT OF THE INTERIOR
GEOLOGICAL SURVEY

UNITED STATES
DEPARTMENT OF THE ARMY
CORPS OF ENGINEERS

ROCKY HILL QUADRANGLE
NEW JERSEY
7.5 MINUTE SERIES (TOPOGRAPHIC)



40°30' 40°25' 40°20' 40°15' 40°10' 40°05' 40°00' 39°55' 39°50' 39°45' 39°40' 39°35' 39°30' 39°25' 39°20' 39°15' 39°10' 39°05' 39°00' 38°55' 38°50' 38°45' 38°40' 38°35' 38°30' 38°25' 38°20' 38°15' 38°10' 38°05' 38°00' 37°55' 37°50' 37°45' 37°40' 37°35' 37°30' 37°25' 37°20' 37°15' 37°10' 37°05' 37°00' 36°55' 36°50' 36°45' 36°40' 36°35' 36°30' 36°25' 36°20' 36°15' 36°10' 36°05' 36°00' 35°55' 35°50' 35°45' 35°40' 35°35' 35°30' 35°25' 35°20' 35°15' 35°10' 35°05' 35°00' 34°55' 34°50' 34°45' 34°40' 34°35' 34°30' 34°25' 34°20' 34°15' 34°10' 34°05' 34°00' 33°55' 33°50' 33°45' 33°40' 33°35' 33°30' 33°25' 33°20' 33°15' 33°10' 33°05' 33°00' 32°55' 32°50' 32°45' 32°40' 32°35' 32°30' 32°25' 32°20' 32°15' 32°10' 32°05' 32°00' 31°55' 31°50' 31°45' 31°40' 31°35' 31°30' 31°25' 31°20' 31°15' 31°10' 31°05' 31°00' 30°55' 30°50' 30°45' 30°40' 30°35' 30°30' 30°25' 30°20' 30°15' 30°10' 30°05' 30°00' 29°55' 29°50' 29°45' 29°40' 29°35' 29°30' 29°25' 29°20' 29°15' 29°10' 29°05' 29°00' 28°55' 28°50' 28°45' 28°40' 28°35' 28°30' 28°25' 28°20' 28°15' 28°10' 28°05' 28°00' 27°55' 27°50' 27°45' 27°40' 27°35' 27°30' 27°25' 27°20' 27°15' 27°10' 27°05' 27°00' 26°55' 26°50' 26°45' 26°40' 26°35' 26°30' 26°25' 26°20' 26°15' 26°10' 26°05' 26°00' 25°55' 25°50' 25°45' 25°40' 25°35' 25°30' 25°25' 25°20' 25°15' 25°10' 25°05' 25°00' 24°55' 24°50' 24°45' 24°40' 24°35' 24°30' 24°25' 24°20' 24°15' 24°10' 24°05' 24°00' 23°55' 23°50' 23°45' 23°40' 23°35' 23°30' 23°25' 23°20' 23°15' 23°10' 23°05' 23°00' 22°55' 22°50' 22°45' 22°40' 22°35' 22°30' 22°25' 22°20' 22°15' 22°10' 22°05' 22°00' 21°55' 21°50' 21°45' 21°40' 21°35' 21°30' 21°25' 21°20' 21°15' 21°10' 21°05' 21°00' 20°55' 20°50' 20°45' 20°40' 20°35' 20°30' 20°25' 20°20' 20°15' 20°10' 20°05' 20°00' 19°55' 19°50' 19°45' 19°40' 19°35' 19°30' 19°25' 19°20' 19°15' 19°10' 19°05' 19°00' 18°55' 18°50' 18°45' 18°40' 18°35' 18°30' 18°25' 18°20' 18°15' 18°10' 18°05' 18°00' 17°55' 17°50' 17°45' 17°40' 17°35' 17°30' 17°25' 17°20' 17°15' 17°10' 17°05' 17°00' 16°55' 16°50' 16°45' 16°40' 16°35' 16°30' 16°25' 16°20' 16°15' 16°10' 16°05' 16°00' 15°55' 15°50' 15°45' 15°40' 15°35' 15°30' 15°25' 15°20' 15°15' 15°10' 15°05' 15°00' 14°55' 14°50' 14°45' 14°40' 14°35' 14°30' 14°25' 14°20' 14°15' 14°10' 14°05' 14°00' 13°55' 13°50' 13°45' 13°40' 13°35' 13°30' 13°25' 13°20' 13°15' 13°10' 13°05' 13°00' 12°55' 12°50' 12°45' 12°40' 12°35' 12°30' 12°25' 12°20' 12°15' 12°10' 12°05' 12°00' 11°55' 11°50' 11°45' 11°40' 11°35' 11°30' 11°25' 11°20' 11°15' 11°10' 11°05' 11°00' 10°55' 10°50' 10°45' 10°40' 10°35' 10°30' 10°25' 10°20' 10°15' 10°10' 10°05' 10°00' 9°55' 9°50' 9°45' 9°40' 9°35' 9°30' 9°25' 9°20' 9°15' 9°10' 9°05' 9°00' 8°55' 8°50' 8°45' 8°40' 8°35' 8°30' 8°25' 8°20' 8°15' 8°10' 8°05' 8°00' 7°55' 7°50' 7°45' 7°40' 7°35' 7°30' 7°25' 7°20' 7°15' 7°10' 7°05' 7°00' 6°55' 6°50' 6°45' 6°40' 6°35' 6°30' 6°25' 6°20' 6°15' 6°10' 6°05' 6°00' 5°55' 5°50' 5°45' 5°40' 5°35' 5°30' 5°25' 5°20' 5°15' 5°10' 5°05' 5°00' 4°55' 4°50' 4°45' 4°40' 4°35' 4°30' 4°25' 4°20' 4°15' 4°10' 4°05' 4°00' 3°55' 3°50' 3°45' 3°40' 3°35' 3°30' 3°25' 3°20' 3°15' 3°10' 3°05' 3°00' 2°55' 2°50' 2°45' 2°40' 2°35' 2°30' 2°25' 2°20' 2°15' 2°10' 2°05' 2°00' 1°55' 1°50' 1°45' 1°40' 1°35' 1°30' 1°25' 1°20' 1°15' 1°10' 1°05' 1°00' 0°55' 0°50' 0°45' 0°40' 0°35' 0°30' 0°25' 0°20' 0°15' 0°10' 0°05' 0°00'

10-16 10-15 10-14 10-13 10-12 10-11 10-10 10-9 10-8 10-7 10-6 10-5 10-4 10-3 10-2

10-128 10-127 10-126 10-125 10-124 10-123 10-122 10-121 10-120 10-119 10-118 10-117 10-116 10-115 10-114 10-113 10-112 10-111 10-110 10-109 10-108 10-107 10-106 10-105 10-104 10-103 10-102 10-101 10-100 99 98 97 96 95 94 93 92 91 90 89 88 87 86 85 84 83 82 81 80 79 78 77 76 75 74 73 72 71 70 69 68 67 66 65 64 63 62 61 60 59 58 57 56 55 54 53 52 51 50 49 48 47 46 45 44 43 42 41 40 39 38 37 36 35 34 33 32 31 30 29 28 27 26 25 24 23 22 21 20 19 18 17 16 15 14 13 12 11 10 9 8 7 6 5 4 3 2 1

10-218 PROPOSED Anwell Road Historic District (southern section)

10-11 Neshaanic Historic District

10-36 PROPOSED Clerico Lane Historic District

10-48 10-46 10-217 PROPOSED Hillsborough - Pleasant View Historic District

10-45 10-44 10-43 10-145 10-115 10-211 10-114 10-113 10-112 10-111 10-110 10-109 10-108 10-107 10-106 10-105 10-104 10-103 10-102 10-101 10-100 99 98 97 96 95 94 93 92 91 90 89 88 87 86 85 84 83 82 81 80 79 78 77 76 75 74 73 72 71 70 69 68 67 66 65 64 63 62 61 60 59 58 57 56 55 54 53 52 51 50 49 48 47 46 45 44 43 42 41 40 39 38 37 36 35 34 33 32 31 30 29 28 27 26 25 24 23 22 21 20 19 18 17 16 15 14 13 12 11 10 9 8 7 6 5 4 3 2 1

13-2 13-55 13-14 PROPOSED Hartington Historic District

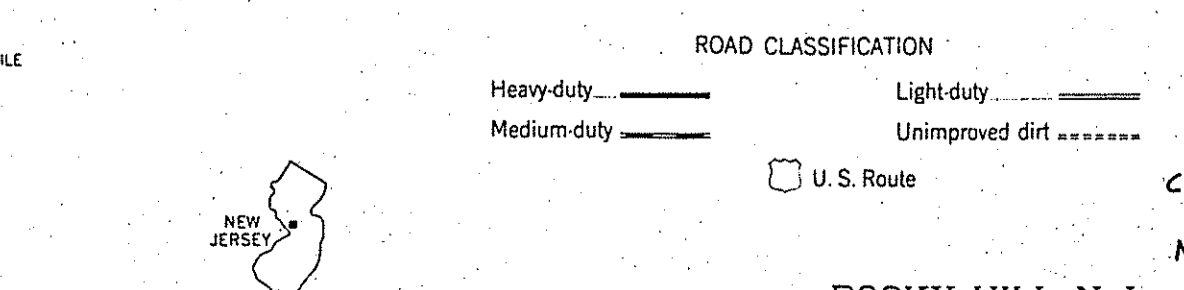
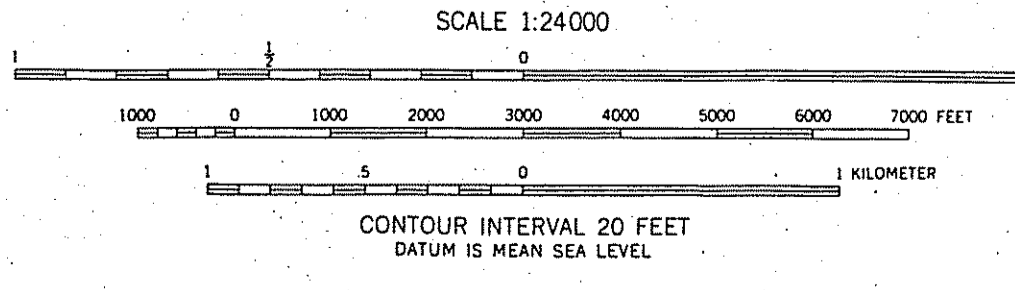
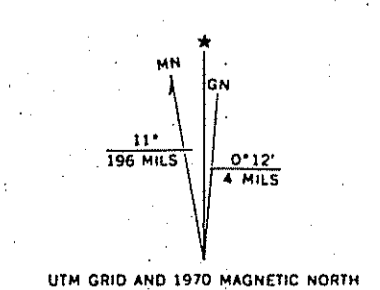
13-5 13-16 13-4 13-17 13-3 13-21 13-15 13-20 13-19 BRIDGEPOINT HISTORIC DISTRICT

13-22 13-64 13-18 13-112 PROPOSED River Road Historic District (western section)

13-55 13-65 13-66 13-25 13-24 13-25 13-25 13-26 13-27 13-28 13-60 13-58 13-61 13-62 13-21 13-75 13-70 13-71 13-30 13-68 13-67 13-61 13-72 13-73

13-43 PROPOSED D-1000 Historic District

10-53 10-42 10-70 13-41 13-41 13-42 13-43 13-44 13-47 10-28 13-45 10-67 13-46 10-52 10-51 13-83 13-81 13-86 13-85 13-87 13-84 13-80 13-82 13-83 13-84 13-85 13-86 13-87 13-88 13-89 13-90 13-91 13-106 13-77 13-78 13-74 13-76 13-77 13-78 13-79 13-80 13-81 13-82 13-83 13-84 13-85 13-86 13-87 13-88 13-89 13-90 13-91 13-106 13-107 13-108 13-109 13-110 13-111 13-112 13-113 13-114 13-115 13-116 13-117 13-118 13-119 13-120 13-121 13-122 13-123 13-124 13-125 13-126 13-127 13-128 13-129 13-130 13-131 13-132 13-133 13-134 13-135 13-136 13-137 13-138 13-139 13-140 13-141 13-142 13-143 13-144 13-145 13-146 13-147 13-148 13-149 13-150 13-151 13-152 13-153 13-154 13-155 13-156 13-157 13-158 13-159 13-160 13-161 13-162 13-163 13-164 13-165 13-166 13-167 13-168 13-169 13-170 13-171 13-172 13-173 13-174 13-175 13-176 13-177 13-178 13-179 13-180 13-181 13-182 13-183 13-184 13-185 13-186 13-187 13-188 13-189 13-190 13-191 13-192 13-193 13-194 13-195 13-196 13-197 13-198 13-199 13-200



THIS MAP COMPLIES WITH NATIONAL MAP ACCURACY STANDARDS FOR SALE BY U.S. GEOLOGICAL SURVEY, WASHINGTON, D. C. 20242 A FOLDER DESCRIBING TOPOGRAPHIC MAPS AND SYMBOLS IS AVAILABLE ON REQUEST

ROCKY HILL, N. J.
N4022.5-W7437.5/7.5
1954
PHOTOREVISED 1970
AMS 6064 1 NW-SERIES V822
August 1989

Somerset County Cultural Resource Survey, Phase II
New Jersey Historic Sites Inventory (#16-)
Prepared by RAM, Inc. for the Somerset County Cultural and Heritage Commission