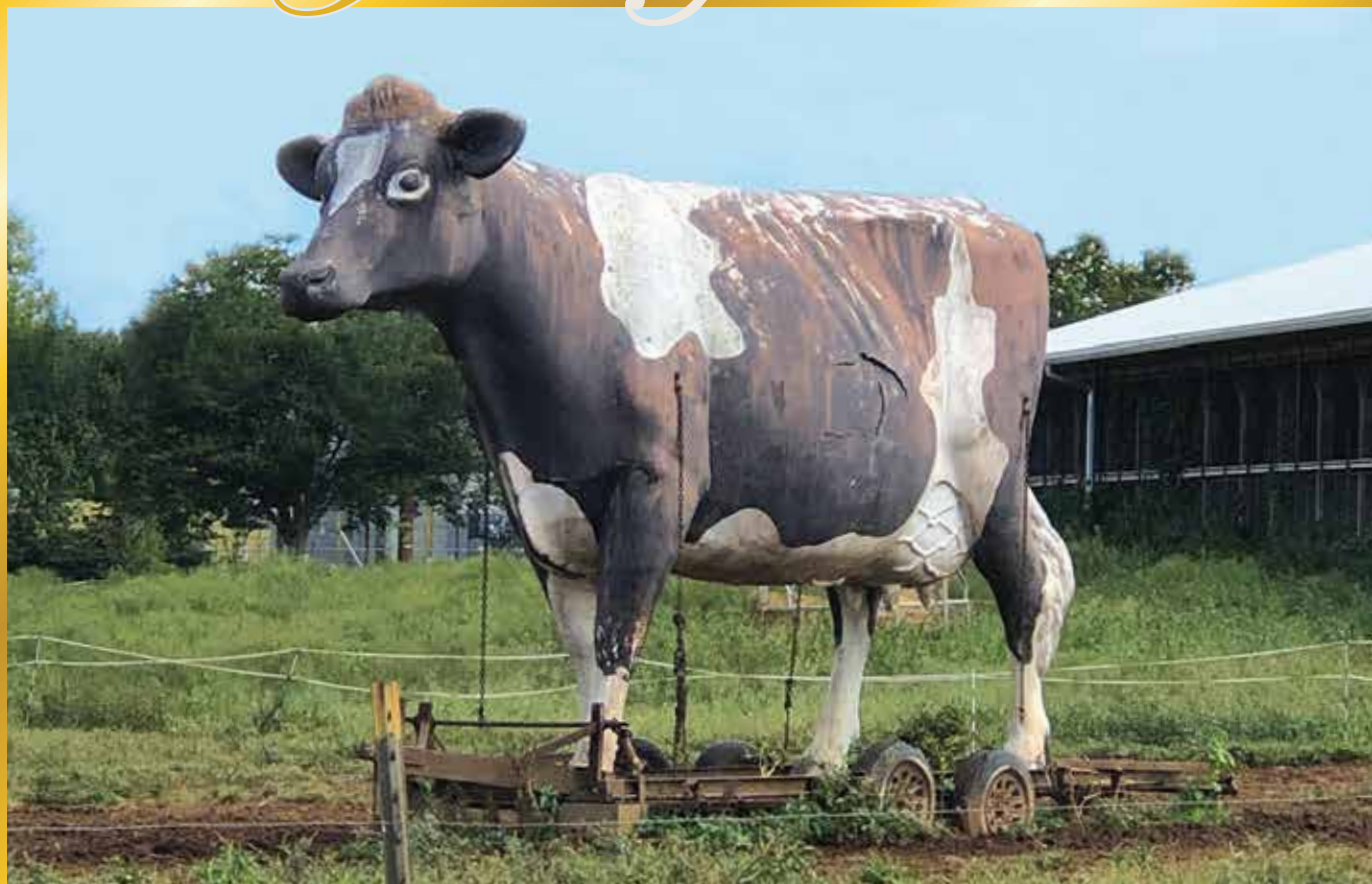


Somerset County's

Weekend Journey through the Past



Farming

Farming



★ People have farmed in Somerset County for a long time—corn has been grown here for over a thousand years! Farming is still a big part of life here today. Our farmers grow everything from lavender to llamas.

★ *Mooove over Largest Ball of Twine!*

Drive down Middlebush Road and you just might see Franklin Township's most famous cow! She was the face of Cream-o-Land Dairy before it moved to southern New Jersey. Now she watches over the last dairy farm in Somerset County.

Find more fun facts and activities at:
www.SCHistoryWeekend.com

