

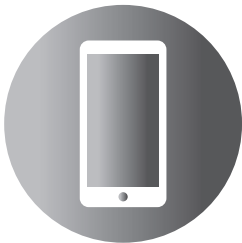
**Somerset County
Government**



FACTS AT YOUR FINGERTIPS

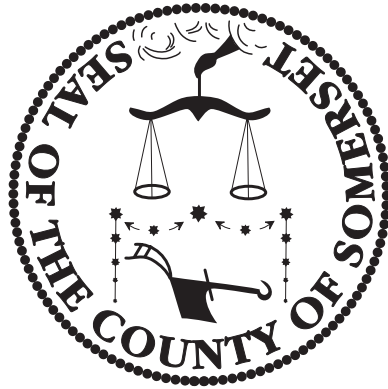


**2021
EDITION**



A Resource Guide of
County Divisions,
Programs and
Services





Somerset County

- Mission Statement-

The County of Somerset
is committed to excellence
and innovation in public service,
promoting the well-being of
all residents and communities
by providing effective, efficient
and responsive leadership.

Table of Contents

4-H Youth Development	46
9-1-1	37
24-hour Homeless Hotline	49
(ADA) Americans with Disabilities Act	4
Adopt-A-Road	51
Adoptions	54
Administration of Estates	54
Adult Program (Partial Care Program [PCP])	44
Adult Protective Services	49
Affordable Housing	9, 34
Aging, Office on	4
Agricultural Development Board	34
Agriculture & Natural Resources	46
Alcoholism and Drug Abuse Advisory Council (LACADA)	31
Arts Outreach Program	13
Benefits Programs & Counseling	24
Boarding and Rooming House Services	49
Business Partnership, Somerset County	10, 14
(CASS) County Alliance Steering Subcommittee	31
CAT (Community Access Transit) Bus	57
(CDBG) Community Development Block Grants	9
(CEHA) County Environmental Health Act	23
Census Reports	34
Chamber of Commerce	10, 14
Chargebacks for Raritan Valley Community College	20
Child Abuse	63
(CIACC) County Coordination Intra-Agency Council	63
Conservatorships	54

Construction Contracts	18, 39
Continuum of Care	9
Counseling	49
CPR	17
Crisis Negotiation Teams	35
DARE (Drug Abuse Resistance Education Program)	35
DASH (Davidson Avenue Shuttle) Bus	57
Death Claims	24
Demographic Information	34
Disabilities	4
Drug & Alcohol Program for CDL Holders	24
Economic Development	14
Education and Employment	49
Emergency Services Training Academy	17
(EAP) Employee Assistance Program	24
Environment	34
Environmental Education Center	33
(FCIU) Family Crisis Intervention Unit	63
Fire Academy (Emergency Services Training Academy)	17
Food Stamps	49
4-H Youth Development	46
County Commissioner Newsletter	36
Gardens	33
(GIS) Geographic Information System	20
Golf Courses	33
Grants	20
Graphics	36
Guardianships	54
Gun Permit Searches	2
Hazardous Materials Emergency Response Team	16

Health Insurance Portability & Accountability Act	24
Highway Development	34
Historic Preservation	13, 34
Home-Delivered Meals	4
HOME Investment Partnership Program	9
Homelessness Prevention Assistance	49
(IDRC) Intoxicated Driver Resource Center	32
Improvement Authority	20
Income Tax Assistance	61
Internet Web Site	26, 36
Intestate Estates	54
Jersey Care Medicaid	49
K-9 Unit	47
Keys for Employees	19
KROL	2
(LACADA) Local Advisory Council on Alcoholism and Drug Abuse	31
Leadership Somerset	3
Liaison to County Officials	8
Libraries	30
Mail Service	19
Medicaid	49
Megan Law Cases	2
Mental Health Board	31
Military Services	11
Missing Children	63
Mosquito Extermination/Drainage	45
9-1-1	37
Notary Public	64
Notary Public Information	11
Online Email Subscription Services	36

Oaths to Notaries	11
(OPD) Outpatient Department - Mental Health Center	43
Open Space	33
Parks	33
(PASP) Personal Assistance Services Program	4
Passport Applications	11
Phone Alert Program	61
Police Academy	35
Pool (Warrenbrook Pool)	33
Powers of Attorney	11
Print Shop	36
Probate of Wills	54
Regional Forecasts	34
Retirement Planning	24
Ridewise	57
Right-To-Know	24
(RSVP) Retired & Senior Volunteer Program	61
Safety Committee	24
School Board Elections	15
Scout Bus	57
Senior Centers	4
(SHIP) State Health Insurance Assistance Program	4
Stable (Lord Stirling)	33
S.W.A.T.	35
Technical Assistance Workshops	13
Technical Schools	60
Teen Arts Festival And Exhibition	13
(TANF) Temporary Assistance To Needy Families	49
Therapeutic Recreation Programs	33
Tips Toll Free Telephone Line	35

Trade Name Filing	11
Traffic Mitigation	34
Traffic Signals	45
Transit Improvements	34
Transportation of Senior Citizens & Persons with Disabilities	57
Treasurer	20
Tuberculosis Control Program	23
24-Hour Homeless Hotline	49
Victim-Witness Advocacy	35
Vocational Schools	60
Volunteer Services, Office of	61
Water Supply	34
Website	26, 36
Weights & Measures	62
Wills-Probate	54
Workers' Compensation Program	25
Work First NJ	49
Youth Council	31
(YSC) Youth Services Commission	63
Zoning	34

GOVERNMENT DEPARTMENTS

COUNTY ADMINISTRATOR

Colleen Mahr

Phone: 908-231-7102

Fax: 908-231-1740

AdministratorsOffice@co.somerset.nj.us

Public Information

Police Academy

Greater Raritan Workforce Development Board

Human Resources

FINANCE & ADMINISTRATIVE SERVICES

Director: Nicola Trasente

Phone: 908-231-7047

Fax: 908-575-3939

Email: FinanceDiv@co.somerset.nj.us

Adjuster
Finance/Treasurer
Information Technology
Purchasing
Records Management
Telephone Services
Weights & Measures

HUMAN SERVICES

Director: Michael Frost

Phone: 908-704-6300

Fax: 908-704-1629

Email: HumanServices@co.somerset.nj.us

Office on Aging & Disability Services
Community Development
Greater Raritan One Stop Training Div.
Juvenile Institutional Services
Mental Health Center
Office of Operations & Planning
Rutgers Cooperative Extension
Veterans Services
Volunteer Services
Youth Services

PUBLIC WORKS

Director: Paul L. McCall

Phone: 908-231-7024

Fax: 908-231-7170

Email: PublicWorks@co.somerset.nj.us

Bridges
Engineering/Soil Conservation
Facilities & Services
Recycling
Roads
Planning
 Cultural & Heritage
 Solid Waste Management
Transportation
Vehicle & Equipment Maintenance

PUBLIC HEALTH & SAFETY

Director: John Fodor (Interim)

Phone: 908-526-2500

Fax: 908-575-3933

Email: fodor@co.somerset.nj.us

911 Communications
Emergency Management
Health
Emergency Services Training Academy

Other County Government Agencies, Institutions and Affiliates

Prosecutor

Michael H. Robertson

Interim Executive County Superintendent of Schools

Roger Jinks

Board of Elections

Jerry Midgette, Administrator

Board of Social Services

Dominic Crisall, Director

Board of Taxation

Robert Vance, Administrator

Library Commission

Brian K. Auger, Director

Park Commission

Geoffrey D. Soriano, Secretary-Director

Vocational-Technical Schools

Chrys Harttraft, Superintendent

Raritan Valley Community College

Dr. Michael McDonough, President

Business Partnership of Somerset County

Chris Edwards, President & CEO

ADJUSTER'S OFFICE

Responsible for:

- Scheduling court hearings/assigning legal representation for those patients admitted to short and long-term care psychiatric facilities or in special psychiatric hospitals including Krol (Not Guilty By Reason of Insanity), Megan's Law Offenders and Sexually Violent Predators.
- Conducting mental health history searches of individuals seeking gun permits
- Determining settlement and support (financial responsibility) for patient cost of care in psychiatric hospitals

Located:

Somerset County Administration Building
20 Grove Street (Second Floor)
Somerville, NJ 08876

Contact:

Virginia G. Mastrogiovanni, County Adjuster
Phone: (908) 231-7117
Fax: (908) 429-0670
Email: Adjusters@co.somerset.nj.us

ADMINISTRATOR'S OFFICE

Responsible for:

- Day-to-day operations of Somerset County Government
- Leadership Somerset Program
- Facts at Your Fingertips Guide
(A Resource Guide of County Divisions, Programs and Services)

Located:

Somerset County Administration Building
20 Grove Street (Third Floor)
Somerville, NJ 08876

Contact:

Colleen Mahr, Administrator
Phone: (908) 231-7040

Linn Kosensky, Assistant to the Administrator
Phone: (908) 231-7081

Fax: (908) 231-1740

Email: Administratorsoffice@co.somerset.nj.us

AGING AND DISABILITY SERVICES, OFFICE ON

Responsible for:

- ADRC (Aging & Disability Resource Connection): 1-888-747-1122 (Toll free number for people age 60 and above, caregivers, adults with physical disabilities and veterans)
- Maintains compliance with the Older American's Act of 1965, as amended; the Americans with Disabilities Act (ADA) and Section 504 of the Barrier Free Code in all county buildings and programs
- Information and referral services
- Care management for people age 60 and above and their caregivers, people living with disabilities and veterans
- Education for people 60 and above and their caregivers and those with disabilities
- Outreach to homebound adults to conduct in-home assessments
- Operating 6 multi-purpose senior centers to provide nutritious meals and social activities that stimulate the mind, body and spirit
- Virtual Programming - social activities that stimulate the mind, body and spirit
- Grab and Go – Meal “take-out” Services
- Meals delivered to homebound elderly (Meals on Wheels)
- Health and wellness activities to improve functionality and quality of life
- Advocacy and legislative presence for older adults, adults with physical disabilities and veterans
- Providing counseling/guidance on medical insurance questions/problems/issues through the State Health Insurance Assistance Program (SHIP)
- Provides routine, non-medical assistance to adults with disabilities who are employed, involved in community volunteer work, or attending school through the Personal Assistance Services Program (PASP)

AGING AND DISABILITY SERVICES, OFFICE ON *(continued)*

- Provides a daily phone call by trained staff to people who live alone and feel isolated from the community due to age, health problems or living arrangements through the Telephone Reassurance Program
- Caregiver education and support
- Provides support to victims and families suffering from Alzheimer's disease and related disorders such as Down syndrome and Autism through Project LifeSaver bracelet identification-tracking program aiding

Contracts with following agencies to provide services:

- **Adult Day Care Center of Somerset County:** Adult Day Program
- **Board of Social Services:** Adult Protective Services
- **Legal Services of Northwest Jersey, Inc. (LSNWJ):** Legal Assistance/Counseling
- **Community Visiting Nurses Association (CVNA):** Certified Home Health Aides
- **Jewish Family Services:** Senior Grocery Shopping
- **Somerset County Transportation:** Assisted Transportation Services

Located:

27 Warren Street
Somerville, NJ 08876

Contact:

Joanne Fetzko, Executive Director

Phone: (908) 704-6346 or toll-free 1-888-747-1122

Fax: (908) 595-0194

Email: OfficeAging@co.somerset.nj.us and
DisabilityServices@co.somerset.nj.us

Website: <https://www.co.somerset.nj.us/government/human-services/aging-disability-services>

BOARD OF COUNTY COMMISSIONERS

Responsible for:

- The operations of county government

County Commissioner Meeting Information:

- Regular County Commissioner meetings are held the second and fourth Tuesdays of each month at 6:00 p.m. unless otherwise advertised
- Agenda/Work Sessions are held the second and fourth Tuesdays of each month at 5:00 p.m., unless otherwise advertised
- Special meetings called and advertised as necessary

Located:

Somerset County Administration Building
20 Grove Street (Third Floor)
Somerville, NJ 08876

Board of County Commissioners:

Office: (908) 231-7030

Fax: (908) 231-8754

Email: Commissioners@co.somerset.nj.us

Shanel Y. Robinson, County Commissioner Director Ext. 7676

Sara Sooy, County Commissioner Deputy Director..... Ext. 7673

Melonie Marano, County Commissioner Ext. 7033

Paul M. Drake, County Commissioner Ext. 6016

Douglas M. Singleterry, County Commissioner Ext. 7036

BRIDGE DIVISION

Responsible for:

- Construction, maintenance and repair of all county bridges
- Maintenance and repair of county guiderails
- Maintenance and repair of county dams
- Maintenance and repair of county parking lots

Located:

Department of Public Works
South County Facility
410 Roycefield Road
Hillsborough, NJ 08844

Contact:

Vincent Russo, Supervisor of Roads and Bridges
Phone: (908) 541-5012
Fax: (908) 526-2450
Email: Roads&Bridges@co.somerset.nj.us

CLERK OF THE BOARD

Responsible for:

- Acting as liaison to county officials and the public.
- Administrative and supervisory functions of the Board of County Commissioners
- Preparing agendas
- Ensuring compliance of laws governing the county
- Preparing correspondence, legal notices, resolutions, contracts, and minutes

Located:

Somerset County Administration Building
20 Grove Street (Third Floor)
Somerville, NJ 08876-1262

Contact:

Kelly L. Mager, Clerk of the Board
Phone: (908) 231-7030
Fax: (908) 231-8754

COMMUNITY DEVELOPMENT OFFICE

Responsible for:

- Community Development Block Grant (CDBG)
- HOME Investment Partnership Program
- Homelessness Trust Fund
- Homelessness Trust Fund Rental Assistance Program
- Annual Point in Time Survey
- Continuum of Care Committee

Located:

27 Warren Street (Fourth Floor)
Somerville, NJ 08876

Contact:

Kimberly Cowart, Director
Phone: (908) 541-5756
Fax: (908) 575-3935
Email: CommDev@co.somerset.nj.us

Affordable Housing & Mt. Laurel Housing are not part of the county. Please refer callers to the Central Jersey Housing Resource Center (CJHRC) at (908) 704-8901.

COUNTY TOURISM

Somerset County Business Partnership

The Somerset County Business Partnership, with the support of the Somerset County Board of County Commissioners, serves as Somerset County's officially designated destination marketing organization (DMO). Its mission is to advance the local economy by sustainably promoting the area's outstanding travel products and experiences, and to offer a variety of useful services to residents, business travelers and leisure visitors. The Somerset County Visitor Information Center is located at 360 Grove Street in Bridgewater, NJ.

Located:

360 Grove Street
Bridgewater, NJ 08807

Contact:

Melissa DeFreest, Director of Tourism
Phone: (908) 218-4300 x30
Email: mdefreest@scbp.org
Website: www.VisitSomersetNJ.org

COUNTY CLERK

Responsible for:

- **Elections**
 - Ballot Design and Printing
 - Candidate Petitions
 - Certification of Election Results
 - Vote By Mail Ballots
- **Land Record Recording**
- **Land Record Access**
- **Military Services**
 - Discharge Filing
 - Gold Star Parent Cards
 - Peddlers License
 - Veteran ID Cards
- **Passport Applications**
- **Trade Name Filing**

Located:

Somerset County Administration Building
20 Grove Street (First Floor)
Somerville, NJ 08876-1262

Contact:

Steve Peter, County Clerk
Phone: (908) 231-7013

Maureen Coxwell, Deputy Clerk
Phone: (908) 231-7012

Fax: (908) 575-3930

Email: CountyClerk@co.somerset.nj.us

Hours:

8:15 a.m. - 4:00 p.m. • Monday - Friday

Please refer all court-related questions to 231-7014.

COUNTY COUNSEL

Responsible for:

- General legal counsel; review and preparation of correspondence, contracts, resolutions, and other legal documentation
- County litigation matters
- Legal matters of all county departments, divisions, and offices

Located:

Office of the County Counsel
20 Grove Street
Somerville, NJ 08876

Contact:

Joseph DeMarco, County Counsel

Phone: (908) 203-6144

Fax: (908) 231-8754

Email: CountyCounsel@co.somerset.nj.us

CULTURAL & HERITAGE COMMISSION

Responsible for:

- Administering of 3 grant programs: the New Jersey State Council on the Arts Local Arts Program Grant; the New Jersey Historical Commission County History Partnership Program Grant; and the Somerset County Historic Preservation Grant.
- Planning and coordinating public history programming such as the annual award-winning collaborative heritage tourism program, Somerset County Journey through the Past.
- Planning and administering the annual Somerset County Teen Arts Festival.
- Sponsoring and planning the biennial Excellence in the Arts and Historic Preservation and History awards programs.
- Planning, executing and maintaining creative placemaking and public art projects such as the Gallery 24/7: Art on Traffic Control Boxes, supporting creative placemaking and other public art in local communities and collaborating with other divisions of government and organizations to integrate the arts into non-traditional venues.
- Planning and sponsoring professional development, technical assistance workshops and arts outreach programs.
- Expansion and maintenance of a directory of county arts and history organizations and historic sites.
- Reviewing the projects of other county divisions for historic impact.
- Administering the county's historic marker program.

Located:

Somerset County Administration Building
20 Grove Street (Second Floor)
Somerville, NJ 08876-1262

Contact:

Kaitlin Bundy, Manager
Phone: (908) 231-7110
Fax: (908) 707-1749

ECONOMIC DEVELOPMENT

Somerset County Business Partnership

The Somerset County Business Partnership, with the support of the Somerset County Board of County Commissioners, serves as Somerset County's economic development agency. The SCBP delivers business resources to help companies retain and attract talent by creating vibrant connections among partners and promoting Somerset County, NJ as a prosperous and sustainable community in which to live, work, learn, and play. A federally approved Comprehensive Economic Development Strategy guides our efforts and connects us to the work of the Somerset County Planning Board in promoting job creation and private sector economic investment in our community. The SCBP also maintains a One Stop Center for business and municipal assistance as a single point of contact for access to local redevelopment resources, business related incentives, and guidance in regulatory and approvals processes.

Located:

360 Grove Street
Bridgewater, NJ 08807

Contact:

John P. Maddocks, Vice President, Economic Development
Phone: (908) 218-4300
Fax: (908) 722-7823
Email: info@scbp.org
Web: www.scbp.org

ELECTION BOARD

Responsible for:

- Maintaining and storing voting machines (Custodian of the county's voting machines)
- Overseeing all elections held in Somerset County
- Recording party affiliation declarations and changes
- Maintaining Statewide Voter Registration Database (SVRS)
- Registering voters
- Transferring and processing all voting records
- Working with the public and candidates
- Printing of poll books
- Recruits, appoints, trains and supervises district board workers
- Certifies polling places for election days (all must be ADA compliant)
- Issues challenger permits and badges
- Processing and Canvassing Mail In and Provisional Ballots
- Maintaining election district boundaries

Located:

Somerset County Administration Building
20 Grove Street (First Floor)
Somerville, NJ 08876

Contact:

Jerry L. Midgette, Esq., Administrator
Phone: (908) 231-7085
Fax: (908) 231-9465
Email: ElectionBd@co.somerset.nj.us

EMERGENCY MANAGEMENT

Responsible for:

- Development and maintenance of County Emergency Operations Plan
- Development and maintenance of County Fire and EMS mutual Aid Plans
- Development and maintenance of County Technical Rescue Inventory
- National Incident Management System Coordination
- Oversight of twenty-one municipal emergency management programs
- Partnering with Planning Division, development and maintenance of County All-Hazards Mitigation Plan
- County Emergency Operations Center
- Emergency Response Teams
 - o Fire Coordination
 - o EMS Bureau & EMS Coordination
 - o Rescue Task Force
 - o Hazardous Materials Emergency Response Unit
 - o Incident Support Team
 - o Radio Amateur Civil Emergency Service
 - o County Animal Response Team
 - o Search and Rescue Team
 - o County Emergency Response Team

Physical Location:

402 Roycefield Road
Hillsborough, NJ 08844

Mailing Address:

P.O. Box 3000
Somerville, NJ 08876

Contact:

Douglas J. Vornlocker, Director
Phone: (908) 725-5070
Fax: (908) 725-5077
Email: EmergencyMgmt@co.somerset.nj.us

Hours:

8:00 a.m. - 4:30 p.m. • Monday - Friday

EMERGENCY SERVICES TRAINING ACADEMY

Responsible for:

- Instruction and training of First Responders – private and public sectors

Programs Offered By The Academy:

- Amateur Radio
- First Aid and CPR (including pets)
- Emergency Medical Technician
- Firematics
- Hazardous Materials (HAZMAT) Response
- Incident Management
- Technical Rescue (Ice, Water, Confined Space, Rope, Trench, Structure Collapse, Vehicle Extrication)

Physical Location:

402 Roycefield Road
Hillsborough, NJ 08844

Mailing Address:

P.O. Box 3000
Somerville, NJ 08876

Contact:

Douglas J. Vornlocker, Director
Phone: (908) 725-5070
Fax: (908) 725-5077
Email: TrainingAcademy@co.somerset.nj.us

Hours:

8:00 a.m. - 4:30 p.m • Monday - Friday

ENGINEERING

Responsible for:

- Coordinating and overseeing construction and modification of county-owned building structures
- Construction, design, maintenance, and repair of county roads, bridges, and storm water drainage systems
- Construction and design of Park Commission facilities
- Construction contracts

Located:

County Administration Building
20 Grove Street (Second Floor)
Somerville, NJ 08876

Contacts:

Matthew D. Loper, County Engineer
Adam Slutsky, Assistant County Engineer
Phone: (908) 231-7024
Fax: (908) 231-7170
Email: Engineering@co.somerset.nj.us

Hours:

8:00 a.m. - 4:30 p.m. • Monday - Friday

FACILITIES AND SERVICES

Responsible for:

- Operation, maintenance and repair of all general County government facilities (including rented facilities) & grounds:
 - heating and cooling
 - electrical
 - emergency generators & fire alarm systems
 - plumbing
 - structural, cosmetic & furnishing components
 - building renovations and repairs
 - warehousing, shipping & receiving
 - lawn, landscape and pavement maintenance
 - parking
 - mail service
 - keys
 - snow & ice removal
 - moving of equipment, furniture & supplies
 - setups for meetings conferences, training and events
 - Management of contracted services:
 - elevators
 - detection & alarm systems
 - fire suppression
 - HVAC
 - housekeeping
 - interior plantscape
 - locksmith
 - pest & weed control

Located:

80 East High Street
Somerville, NJ 08876

Contact:

Greg Thompson, Director
Phone: (908) 231-7001
Fax: (908) 707-1782
Email: thompson@co.somerset.nj.us

Hours:

7:00 a.m. - 4:30 p.m. • Monday - Friday

FINANCIAL SERVICES

Responsible for:

- Financial affairs of the county
- Managing, planning, organizing, accounting for and controlling the County's funds
- Accounts payable & receivable
- Asset accounting
- Bonding and debt management
- Preparing county budget (annually)
- Budget information
- General ledger
- Grants Management
- Payroll
- Business Innovation and Data Analytics
- GIS
- Chargebacks for Raritan Valley Comm. College

TREASURER

- Custodian of Funds for Somerset County Library Commission, the Somerset County Joint Insurance Fund and the Southern Skyland Regional Health Insurance Fund
- General ledger and accounting services for the Improvement Authority and the County Park Commission

IMPROVEMENT AUTHORITY

- Provides equipment lease financing and capital project funding alternatives for: municipalities, school districts, fire districts, volunteer fire & rescue and not-for-profits.

Located:

Somerset County Administration Building
20 Grove Street (Third Floor)
Somerville, NJ 08876

Contact:

Yvonne Childress, Director of Fiscal Operations
Phone: (908) 231-7631
Fax: (908) 575-3914
Email: Finance@co.somerset.nj.us

Hours:

8:00 a.m. - 5:00 p.m. • Monday - Friday

GREATER RARITAN ONE STOP CAREER TRAINING SERVICES CENTER

(Serving Hunterdon and Somerset Counties)

Responsible for:

Providing an array of career and vocational services to eligible* adults and youth who are unemployed/underemployed.

Services include:

- Individual career counseling and vocational guidance, provided by state certified career counselors
- Services for specialized populations including veterans, youth, 55+, ex-offenders, public assistance recipients and those living with a disability
- Aptitude, interest and skill based assessments to guide career exploration
- A resource area with free access to computers, phone, fax and copiers for active job seekers
- Workshops that provide the tools and skills needed to land a job in today's competitive market
- Workforce Learning Link services for those who are in need of Adult Basic Education, High School Equivalency, English as a Second Language and fundamental computer skills.
- Training grants that serve to upgrade skills and increase job seekers' marketability and ability to secure employment
- On-the-job-training grants that allow employers to make an investment in prospective new hires who would benefit from business-specific learning
- Targeted, on-site recruitment events that bring together job seekers and businesses who have job openings and are ready to hire
- Free labor market resources and information

** Eligible as determined by the Workforce Innovation and Opportunity Act and Work First New Jersey and in compliance with federal and state mandates.*

Located:

27 Warren Street, Somerville, NJ 08876-1262

6 Gauntt Place, Building 2 (Lower Level), Flemington, NJ 08822

Contact:

Monica Mulligan, Director

Phone: (908) 704-6326

Fax: (908) 253-0180

Email: onestop@co.somerset.nj.us

GREATER RARITAN WORKFORCE DEVELOPMENT BOARD

(Serving Hunterdon and Somerset Counties)

Responsible for:

The Greater Raritan Workforce Development Board (GRWDB), in partnership with the Board of County Commissioners of Hunterdon and Somerset counties, is responsible for planning and directing career-related services to employers and job seekers in the two counties. This includes the allocation of approximately \$3 million in federal Workforce Innovation and Opportunity Act (WIOA) and state WorkFirst New Jersey funds to help unemployed and underemployed residents secure education and training to obtain the skills most in-demand by regional employers. Administered through the Greater Raritan One-Stop Career Training Center, funding is also available for individuals to secure basic skills-enhancement as well as work-readiness training and education for youth ages 16-24, and other distinct populations, including veterans, those with disabilities, those in re-entry, and those accessing literacy services. Community members also can access these free services virtually: career workshops, job search and job listings, resume reviews, career-coach consultation and sign up for SkillUp Greater Raritan, an online learning portal. The Board is comprised of business, education, non-profit and other community leaders who work with GRWDB staff and four committees to identify the needs of employers and skills of job seekers, leverage federal and state workforce grants, collaborate with system partner organizations, and set policy and program direction that leads to a robust local workforce system.

Located:

27 Warren Street (Second Floor)
Somerville, NJ 08876

Contact:

Paul Grzella, Director
Phone: (908) 541-5790
Fax: (908) 253-0180
Email: info@thegrwdb.org
Website: www.thegrwdb.org
Mobile: text "onestop" to 56512 for weekly alerts about system services

HEALTH DIVISION

Responsible for:

- Community-based public health services delivery through contracts with seven municipalities (Bedminster, Bound Brook, Far Hills, Franklin, Manville, North Plainfield, Raritan, and Somerville)
- County Agency for Bioterrorism & General Emergency Preparedness and Response, including Medical Reserve Corps (MRC) activities
- Environmental quality assurance in Somerset County through enforcement of County Environmental Health Act (CEHA)
- Administering contracted regional Tuberculosis Control Program
- Administering Regional Chronic Disease Coalition (RCDC) of Morris and Somerset Counties

Located:

Somerset County Department of Health
27 Warren Street (Third Floor)
Somerville, NJ 08876

Contact:

Dr. Namitha Reddy, Director/Health Officer
Phone: (908) 231-7155
Fax: (908) 704-8042
Email: HealthDept@co.somerset.nj.us

HUMAN RESOURCES

Responsible for:

- Accident Reports Ext. 6054
- Attendance Program, Family and Medical Leave, Extended Sick Leave, doctor's notes, Leave Without Pay. Ext. 6054
- Benefits Program and Counseling Ext. 6066
- Blood Drive and Flu Shots Ext. 7094
- COBRA
(Consolidated Omni Budget Reconciliation Act of 1985) Ext. 6066
- COBRA Billing Ext. 6066
- Compensation/Classification Ext. 7122
- Coresource Claims Ext. 6066
- Death claims Ext. 6061
- Deferred Compensation Ext. 6061
- Drug and Alcohol Program for
Commercial Driver's License (CDL) holders Ext. 7127
- Educational Reimbursement Ext. 7094
- Employee Assistance Program (EAP) Ext. 6061
- Grievances Ext. 7122
- HAY Evaluation Program Ext. 7122
- Health Fair and Flu Shots Ext. 7094
- Health Insurance Portability and Accountability Act (HIPAA) Ext. 7506
- Health Benefit Certificates Ext. 7506
- Job Description Classification Ext. 7122
- Joint Insurance Fund (JIF) Ext. 7506
- Labor Negotiations Ext. 7122
- NJ Division of Pension's MBOS Ext. 7094
- Notary Public - Free Ext. 6064
- New Employee Orientation Ext. 7094
- Pension System Ext. 6061
- Policy and Procedures Ext. 6061
- Retirement Planning and Counseling Ext. 6061
- Right-to-Know Ext. 7506
- Safety Committee, Training and Investigations Ext. 7506

HUMAN RESOURCES

(continued)

- Service Recognition Program Ext. 7094
- Training and Development Ext. 7094
- Vacancy Listings..... Ext. 7127
- Vista Issues..... Ext. 6013
- Workers' Compensation Program Ext. 7127

Located:

Somerset County Administration Building
20 Grove Street (Third Floor)
Somerville, NJ 08876

Contact:

John Bruno, Director
Phone: (908) 231-7120
Fax: (908) 575-9309
Email: HumanResources@co.somerset.nj.us

INFORMATION TECHNOLOGY (I.T.)

Responsible for:

- Designing, developing, and maintaining computer programs and networked systems county wide.
- Develops and maintains the county's Web-site (www.co.somerset.nj.us) and various others.
- Investigate and research the latest state of the art technology for possible implementation.
- Overseeing, recommending and maintaining the county network and associated equipment, locally and remotely.
- Maintains all Building to Building fiber and Wireless Communication.
- Maintaining over 1600 network users and associated equipment and software.
- Verifying purchases relating to hardware, software, and miscellaneous equipment.
- Implementing and maintaining the county's video and access control security systems.
- Designed, developed and maintains the county's Voice Over Internet Protocol (VOIP) system.
- Other supported agencies include the municipal health departments, county senior centers, Somerville Borough, the Board of Social Services and the Park Commission.

Located:

Somerset County Administration Building
20 Grove Street (Lower Level)
Somerville, NJ 08876

Contact:

Robert J. Klingel, Director
Phone: (908) 231-7198
Fax: (908) 575-3909
Help Desk (908) 231-7077
Email: ITDiv@co.somerset.nj.us

JAIL

Responsible for:

The Somerset County Jail is the designated holding facility for individuals who are remanded to custody within the county. Inmates are held on a temporary basis while awaiting trial or disposition of their charges, awaiting transport after being convicted and sentenced to one year or more in state prison, or awaiting transport to another county or jurisdiction while on a temporary hold for that jurisdiction. Inmates are held on a permanent basis while serving a sentence from a municipal court, of up to 180 days, or while serving the sentence of a superior court, of up to 364 days.

While an inmate is incarcerated at the Somerset County Jail, it is the staff's responsibility to safeguard the public by ensuring that the inmate is securely confined within the facility, and to fairly and impartially supervise the day-to-day movements of the inmate population and ensure they receive appropriate food, clothing, shelter, and medical care. Custody Staff must also ensure that inmates observe the rules and regulations of the facility and interact appropriately with staff members and other inmates.

Located:

40 Grove Street
Somerville, NJ 08876

Contact:

Paul A. Kaminsky, Warden
Phone: (908) 231-7150, Ext. 7148
Fax: (908) 231-0095
(908) 231-0156

Hours:

8:00 a.m. - 4:00 p.m. • Monday - Friday

Jail Desk:

24 Hours: (908) 231-7150
Email: Jail@co.somerset.nj.us

JUVENILE INSTITUTIONAL SERVICES

Responsible for:

- **Juvenile Detention:** Somerset County contracts with Middlesex County for secure care in its 100 bed juvenile detention facility in North Brunswick. While in detention, juveniles are provided with education, crisis counseling and basic medical services. Youth may be placed in detention upon arrest or at time of disposition.
- **Home Detention Program (HDP):** Program is designed to provide an alternative to secure care for youth 12 - 18 years old. Referred by the Family Court Judge, youth are monitored 24/ 7 by electronic monitoring equipment, as well as daily face to face and phone contact. Youth are also provided with intensive case management services that connects them with school, mental health and substance abuse counseling and employment.
- **Advanced House Arrest (AHA):** Program is designed to work with youth referred by the court in order to return them safely into the community with supervision from program staff and the use of an advanced biometric voice recognition system.
- **Juvenile Justice Intensive Case Management Program (JJICM):** Program is designed to reduce the number of youth placed in detention from a Violation of Probation and to connect youth with community based services. Youth are provided with intensive case management in an effort to connect them with school, counseling, substance abuse treatment and employment.
- **Question & Answer Line (QAL),** is a resource line for youth and their families who have had police and/or court contact to call in order to receive information and referrals to local services such as substance abuse treatment, mental health treatment, individual counseling and family counseling, and to assist families with navigating the various youth systems (school, courts and children's behavioral health). Youth and parents can access this line 24 hours a day, 7 days a week. All calls and emails will be returned within 24 hours. All calls are confidential and there is no cost or fee to the youth or family for this service. QAL can be accessed by calling 908-704-6355 or sending an email to QAL@co.somerset.nj.us

JUVENILE INSTITUTIONAL SERVICES

(continued)

- **Firewatch Program:** Program is designed to reduce fire-setting behavior in children from early childhood through 17 years of age using prevention, identification, education and treatment. Using trained fire service personnel affiliated with the FireWatch program, referred youth and parent sit down together with an Evaluator to conduct a fire setting behavior evaluation which makes recommendations for treatment.
- **Advanced Station House Adjustment (ASHA):** Provides intensive case management, community service activities, and referral to support services as needed for youth who have a police contact after completing a Station House Adjustment at Middle Earth. Referrals are made by police departments directly to the Station House Adjustment Coordinator at Middle Earth in Bridgewater, who then determines if assignment to ASHA is appropriate.

Located:

27 Warren Street (Second Floor)
Somerville, NJ 08876-1262

Contact:

Monica Mulligan, Director
Phone: (908) 704-6326
Fax: (908) 253-0180
Email: Juvenile@co.somerset.nj.us

LIBRARY

Somerset County Library System:

Brian K. Auger, County Library Administrator

Email: bauger@sclibnj.org

Phone: (908) 458-8401

Fax: (908) 707-8324

Website: www.sclsnj.org

Mailing Address:

P.O. Box 6700, Bridgewater, NJ 08807

Bridgewater Branch: Cindy Mangel, Manager of Branch Services
1 Vogt Dr., Bridgewater (908) 458-8416

Bound Brook Branch: Catherine DeBerry, Branch Manager
402 East High St, Bound Brook (908) 458-8411

Branchburg Reading Station: Cindy Mangel, Manager of Branch Services
Olive Street, Neshanic Station (908) 458-8416

Hillsborough Branch: Karen Pifher, Manager of Branch Services
Municipal Complex (908) 458-8421
379 South Branch Road, Hillsborough

Manville Branch: Nanette Peterson, Branch Manager
100 South 10th Avenue, Manville (908) 458-8425

Mary Jacobs Branch: Lesley Koble, Branch Manager
64 Washington Street, Rocky Hill (908) 458-8431

North Plainfield Branch: Christal Blue, Branch Manager
6 Rockview Ave, North Plainfield (908) 458-8436

Peapack-Gladstone Branch: Melissa Banks, Branch Manager
Municipal Complex, Main Street, Peapack (908) 458-8441

Somerville Branch: Rebecca Crawford, Branch Manager
35 West End Avenue, Somerville (908) 458-8446

Warren Branch: Lauren Ryan, Manager of Branch Services
42 Mountain Blvd., Warren Township (908) 458-8451

Washington Valley Reading Station: Cindy Mangel
Washington Valley Road, Martinsville Manager of Branch Services
(908) 458-8416

Watchung Branch: Hannah Kerwin, Branch Manager
12 Stirling Road, Watchung (908) 458-8456

*Hours vary from branch to branch.
Please call individual branches for hours or check the website at sclibnj.org.*

OFFICE OF OPERATIONS & PLANNING

Responsible for:

- Administering funds for programs which work to address economic self-sufficiency, mental health, alcoholism and substance abuse issues
- Assessing human services, mental health, and substance abuse needs of county residents
- Developing needed programs and evaluating program performance
- Insuring fiscal and programmatic management for various state/ federal grants and administering federal, state and county funding to municipalities and non-profit organizations
- Planning for addressing human services, mental health and substance abuse needs within the county
- Providing education, information and referral services to residents
- Providing technical assistance to agencies and municipalities
- Responding to public inquiries, providing information to the public concerning services and events
- Coordinates planning with all divisions within the Department of Human Services
- AFN Coordination (Access and Functional Needs)

Councils:

- County Youth Council
- Human Services Advisory Council (HSAC)
- Mental Health Board (MHB)
- Professional Advisory Committee (PAC)
- Local Advisory Council on Alcoholism and Drug Abuse (LACADA)
- Providers Advisory Council on Alcoholism & Drug Abuse (PACADA)
- County Alliance Steering Subcommittee (CASS)

OFFICE OF OPERATIONS & PLANNING

(continued)

Programs:

- Intoxicated Driver's Resource Center (IDRC) is a court ordered program for containing, educating, screening and/or referring of Driving Under the Influence offenders

Located:

27 Warren Street (Third Floor)
Somerville, NJ 08876

Contact:

Johanna Moore, Human Services Planning Administrator
Michael Frost, Human Services Director
Phone: (908) 704-6300
Fax: (908) 704-1629
Email: HumanServices@co.somerset.nj.us

PARK COMMISSION

Responsible for:

- Colonial Park, Duke Island Park, East County Park, Howe Athletic Complex, Little Brook Sanctuary, Lord Stirling Park, Mountain View Park, Natirar Park, North Branch Park, North Branch Greenway Park, Skillman Park, Sourland Mountain Preserve, Torpey Athletic Complex, Washington Rock Park, and Washington Valley Park(908) 722-1200
- Environmental Education Center(908) 722-1200
- Lord Stirling Stable.....(908) 722-1200
- Warrenbrook Pool(908) 722-1200
- Golf Courses: Green Knoll, Neshanic Valley, QuailBrook, Spooky Brook and Warrenbrook.....(908) 722-1200
- Leonard J. Buck Garden(908) 722-1200
- Rudolph van der Goot Rose Garden(908) 722-1200
- Therapeutic Recreation Programs(908) 526-5650

Some Activities:

Athletic Field Permits, Environmental Education programs and events, Equestrian Programs, Concerts, Dog & Horse Show Permits, Showmobile, Festivals, Flying Field, Golf Tournaments, Putting Course, Cross Country Skiing, Tennis Courts, Seasonal Special Events, Swimming, Therapeutic Recreation programs, trips, camp, and Wedding Picture Permits

Located:

355 Milltown Road
Bridgewater, NJ 08807

Mailing Address:

P.O. Box 5327
North Branch, NJ 08876

Contact:

Phone: (908) 722-1200
Fax: (908) 722-6592
Website: www.somersetcountyparks.org

Headquarters Office Hours:

8:00 a.m. - 4:30 p.m. • Monday - Friday
All other facilities are open seven days a week (seasonally).

PLANNING

Responsible for:

- Affordable housing studies Ext. 7157
- Agricultural Development Board.....(908) 541-5774
- Approval of land dev. applications Ext. 7106
- Census reports(908) 541-5774
- Demographic information(908) 541-5774
- Comprehensive Economic Development Strategy (CEDs) ... Ext. 7178
- Energy Council Ext. 7178
- Environment(908) 541-5774
- Farmland Preservation.....(908) 541-5774
- Highlands..... Ext. 7106
- Highway development(908) 541-5774
- Historic preservation Ext. 7106
- Open space Ext. 7021
- General Planning information..... Ext. 7021
- Regional forecasts(908) 541-5774
- Regional Center Ext. 7453
- State Plan Ext. 7178
- Traffic mitigation(908) 541-5774
- Transit improvements(908) 541-5774
- Wastewater management (sewer)..... Ext. 7157
- Water supply Ext. 7183
- Zoning ordinances Ext. 7106

Located:

Somerset County Administration Building
20 Grove Street (Second Floor)
Somerville, NJ 08876

Contact:

Walter C. Lane, AICP/PP, Director
Anthony V. McCracken, Sr., AICP/PP, Asst. Dir.
Phone: (908) 231-7021
Fax: (908) 707-1749
Email: PlanningBd@co.somerset.nj.us
Website: www.co.somerset.nj.us/planweb/index.htm

PROSECUTOR

(County's Chief Law Enforcement Officer)

Responsible for:

- Coordinating uniform law enforcement policy with local police departments
- County Organized Crime & Narcotics Task Force
- County Police Academy
- County S.W.A.T., Crisis Negotiation and Dive Rescue Teams
- County Vehicular Homicide Task Force and Collision Analysis Reconstruction Team
- County Arson Task Force
- DARE (Drug Abuse Resistance Education Program)
- Investigating and prosecuting criminal law violations, juvenile offenses and domestic violence
- County Crime Scene Investigation Unit
- Office of Victim-Witness Advocacy.....(908) 575-3359
- Crime Stoppers TIPS Line..... 1-888-577-TIPS (8477)
- Stopit App.....Go to SCPO.net / Resources tab for more information

Located:

40 North Bridge Street
Somerville, NJ 08876

Contact:

Michael H. Robertson, Prosecutor
Phone: (908) 231-7100
Email: ProsecutorsOffice@co.somerset.nj.us

Police Academy Location:

Located in the Somerset County Emergency Services Training Academy (pg 18)
402 Roycefield Road
Hillsborough, NJ 08844
Phone: (908) 541-5037
Website: www.scpo.net

PUBLIC INFORMATION

Responsible for:

- Media relations and publicity for the County Commissioners and county divisions
- Promoting county services and events on social media (Facebook, Twitter, Instagram, etc.)
- Content and updates to county website (www.co.somerset.nj.us)
- Coordinating County Government tents at annual 4-H Fair in August
- Emergency public information, e.g. during severe weather
- County Commissioner e-newsletter (distributed twice monthly via email to subscribers)
- Producing public-service and training videos for county divisions
- Special events, e.g. groundbreaking and ribbon-cutting ceremonies
- Coordinating National County Government Month exhibits & publicity in April
- Coordinating production of annual county Recycling Schedule
- Coordinating production of annual County Directory
- Coordinating displays in County Administration Building Lobby for county divisions
- Wall of Honor – accepting photos of County residents currently serving in the military for display in the Administration Building Lobby, at the 4-H Fair and in the online Wall of Honor (www.co.somerset.nj.us/about/wall-of-honor)
- Free online email subscription service
- Provide information packets to students studying county government
- Overseeing county Graphics Dept. Ext. 7633
- Overseeing county Print Shop Ext. 7267

Located:

Somerset County Administration Building
20 Grove Street (Third Floor)
Somerville, NJ 08876

Contact:

Nathan Rudy, Public Information Director
Phone: (908) 231-7020
Fax: (908) 707-4127
Email: publicinfo@co.somerset.nj.us
Website: www.co.somerset.nj.us
Facebook: www.facebook.com/SomersetCountyNJ
Twitter: www.twitter.com/SomersetCntyNJ
Instagram: www.instagram.com/somersetcountynj

PUBLIC SAFETY RADIO/ 9-1-1 COMMUNICATIONS

Responsible for:

- Answer and process countywide 9-1-1 calls for 20 municipalities
- Dispatch and coordinate appropriate emergency services
- Maintain radio communications infrastructure for Somerset County

Mailing Address:

Somerset County Dept. of Public Health and Safety
P.O. Box 3000
Somerville, NJ 08876

Contact:

David Frauenheim, Director
Phone: (908) 231-7126
Fax: (908) 526-2589

911 Center:

Phone: (908) 526-2500
Fax: (908) 526-2589

Hours:

8:00 a.m. - 4:30 p.m. • Monday - Friday (office)
911 Center operates 24/7 365

PUBLIC WORKS DIVISION

Responsible for:

- Manage the day-to-day Floater staffing in the Public Works Department.
- Handles the authorization of application for Street Closing/ Banner Hanging.
- Manage municipal shred program "Operation Secure Shred".
- Manage scheduling the use of motor pool cars.
- Manage driver's license and insurance data updates.

Located:

Somerset County Administration Building
20 Grove Street (Second Floor)
Somerville, NJ 08876

Contact:

Vivienne Jones, Assistant to the Director of Public Works
Phone: (908) 203-6018
Fax:(908) 231-7170
Email: PublicWorks@co.somerset.nj.us

PURCHASING

Responsible for:

- Coordinating, receiving and maintaining Bids/RFPs for all County Contracts of Goods and Services, as well as Professional Services. **Construction contracts should be referred to the Engineering Division - 908-231-7024.**
- All Bids/RFPs, tabulations, and historical chart of awards are posted on the County Website.
- Award recommendation of contracts to County Commissioners which includes processing resolutions and preparing contracts; providing state/cooperative resolutions; authorizing Extraordinary Unspecifiable Services (EUS) awards.
- Administering centralized purchasing
(Includes verifying quotes, processing requisitions and issuing purchase orders)
- Coordinating on-line auction sales of surplus equipment (publishing list and sale dates).
- Lead Agency for Somerset County Cooperative Pricing System (#2SOCCP)

Located:

Somerset County Administration Building
20 Grove Street (Third Floor)
Somerville, NJ 08876

Contact:

Melissa Kosensky, RPPS, QPA Purchasing Agent
Phone: (908) 231-7053

All questions regarding Bids/RFP's/Exempt Services
Phone: (908) 231-7043
Fax: (908) 575-3917
Email: PurchasingDiv@co.somerset.nj.us

RARITAN VALLEY COMMUNITY COLLEGE

Responsible for:

- Raritan Valley Community College is a two-year institution of higher learning that provides high quality, affordable education for the residents and businesses of Somerset and Hunterdon counties. The College offers more than 90 degree and certificate programs, as well as a wide variety of noncredit professional development and personal enrichment programs. The College also offers customized training for businesses and hosts the Small Business Development Center. RVCC has 1000-seat Theatre that offers professional performances for all ages and a 100-seat Planetarium that presents star shows and provides educational training for teachers.

Located:

Main Campus
118 Lamington Road
Branchburg, NJ 08876

Contact:

The Welcome Center
Phone: (908) 526-1200, Ext. 8400
Website: www.raritanval.edu

RECORDS MANAGEMENT

Responsible for:

- Inventory and Storage of State & County Records to enable easy access
- Retrieval & Return of Records to participating State & County Divisions in an orderly manner
- Disposal of Expired State & County Records under maximum security
 - Maintaining systematic control of records in a secure environment per State Guidelines
 - Destruction of files per State Record Retention Schedule

Located:

Somerset County Court House
20 North Bridge Street
Somerville, NJ 08876
Lower Level

Contact:

Joe Meyers, Director
Phone: (908) 203-6018
Email: RecordsMgmt@co.somerset.nj.us

Hours:

8:00 a.m. - 4:30 p.m. • Monday - Friday

RECYCLING

Responsible for:

- Collecting all residential recycling materials
- Processing of recyclable materials into marketable post-consumer commodities

Located:

Somerset County Recycling Center
40 Polhemus Lane
Bridgewater, NJ 08807

Contact:

John T. Kendzulak, Jr., Superintendent
Phone: (732) 469-3363
Fax: (732) 469-6229
Email: RecyclingDiv@co.somerset.nj.us

Hours:

7:00 a.m. - 3:30 p.m. • Monday - Friday

RICHARD HALL COMMUNITY HEALTH & WELLNESS CENTER

Responsible for:

ACCESS Center is the initial point of entry. Services are provided by a multidisciplinary team to assist individuals in the triage and scheduling of intakes, and evaluations for services.

Outpatient Adult Services offers individual, group and family therapy with specialized programs and recovery support for co-occurring mental health and substance use treatment in the CARE program, treatment for individuals seeking help in ending a cycle of abusive behavior towards their partners (OPTIONS).

Outpatient Child & Family Services offers family, individual and group therapy. Group therapy addresses issues specific to social, emotional and developmental issues.

Traumatic Loss Coalition (TLC) provides crisis management, training and consultation to the schools and provides them with assistance from the Lead Response Team in the event of a sudden and unexpected loss in the school community.

(CHAP) Children's Hope After School Program is a highly individualized and structured after school program that assists middle and high school youth who are: struggling behaviorally and emotionally, have a disturbance in academic and developmental progress and are experiencing conflict within their family and interpersonal relationships.

RICHARD HALL COMMUNITY HEALTH & WELLNESS CENTER

(continued)

Medication Clinic offers assessment and evaluation for pharmacotherapy treatment and ongoing medication monitoring when appropriate for children and adults.

Psychiatric Rehabilitation Services provides (3) extensive services to those adults with serious and persistent mental illness: Intensive Outpatient Program-Touchstone (for those stepping down from partial care level of service), Project Outreach (intensive case management and service linkage to the homeless mentally ill), and Supported Employment (assists individuals with severe mental illness integrate into the competitive workforce).

Assisted Outpatient Treatment Services (AOTS) provides targeted case management and support for those individuals placed on an outpatient commitment status through the courts.

Zufall Healthcare Integration partners with Zufall Health Center to provide coordinated and integrated Primary and Behavioral Health and Dental Care with a focus on whole health interventions.

Located:

500 North Bridge St
Bridgewater, NJ 08807

Contact:

Nicci Spinazzola, Ed.S, LMFT, LPC, ACS, Executive Director
Phone: (908) 725-2800 or toll-free (888) 744-4417
Fax: (908) 725-1394
Email: MentalHealth@co.somerset.nj.us

ROAD DIVISION

Responsible for:

- Construction of county roads
- Maintenance of county roads
- Maintenance of county pump stations
- Mosquito extermination/drainage
- Retention/Detention Pond Maintenance
- Repair of county roads
- Establishing traffic controls and regulations along county road system
- Planning, designing, constructing, operating, and maintaining of county road system traffic control and safety-related devices, e.g., traffic signals, signs, and pavement markings
- Traffic safety improvement programs

Located:

Department of Public Works
South County Facility
410 Roycefield Road
Hillsborough, NJ 08844

Contact:

Vincenzo Russo, Supervisor of Roads & Bridges
Phone: (908) 541-5012
Fax: (908) 526-2450
Email: Roads&Bridges@co.somerset.nj.us

Hours:

7:30 a.m. to 3:30 p.m. • Monday - Friday

RUTGERS COOPERATIVE EXTENSION

Part of the New Jersey Agricultural
Experiment Station

Agricultural & Natural Resources Ext. 7520

Agriculture, Environment, Home Horticulture Information; Natural Resource Management; Rutgers Master Gardeners and Helpline

Family & Community Health Sciences Ext. 7522

Food, Nutrition and Health; School and Early Care Wellness; Worksite Wellness; Food Safety and Food Allergies; Chronic Disease Prevention; and Food Security

4-H Youth Development Ext. 7521

Youth Clubs (grades K-13); Volunteer Development; School Enrichment & Special Interest Programs; Camps; and 4-H Fair. Focus areas include Science, Engineering & Technology, Citizenship, and Healthy Living

Located:

Ted Blum 4-H Center
310 Milltown Road
Bridgewater, NJ 08807

Contacts:

Daryl L. Minch, Division Head and Family
& Community Health Sciences Educator
Phone: (908) 526-6295 x2

Carol K. Ward, County 4-H Agent
Phone: (908) 526-6644 x1

Lisa Rothenburger, County 4-H Agent
Phone: (908) 526-6644 x1

Nicholas Polanin, County Agent
Phone: (908) 526-6293 x4

Website:<http://somenset.njaes.rutgers.edu>

Hours:

8:00 a.m. - 4:30 p.m. • Monday - Friday

SHERIFF

Responsible for:

- Adopt a Road Program
- American Flag Collection
- Boy Scout Explorer Group
- Bureau of Criminal Identification
- Certified Criminal Composite Artist
- Child Support Enforcement
- Click It or Ticket
- Commitment hearings
- County Jail
- Drug Interdiction Program
- DUI Enforcement
- First Aid Program
- Hate Crimes Awareness & Prevention Unit
- Hero Campaign
- Honor Guard
- Inmate Weekend Work Detail
- JSMART - **J**udiciary **S**ecurity **M**anagement **R**esponse **T**eam
- Medicine Collection Program
- Prisoner Transport for Local Police Departments
- Project LifeSaver
- Protect the lives and property of the citizens of Somerset County
- SAMS - **S**uspicious **A**ctivity **M**onitoring **S**ystem
- School Resource Officer
- Security for Juvenile and Adult Probation Office
- Security for Somerville Motor Vehicle Commission
- Security for the county complex and the courthouse 24 hours a day 7-days a week
- Senior Safety Awareness Program
- Service of criminal and civil process
- Sheriff's Foreclosure Sales
- Sheriff's Gang and Terrorism Unit
- Sheriff's Investigation Bureau
- Sheriff's K-9 Unit (Narcotic, Explosive, Human Scent, and Arson Detection Canines)

SHERIFF

(continued)

- Sheriff's Special Response Team/OEM
- Threat Assessment-Active Shooter Training
- Transportation of inmate and juveniles for courts and various facilities

Support Programs:

- 4H Fair
- Child Identification in Schools
- Special Olympics
- Unity Tour
- Toys For Tots
- Gun Locks

Located:

Somerset County Administration Building
20 Grove Street (Lower Level)
Somerville, NJ 08876

Contact:

Sheriff Darrin J. Russo
Phone: (908) 231-7140
Fax: (908) 526-2558
Email: SheriffsOffice@co.somerset.nj.us

SOCIAL SERVICES BOARD

Responsible for:

- Adult Protective Services
- Boarding Home, Rooming House, and services to residents in Residential Health Care facilities
- Child Support and Paternity Services
- Counseling
- Home Health Aide Services
- Homelessness Prevention and Emergency Assistance
- Jersey Care Medicaid special programs
- Medicaid: community and long-term care
- NJ Family Care Medicaid Program
- Refugee Resettlement Program
- SNAP (Formerly the Food Stamps Program)
- Work First New Jersey: Temporary Assistance to Needy Families (TANF) and General Assistance including education and employment services
- 24-Hour Homeless and Adult Protective Services Hotline (1-800-287-3607)

Located:

73 East High Street,
PO Box 936, Somerville, NJ 08876

630 Franklin Blvd., Suite 110
PO Box 1144, Somerset, NJ 08873

391-D Somerset Street
North Plainfield, NJ 07060

Contact:

Dominic Crisall, Director
Phone: (908) 526-8800
Fax: (908) 707-1941
Email: SocialServices@co.somerset.nj.us

SOIL CONSERVATION

Responsible for:

- Natural resource conservation and management information
- Technical assistance to engineers regarding erosion control plans
- Technical assistance to landowners regarding soil erosion and drainage issues

Located:

Somerset County 4-H Center
308 Milltown Road
Bridgewater, NJ 08807

Contact:

Matthew D'Alessandro, District Manager
Phone: (908) 526-2701
Fax: (908) 575-3977
Email: SoilConservation@co.somerset.nj.us

SOLID WASTE MANAGEMENT

Responsible for:

- County's Clean Communities Program (Adopt-A-Road)
- Household Hazardous Waste Disposal Program
- Planning, implementation, and monitoring of solid waste disposal methods for the county
- Recycling: Marketing of residential materials collected, educational outreach, and source reduction programs (composting)

Located:

Somerset County Administration Building
20 Grove Street (Second Floor)
Somerville, NJ 08876

Contact:

Melissa Harvey, Manager
Phone: (908) 231-7109
Info Line: (908) 231-7031
Fax: (908) 707-1749
Email: SolidWaste@co.somerset.nj.us

EXECUTIVE COUNTY SUPERINTENDENT OF SCHOOLS

Responsible for:

- Supporting the N.J. Department of Education in providing high quality educational services to all school districts and pupils in Somerset County
- Review of school budgets, state reports and grants, evaluation of districts, and regulatory oversight and technical assistance when needed
- Provide countywide staff development and assistance to school districts
- Exercises general supervision of instruction at all levels of education in the county
- Disseminates and interprets school-related information to local school districts on a daily basis
- Meets with district superintendents and school business officials for a mid-year review
- Maintains on-going communication with local school districts, publicly-funded charter schools, and approved private schools for student with disabilities
- Represents the Commissioner of Education in Somerset County
- Provides services to local school districts and administrative staff exerting a broad base for leadership toward better education
- Processes substitute teacher applications and issues substitute teaching credentials. Assists school districts and members of the public in completing applications for teacher certification
- Inspect school buildings for compliance with Federal and State statutes and Administrative Code
- Approves transportation contracts

**EXECUTIVE COUNTY
SUPERINTENDENT OF SCHOOLS**

(continued)

Located:

27 Warren Street (Fourth Floor)
Somerville, NJ 08876-1262

Mailing Address:

P.O. Box 3000
Somerville, NJ 08876-1262

Contact:

Roger Jinks, Interim Executive County Superintendent of Schools
Phone: (908) 541-5700
Fax: (908) 722-6902
Email: schools@co.somerset.nj.us or somerset@doe.nj.us

SURROGATE

Responsible for:

- Qualifies executors and Trustees named in wills
- Appoint Administrators for those who die without a will
- Issues necessary documents for administration of the estate of the deceased
- Appoints guardians for minors and legally incapacitated adults
- Oversees contested estate matters
- Handles adoptions of minors and adults
- As co-guardian of minors' estates, overseeing assets and expenditures until the minor reached the age of majority, (18).
- Act as deputy of Superior Court in all matters arising in the Chancery Division, Probate Part
- Custodian of records of all wills, estate administration papers, guardianships and adoptions

Located:

Somerset County Administration Building
20 Grove Street (First Floor)
Somerville, NJ 08876

Contact:

Bernice Martina Jalloh, Surrogate
Phone: (908) 231-7003
Fax: (908) 575-3965
Email: SurrogatesOffice@co.somerset.nj.us

TAX BOARD

Responsible for:

- Construction of the Table of Equalized Values and the annual Abstract of Ratables, computation of annual tax rates for all municipalities
- Hearing assessment appeals filed by taxpayers and municipalities
- Maintaining all county records on property assessments
- Ordering revaluations and reassessments where needed
- Supervising municipal tax assessors; review, revision and correction of all assessments

Located:

27 Warren Street (Fourth Floor)
P.O. Box 3000
Somerville, NJ 08876-1262

Contact:

Robert M. Vance, Tax Administrator
Phone: (908) 541-5701
Fax: (908) 685-0956
Email: TaxBd@co.somerset.nj.us

TELEPHONE SERVICES

Responsible for:

- Maintaining the County switchboard
- Scheduling conference rooms in the Administration Building and 40 North Bridge Street
- Setting up telephone services for county and court departments, divisions and agencies
- Directing the public to the proper office within the county complex
- Notary services

Located:

Somerset County Administration Building
20 Grove Street (First Floor)
Somerville, NJ 08876

Contact:

Angela Perkins, Supervisor
Phone: (908) 231-7000
Email: TelephoneServ@co.somerset.nj.us

TRANSPORTATION DIVISION

Responsible for:

- Transportation services to senior citizens and persons with disabilities
- Transportation to rural areas of Somerset County
- Transportation to the general public along designated routes

Located:

Somerset County Central Maintenance Facility
750 East Main Street
Bridgewater, NJ 08807

Contact:

John Adair, Transportation Director
Phone: (908) 231-7116 or toll-free: (800) 246-0527
Fax: (732) 805-0517
Email: TransportationDiv@co.somerset.nj.us

CAT (Community Access Transit), DASH (Davidson Avenue Shuttle) and SCOOT - Please refer calls to RideWise of Raritan Valley - (908) 704-1011

VEHICLE MAINTENANCE

Responsible for:

- Provide Somerset County and its Co-op members with safe and dependable vehicles, equipment and service facilities.
- Responsible for the maintenance and operation of (4) fueling stations which include: gas, diesel, and propane.

Located:

Somerset County Vehicle and Equipment Maintenance Facility
750 East Main Street
Bridgewater, NJ 08807

Contact:

John Kendzulak, Supervisor of Vehicle Maintenance
Phone: (908) 231-7019
Fax: (732) 302-1575
Email: Vehicle_Maint@co.somerset.nj.us

Hours:

7:00 a.m. - 3:30 p.m. • Monday - Friday

VETERANS SERVICES

Responsible for:

- Burial Benefits
- Dependency and Indemnity Compensation
- Non Service Connected Pensions
- GI Bill
- Employment
- VA Insurance
- VA Home Loans
- NJ VA Health Care System
- Vocational Rehabilitation
- VA Disability Compensation

Located:

27 Warren Street (First Floor)
Somerville, NJ 08876

Contact:

Peter Niemiec, Director
Phone: (908) 704-6329
Email: VeteranServices@co.somerset.nj.us

VOCATIONAL/TECHNICAL SCHOOLS

Responsible for:

- High School offering career and technical programs for full-time or shared-time county students in grades 9-12

Located:

Somerset County Vocational and Technical Schools
14 Vogt Drive
Bridgewater, NJ 08807-0350

Contact:

Chrys Harttraft, Ed.D., Superintendent
Phone: (908) 526-8900, Ext. 7212
Fax: (908) 704-0784
Website: www.scvths.org

High School Guidance:

Phone: (908) 526-8900, Ext. 7243

VOLUNTEER SERVICES, OFFICE OF

Responsible for:

- Recruiting people of all ages to volunteer to assist various county departments
- Assisting anyone interested in volunteering in general, non-profit organizations etc.
- Assisting county departments and non-profit organizations with projects, bulk mailings etc.

Manages the:

- Retired & Senior Volunteer Program (RSVP)
- The Handyman Program
- Tutoring Program for Elementary/High School Students
- Tax Counseling Program
- Phone Alert Program
- Operation Freedom
- Money Management Program
- Fall Leaf Clean Up Program

Located:

27 Warren Street (First Floor)
Somerville, NJ 08876

Contact:

Bill Crosby, Coordinator
Phone: (908) 704-6358

Rita Donald, RSVP Coordinator
Phone: (908) 704-6338

Email: VolunteerSvs@co.somerset.nj.us

WEIGHTS AND MEASURES

Responsible for:

- Ensuring equity in the marketplace
- Inspecting and certifying all commercial weighing, measuring and timing devices within the county
- Performing random commodity audits for items sold by weight or measure
- Educating businesses and consumers on Weights and Measures related regulations
- Investigating consumer complaints of alleged fraudulent business practices

Located:

Somerset County Administration Building
20 Grove Street (Second Floor)
Somerville, NJ 08876

Contact:

Jeremy Eckles, Superintendent
Phone: (908) 231-7125
Fax: (908) 429-0670
Email: Weights&Measures@co.somerset.nj.us

YOUTH SERVICES, OFFICE OF

Responsible for:

- Family Crisis Intervention Unit (FCIU)(908) 704-6330

Business Hours:

8:30 am - 8:00 pm • Monday - Thursday

8:30 am - 4:30 pm • Friday

After hours:(908) 526-4100

- Planning and Programs(908) 704-6333
 - Youth Services Commission
 - Municipal Youth Services Commissions
 - Commission on Child Abuse and Missing Children
 - County Coordinating Intra-Agency Council
 - Juvenile Detention Alternatives Initiative
 - Juvenile Justice Multi-Disciplinary Team

Located:

27 Warren Street (Second Floor)

Somerville, NJ 08876-1262

Contact:

Linda M. Porcaro, Administrator

Phone: (908) 704-6313

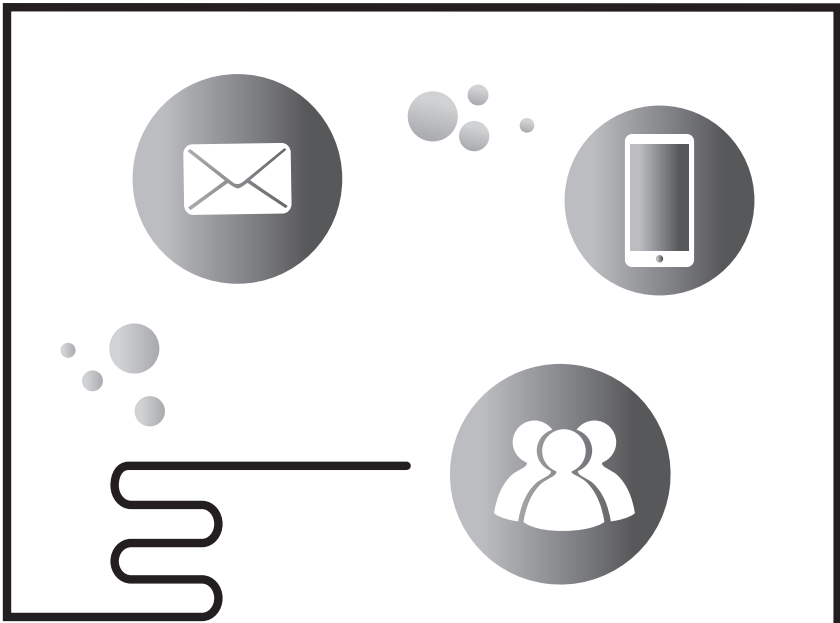
Fax: (908) 253-0180

Email: Youth@co.somerset.nj

Notary Public

<u>Division</u>	<u>Name</u>
Administrator	Linny Kosensky Bonnie Lacamera
Aging & Disability Services	Helen O'Connor
Clerk of the Board	Kelly Mager Tonya Jenkins Andrea Clegg
County Clerk	Christine Heckman Sarita Williams Jessica DeLucia Veronica Goncalves Terry Hajdu-Nemeth Stephanie Moriarty Xiomara Piercey
Engineering	Melanie Kowal
Human Resources	Lori Call
Jail	Frank Apisa Connie Fisher Edward Reese
Office of Operations & Planning	Tammy Wise
Planning	Natalie Zaman
Prosecutor	Irene Doyle Tom White
Public Works	Vivienne Jones
Purchasing	Melissa Kosensky Janice Artfitch Janet Elbert
Recycling	Melania Tchir
Roads	LeighAnn Sullivan
RSVP	Bill Crosby Rita Donald
Rutgers Co-Op	Julie Polyak Marilyn Cubano

Sheriff	Lisa Bron Capt. Ret. Glenn Dickey Mike Diguilio Sue Katyan Undersheriff Joseph Lombardo Michelle Royer
Tax Board	Dawn Guttschall
Telephone Services	Angela Perkins Maryann Murphy
Youth Services	Nancy Newton



**Somerset County
- Mission Statement -**

The County of Somerset is committed to excellence and innovation in public service, promoting the well-being of all residents and communities by providing effective, efficient and responsive leadership.

**Prepared by the
Office of The Administrator
& the Graphics Department**

