

SOMERSET COUNTY ROADWAY SAFETY STUDY



Public Meeting #2
September 29, 2021



Zoom Meeting Interface

Zoom Instructions

Make sure name you registered with is displayed here. If not, click "Rename" to update.

Participants (1)

- FHI Plan(Host, Me) [Mute] [Rename] [More]

Meeting Controls: Mute, Start Video, Security, Manage Participants, Share Screen, Chat, Record, More, End

Feedback Options: yes, no, go slower, go faster, more, clear all

Additional Controls: Invite, Mute All, More



The image shows a Zoom meeting interface. A large green callout box on the left contains the text: "Use the bottom panel to mute/unmute, share video, and open the chat window". Below this box, a green arrow points to a green-bordered toolbar at the bottom of the screen. The toolbar includes icons for Mute, Start Video, Security, Manage Participants, Share Screen, Chat, Record, and More. To the right of the toolbar is a red "End" button. In the top right corner, there is a "Participants (1)" panel showing "FHI Plan(Host, Me)" with "Mute", "Rename", and "More" buttons. Below the participants panel is a row of reaction buttons: "yes", "no", "go slower", "go faster", "more", and "clear all". At the bottom of the participants panel are "Invite", "Mute All", and "More" buttons.



Agenda

- Introductions
- Project Background
- Project Status
- Identification of Needs & Public Involvement Plan
- Study Safety Measures
- RSA Observations by Corridor
- Proposed Safety Measures by Corridor
- Breakout Sessions
- Next Steps

~45 minutes

~45 minutes

~5 minutes



Introductions: County & NJTPA

Sara Sooy – Deputy Director of Board of County Commissioners

Walter Lane – Project Director

Ken Wedeen – Co-Project Manager

Adam Bradford – Co-Project Manager

County Engineering – Alicia Meyers & Adam Slutsky

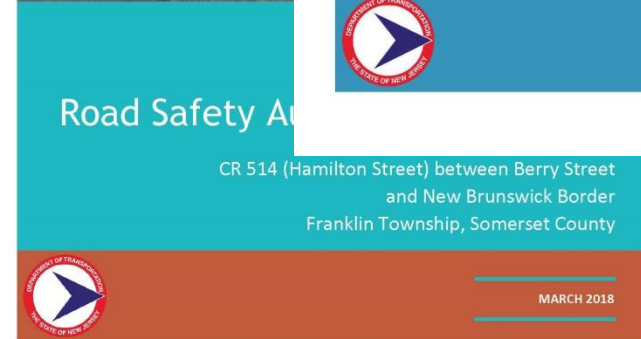
NJTPA – Keith Hamas

Consultant Team – Stantec & FHI



Project Background

- County initiative for traffic safety
- Success with past road safety audits
- Looking to conduct five (5) RSAs on different County roads
- Recommendations from RSAs to inform future...
 - Studies
 - Improvements
 - Applications for funding



Project Status

- Summer 2020 – Select Corridors to Perform Road Safety Audits
- Fall 2020 / Winter 2021 – Collect Crash Data and Conduct Safety Analysis
- Spring 2021 – Conduct Road Safety Audits
- Summer 2021 – Production of RSA Reports

Two Public Meetings:

1

November 2020

Obtain feedback on safety concerns at
corridor locations

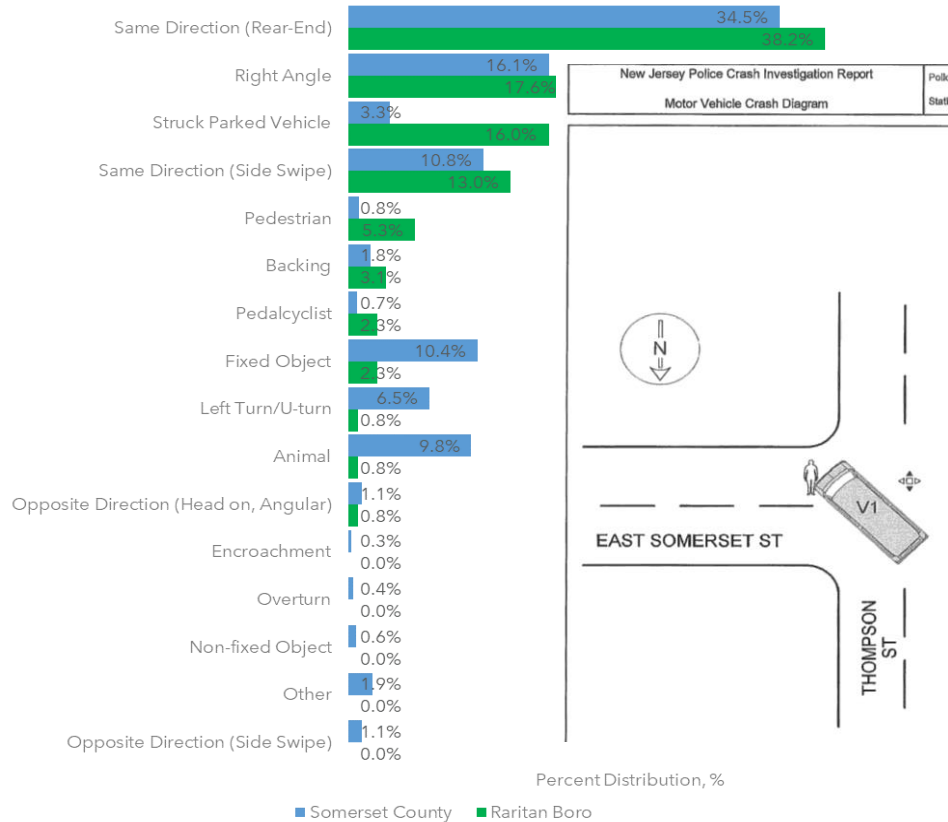
2

Today

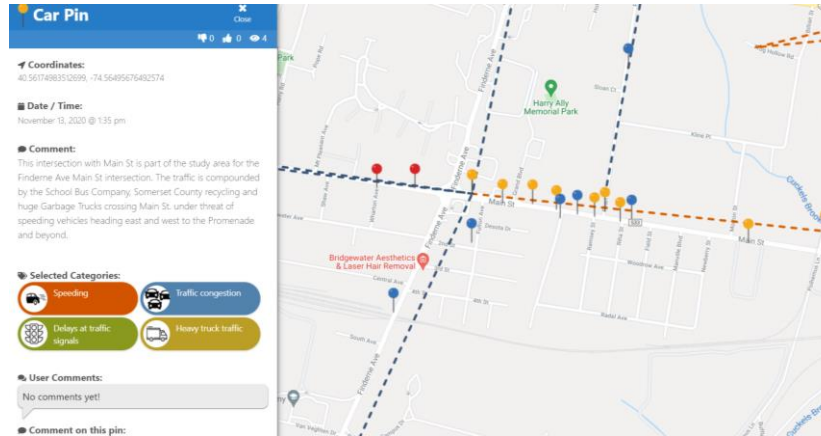
Share study recommendations from
RSAs



How did we identify safety needs?



Public / TAC Meetings



Virtual Mapping Tool



Road Safety Audits

NJDOT Crash Data and PD Reports

Best Practice Guidance Books / Prior County Studies



Public Involvement Plan Elements

Virtual Outreach

Technical
Advisory
Committee

Project Email

Project Website

Public Meetings

Stakeholder
Meetings

Press Releases

Equity Analysis



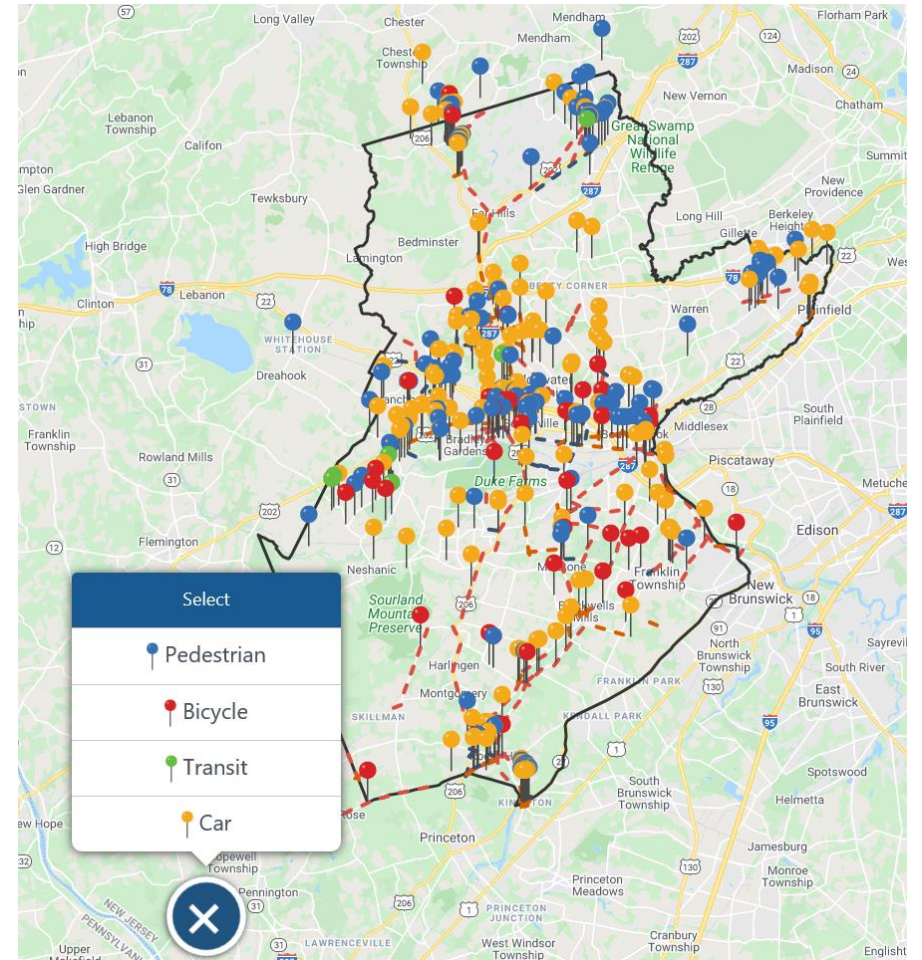
Virtual Outreach Summary

- Public meetings, now and Fall 2020
- Project website (co.somerset.nj.us/government/public-works/planning)
- Project email (SCroadwaysafetystudy@co.somerset.nj.us)
- Technical Advisory Committee: Aug '20, Feb '21, and Aug '21
- Virtual mapping activity (<http://fhiplansurvey.com/somerset/>)



Virtual Outreach Feedback

- Project Email
 - Comments accepted throughout study
- Virtual Mapping Tool
 - Members of public can identify transportation areas of concern throughout Somerset County
- Over 800 comments received with online mapping tool
- Central part of the county receiving most attention



FHWA Proven Safety Measures

ROADWAY DEPARTURE.....



1. Enhanced Delineation and Friction for Horizontal Curves



2. Longitudinal Rumble Strips and Stripes



3. SafetyEdge_{sm}



4. Roadside Design Improvements at Curves



5. Median Barriers

INTERSECTIONS.....



6. Backplates with Retroreflective Borders



7. Corridor Access Management



8. Left- and Right-Turn Lanes at Two-Way Stop-Controlled Intersections



9. Reduced Left-Turn Conflict Intersections



10. Roundabouts



11. Systemic Application of Multiple Low-Cost Countermeasures at Stop-Controlled Intersections



12. Yellow Change Intervals

PEDESTRIANS/BICYCLES.....



13. Leading Pedestrian Intervals



14. Medians and Pedestrian Crossing Islands in Urban and Suburban Areas



15. Pedestrian Hybrid Beacons

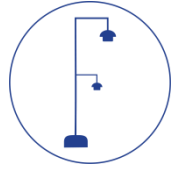


16. Road Diets/Reconfigurations

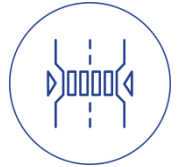


17. Walkways

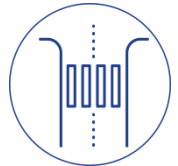
Safety Measures Proposed for Corridors



Lighting



Curb Extensions/ Bus Bulbs



Daylighting Crosswalks



Walkways for Sidewalk Gaps



Dedicated Turn Lanes



Leading Pedestrian Intervals (LPI)



High Visibility Crosswalks



Turn Restrictions



Bike Lanes



Lane Width Reduction/Road Diet

About Improvements Discussed Today

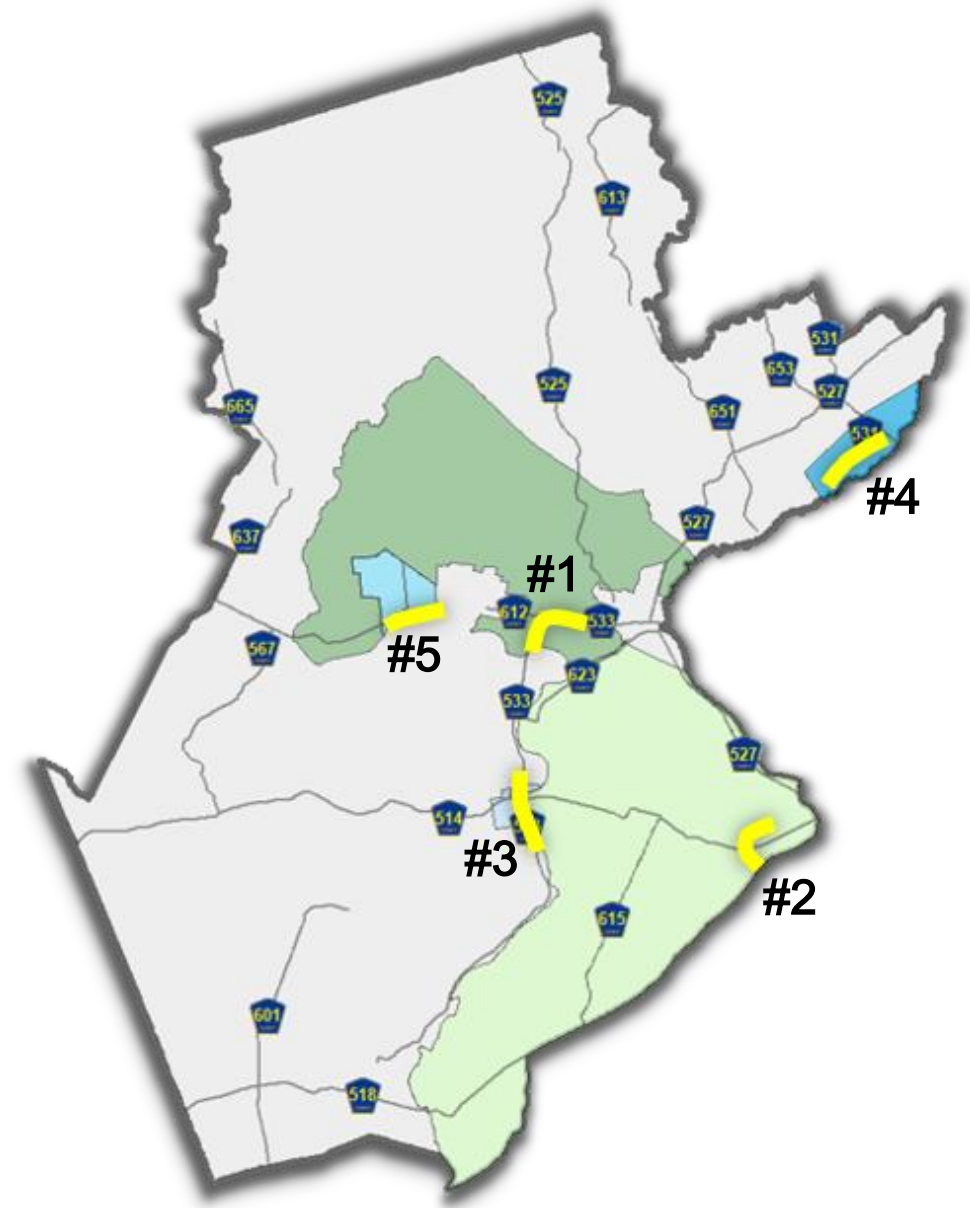
- Must be evaluated by County Engineering for feasibility/practicability
- Must follow applicable codes, standards, and best practices
- Must be fully studied and vetted before all stakeholders

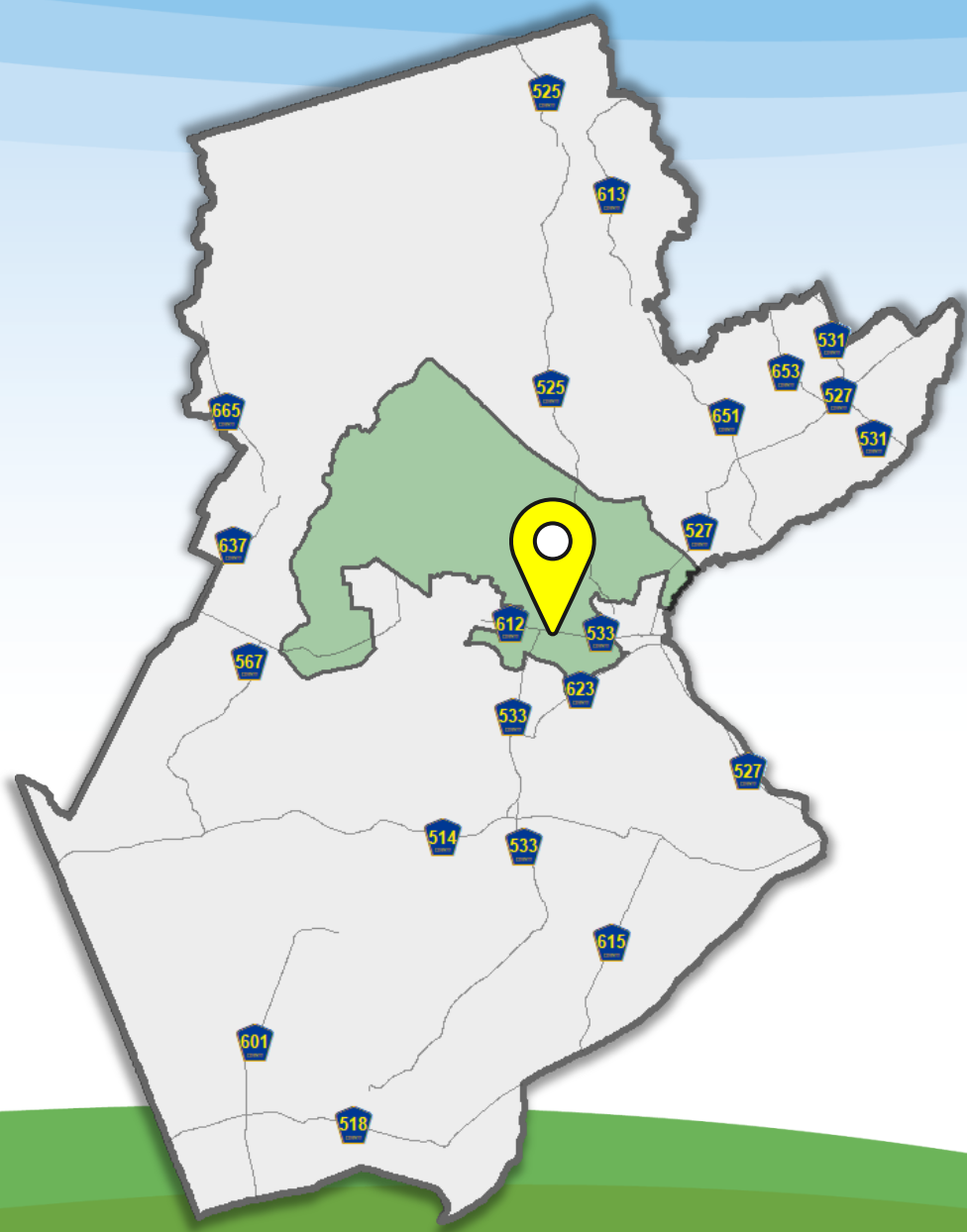
Some recommendations may require further evaluation



Corridors Selected for RSA

1. FINDERNE AVENUE/MAIN STREET (CR 533) in **BRIDGEWATER TOWNSHIP**
2. FRANKLIN BOULEVARD (CR 617) in **FRANKLIN TOWNSHIP**
3. MAIN STREET (CR 533) in **MILLSTONE BOROUGH**
4. GREENBROOK ROAD (CR 636) in **NORTH PLAINFIELD BOROUGH**
5. SOMERSET STREET (CR 626) in **RARITAN BOROUGH**





Bridgewater Township

- FINDERNE AVENUE/MAIN STREET
- SOUTH STREET TO CHIMNEY ROCK ROAD
- 1.00 MI IN BRIDGEWATER TOWNSHIP



Finderne Avenue/Main Street

South Street to
Chimney Rock Road

1.00 mi in Bridgewater Township

- Close calls between NB permissive left and SB through at Finderne & Main
- Sidewalk on the north side of Main Street has interrupted curb cuts and parked vehicles
- Cycling on Finderne Avenue restricted to narrow multiuse path over bridge
- Cycle route lacking updated wayfinding to connect local communities

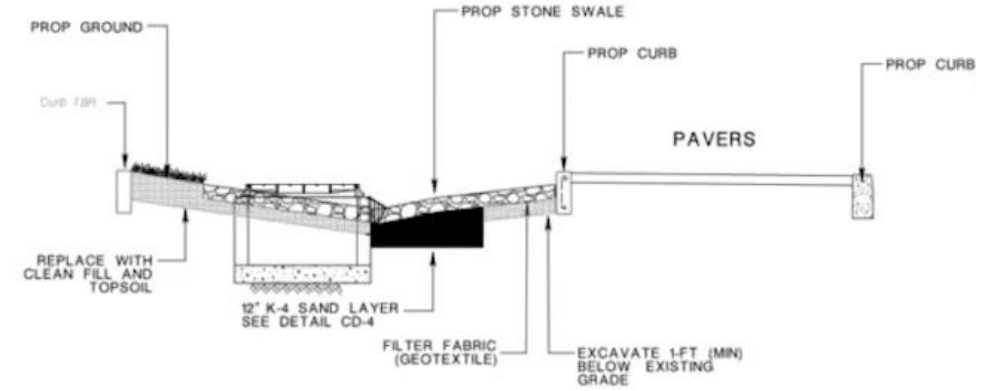




Finderne Avenue/Main Street Recommendations



Protected-only Phasing at Main & Finderne



Biofilter at Main & Finderne



Signing / Striping Multiuse Path on Finderne



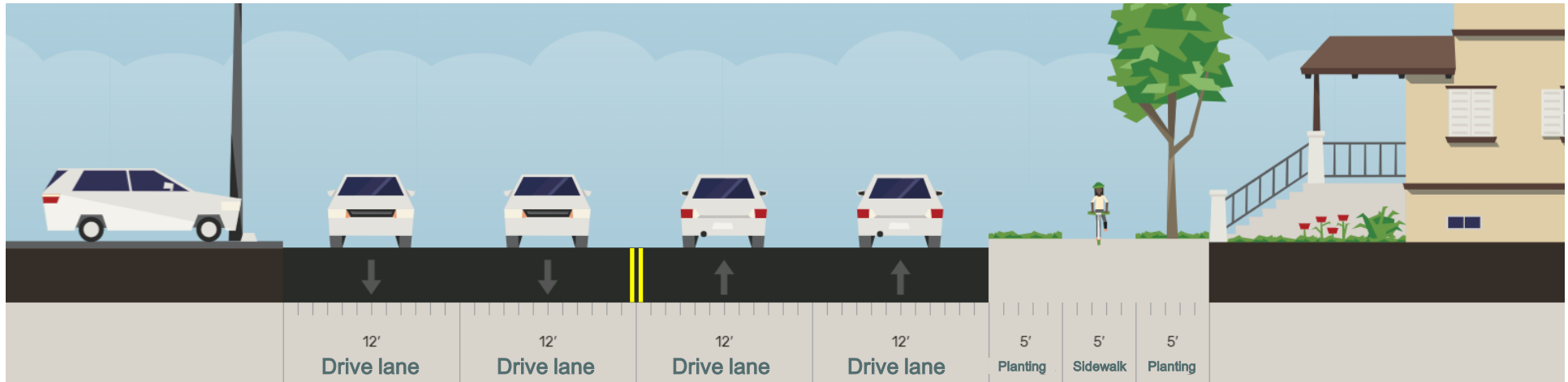
Speed Humps on Fulton Avenue



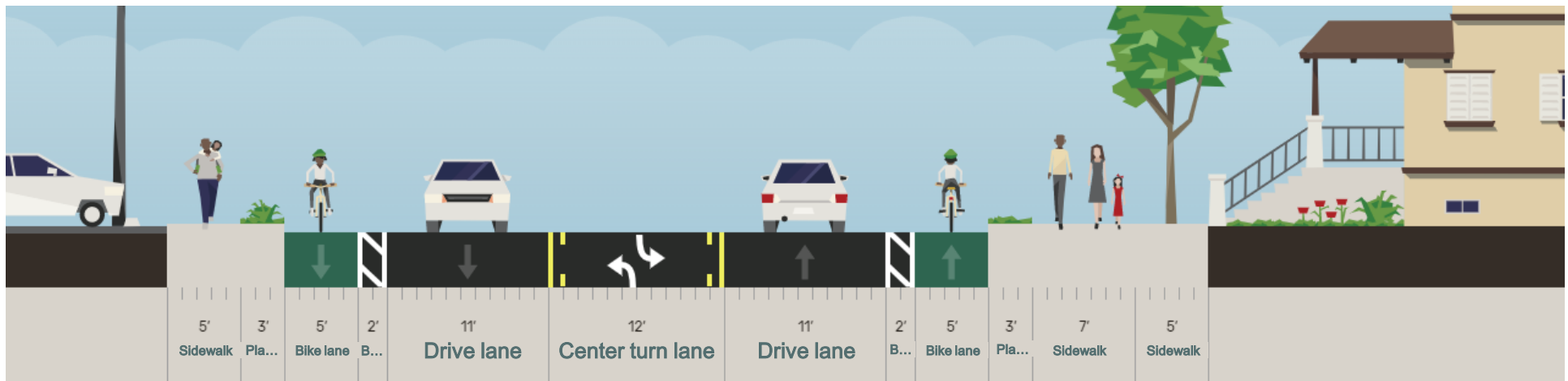


Finderne Avenue/Main Street Recommendations – Road Diet

Suggested Road Diet Option - Cross Section View

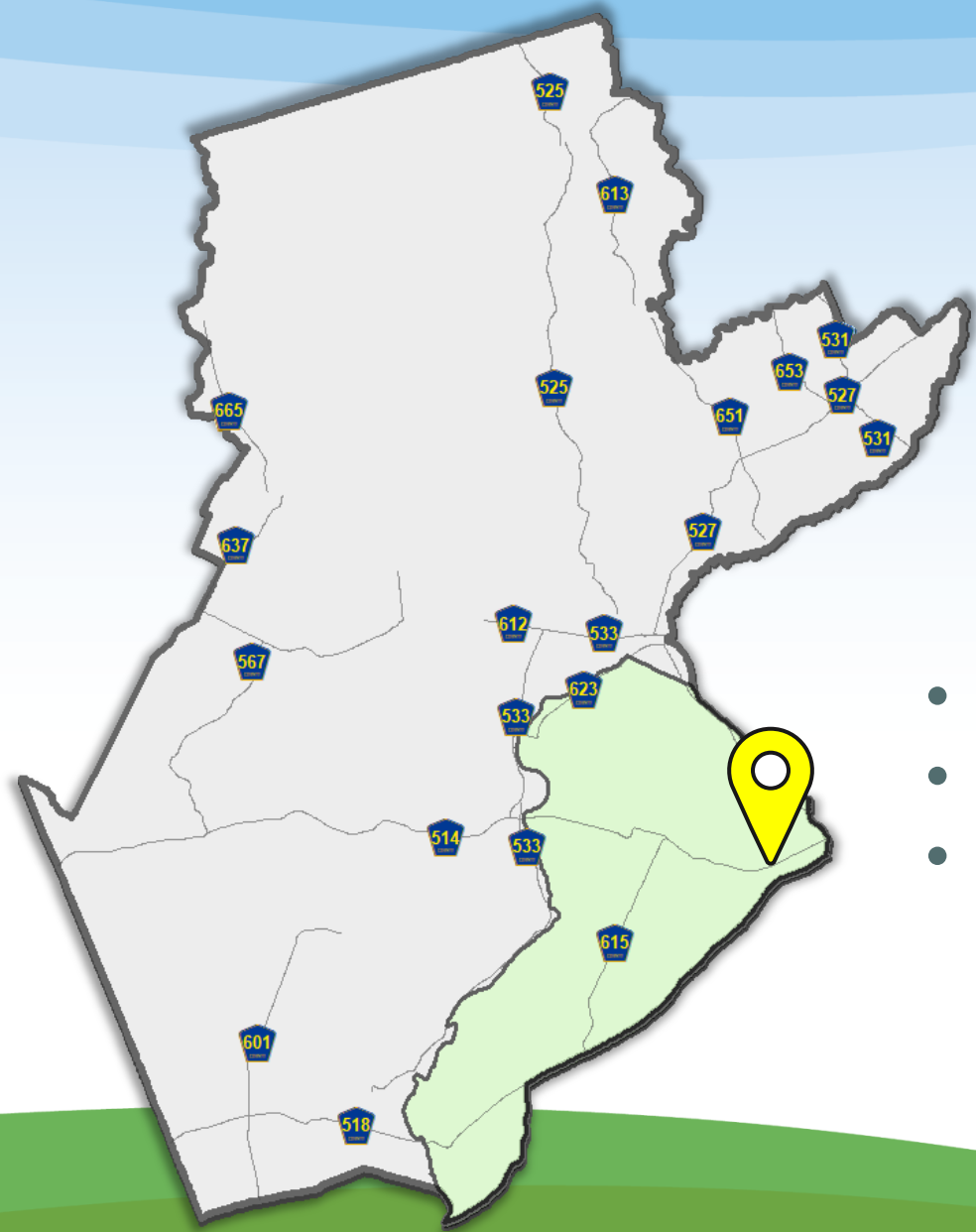


Existing Cross-Section of Main Street, West of Ramsey Street



Cross-Section of Main Street After Road Diet, West of Ramsey Street





Franklin Township

- Franklin Boulevard
- Route 27 to Belmar Street
- 1.00 mile in Franklin Township



Franklin Boulevard

Route 27 to Belmar Street

1.00 mile in Franklin Township

- School signing to be upgraded; bike lane not adequately striped
- Gap in sidewalk connectivity between Fuller Street and Somerset Street
- Heavy vehicles encroaching onto Somerset Street left turn lane onto Franklin Boulevard
- Sidewalk interrupted by wide curb cuts and vehicles encroaching on pedestrian paths





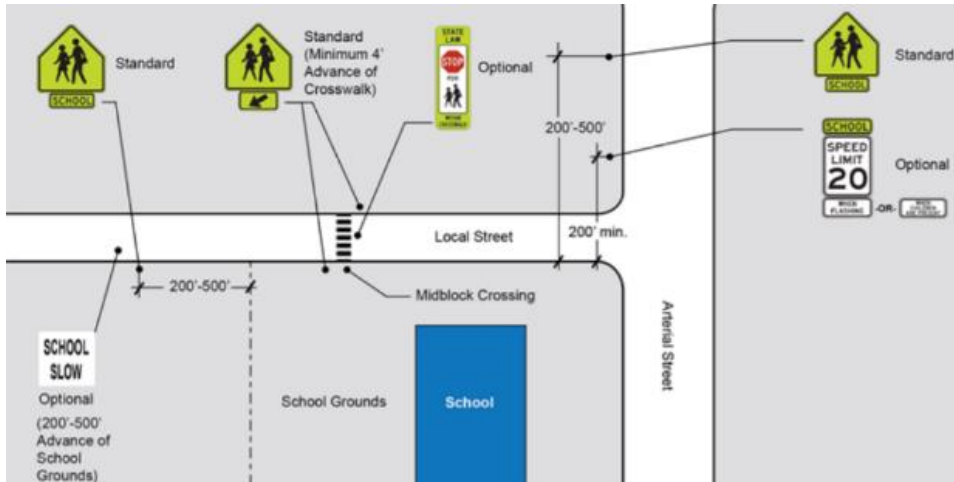
Franklin Boulevard Recommendations



Mountable Curbs at Route 27 and Hamilton Street Intersections



Buffer Strip to Improve Existing Bike Lane



Additional School Signing & Striping



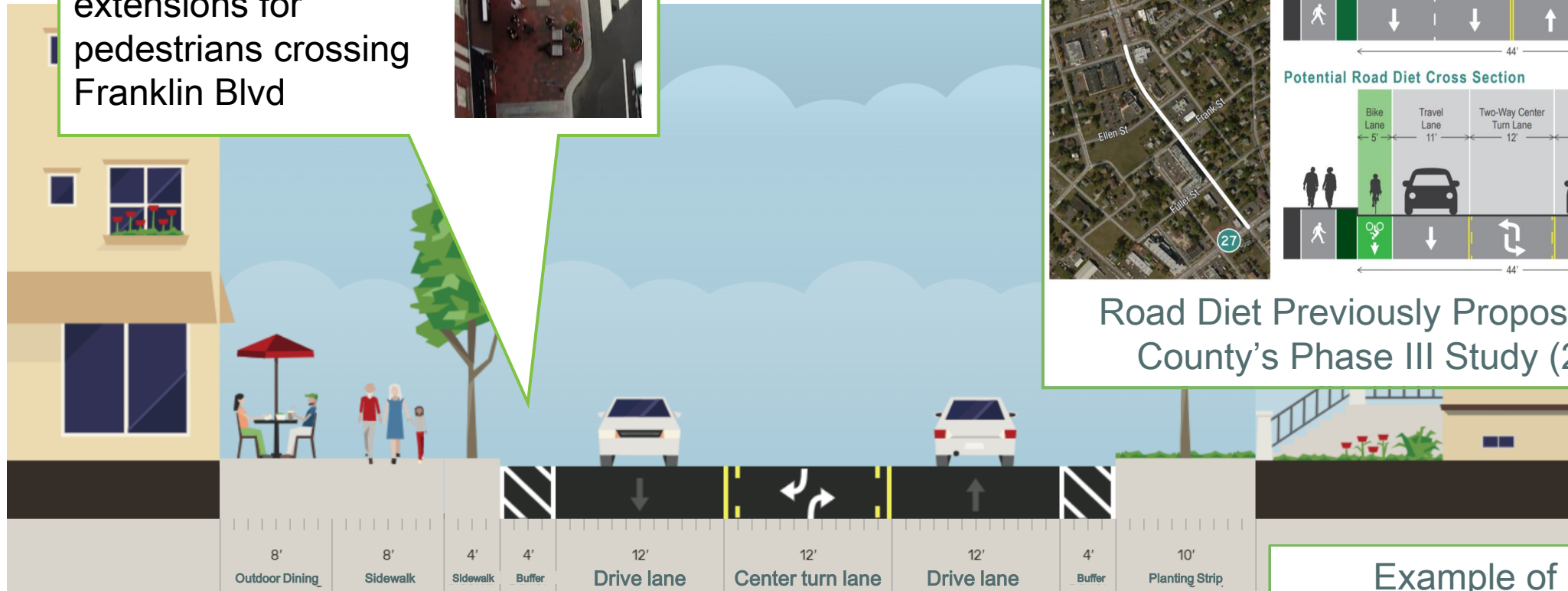
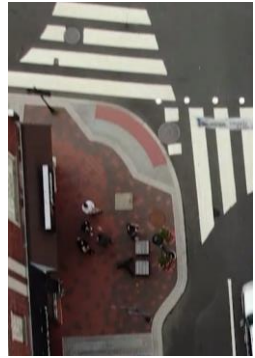
Biking-Bus Activity to Incentivize Bike Travel





Franklin Boulevard Recommendations – Road Diet

Curb extensions at intersections to provide curb extensions for pedestrians crossing Franklin Blvd



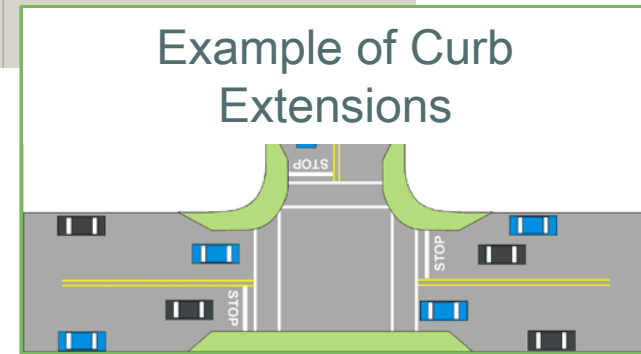
Alternate Road Diet Option without Bike Lane, Facing North between Frank Street and Fuller Street

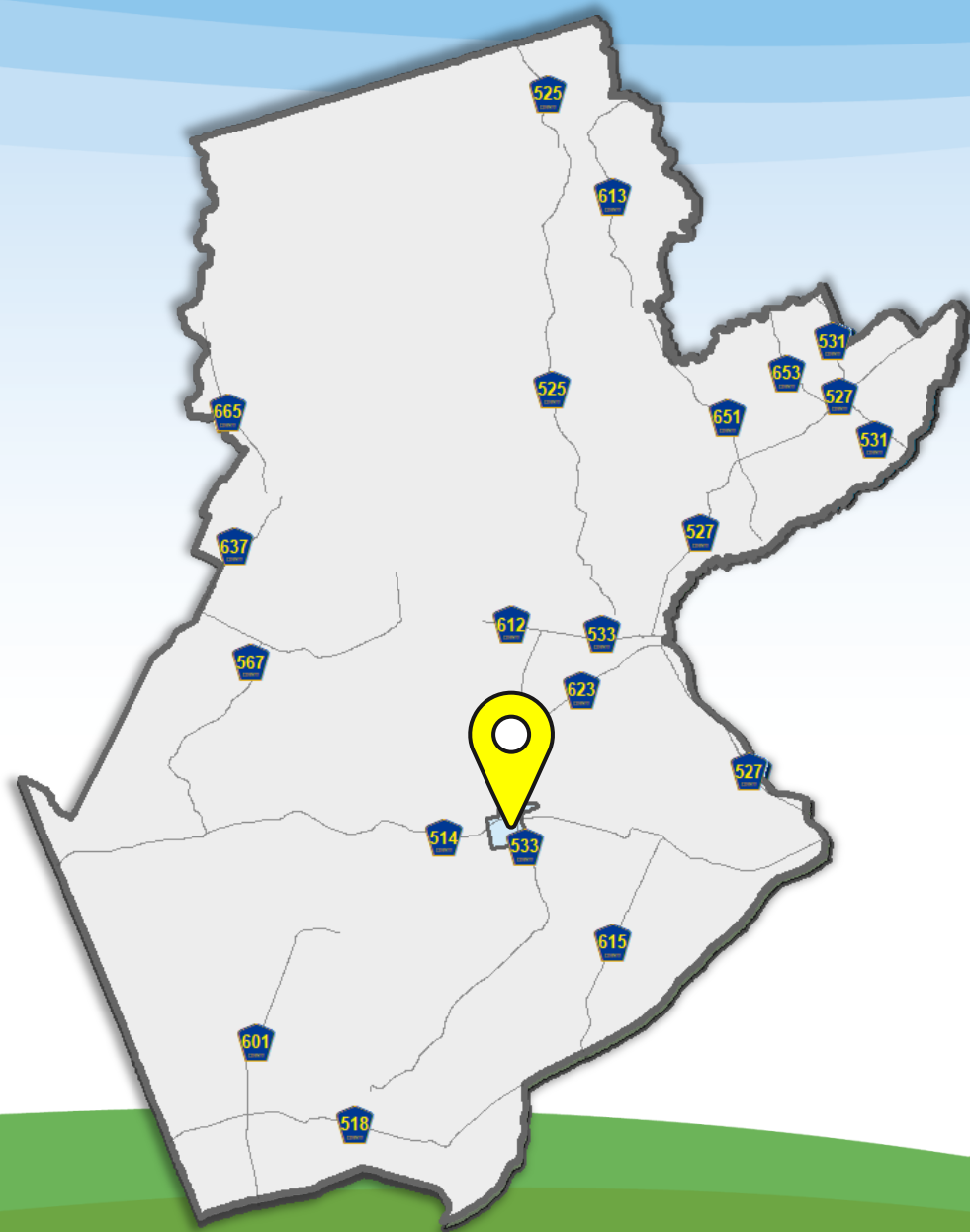
Proposed Road Diet Extent

Existing Cross Section

Potential Road Diet Cross Section

Road Diet Previously Proposed from County's Phase III Study (2017)





Millstone Borough

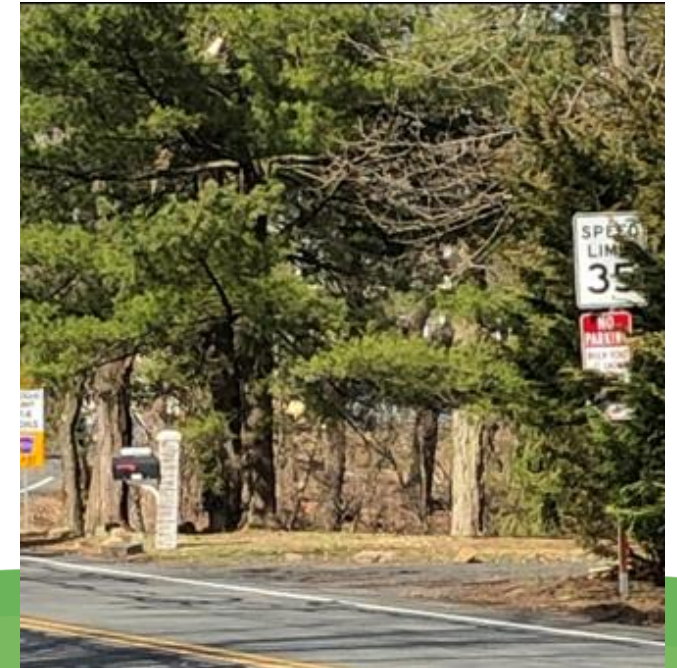
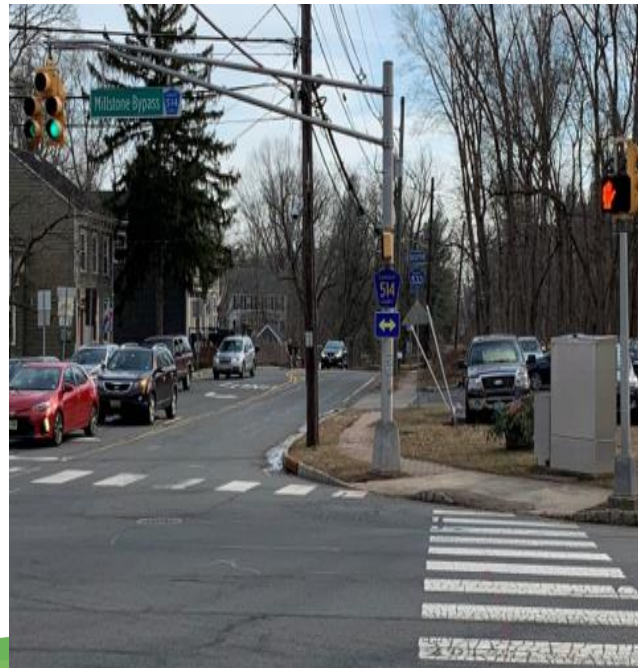
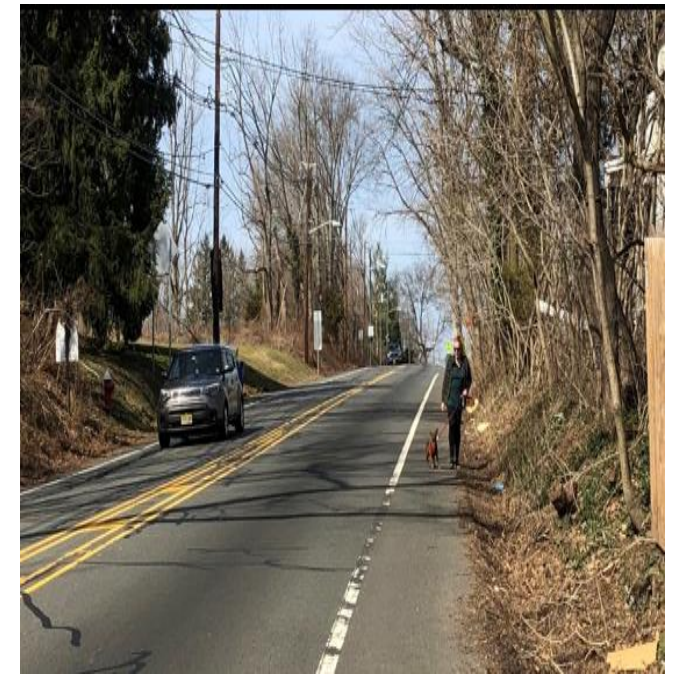
- Main Street
- Yorktown Road to Beardslee Road
- 0.67 miles in Millstone Borough



Main Street

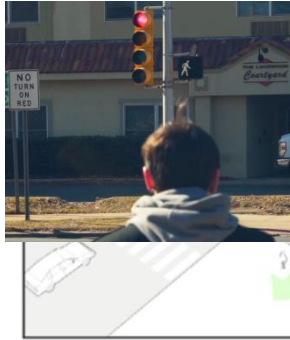
Yorktown Road to Beardslee Road
0.67 miles in Millstone Borough

- Brick paver sidewalks need to be reset and repaired along corridor
- Gaps in pedestrian connectivity and pavement drop-offs on side of road
- Signal at Amwell & Main lacks pedestrian countdown signal heads
- Branches obstructing signing along Main Street



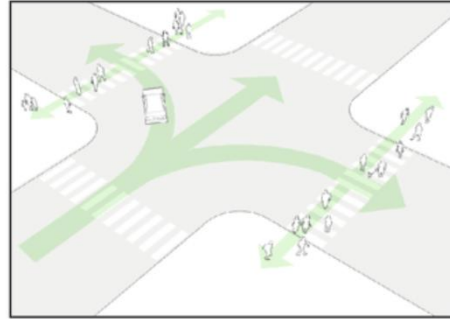
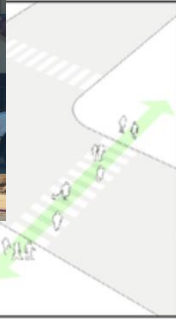


Main Street Recommendations



PHASE 1

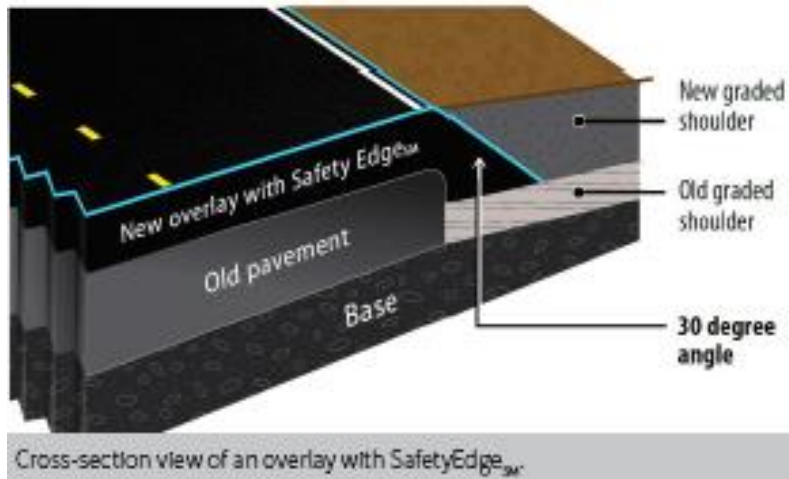
Pedestrians are given a minimum head start of 3–7 seconds when entering the intersection.



PHASE 2

Through and turning traffic are given the green light. Turning traffic yields to pedestrians already in the crosswalk.

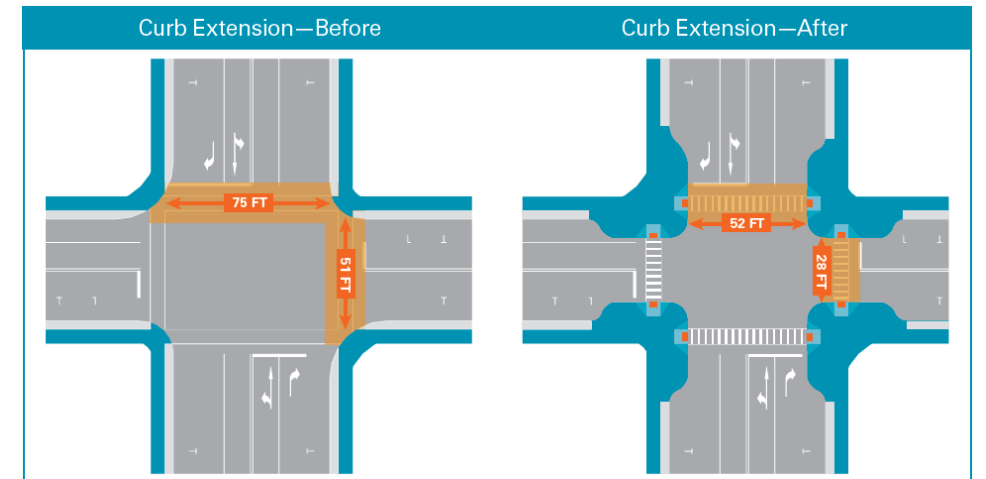
Leading Pedestrian Intervals at Amwell Road (CR 514)



SafetyEdge at Pavement Dropoff Areas



Wayfinding to Historic Borough Sites



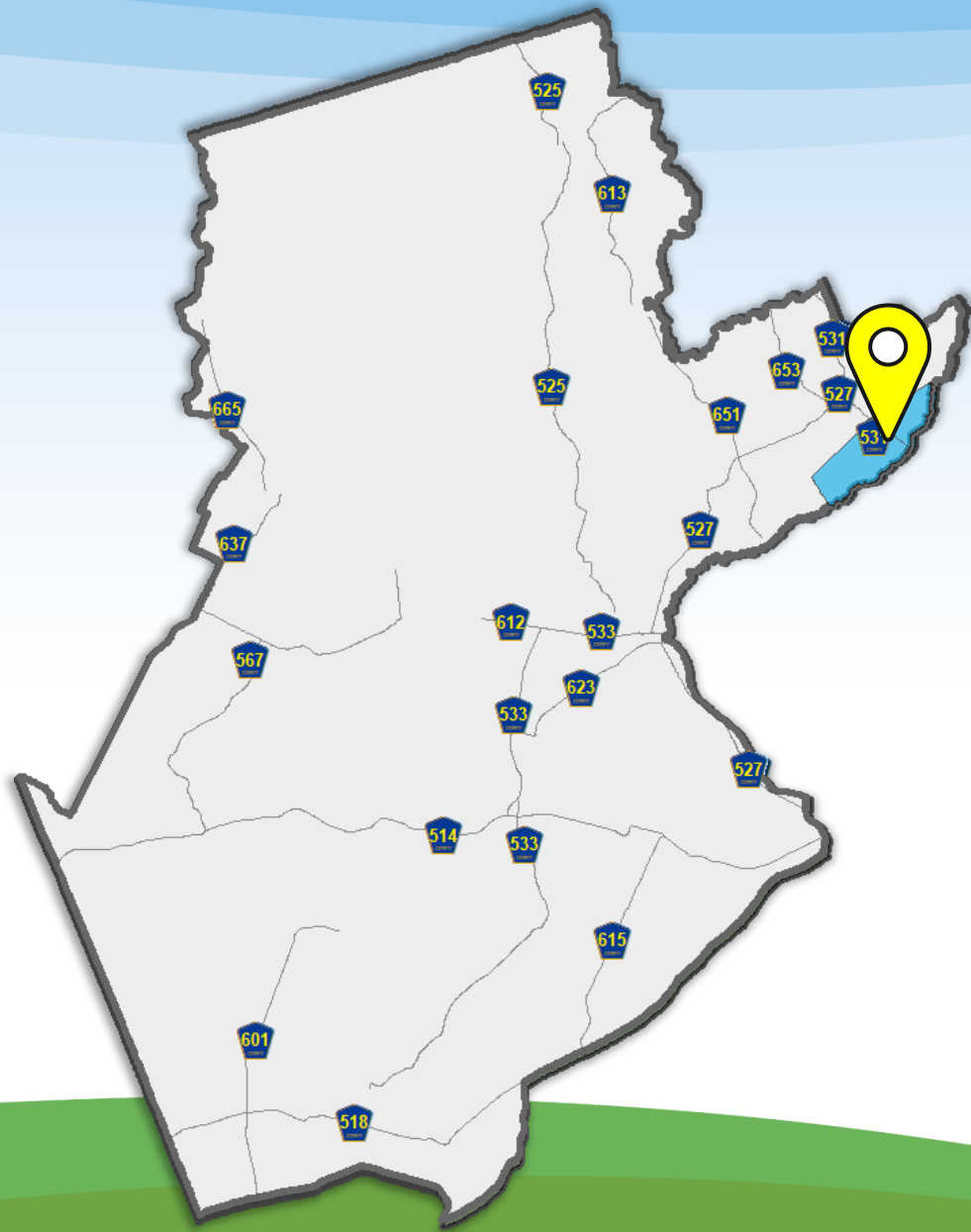
Curb Extensions at Amwell Road (CR 650)





Main Street Recommendations – Pedestrian Connectivity





North Plainfield Borough

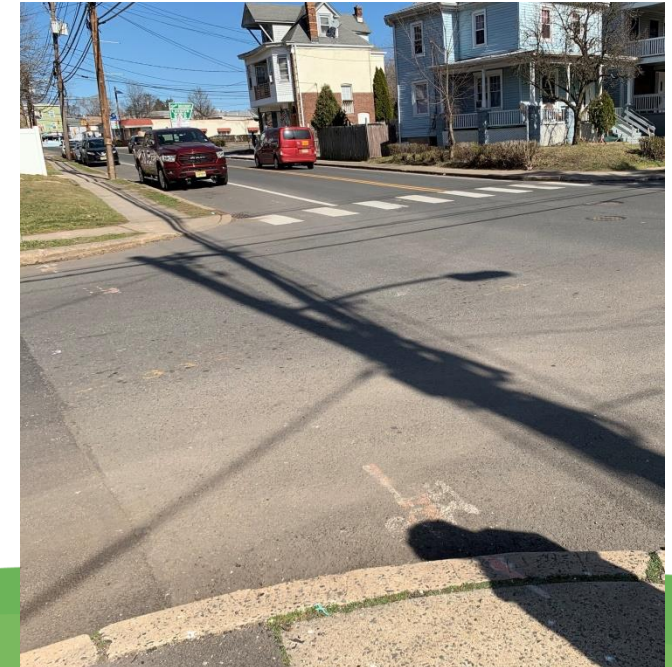
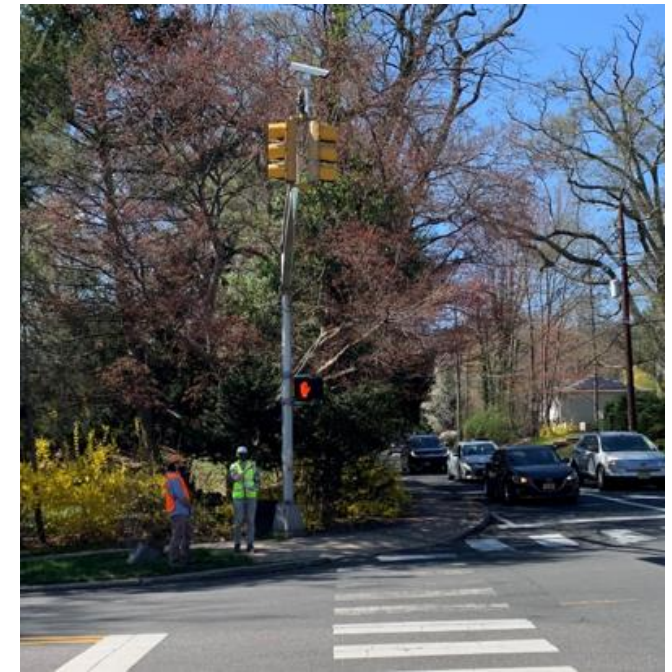
- Greenbrook Road
- Harrington Avenue to CR 531
- 1.27 miles in North Plainfield Borough



Greenbrook Road

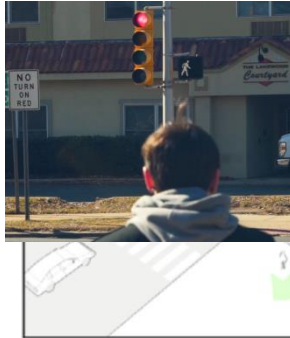
Harrington Avenue to CR 531
1.27 miles in North Plainfield
Borough

- Severe sidewalk heaving at locations with mature trees
- Branches and foliage at the NW corner of West End Avenue intersection
- Steep driveway pitch that slopes toward street near Judges Lane
- Parked vehicles block motorists' sight line to pedestrians at Duer Street



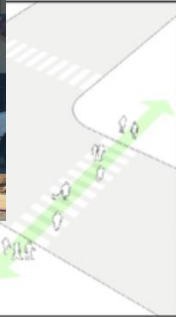


Greenbrook Road Recommendations



PHASE 1

Pedestrians are given a minimum head start of 3–7 seconds when entering the intersection.



PHASE 2

Through and turning traffic are given the green light. Turning traffic yields to pedestrians already in the crosswalk.

Leading Pedestrian Intervals at Grove Street and West End Avenue



Daylighting at Duer Street

Somerset County Roadway Safety Study



Walking School Bus



Rectangular Rapid-Flashing Beacons (RRFBs) at Midblock Crossing Locations





Greenbrook Road Recommendations – Pedestrian Infrastructure



Upgrade Flashing Advisory School Speed Signing

Clear Intersection Corner Overgrowth

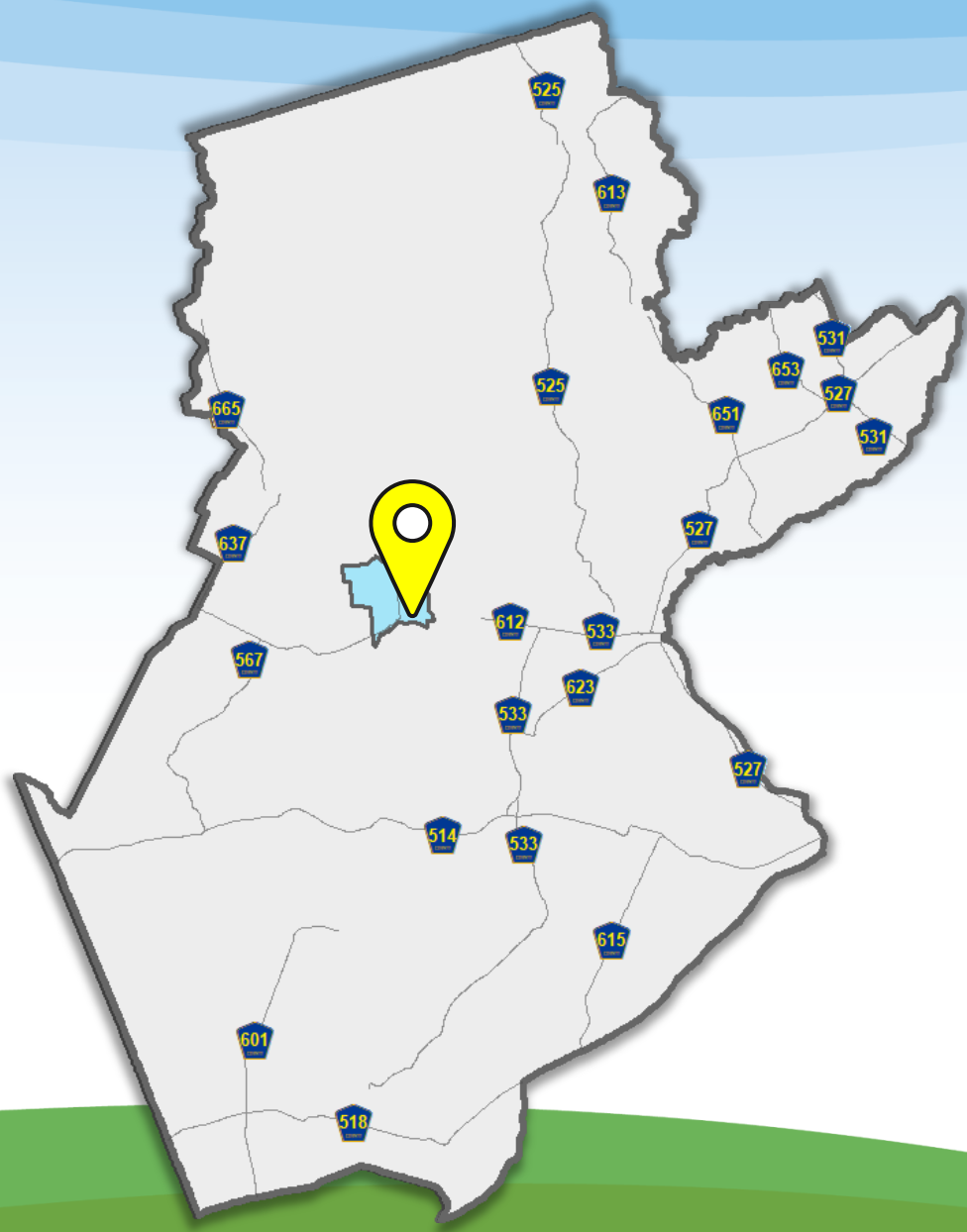
Consider Rectangular Rapid-Flashing Beacons (RRFBs) at Unsignalized Crossing Locations

Stripe/Construct Curb Extensions and Refresh Crosswalk Striping

Daylighting or Other Striping in Shoulder to Prohibit Parking, Allocate Bus Standing, Calm Traffic Speeds

Push Button Upgrades, Lighting, No Turn On Red (NTOR), and Leading Pedestrian Intervals (LPI)





Raritan Borough

- Somerset Street
- 1st Avenue to Route 206
- 0.67 miles in Raritan Borough

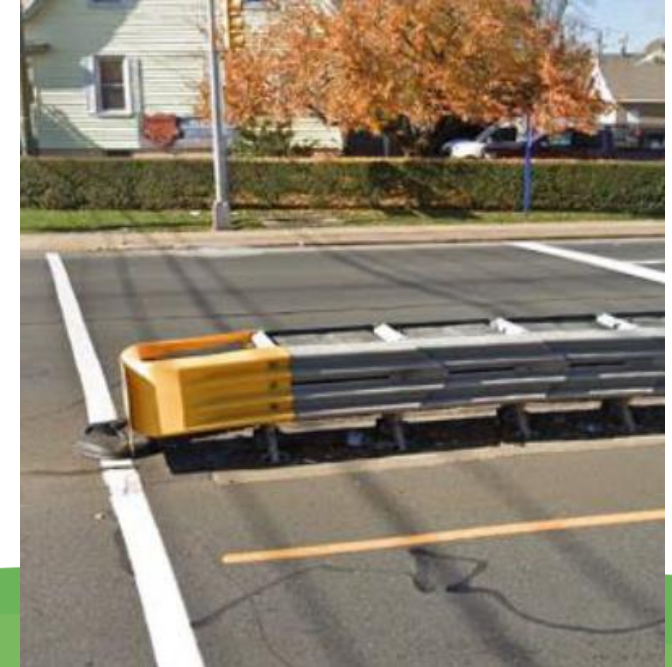


Somerset Street

1st Avenue to RT 206

0.67 miles in Raritan Borough

- Signs are blocked by roadside tree branches
- Crosswalks and daylighting could benefit from striping upgrade
- Ponding near crossings indicate drainage problems
- Stop bar on Route 206 South is set too far back





Somerset Street Recommendations



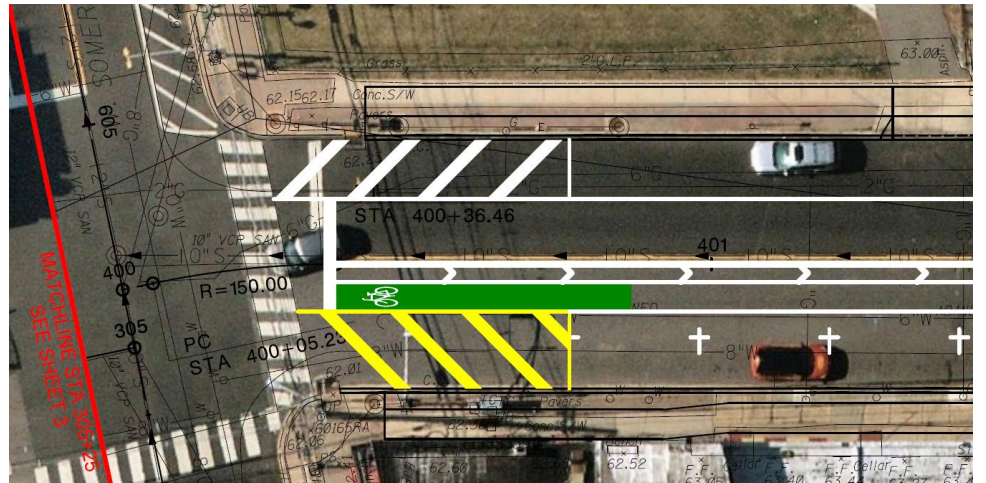
Pilot Parklet at Wall Street Intersection



Ergonomic Crosswalks at Curb Extensions



Overhead Gateway Lighting



TAP Grant Bicycling Improvements





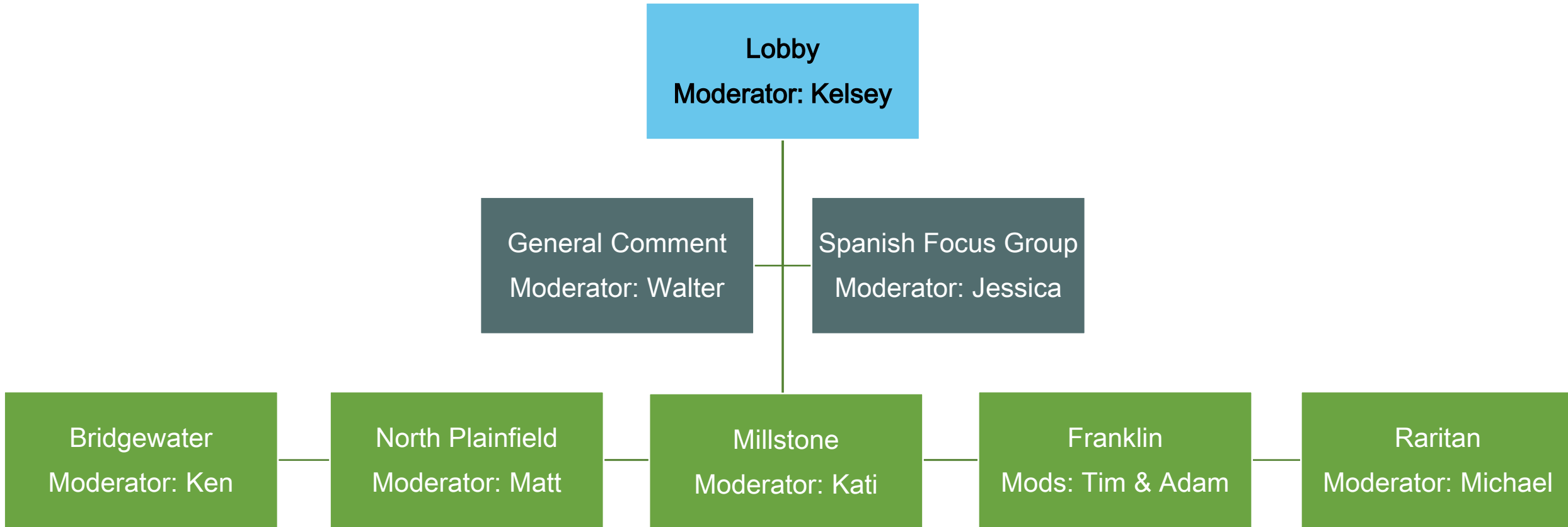
Somerset Street Recommendations – Daylighting/Curb Extensions



Photo 1 – Street-level Perspective



Breakout Sessions



Breakout Room Ground Rules

- **Everyone is encouraged to participate**, give every person a chance to speak.
- **Be concise** to allow enough time for every person to speak.
- **Listen** to other points of view.
- If your breakout room has already started, **listen a moment before jumping in**.
- As a reminder, **these sessions will be recorded**.
- Participants are encouraged to **stay for the entire breakout session**.



Breakout Rooms

1. FINDERNE Avenue/Main Street in Bridgewater Township – Road Diet
2. Franklin Boulevard in Franklin Township – Road Diet
3. Main Street in Millstone Borough – Pedestrian Connectivity
4. Greenbrook Road in North Plainfield Borough – Pedestrian Infrastructure
5. Somerset Street in Raritan Borough – Daylighting / Curb Extensions

QUESTIONS:

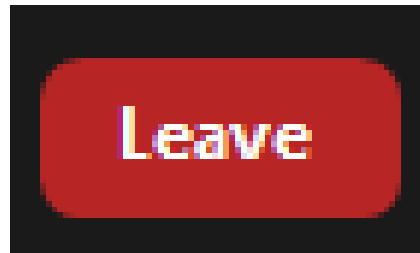
- What are your initial reactions to these recommendations?
- Would these recommendations improve safety along the corridor? Why/why not?
- What do you think about the major safety measure proposed along the corridor?
- Would you support the major safety measure proposed along the corridor? Why/why not?
- Any other safety measure discussed during the meeting that you would/would not support?



Schedule

- 7:45 – Discussion of Potential Safety Measures
- 8:25 – Five-minute warning
- 8:30 – Return to Main Room

If you need to leave early, simply click the Leave button.



Next Steps

- Not Your Only Opportunity to Comment
- Project Email: SCroadwaysafetystudy@co.somerset.nj.us
- Wednesday, October 20th
- End of Study – Thanksgiving 2021
- Ideas for Future Studies/Projects, County and Municipalities

Visit the project website for more information:

<https://www.co.somerset.nj.us/government/public-works/planning/somerset-county-roadway-safety-study>

