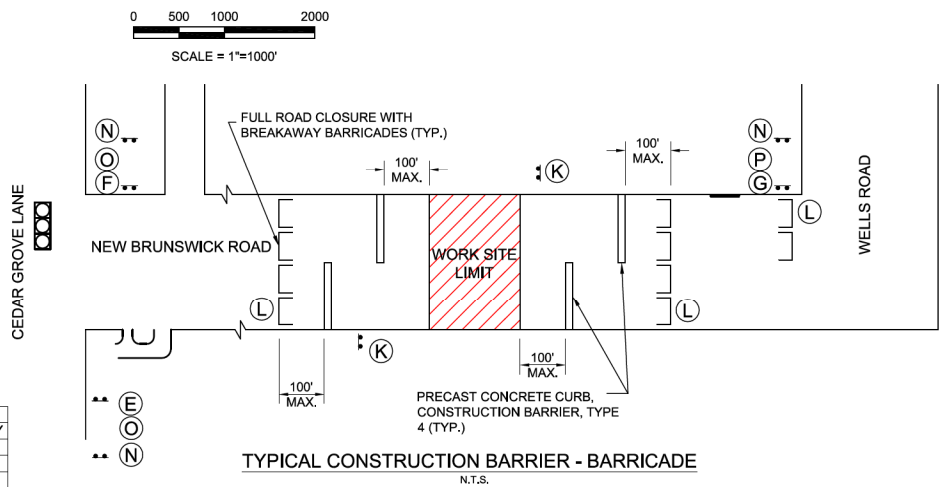
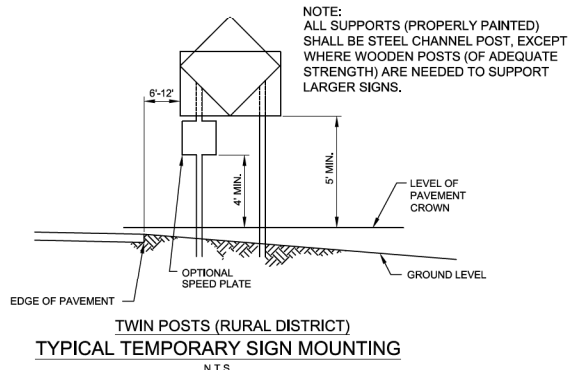


SIGN LEGEND	SIGN TYPE	SIGN SIZE	CONTRACT QUANTITY	AREA (SF)
(A)	W20-2	36"x36"	-	-
(B)	W20-3	36"x36"	1	9
(C)	W20-3	36"x36"	1	9
(D)	W20-3	36"x36"	1	9
(E)	M4-9S	30"x24"	10	50
(F)	M4-9R	30"x24"	16	80
(G)	M4-9L	30"x24"	5	15
(H)	M4-8a	24"x18"	2	6
(I)	M4-10R	48"x18"	-	-
(J)	M4-10L	48"x18"	-	-
(K)	S-1	60"x36"	-	-
(L)	R11-4	60"x30"	-	-
(M)	R11-3b	60"x30"	4	50
(N)	S-2	60"x36"	1	15
(O)	S-3	60"x12"	23	115
(P)	S-4	60"x12"	8	40
TOTAL			398	

- GENERAL NOTES:
- ALL WORK SHALL BE PERFORMED IN ACCORDANCE WITH THE CURRENT EDITION OF THE "MANUAL ON UNIFORM TRAFFIC CONTROL DEVICES". SEPARATE PAYMENT WILL NOT BE MADE FOR RELOCATION OR RESETTING TRAFFIC CONTROL DEVICES AS REQUIRED OR DIRECTED.
 - SPECIAL SIGNS SHALL HAVE A BLACK MESSAGE OR ARROW ON A FLUORESCENT ORANGE RETROREFLECTIVE BACKGROUND AND SHALL BE FABRICATED FROM THE MATERIAL SPECIFIED IN THE CURRENT EDITION OF "STANDARD SPECIFICATIONS FOR ROAD AND BRIDGE CONSTRUCTION" FROM NEW JERSEY'S DEPARTMENT OF TRANSPORTATION. FOR PROPER LETTER STROKE AND DESIGN, REFER TO THE CURRENT EDITION OF "STANDARD ALPHABETS FOR HIGHWAY SIGNS AND PAVEMENT MARKINGS" FROM THE FEDERAL HIGHWAY ADMINISTRATION. SPACING BETWEEN WORDS IN A LINE, BETWEEN LINES OF A MESSAGE, AND BORDER REQUIREMENTS SHOULD BE DETERMINED BY GOOD SIGN-PAINTING PRACTICES.
 - FOR MORE INFORMATION ABOUT STANDARD AND SPECIAL SIGNS, REFER TO THE CURRENT EDITIONS OF "STANDARD HIGHWAY SIGNS" AND "MANUAL ON UNIFORM TRAFFIC CONTROL DEVICES FOR STREETS AND HIGHWAYS", BOTH FROM THE FEDERAL HIGHWAY ADMINISTRATION.
 - ONLY TYPE III BREAKAWAY BARRICADES THAT ARE NCHRP-350 COMPLIANT SHALL BE USED. WOODEN BARRICADES ARE NOT ALLOWED. IN ADDITION, FLASHING/STEADY WARNING LIGHTS SHALL NOT BE AFFIXED TO ANY SIGN OR BARRICADE. SEE CD-159-1 FOR DETAILS.
 - THE ADVANCE WARNING SIGNS (S-1) ARE TO BE POSTED A MINIMUM OF TWO WEEKS PRIOR TO THE EFFECTIVE DATE OF THE DETOUR, AND ARE TO BE REMOVED AT THE START OF CONSTRUCTION. THE ADVANCED WARNING SIGNS SHALL BE PLACED WITHIN THE PROPOSED PROJECT LIMITS.
 - THE CONTRACTOR IS TO NOTIFY THE SOMERSET COUNTY ENGINEERING DEPARTMENT AT LEAST 48 HOURS PRIOR TO THE INSTALLATION OF DETOUR SIGNS. ALL DETOUR SIGNS SHALL BE COVERED/BAGGED UNTIL ONE HOUR PRIOR TO THE BEGINNING OF THE DETOUR.
 - UNLESS NOTED OTHERWISE, ALL SIGNS AND BARRICADES SHALL BE FURNISHED BY THE CONTRACTOR AND PLACED BY HIM/HER AT THE LOCATIONS AS SHOWN ON THE PLANS OR DESIGNATED BY THE ENGINEER, IF SO DIRECTED BY THE ENGINEER, AND AT THE UNIT PRICE BID, THE CONTRACTOR SHALL SUPPLY AND PLACE ADDITIONAL SIGNS AND BARRICADES.
 - THE CONTRACTOR SHALL COORDINATE WITH THE ENGINEER AND THE LOCAL BOROUGH OR TOWNSHIP SHOULD THE NEED ARISE TO CLOSE A LOCAL ROAD OTHER THAN THAT CURRENTLY SHOWN ON THIS PLAN.
 - IF APPLICABLE, THE CONTRACTOR SHALL STAGE CONSTRUCTION SO THAT ONLY ONE INTERSECTION IS CLOSED TO ALL VEHICULAR TRAFFIC AT ANY GIVEN TIME. SAFE PASSAGE IS TO BE PROVIDED TO ALL LOCAL TRAFFIC WITHIN THE PROJECT'S LIMITS, AND EMERGENCY VEHICLES SHALL HAVE ACCESS.
 - ALL SIGNS SHALL BE LOCATED WITHIN THE BOROUGH/TOWNSHIP, COUNTY OR STATE RIGHT-OF-WAY.
 - THE CONTRACTOR IS DIRECTED TO NOTIFY FRANKLIN TOWNSHIP AND FRANKLIN TOWNSHIP POLICE DEPARTMENT AND THE MIDDLEBUSH VOLUNTEER FIRE DEPARTMENT TWO WEEKS PRIOR TO THE START OF CONSTRUCTION AND 48 HOURS PRIOR TO IMPLEMENTATION OF THE DETOUR.
 - POSITIVE CLOSURE SHALL BE MAINTAINED BETWEEN THE PRECAST CONCRETE CURBS DURING NONWORKING HOURS. THE CURB NEED NOT BE BOLTED DOWN. SEE NJDOT CD-159-4 FOR DETAILS.
 - ACCESS SHALL BE PROVIDED TO ALL DRIVEWAYS, DWELLINGS, FIELD ENTRANCES AND MAIL BOXES AT ALL TIMES.
 - STREET NAME SIGNS (S-3) SHOULD BE PLACED ABOVE DETOUR SIGNS (M4-8 AND M4-9) AS PER CURRENT MUTCD STANDARDS.
 - ALL SMALL SIGN SUPPORTS SHALL BE OF THE BREAKAWAY TYPE WITH EXCEPTION OF THOSE INSTALLED BEHIND GUIDE RAIL OR OTHER ROADSIDE BARRIER.
 - ALL POSTS SHALL BE OF ADEQUATE LENGTH TO MEET THE REQUIREMENTS FOR ERECTION AS STATED IN THE CURRENT MUTCD.
 - TO EXTEND THE HEIGHT OF A SIGN POST, A MAXIMUM OF ONE SPLICE MAY BE MADE AND MUST BE A MINIMUM OF 9 FEET FROM THE GROUNDLINE TO CENTER OF SPLICE.

LEGEND:

- DETOUR SIGNS
- DETOUR ROUTE
- BARRICADES
- MUNICIPAL BOUNDARY
- TRAFFIC SIGNAL
- PROJECT LOCATION



TO BE CONSTRUCTED			
ITEM NO.	ITEM	UNIT	QUANTITY
16	BREAKAWAY BARRICADE, TYPE III	UNIT	10
18	CONSTRUCTION BARRIER CURB, TYPE 4	LF	40
19	CONSTRUCTION SIGNS	SF	398

SOMERSET COUNTY ENGINEERING
 REHABILITATION OF SOMERSET COUNTY BRIDGE NO. K0607
 NEW BRUNSWICK ROAD OVER AL'S BROOK
 TOWNSHIP OF FRANKLIN
 SOMERSET COUNTY, NEW JERSEY

DETOUR PLAN

NAIK CONSULTING GROUP, PC
 Metroplex Plaza,
 200 Metroplex Drive, Suite 403
 Edison, NJ 08817
 Ph: 732-777-0030 Fax: 732-777-0040

	SCALE:	DATE:
	AS SHOWN	9/18/2020
	DESIGNED:	CHECKED:
	CS	TWD
TODD W. DAVIES, P.E. NEW JERSEY PROFESSIONAL ENGINEER NO. 24603471100		SHEET NO. XX OF XX

NO.	DATE	REVISIONS	BY

W:\219003 Somerset Bridge K0607\3 CAD\Sheet\PC Somerset\Detour Plan.dwg, 2/6/2021, 3:34 PM