

PEDESTRIAN TRAFFIC CONTROL PLAN – CONSTRUCTION SEQUENCE 1

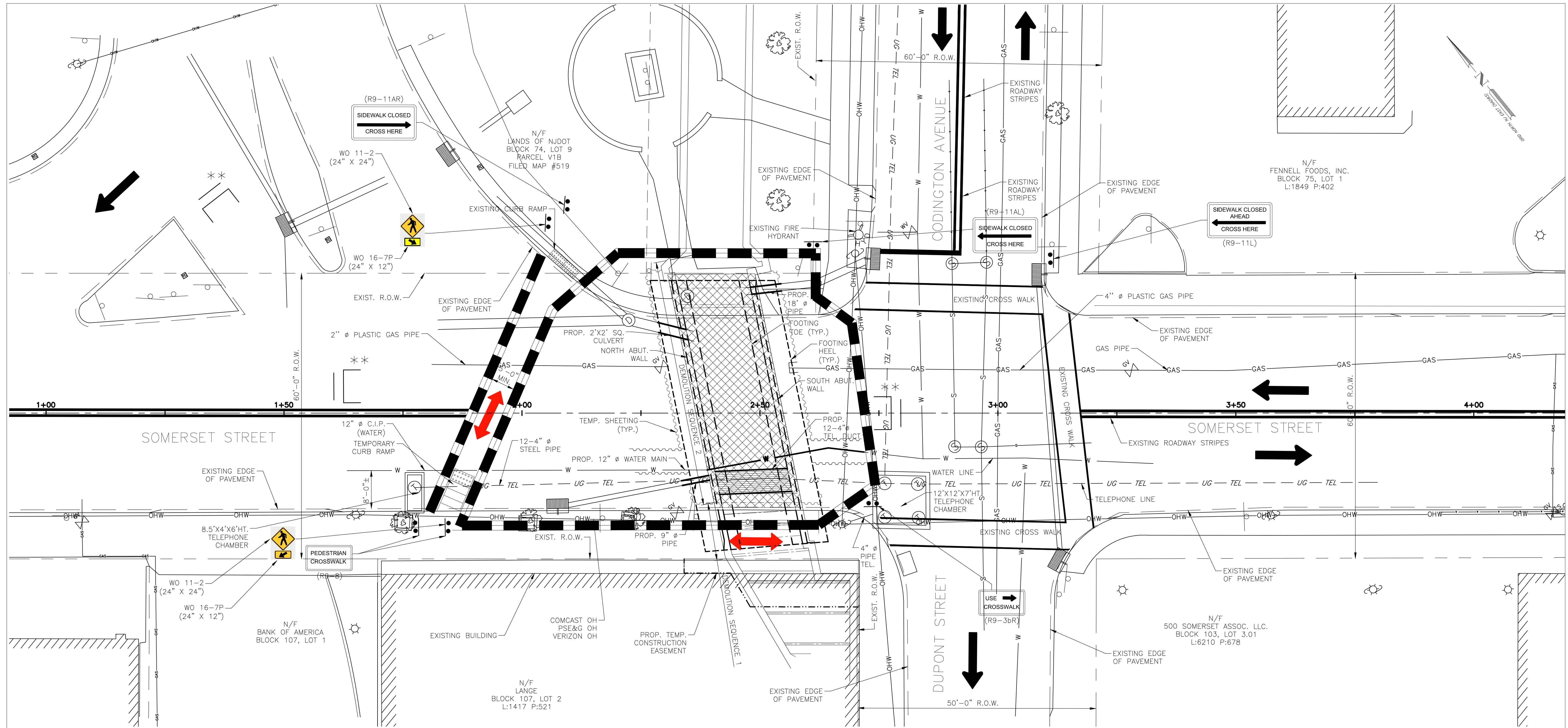
SCALE 1" = 10'-0"

LEGEND:

- WORK AREA
- VEHICULAR TRAFFIC
- PEDESTRIAN TRAFFIC
- CONCRETE BARRIER WITH FENCE
- PEDESTRIAN FENCE
- \*\* SEE TRAFFIC DETOUR PLAN ON SHEET 1 FOR DETAILS

HORIZONTAL DATUM IS BASED UPON NEW JERSEY STATE PLANE NAD 1983, AND THE VERTICAL DATUM IS BASED UPON NAVD 1988.

SOMERSET COUNTY ENGINEERING			
REPLACEMENT OF COUNTY BRIDGE NO. M1019 SOMERSET STREET OVER CRAB BROOK BOROUGH OF NORTH PLAINFIELD, SOMERSET COUNTY NEW JERSEY			
<b>PEDESTRIAN TRAFFIC CONTROL PLAN - CONSTRUCTION SEQUENCE 1</b>			
NO.	DATE	REVISION	BY
KUANG-YU LIAO, P.E. 			KC ENGINEERING & LAND SURVEYING, P.C. 370 7TH AVE. (SUITE 1604) NEW YORK, NY 10001
PROFESSIONAL ENGINEER N.J. LICENSE NO. 24GE03639000			DATE: 03/03/20 SHEET NO. 12 OF 34



PEDESTRIAN TRAFFIC CONTROL PLAN – CONSTRUCTION SEQUENCE 2  
 SCALE 1" = 10'-0"

- LEGEND:**
- WORK AREA
  - VEHICULAR TRAFFIC
  - PEDESTRIAN TRAFFIC
  - CONCRETE BARRIER WITH FENCE
  - \*\* SEE TRAFFIC DETOUR PLAN ON SHEET 1 FOR DETAILS

HORIZONTAL DATUM IS BASED UPON NEW JERSEY STATE PLANE NAD 1983, AND THE VERTICAL DATUM IS BASED UPON NAVD 1988.

SOMERSET COUNTY ENGINEERING			
REPLACEMENT OF COUNTY BRIDGE NO. M1019 SOMERSET STREET OVER CRAB BROOK BOROUGH OF NORTH PLAINFIELD, SOMERSET COUNTY NEW JERSEY			
<b>PEDESTRIAN TRAFFIC CONTROL PLAN - CONSTRUCTION SEQUENCE 2</b>			
NO.	DATE	REVISION	BY
		KUANG-YU LIAO, P.E. 	
		PROFESSIONAL ENGINEER N.J. LICENSE NO. 24GE0369000	
KC ENGINEERING & LAND SURVEYING, P.C. 370 7TH AVE. (SUITE 1604) NEW YORK, NY 10001			DATE: 03/03/20 SHEET NO. 13 OF 34