

**KEEP  
SOMERSET  
MOVING**  
**TRANSPORTATION PLAN 2045**

**Public Meeting**

**February 1, 2023, 6 pm**

# Meet the Project Team



## Office of Planning, Policy and Economic Development

**Walter C. Lane, AICP, PP, Director**

**Ken Wedeen, AICP, PP, Supervising Planner, Co-Project Manager**

**Adam Bradford, AICP, PP, Senior Planner, Co-Project Manager**



**Peter Zambito, Principal Planner**

**William Long, Principal Planner**

**Michael Baker**

INTERNATIONAL

**Peter Kremer, AICP, PP, Project Manager**

**Anthony Durante, AICP, RSP<sub>1</sub>, Deputy Project Mgr**



**John Federico, PE, AICP, PP, Planning**

**Heather Martin, AICP, Equity & Environmental Justice**



**Susan G Blickstein, AICP, PP, PhD, Community Engagement**

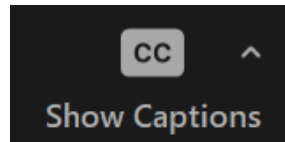
**Liz Ward, AICP, PP, Community Engagement**



# Welcome/Housekeeping

## During the meeting:

- Your line is muted, and you won't be able to share your video or screen
- Use the "Chat" box for general comments and questions
- Your questions and comments will be addressed at the end
- Caption and translation options can be found under "Show Captions" button



## Durante la reunión:

- Su línea está silenciada y no podrá compartir su video o pantalla
- Utilice el cuadro "Chat" para comentarios generales y preguntas; Las preguntas se contestarán al final de la presentación
- Las opciones de subtítulos y traducción se pueden acceder con el botón "Show Captions"

# Welcome/Housekeeping

## Additional Notes

- This meeting is being recorded
- The recording, presentation slides, and a copy of tonight's Q&A will be posted at: <https://somersetcounty.mysocialpinpoint.com/>
- If you are having technical difficulties, please use the chat function or email: [syang.sgbplanningllc@gmail.com](mailto:syang.sgbplanningllc@gmail.com)



# Today's Agenda

1. Purpose of the Transportation Plan
2. Equity Assessment
3. Existing Conditions Analysis
4. Community Engagement
5. Breakout Room Discussions
6. Q&A
7. Next Steps



# Purpose of the Plan

- Guide transportation decision-making: plans, policies, projects
- Consider the needs of all users and travel modes
- Equity-based approach focused on equity communities
- Develop projects for Six-Year County Capital Improvement Program
- Collaborate with municipal and agency partners on coordinated land use and transportation planning decisions
- Address environmental concerns, traffic congestion, and safety



# Transportation Plan Timeline

# Dates

Project Team Kickoff	July 2022
Develop community engagement plan	August 2022
Public and stakeholder outreach and coordination	Throughout duration of the plan
TAC Meeting 1: Kickoff and Visioning	September 15, 2022
Base mapping, data collection, and analysis	Ongoing due to data availability
Community pop-up events, Survey, Mapping Tool, Focus Groups, Municipal Coordination	September-December 2022
TAC Meeting 2: Equity Analysis, Baseline Data, Community Engagement Summary	January 19, 2023
<b>Public Meeting 1: : Equity Analysis, Baseline Data, Community Engagement, Plan Vision</b>	<b>February 1, 2023</b>
Draft findings and recommendations	Spring 2023
TAC Meeting 3: Draft Preferred Transportation Plan	Spring 2023
Public Meeting 2: Draft Preferred Transportation Plan	Summer 2023
Assemble Draft Preferred Transportation Plan	Summer 2023
Final Plan and Deliverables	Fall 2023





# Poll Question 1

Do you live, work or both live and work in Somerset County? (Select one)

- A. Live (only)
- B. Work (only)
- C. Live and Work
- D. None of the Above





# Poll Question 2

How did you travel today?  
(Select all that apply)

A. Walking

B. Bicycling

C. Bus

D. Train

E. Driving

F. Rideshare/Taxi

G. Scooter

H. Mobility Device

I. Other

# Equity Assessment

## Purpose of the Equity Assessment

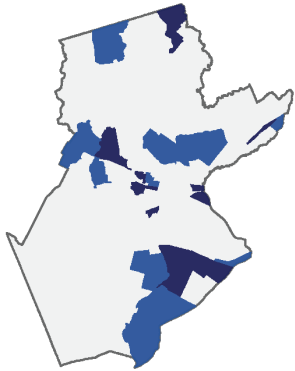
- Identify traditionally underrepresented populations
- Provide opportunity for all to participate
- Incorporate comments and concerns into the plan
- Improve access to opportunity through improved safety and mobility

The assessment is based on NJTPA's Equity Assessment methodology

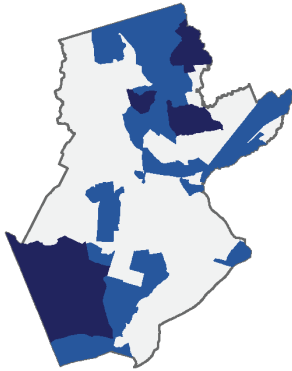


# Equity Data Analysis

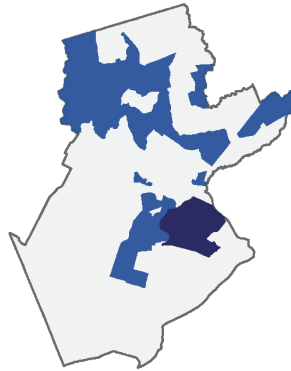
AGE UNDER 5 YEARS



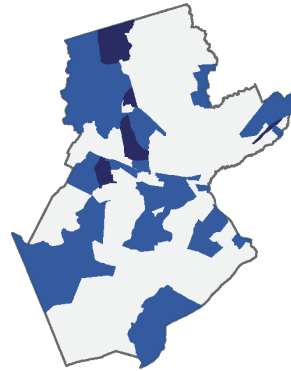
AGE 5 TO 17 YEARS



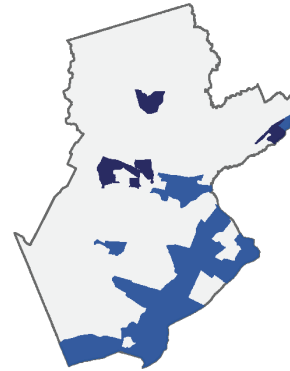
AGE OVER 65 YEARS



FEMALE



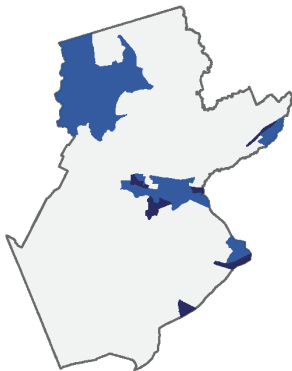
FOREIGN BORN



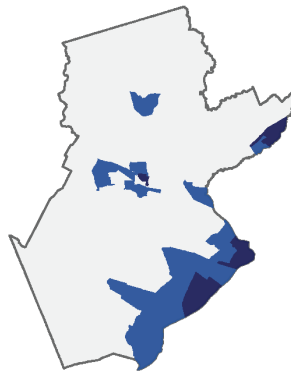
LIMITED ENGLISH PROFICIENCY



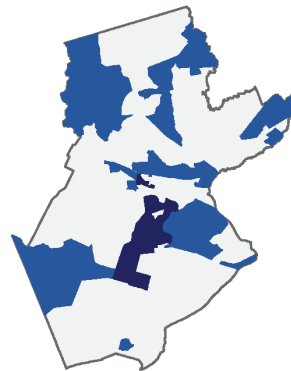
LOW INCOME



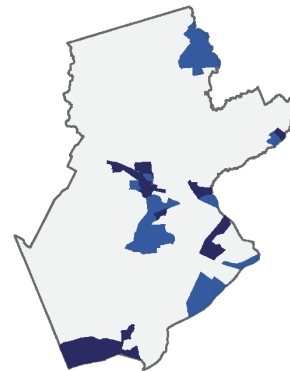
MINORITY



PEOPLE WITH DISABILITIES



ZERO VEHICLE HOUSEHOLDS

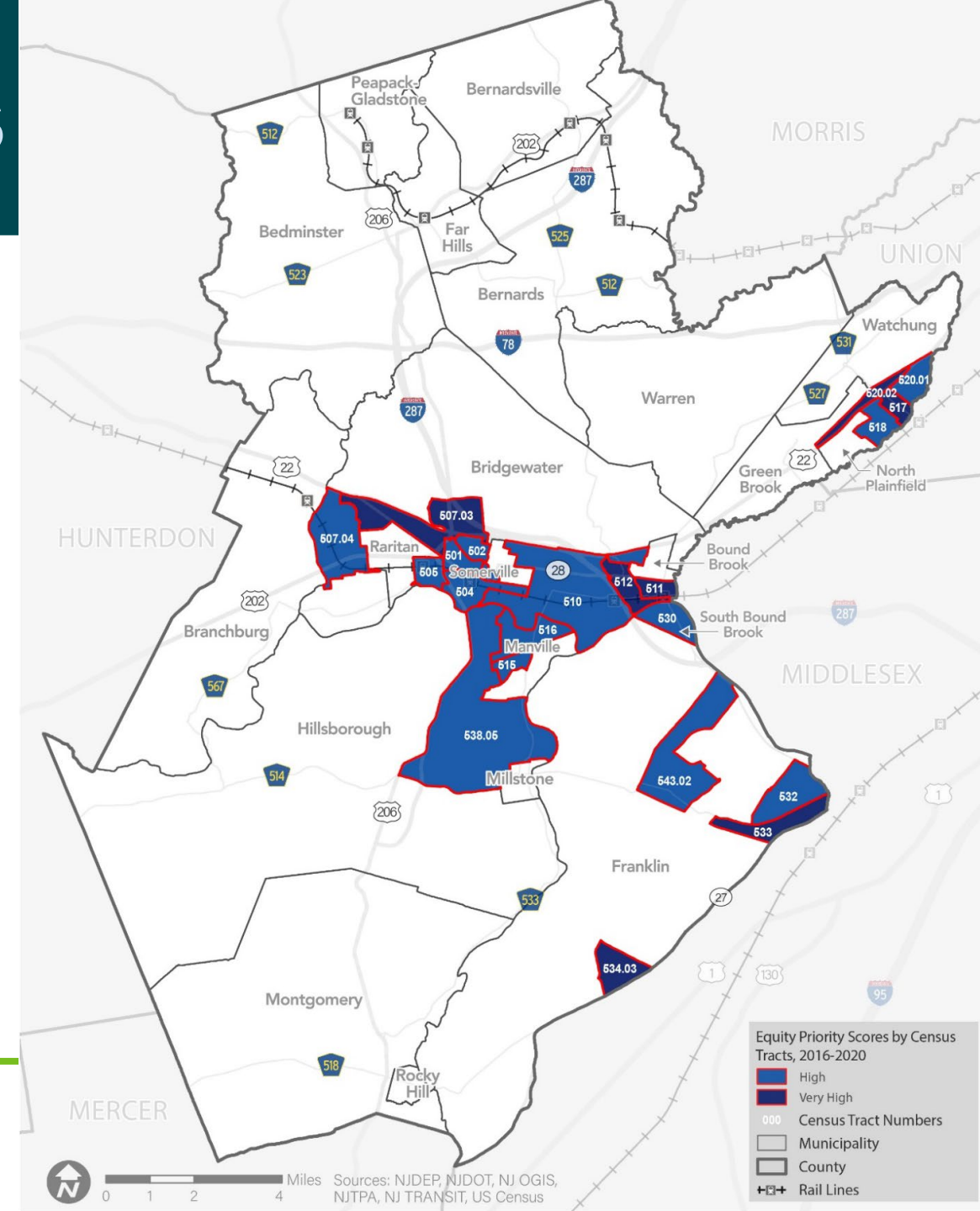


■ Above Average  
■ Well Above Average

# Equity Priority Areas

## Highest-Scoring Equity Priority Areas

- Bound Brook
- Bridgewater
- Franklin
- Hillsborough
- Manville
- North Plainfield
- Raritan
- Somerville
- South Bound Brook



# Equity Priority Areas & Indicators

Census Tract (CT)	Municipality	Equity Indicators										Equity Score
		Minority	Foreign-born	Low Income	LEP	Age Over 65	Age Under 5	Ages 5 to 17	People with Disabilities	Female	Zero Vehicle	
CT 511	Bound Brook	Dark Blue	Dark Blue	Dark Blue	Dark Blue	Light Blue	Dark Blue	Dark Blue	Light Blue	Dark Blue	Dark Blue	Very High
CT 517	North Plainfield	Dark Blue	Dark Blue	Dark Blue	Dark Blue	Light Blue	Light Blue	Light Blue	Dark Blue	Dark Blue	Dark Blue	Very High
CT 520.02	North Plainfield	Dark Blue	Dark Blue	Dark Blue	Dark Blue	Light Blue	Dark Blue	Light Blue	Light Blue	Dark Blue	Light Blue	Very High
CT 533	Franklin	Dark Blue	Dark Blue	Dark Blue	Dark Blue	Light Blue	Dark Blue	Dark Blue	Dark Blue	Light Blue	Dark Blue	Very High
CT 507.03	Bridgewater	Dark Blue	Dark Blue	Light Blue	Dark Blue	Light Blue	Light Blue	Light Blue	Dark Blue	Dark Blue	Dark Blue	Very High
CT 512	Bound Brook	Dark Blue	Dark Blue	Dark Blue	Dark Blue	Light Blue	Light Blue	Dark Blue	Light Blue	Light Blue	Dark Blue	Very High
CT 534.03	Franklin	Dark Blue	Dark Blue	Dark Blue	Dark Blue	Light Blue	Dark Blue	Light Blue	Light Blue	Dark Blue	Dark Blue	Very High
CT 504	Somerville	Dark Blue	Light Blue	Dark Blue	Dark Blue	Light Blue	Dark Blue	Light Blue	Light Blue	Dark Blue	Dark Blue	High
CT 516	Manville	Light Blue	Light Blue	Dark Blue	Light Blue	Dark Blue	Light Blue	Light Blue	Dark Blue	Dark Blue	Dark Blue	High
CT 518	North Plainfield	Dark Blue	Dark Blue	Dark Blue	Dark Blue	Light Blue	Light Blue	Light Blue	Dark Blue	Light Blue	Dark Blue	High
CT 502	Somerville	Dark Blue	Dark Blue	Dark Blue	Light Blue	Light Blue	Dark Blue	Dark Blue	Light Blue	Dark Blue	Dark Blue	High
CT 505	Raritan	Dark Blue	Dark Blue	Dark Blue	Dark Blue	Light Blue	Light Blue	Light Blue	Dark Blue	Light Blue	Dark Blue	High
CT 532	Franklin	Dark Blue	Dark Blue	Dark Blue	Dark Blue	Light Blue	Light Blue	Dark Blue	Light Blue	Light Blue	Light Blue	High
CT 543.02	Franklin	Light Blue	Dark Blue	Light Blue	Light Blue	Dark Blue	Light Blue	Light Blue	Dark Blue	Dark Blue	Dark Blue	High
CT 501	Somerville	Light Blue	Light Blue	Dark Blue	Dark Blue	Dark Blue	Light Blue	Light Blue	Dark Blue	Light Blue	Dark Blue	High
CT 507.04	Bridgewater	Dark Blue	Dark Blue	Light Blue	Light Blue	Light Blue	Dark Blue	Light Blue	Light Blue	Dark Blue	Light Blue	High
CT 515	Manville	Light Blue	Light Blue	Dark Blue	Light Blue	Light Blue	Dark Blue	Light Blue	Light Blue	Light Blue	Dark Blue	High
CT 520.01	North Plainfield	Dark Blue	Dark Blue	Dark Blue	Dark Blue	Light Blue	Dark Blue	Light Blue	Light Blue	Light Blue	Light Blue	High
CT 510	Bridgewater	Light Blue	Dark Blue	Dark Blue	Dark Blue	Light Blue	Light Blue	Light Blue	Light Blue	Dark Blue	Light Blue	High
CT 530	South Bound Brook	Dark Blue	Light Blue	Dark Blue	Dark Blue	Light Blue	Dark Blue	Light Blue	Light Blue	Light Blue	Dark Blue	High
CT 538.05	Hillsborough	Light Blue	Light Blue	Light Blue	Light Blue	Dark Blue	Light Blue	Light Blue	Dark Blue	Dark Blue	Dark Blue	High

# Equity Goals and Objectives

- Focus public outreach efforts in the Equity Priority Areas
- Emphasize equity throughout the planning and infrastructure lifecycle
- Incorporate equity considerations into the Plan Vision and Goals
- Conceive, develop, and design projects with equity considerations in mind
- Evaluate performance of projects in meeting equity goals



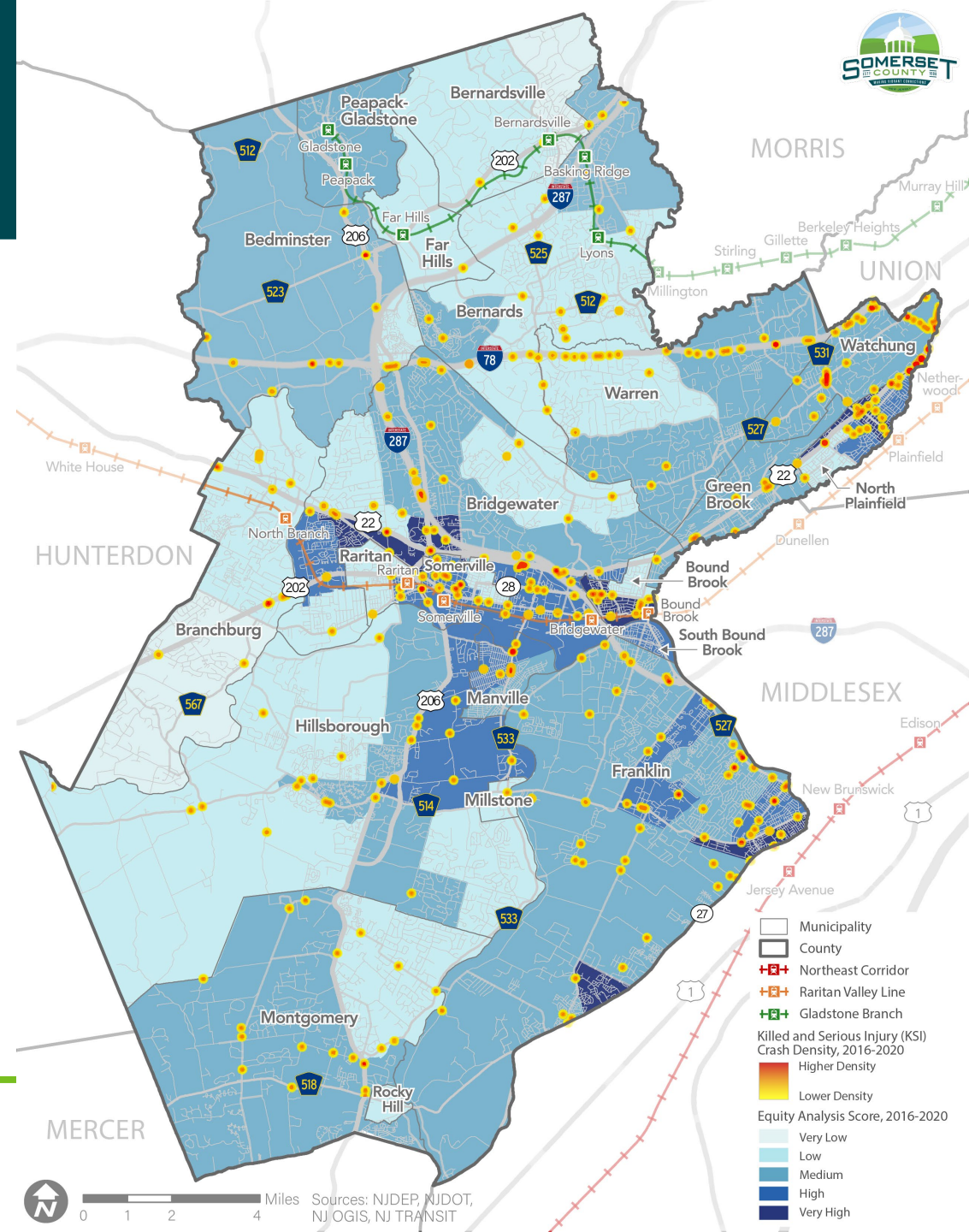
# FSI Crashes (all types) & Equity Overlay



## 407 Fatal and Serious Injury (FSI) crashes

- About one-third (32%) of FSI crashes occurred in high/very high equity priority areas

Roadway Classification	% of FSI Crashes
Interstate	15.0%
State	26.0%
County	34.9%
Municipal	22.6%
Private	1.5%



0 1 2 4 Miles Sources: NJDEP, NJDOT, NJOGIS, NJ TRANSIT

Municipality  
 County  
 Northeast Corridor  
 Raritan Valley Line  
 Gladstone Branch  
 Killed and Serious Injury (KSI) Crash Density, 2016-2020  
 Higher Density  
 Lower Density  
 Equity Analysis Score, 2016-2020  
 Very Low  
 Low  
 Medium  
 High  
 Very High

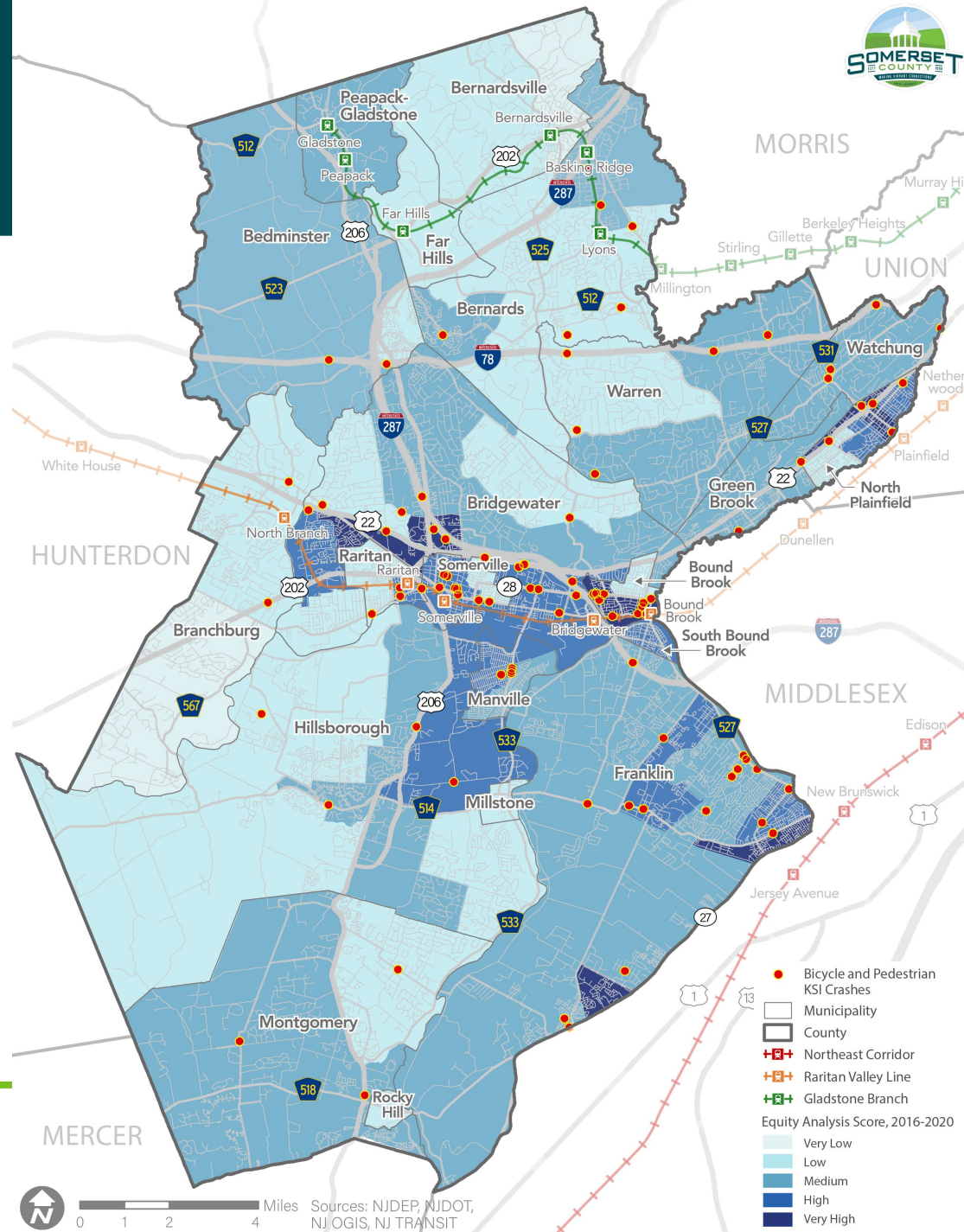
# Bike&Ped FSI Crashes & Equity Overlay



## 98 Bicycle and Pedestrian FSI crashes

- About half (52%) of Bike-Ped FSI crashes occurred in high/very high equity priority areas

Roadway Classification	% of FSI Crashes
Interstate	7.1%
State	20.4%
County	42.9%
Municipal	25.5%
Private	4.1%





# Existing Conditions

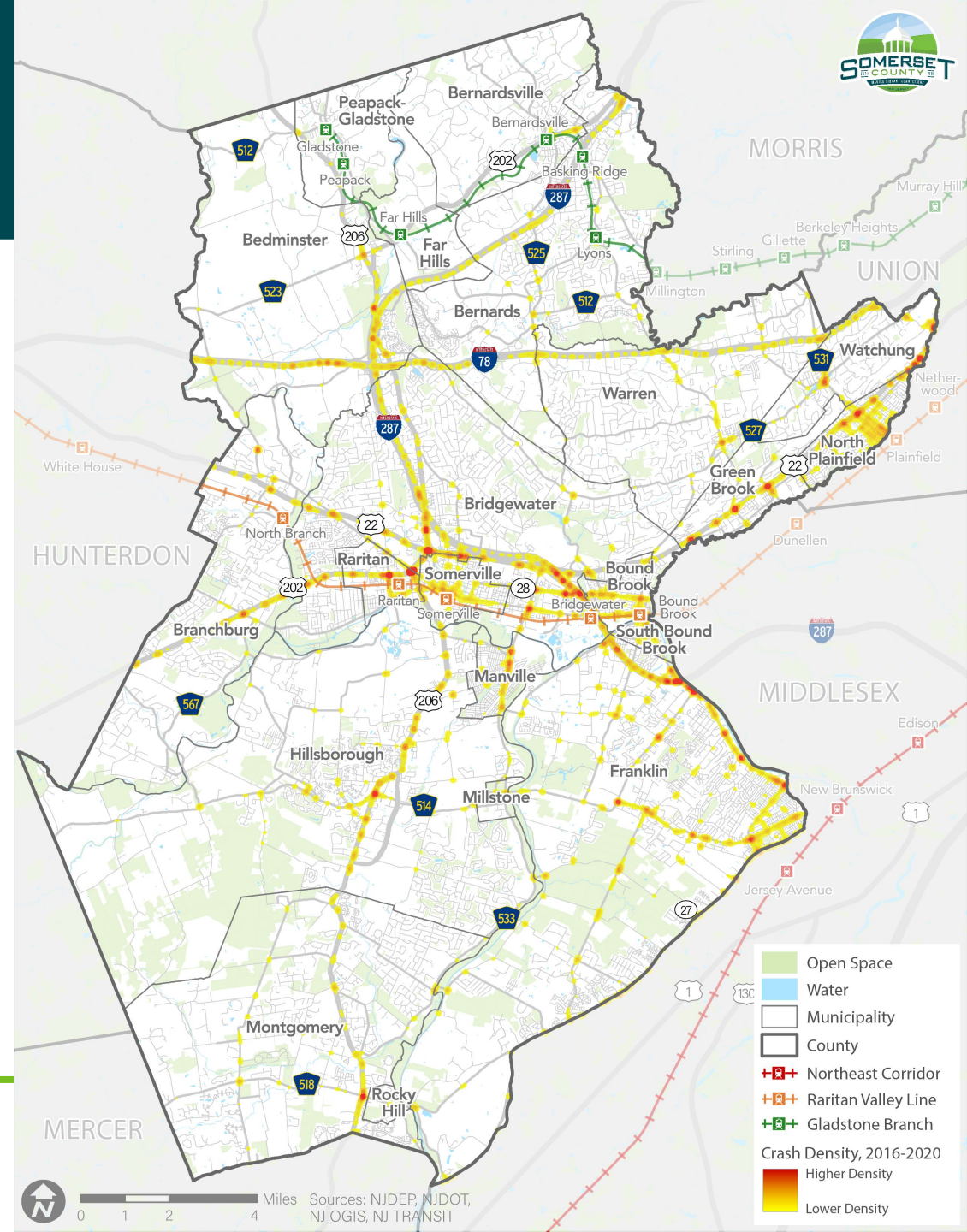
- Crash hotspots (all crash types)
- Bicycle & pedestrian crash hotspots
- Bicycle Level-of-Traffic-Stress



# Crash Hotspots

## 2016-2020 Crash Data Analysis

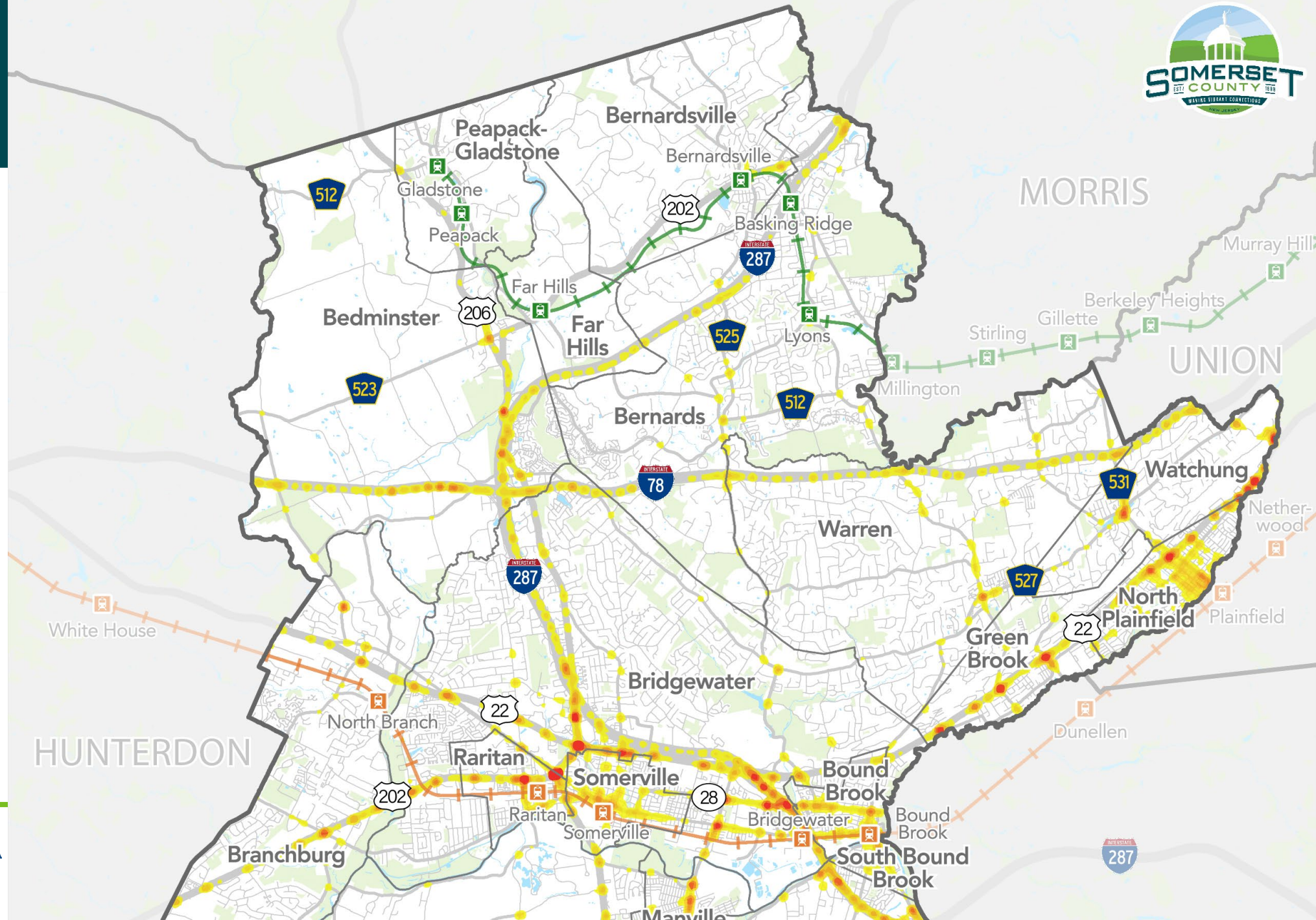
- Total Crashes: 50,239
- Fatal and Serious Injury (FSI) Crashes: 407 (0.8%)
- Pedestrian Crashes: 386 (0.8%)
- Cyclist Crashes: 238 (0.5%)
- Truck Crashes: 5,079 (10.1%)



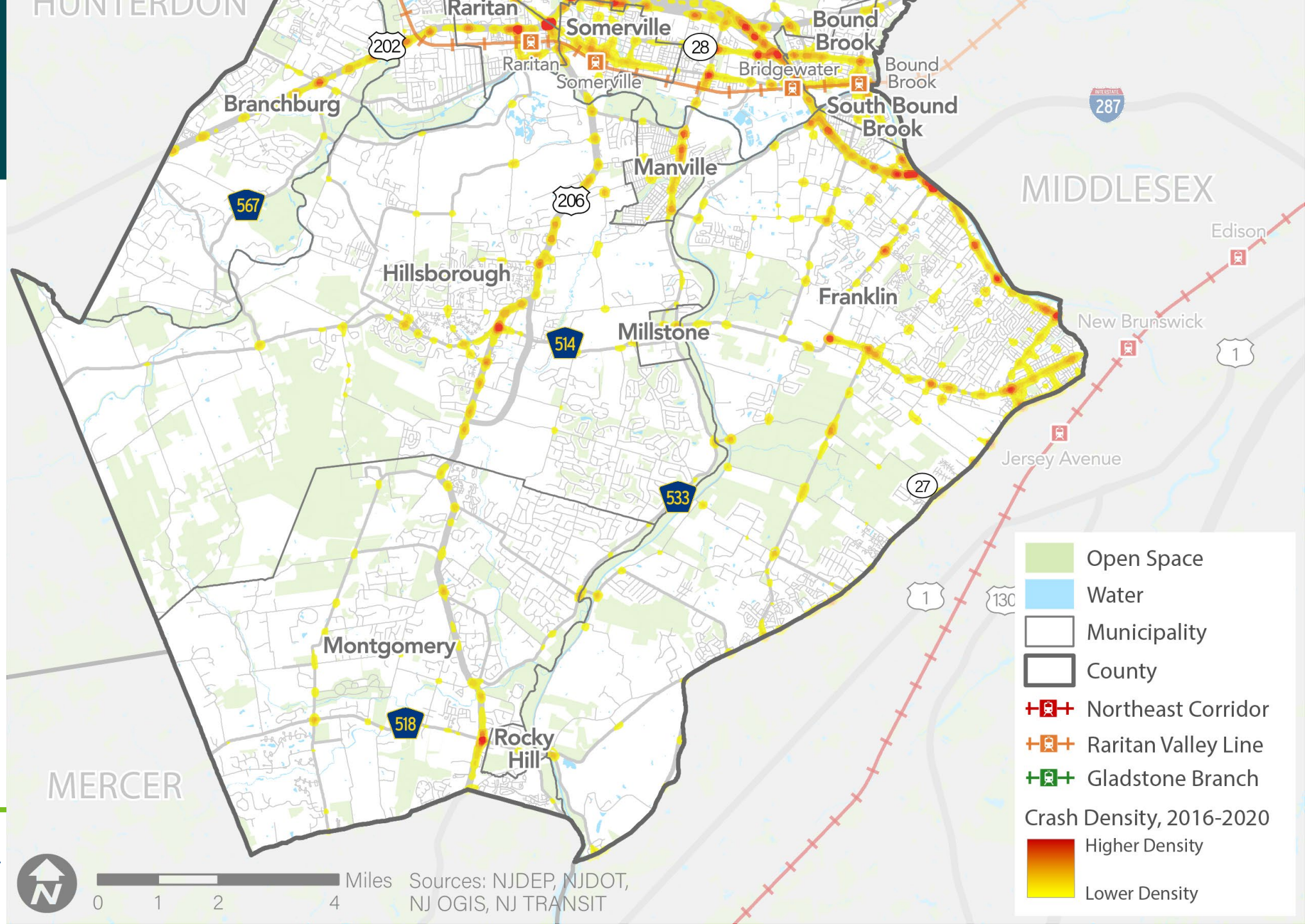
# North



- Open Space
- Water
- Municipality
- County
- Northeast Corridor
- Raritan Valley Line
- Gladstone Branch
- Crash Density, 2016-2020
  - Higher Density
  - Lower Density



# South



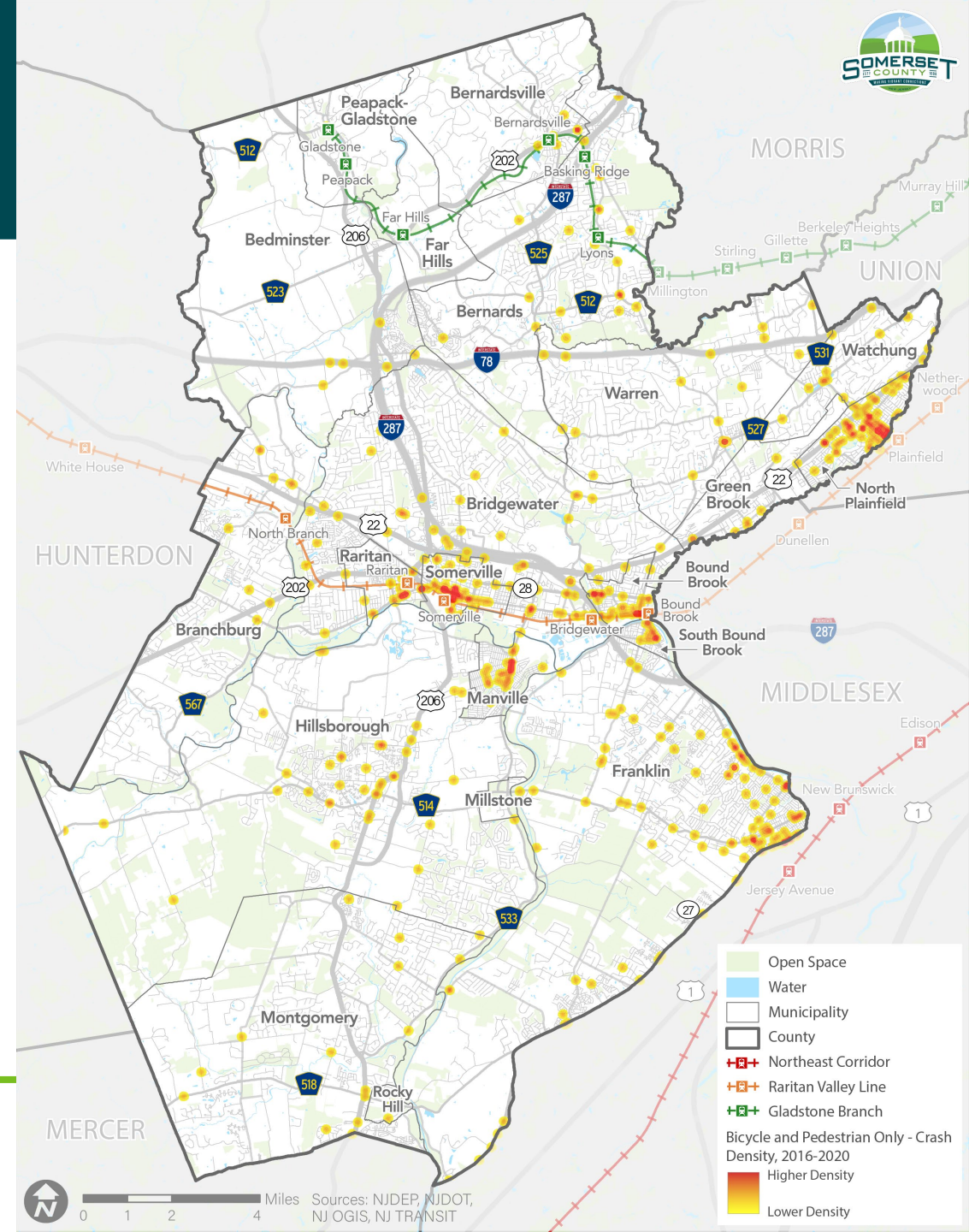
# Bicycle & Pedestrian Crash Hotspots

**624 crashes involving bicyclists and pedestrians**

Higher crash densities observed in:

- Bound Brook
- Bridgewater
- Franklin
- Manville
- North Plainfield
- Raritan
- Somerville
- South Bound Brook

**More than 70%  
of all Bike & Ped  
Crashes**



# Bicycle Level-of-Traffic-Stress

## Level-of-Traffic-Stress (LTS)

Categorize roads by their suitability for bicycling

- **LTS 1: Little to no stress. Suitable for all cyclists including children**
- **LTS 2: Little traffic stress. Suitable for most adults**
- **LTS 3: Moderate traffic stress. Suitable for experienced cyclists**
- **LTS 4: High traffic stress. Only for the most skilled and risk-averse**
- **LTS 5: Bikes are prohibited.**

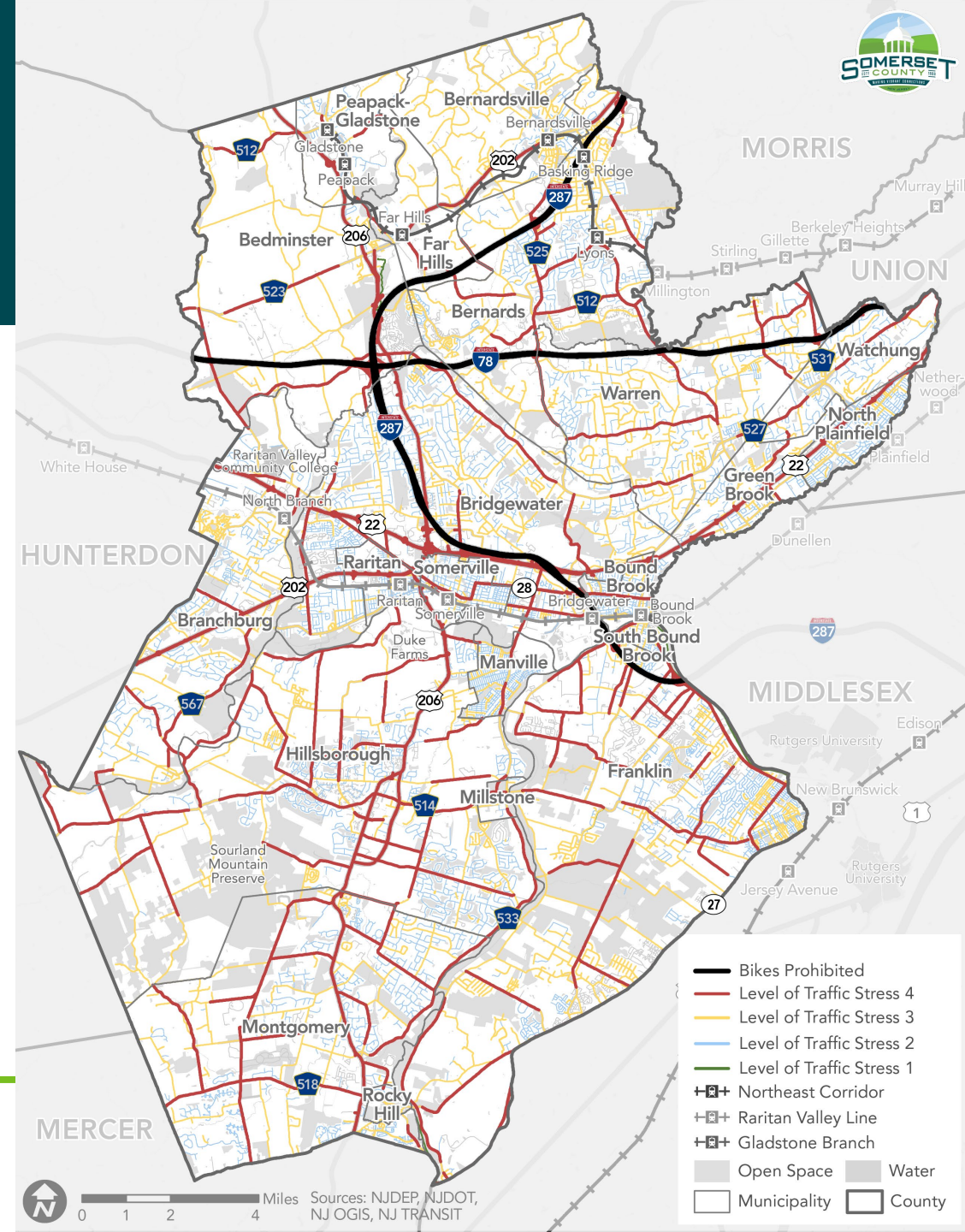


# Bicycle LTS

## NJTPA Methodology

### Mileage by LTS category:

- **LTS 1:** 20 miles (1%)
- **LTS 2:** 777 miles (38.8%)
- **LTS 3:** 668 miles (33.4%)
- **LTS 4:** 444 miles (22.2%)
- **LTS 5:** 92 miles (4.6%)





# Poll Question 3

What is most important to you? (select top 3)

- Reliability & efficiency
- Safety & security
- Connectivity & access to destinations
- Multi-modal options (walking, bicycling, transit)
- Equity & affordability
- Resiliency & sustainability



# Public & Stakeholder Engagement



**Technical Advisory Committee**



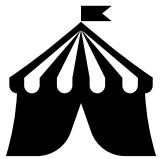
**Discussion groups**



**Public meetings**



**Online Survey &  
Interactive Map**



**Community events**

# Community Events

Date	Event	Location
9/24/2022	Community Day	Manville
9/24/2022	Riverfest	Bound Brook
9/24/2022	Fall Festival	North Plainfield
9/24/2022	Franklin Day	Franklin
10/8/2022	Somerset Journey Through the Past	County Courthouse Green
10/15/2022	Farmer's Market	Montgomery
10/16/2022	Somerset County Diversity Festival	Somerville
10/22/2022	Fall Fest	Bedminster



# Focus Group Discussions

## Key Findings

- 1. Most important issues:** changes in travel since the pandemic, increase in truck traffic/warehousing, increase in severe weather, demographic changes, staffing shortages in the transit industry
- 2. Current strengths:** scenic roadways, vibrant main streets, robust bus service, well-maintained County roadway network, good rail access to NYC, existing and planned trail and greenway network
- 3. Ideas:** bikeshare/micromobility/employer assistance as solutions for first/last mile connections, revisit the County truck network, better dissemination of info on available transit services, more bicycle infrastructure, increase use of freight rail, redefine success by measuring safety
- 4. Vision:** connected, affordable, safe, smart, efficient, healthy, flexible



# Survey Results: Key Findings

- 95% of people selected driving as their primary mode of travel
- One-quarter of participants walk daily and another quarter reported walking a few times a week
- 10% of participants reported bicycle daily or a few times a week
- COVID impacts include more walking & bicycling and less driving, public transit, & rideshare
- People would take transit, walk, and bike more frequently if it were safe and convenient



# Survey Highlights: Barriers

## Public Transit

1. Lack of convenient routes/ destinations (71%)
2. First/last mile connectivity (44%)
3. Travel time (29%)

## Bicycling

1. Lack of safe bikeways (57%)
2. High-speed, high-volume vehicle traffic (45%)
3. Aggressive motorist behavior (26%)

## Walking

1. Lack of sidewalks, paths, or trails (61%)
2. High-speed, high-volume traffic (40%)
3. Time or distance to destinations (38%)

# Survey Results: If you could change one thing, what would it be?

## Public Transit

- More transit - expansion of existing service as well as new service

## Bike/Ped

- More bike/ped friendly environment with greater safety and connectivity

## Driving

- Speeding/aggressive driving, congestion


# Interactive Mapping Tool



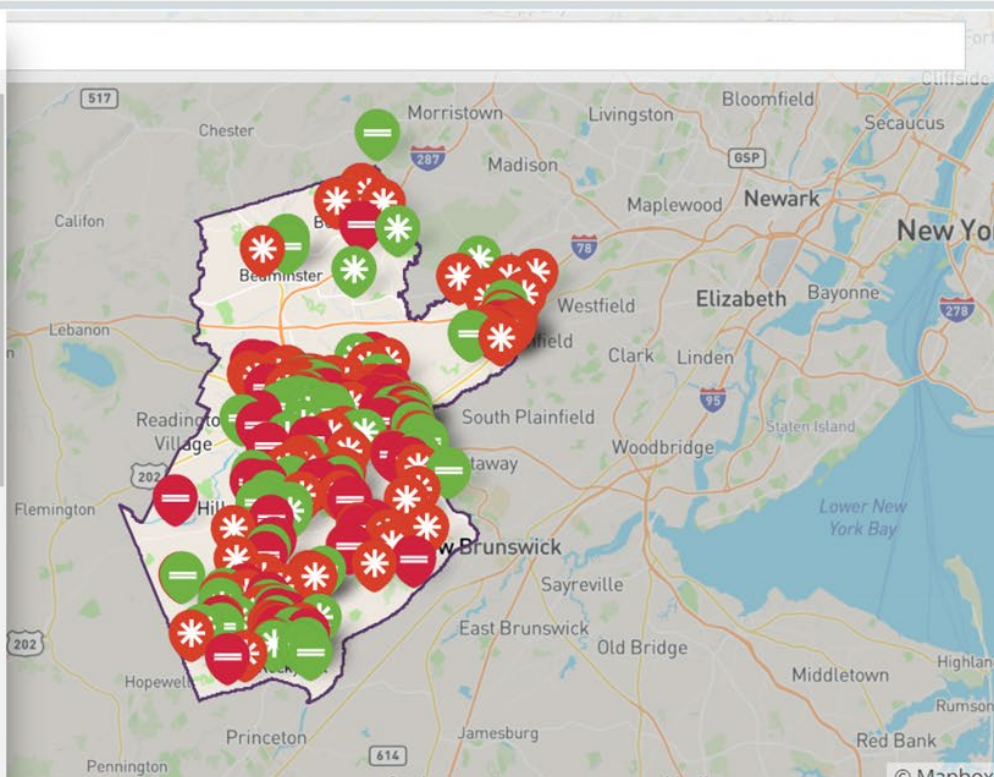
- Drag to comment >
- Problem Area (Points)
  - Problem Corridor (Lines)
  - Area Opportunities (Points)
  - Corridor Opportunities (Lines)

**About**

View the video below for a tutorial on this interactive map activity.

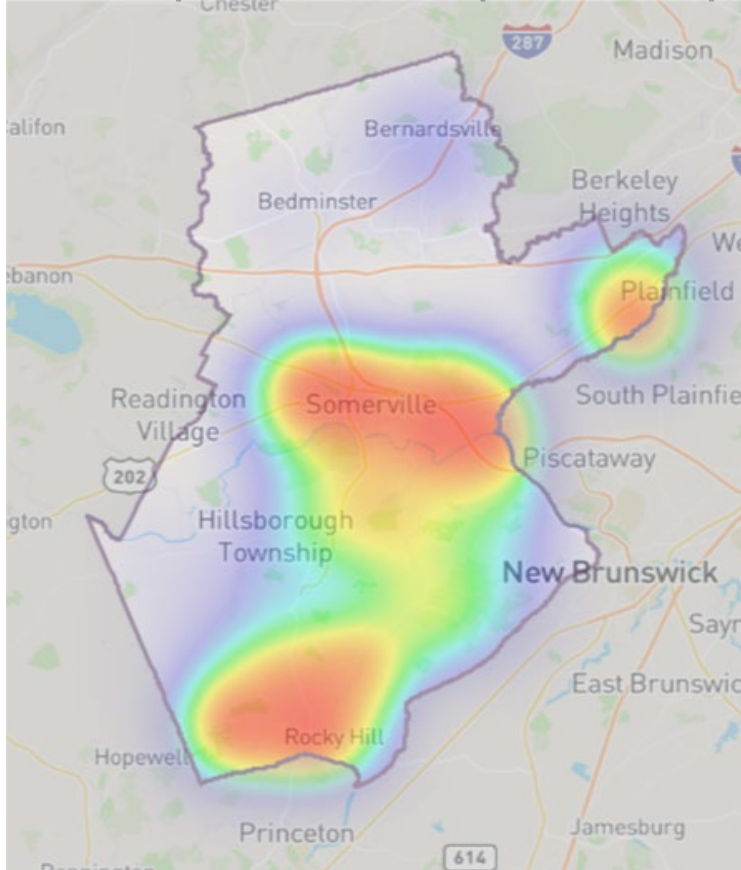


Somerset County is creating a Transportation Plan that will guide transportation policies and infrastructure investment, and establish a shared vision for transportation in Somerset County over the next 20

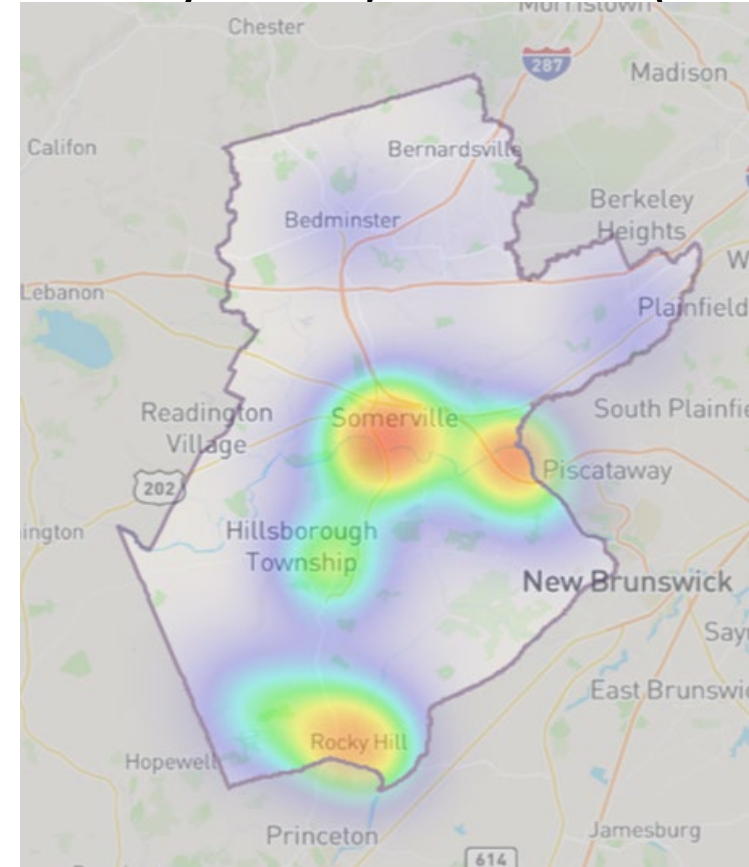


# Interactive Map: Heat Maps

Problem Areas/Corridors (heat map)



Opportunity Areas/Corridors (heat map)





# Key Takeaways from Engagement

1. More transit
2. Enhanced connectivity for walking and bicycling  
(first/last mile; downtowns; shopping; schools; parks)
3. Increased truck traffic and conflicts at rail crossings
4. Need to prepare for storms and weather events
5. Improve information and traveler experience
6. Changes in travel patterns

# Key Themes from Engagement



A word cloud of key themes from engagement. The words are arranged in a roughly circular pattern, with 'safe' at the top and 'convenient' at the bottom. The words are in various colors and sizes, with 'safe' being the largest and most prominent. Other large words include 'connected', 'integrated', 'equitable', and 'multimodal'. Smaller words include 'user-friendly', 'flexible', 'family-friendly', 'accessible', 'healthy', 'seamless', 'smart', 'innovative', 'efficient', 'affordable', and 'choices'.

safe  
user-friendly  
flexible equitable family-friendly  
healthy integrated accessible  
connected  
seamless smart multimodal  
innovative  
efficient choices affordable  
convenient

# Draft Vision Statement

Create a safe, comfortable, sustainable, resilient, and connected transportation system that addresses climate change risks and is coordinated with land use decision making. Keep Somerset Moving enhances mobility for users of all travel modes and incorporates equity throughout the planning, prioritization, project selection, community outreach, design, construction, and maintenance of projects.





# Poll Question 4

How do you feel about the draft Vision Statement?

1. It's excellent
2. It's good
3. It's fair
4. It's poor
5. I'm unsure

*What would you change/add to the Vision Statement? Tell us in the chat.*

# Breakout Room Discussion

## Help us understand ...

- How well the transportation system in Somerset County meets your needs
- How the current system can be improved
- Your vision for the future

## Topics may include ...

- Education, health, and opportunity
- Safety and social equity
- Environmental resilience and sustainability
- Freight and E-Commerce
- Transportations systems
- Economic development, business, job creation
- Tourism
- Land Use
- Pedestrian, bicycle, and public transit
- And others

# Discussion Topic 1

What **transportation challenges** do you typically experience?

What **barriers** (safety, mobility, others) affect your daily life the most?



# Discussion Topic 2

**How would you improve Somerset County's transportation system?**

**What are your top priorities?**



# Your Vision of Somerset's Future

Give us one word or sentence that describes...

Your vision for the future of transportation in Somerset County





# Breakout Discussion Summary

Here's what we heard...

- Key issues and concerns
- Top priorities and ideas for improvement
- Your Vision for the Future



# Q&A

Submit your questions/comments  
in the chat box

OR

Raise your hand and we will call on you

Utilice el cuadro "Chat" para comentarios generales y preguntas

o

Use la función "Raise Hand" en el botón "Reactions" durante la  
discusión si desea hablar



# Next Steps

- Draft findings and recommendations (Spring 2023)
- Public survey 2 (May/June)
- Public meeting 2 (Summer)
- Final plan (Fall)



# How to Continue Participating ...

E-mail:

[KeepSomersetMoving@co.somerset.nj.us](mailto:KeepSomersetMoving@co.somerset.nj.us)

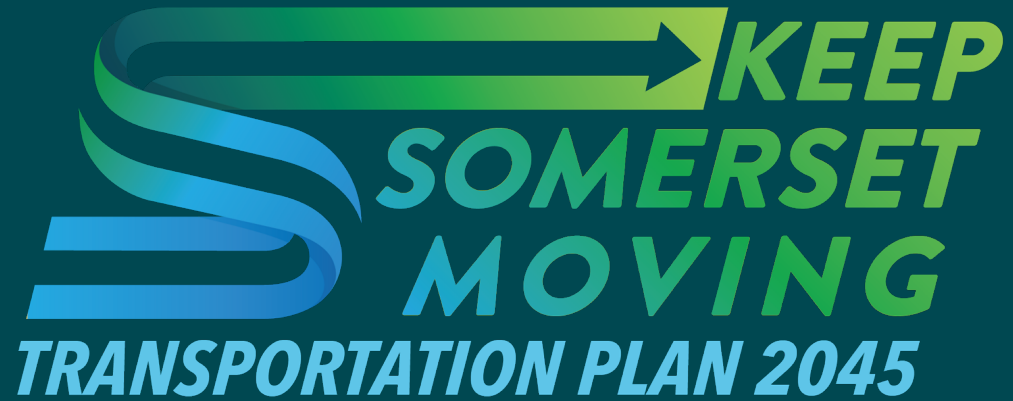
Phone:

(908) 231-7021

Visit the Project Website

<https://www.co.somerset.nj.us/government/public-works/planning-policy-and-economic-development/2022-transportation-update-3109>





# Somerset County Contacts

Please contact our Co-Project Managers Adam Bradford and Kenneth Wedeen at:  
[KeepSomersetMoving@co.somerset.nj.us](mailto:KeepSomersetMoving@co.somerset.nj.us)