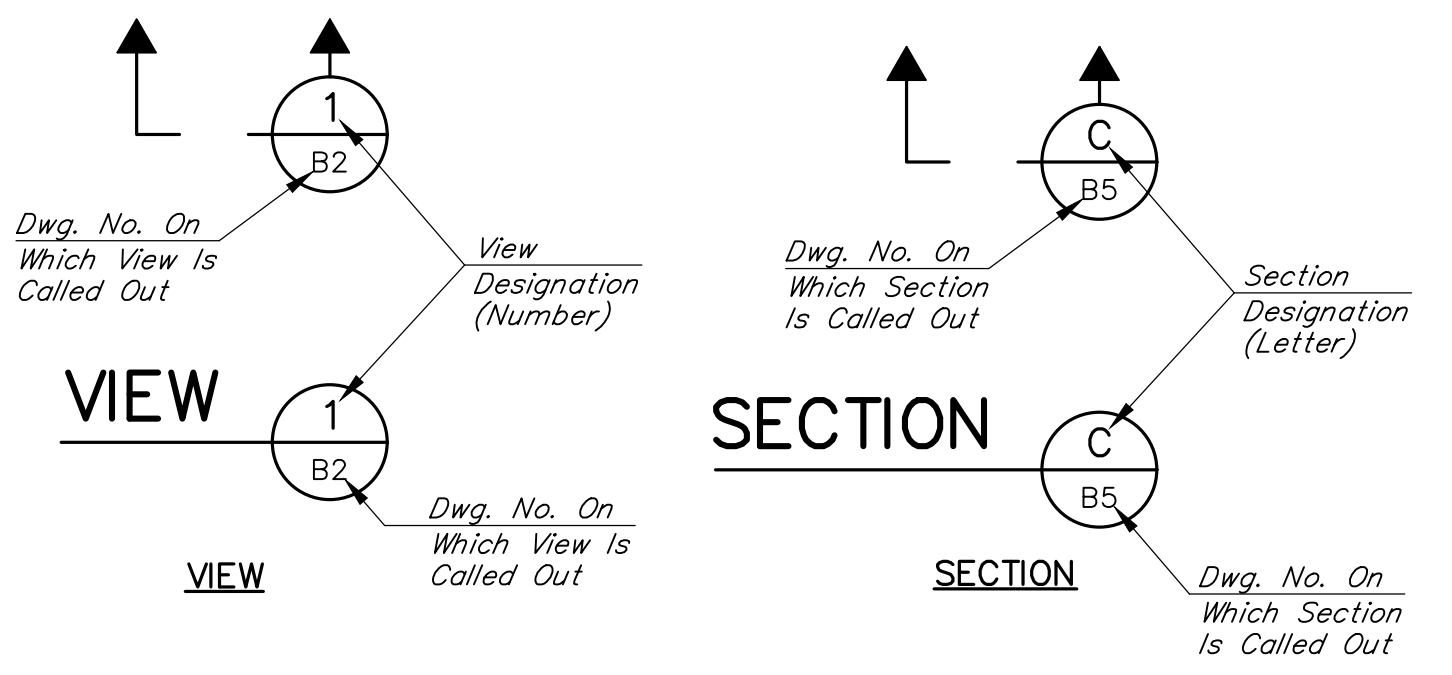
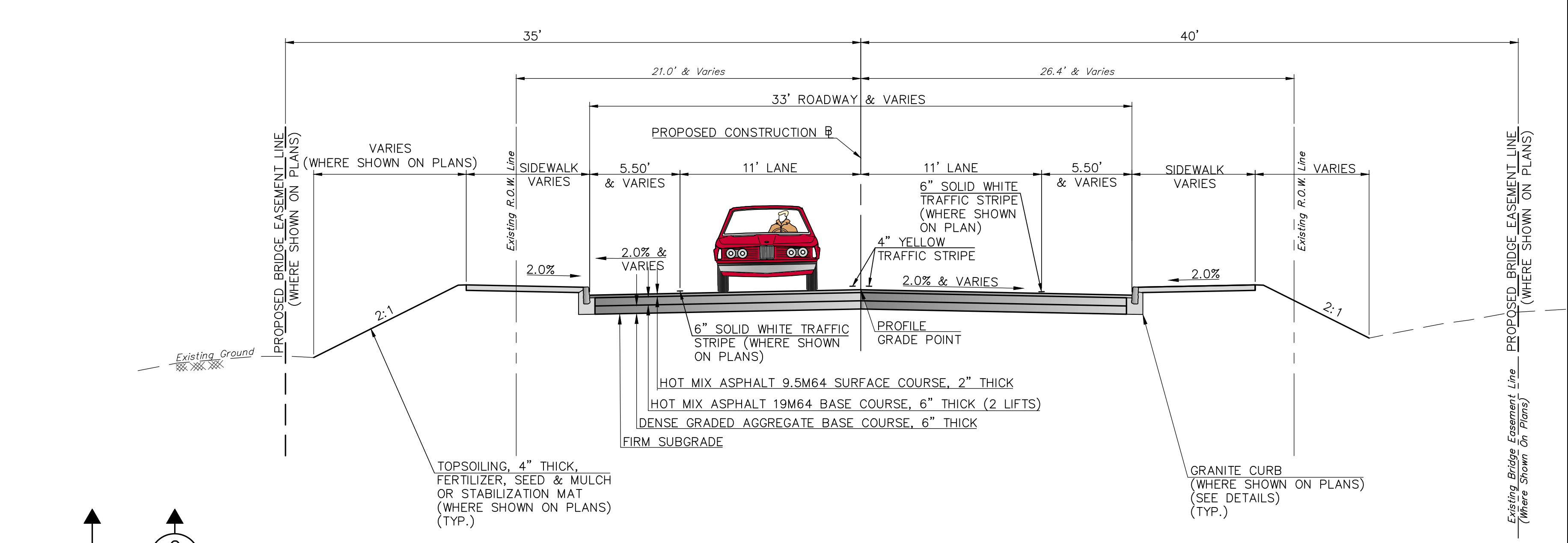
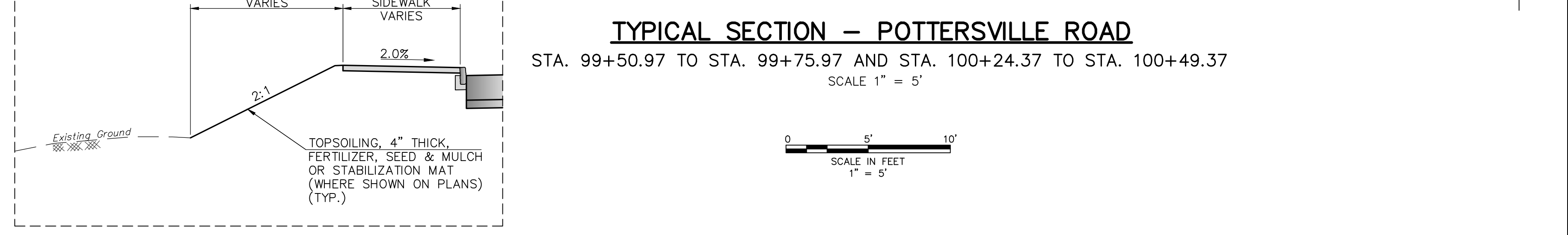
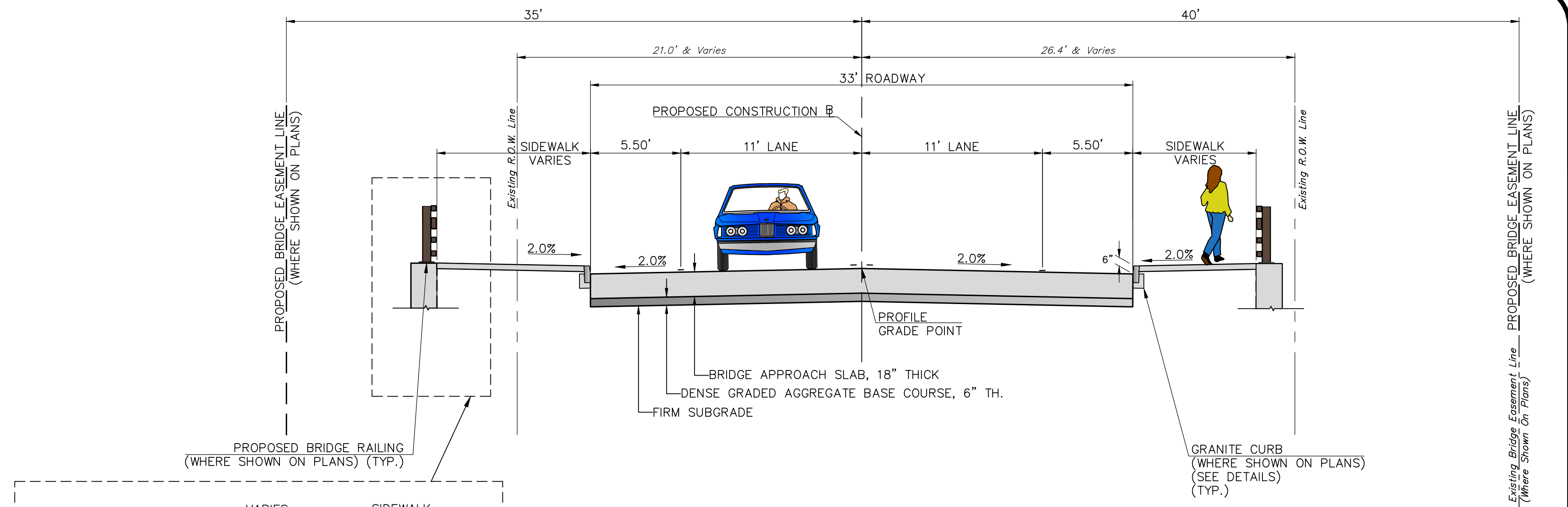
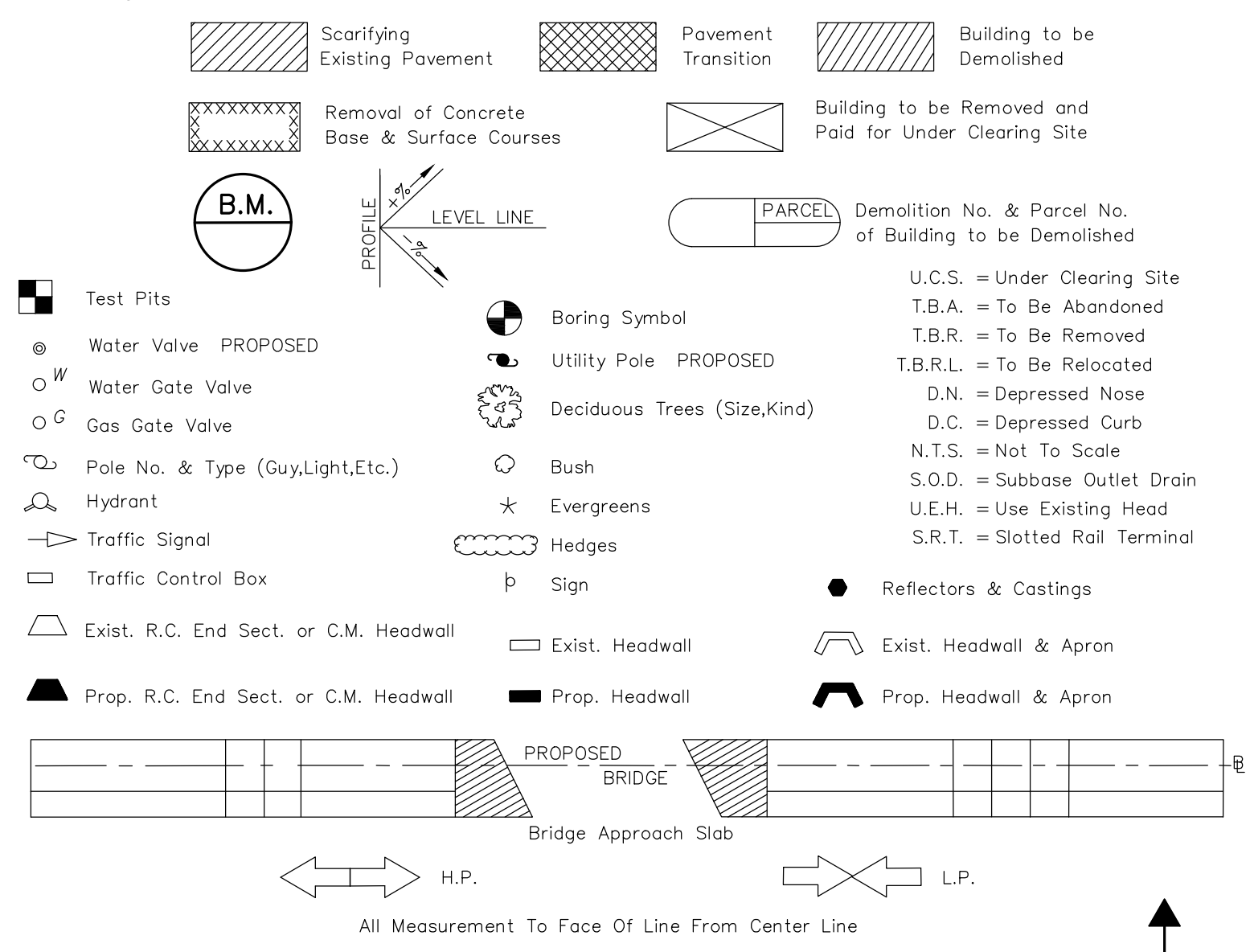
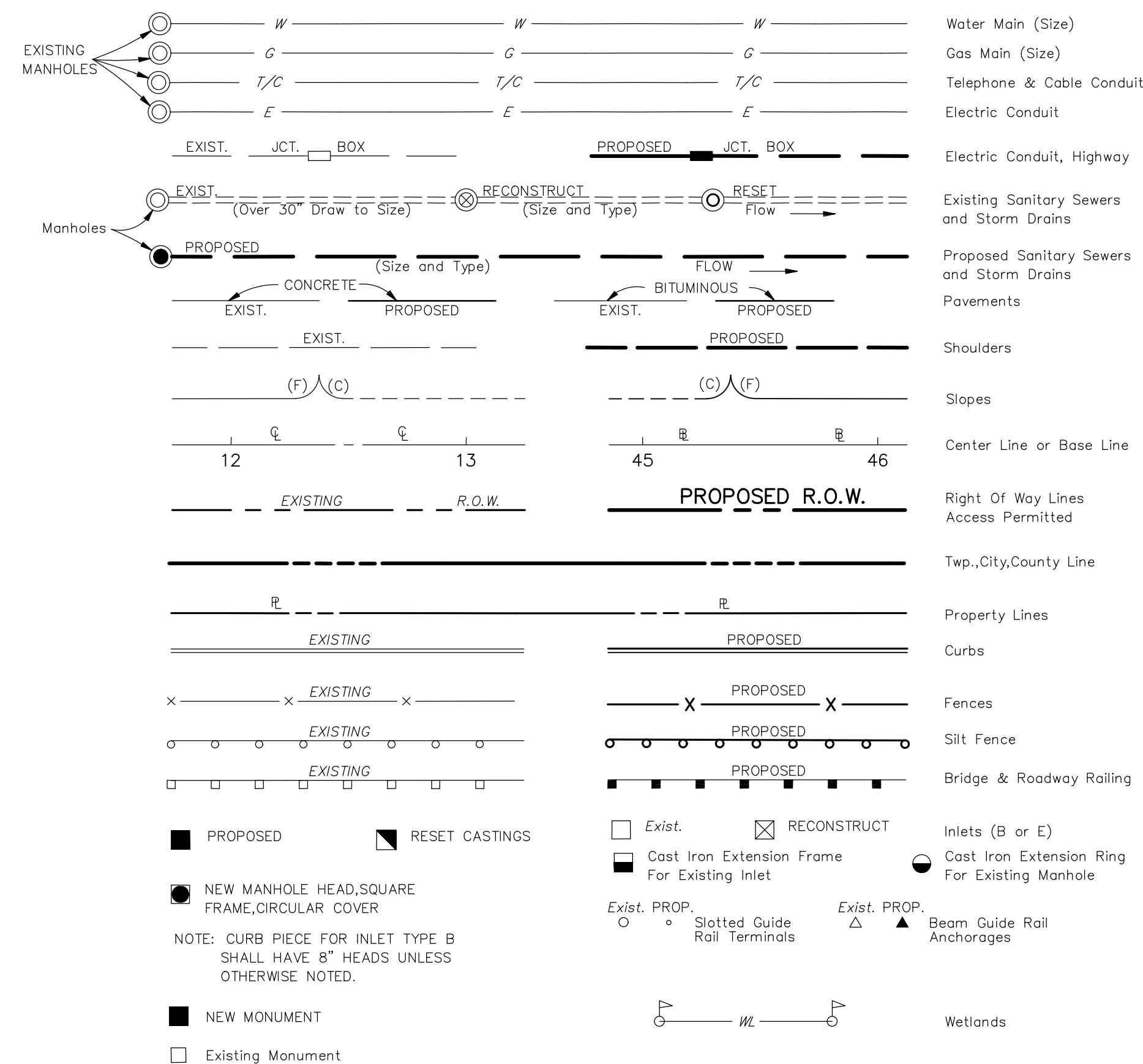


# STANDARD LEGEND



## DRAWING REFERENCES

NOTE: NOT TO SCALE  
 No Drawing Number Is Given If The View Or Section And Its Corresponding Call-Out Are Located On The Same Sheet.

DATE:	OCTOBER 2023
SCALE:	AS SHOWN
DESIGNED BY:	JJM
DRAWN BY:	JJM
CHECKED BY:	PWO
JOB NO.:	NJ-S-PG-103

**PRELIMINARY**  
 PUBLIC INFORMATION CENTER - NOVEMBER 15, 2023  
**PETER W. OLIEMAN, P.E.**  
 NEW JERSEY PROFESSIONAL ENGINEER LICENSE NUMBER 24GE03096300

**Van Cleaf**  
 ENGINEERING WITH FOCUS

**Van Cleaf Engineering Associates, LLC**  
 755 MEMORIAL PKWY, SUITE 110, PHILADELPHIA, NJ 08126  
 WEB: WWW.VANCLEEFENGINEERING.COM  
 PHONE: (908) 454-3000  
 CERT. OF AUTHORIZATION NO. 24GA2812300

Bridges/Highways  
 Construction Inspection  
 Environmental  
 Geotechnical/Dams  
 Landscape Architecture  
 Local/Regional Planning  
 Municipal Engineering  
 Site Development  
 Surveying/Aerial Drones/GIS  
 Water/Wastewater

**LEGEND & TYPICAL SECTIONS**  
**REPLACEMENT OF COUNTY BRIDGE D1302**  
**POTTERSVILLE ROAD (CR 512)**  
**OVER PEAPACK BROOK**  
 PEAPACK & GLADSTONE BOROUGH  
 SOMERSET COUNTY, NEW JERSEY

F:\Projects\11-5-PG-103\Drawings\11-5-PG-103-DWG\11-5-PG-103-DWG.dwg element:10/27/2023 12:28:48 PM