

New Jersey Conservation POSTER CONTEST



2024

Prizes for
Statewide

Competition

1st Place \$100

2nd Place \$50

3rd Place \$25



The New Jersey
Conservation Poster
Contest is open to all
students in grades 2-12
and students compete
in grade categories.
Local Soil Conservation
District prizes may also
be awarded!

Contest Sponsors:

The NJ Department of Agriculture,
the NJ Association of Conservation Districts, and
your local Soil Conservation District



The Poster Contest is open to all students in grades 2-12 — public, private, home schooled and youth groups included.

Why Participate ?

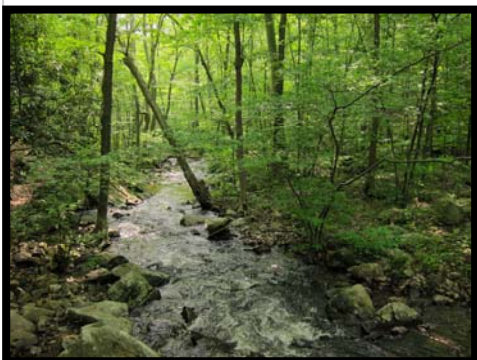
Designing a poster and researching the theme can give you a voice in your community about important conservation issues. Good posters capture people’s attention and deliver stories in a way that everyone can understand. A powerful graphic can inspire people to be concerned about conservation.

Information Resources: *One Water*

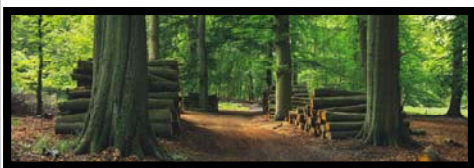
You will want to learn all you can about the important role forests play in your everyday life. Forests cover nearly a third of all land on Earth, providing vital organic infrastructure for some of the planet's densest, most diverse collections of life. They support countless species, including our own, yet we often seem oblivious of that. Humans now clear millions of acres from natural forests every year, especially in the tropics, letting deforestation threaten some of Earth's most valuable ecosystems. Have you ever heard the saying, “You can’t see the forest for the trees?” There is a lot of truth to that statement because when we look at a forest we tend to see only trees because they dominate the scene, but they don’t dominate when it comes to the number of species. There are hundreds of thousands of species of plants and animals in a single forest ecosystem. More than you can imagine... plants, mosses, fungi, animals, insects and millions of micro-organisms.

Web Resources:

- <https://www.nj.gov/dep/parksandforests/forest/urbanandcommunity/>
- <https://www.nj.gov/dep/parksandforests/forest/>
- <https://www.americanforests.org/>
- <https://www.fs.usda.gov/>
- <https://forests.org/>
- <https://njforestry.org/>
- <https://www.nacdnet.org/about-nacd/what-we-do/forestry/>
- <https://www.epa.gov/nps/nonpoint-source-forestry>
- <https://www.forestryimages.org/>
- <https://www.stateforesters.org/districts/new-jersey/>
- <https://www.nacdnet.org/conservation-education-hub/curriculum-3/>



Red Oak: NJ State Tree



DID YOU KNOW.....

- ◆ Forests are home to over 80 percent of land animals and plants and cover 31 percent of the world’s total land area.
- ◆ A tree can sequester up to 150 kilograms of carbon dioxide per year.
- ◆ Trees are important for creating sustainable cities: in urban areas, they can cool the air by up to 8 degrees, reducing air conditioning needs by 30 percent.
- ◆ More than 25 percent of the medicines we use originate in rainforest plants.
- ◆ A large oak tree can transpire 151,000 liters of water in a year.
- ◆ More than one third of our biggest cities, including New York, Bogota, Tokyo and Barcelona, get a significant proportion of their high-quality drinking water from protected forests.
- ◆ Using wood for construction saves about 40 percent of carbon emissions in comparison to concrete, and about 30 percent in comparison to steel.
- ◆ Wood fuel provides 40 percent of today's global renewable energy supply.

NJ Soil Conservation Districts (SCD) are special purpose subdivisions of the State. In cooperation with the State Soil Conservation Committee, they are empowered to conserve and manage soil and water resources and address stormwater, soil erosion and sedimentation problems that result from land disturbance activities. There are 14 Soil Conservation Districts in New Jersey. (See back page for list.)

In response to growing public concern for water quality, NJ conservation districts have become the primary local governmental agencies responsible for monitoring nonpoint sources of pollution associated with agriculture, construction and mining. The technical services of the USDA, Natural Resources Conservation Service and other resource agencies are made available through the districts.

Online Tips for Creating an Effective Poster

The National Association of Conservation Districts at www.nacdnet.org provides links to assist with creating posters. Click on the “Stewardship & Education” tab and find “Poster Contest” under “Contests” for an overview of the 2024 theme, and for tips on what makes a good poster and the National Visual Arts Standards.

New Jersey Rules

These rules must be followed for your poster to be accepted by your local Soil Conservation District. Entries that do not conform to the rules will not be judged.

Please review and follow your local Soil District rules for the deadline!

1. Clearly print your name and information on the entry form **AND** tape the completed entry form to the back of your poster.
2. Tape a 1-3 sentence explanation of your poster, neatly written on a 3" x 5" or 4" x 6" index card, to the back of the poster. Be sure to write your name and county on the index card.
3. **Contest theme "May the Forest Be with You, Always" must appear somewhere in your poster.** Leave a 1 inch border of white space at the edges of the poster; lettering should not run on to the edges.
4. The poster must be flat, no 3-D objects.
5. Poster size must be between 8.5" x 11" and 22" x 28".
6. Any medium may be used including paint, crayons, colored pencils, charcoal, paper or other materials. No collage or montage.
7. One poster per student.
8. The poster must be the original artwork of the student.
9. **ENTRY DEADLINE: See Local District Rules**
10. Decisions of the judges are final and all entries become the property of the contest sponsors.

Poster Evaluations

Posters will be judged on the following criteria: Relevance to contest theme: **"May the Forest Be with You, Always"**

- Conservation message
- Visual effectiveness
- Originality
- Overall appeal

CASH PRIZES for the New Jersey Statewide competition are awarded by the:

New Jersey Association of Conservation Districts

First - \$100 Second - \$50 Third - \$25

Local District Rules & Prizes

Contact your local district to verify participation (Page 4)

**ENTRY
DEADLINES:**

APRIL 15th, 2024



**New Jersey Association
of
Conservation
Districts**

<http://www.njacd.org/>



NEW JERSEY SOIL CONSERVATION DISTRICTS

Please contact your local SCD to verify their participation!

Bergen County SCD

700 Kinderkamack Rd. Ste 106
Oradell, NJ 07649
(201) 261-4407
www.bergenscd.org

Burlington County SCD

1971 Jacksonville Jobstown Rd.
Columbus, NJ 08022
(609) 267-7410
www.bsacd.org

Camden County SCD

408 Commerce Lane
W. Berlin, NJ 08091
(856) 767-6299
www.camdenscd.org

Cape-Atlantic SCD

Atlantic County Office Bldg.
6260 Old Harding Highway
Mays Landing, NJ 08330
(609) 625-3144
www.capeatlantic.org

Cumberland-Salem SCD

P. O. Box 68
1516 Route 77
Deerfield, NJ 08313
(856) 451-2422
www.cumberlandsalemsoil.com

Freehold SCD

(Monmouth & Middlesex Counties)
4000 Kozloski Rd., Suite 5
Freehold, NJ 07728
(732) 683-8500
www.freeholdsoil.org
info@freeholdscd.org

Gloucester County SCD

14 Parke Place, Suite B
Sewell, NJ 08080
(856) 589-5250
gloucester@gloucesterscd.org
www.gloucesterscd.org

Hudson, Essex, Passaic SCD

80 Orchard St
Bloomfield, NJ 07003
(862) 333-4505
information@hepscd.org

Hunterdon County SCD

687 Pittstown Road
Frenchtown, NJ 08825
(908) 788-9466
hcscd687@embarqmail.com

Mercer County SCD

590 Hughes Drive
Hamilton Square, NJ 08690
(609) 586-9603
www.mercerscd.org

Morris County SCD

Court House, P.O. Box 900
Morristown, NJ 07960-0900
(973) 285-2953
www.mcscd.org

Ocean County SCD

714 Lacey Road
Forked River, NJ 08731
(609) 971-7002
www.soildistrict.org

Somerset-Union SCD

Somerset County
308 Milltown Road 4-H Bldg.
Bridgewater, NJ 08807
(908) 526-2701
soilconservation@co.somerset.nj.us

Upper Delaware SCD

(Warren & Sussex Counties)
P.O. Box 198
51 Main Street, Suite B
Blairstown, NJ 07825
(908) 852-2579
www.upperdelawarescd-nj.com



2024 Poster Contest Entry Form

Attach this form to back of each poster



Circle Your Grade Category: 2nd—3rd 4th—6th 7th—9th 10th—12th

Your County Soil Conservation District: (see above) _____

Student Name: _____ Grade: _____

Home Address: _____

Town: _____ NJ Zip Code: _____

Phone: _____

Winners will be notified by email, if possible. Please neatly print a suitable email address:

If your poster was created through a school project or assignment please complete teacher & school information.

Teacher Name: _____

School Name: _____

School Address: _____

Town: _____ NJ Zip Code: _____

Phone: _____

Email: _____

I certify that this poster is the original artwork of the student named above. Parent OR Teacher Must Sign.

Signature Parent OR Teacher

Student Signature