



Premium Affordable Apartment Homes Income Restrictions Apply

Located in Marlton, NJ this exciting community offers premium one, two and three-bedroom apartment homes. Situated in the heart of Burlington County, residents have access to everyday conveniences onsite and in the local area.

Upgraded Features & Amenities

- Full-size Washer & Dryer in each residence
- Fully equipped Kitchen with Granite Countertops
- Secured Individual Key Fob Access
- On-site Management & Maintenance
- Social Services Contact
- Resident Portal Accounts
- Clubhouse & Fitness center
- Outdoor BBQ & Picnic area
- Tot lot & much more

*Income restrictions apply.

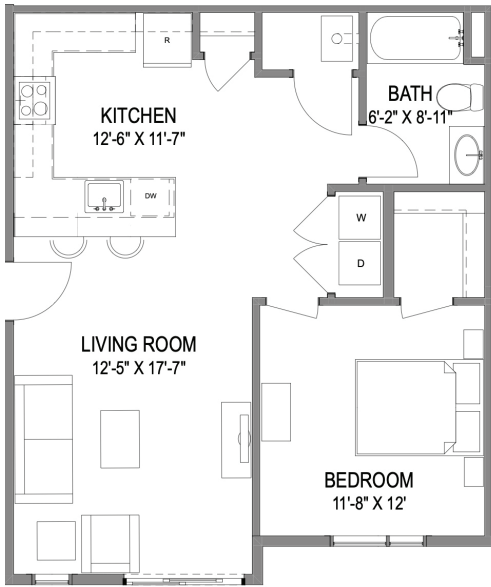


Discover Cornerstone Communities

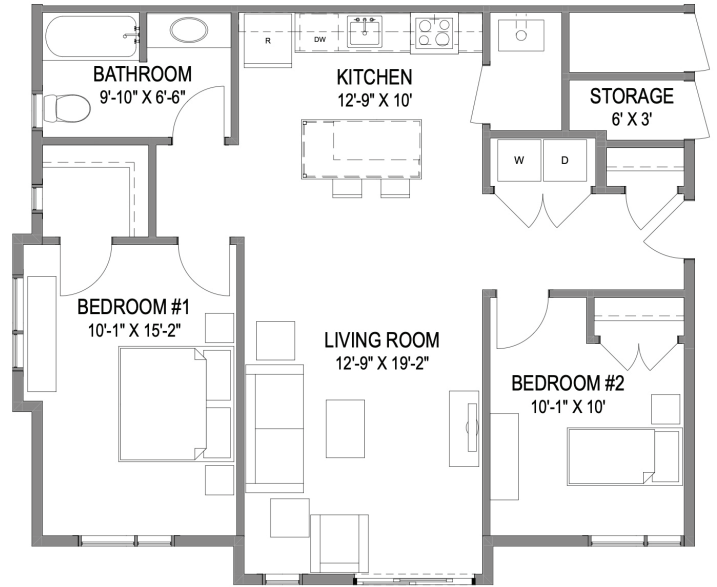
Premium Affordable Apartment Homes

For more information, call 856.985.4599

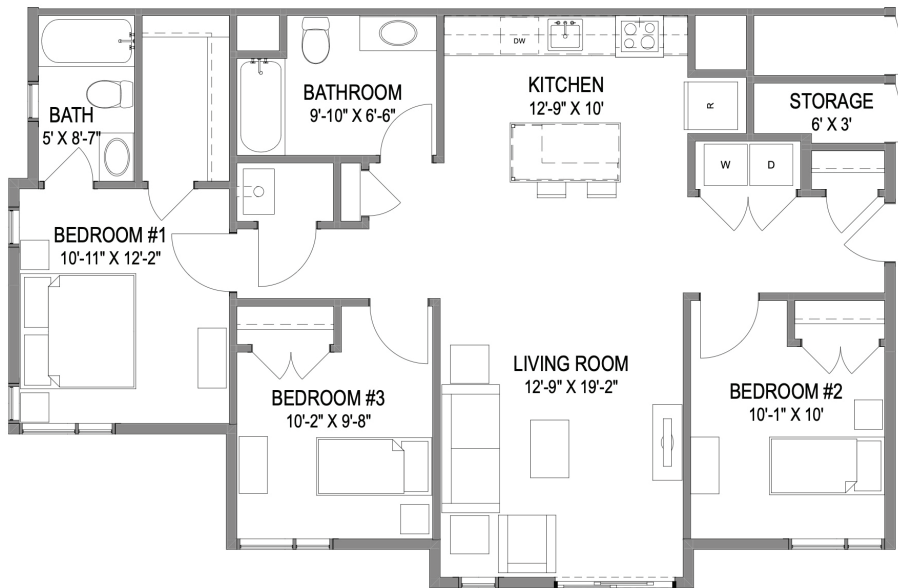
1 Bedroom | 649 Sq. Ft.



2 Bedroom | 897 Sq. Ft.



3 Bedroom | 1,123 Sq. Ft.



Visit wgaps.com to see more floorplan options.