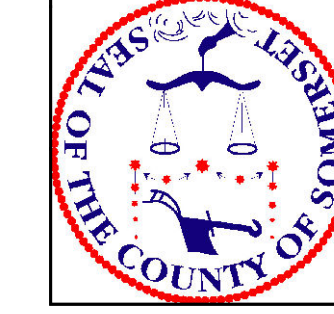
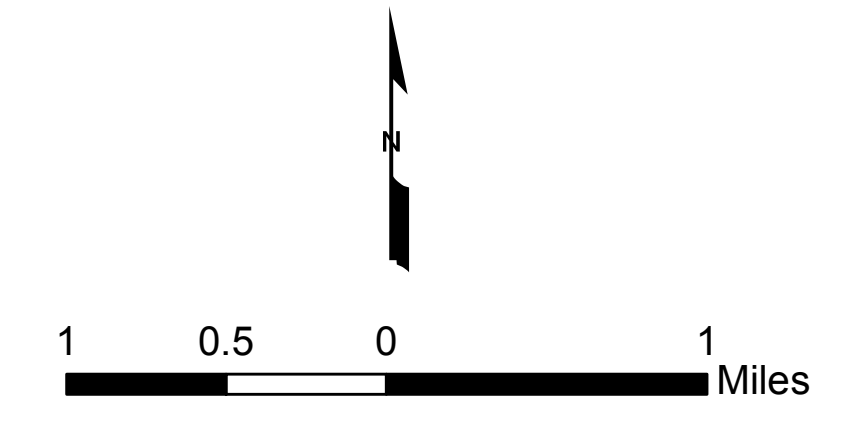


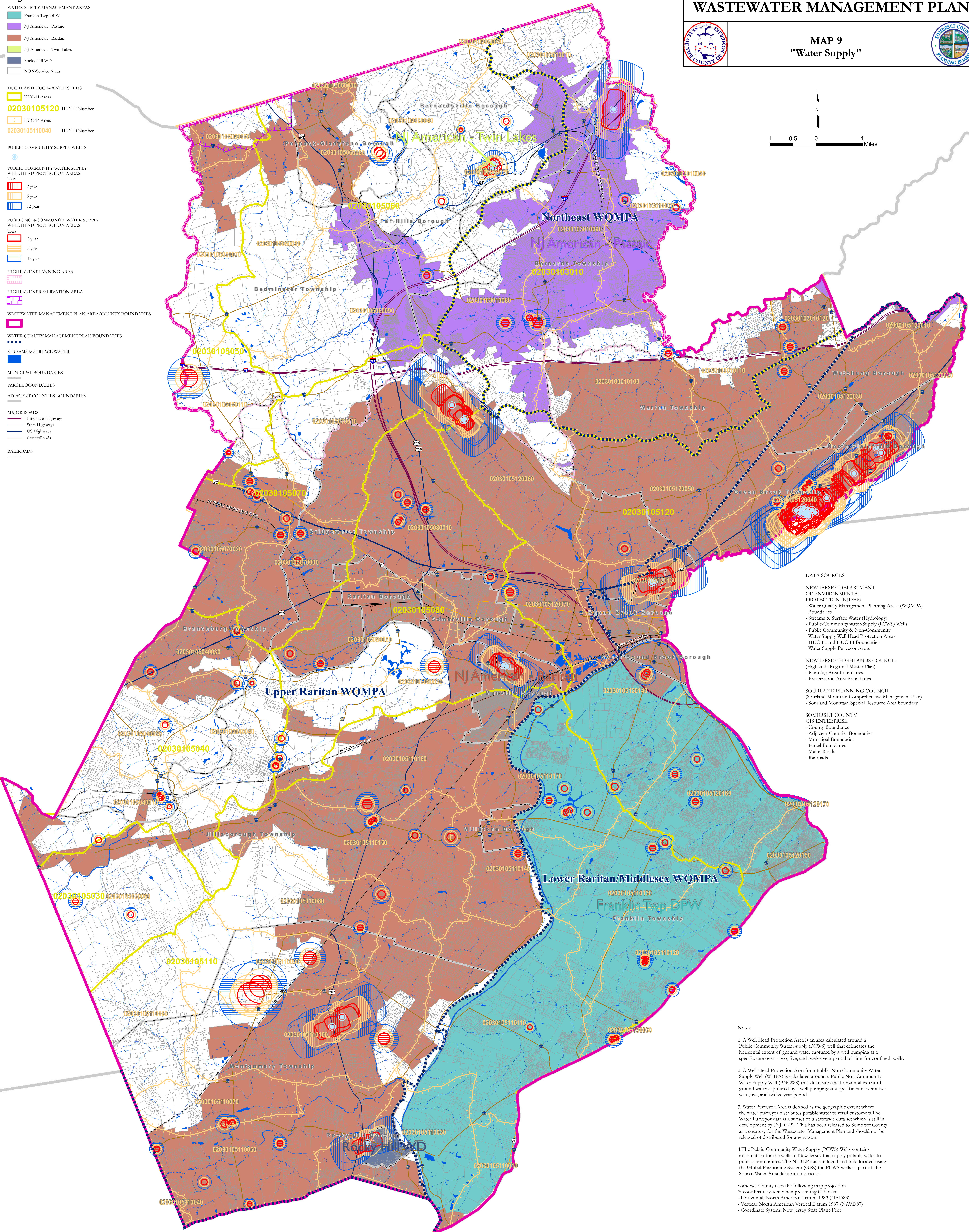
SOMERSET COUNTY, NJ
WASTEWATER MANAGEMENT PLAN



MAP 9
"Water Supply"



- Legend**
- WATER SUPPLY MANAGEMENT AREAS**
- Franklin Twp DPW
 - NJ American - Passaic
 - NJ American - Raritan
 - NJ American - Twin Lakes
 - Rocky Hill WD
 - NON-Service Areas
- HUC 11 AND HUC 14 WATERSHEDS**
- HUC-11 Areas
 - 02030105120 HUC-11 Number
 - HUC-14 Areas
 - 02030105110040 HUC-14 Number
- PUBLIC COMMUNITY SUPPLY WELLS**
- PUBLIC COMMUNITY WATER SUPPLY WELL HEAD PROTECTION AREAS**
- 2 year
 - 5 year
 - 12 year
- PUBLIC NON-COMMUNITY WATER SUPPLY WELL HEAD PROTECTION AREAS**
- 2 year
 - 5 year
 - 12 year
- HIGHLANDS PLANNING AREA**
- HIGHLANDS PRESERVATION AREA**
- WASTEWATER MANAGEMENT PLAN AREA/COUNTY BOUNDARIES**
- WATER QUALITY MANAGEMENT PLAN BOUNDARIES**
- STREAMS & SURFACE WATER**
- MUNICIPAL BOUNDARIES**
- PARCEL BOUNDARIES**
- ADJACENT COUNTIES BOUNDARIES**
- MAJOR ROADS**
- Interstate Highways
 - State Highways
 - US Highways
 - County Roads
- RAILROADS**



- DATA SOURCES**
- NEW JERSEY DEPARTMENT OF ENVIRONMENTAL PROTECTION (NJDEP)**
- Water Quality Management Planning Areas (WQMPA) Boundaries
 - Streams & Surface Water (Hydrology)
 - Public-Community water-Supply (PCWS) Wells
 - Public-Community & Non-Community Water Supply Well Head Protection Areas
 - HUC 11 and HUC 14 Boundaries
 - Water Supply Purveyor Areas
- NEW JERSEY HIGHLANDS COUNCIL (Highlands Regional Master Plan)**
- Planning Area Boundaries
 - Preservation Area Boundaries
- SOURLAND PLANNING COUNCIL (Sourland Mountain Comprehensive Management Plan)**
- Sourland Mountain Special Resource Area boundary
- SOMERSET COUNTY GIS ENTERPRISE**
- County Boundaries
 - Adjacent Counties Boundaries
 - Municipal Boundaries
 - Parcel Boundaries
 - Major Roads
 - Railroads

- Notes:**
1. A Well Head Protection Area is an area calculated around a Public Community Water Supply (PCWS) well that delineates the horizontal extent of ground water captured by a well pumping at a specific rate over a two, five, and twelve year period of time for confined wells.
 2. A Well Head Protection Area for a Public-Non-Community Water Supply Well (PNCWS) that delineates the horizontal extent of ground water captured by a well pumping at a specific rate over a two, five, and twelve year period.
 3. Water Purveyor Area is defined as the geographic extent where the water purveyor distributes potable water to retail customers. The Water Purveyor data is a subset of a statewide data set which is still in development by (NJDEP). This has been released to Somerset County as a courtesy for the Wastewater Management Plan and should not be released or distributed for any reason.
 4. The Public-Community Water-Supply (PCWS) Wells contains information for the wells in New Jersey that supply potable water to public communities. The NJDEP has cataloged and field located using the Global Positioning System (GPS) the PCWS wells as part of the Source Water Area delineation process.

Somerset County uses the following map projection & coordinate system when presenting GIS data:

- Horizontal: North American Datum 1983 (NAD83)
- Vertical: North American Vertical Datum 1987 (NAVD87)
- Coordinate System: New Jersey State Plane Feet