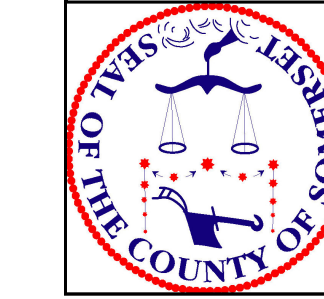
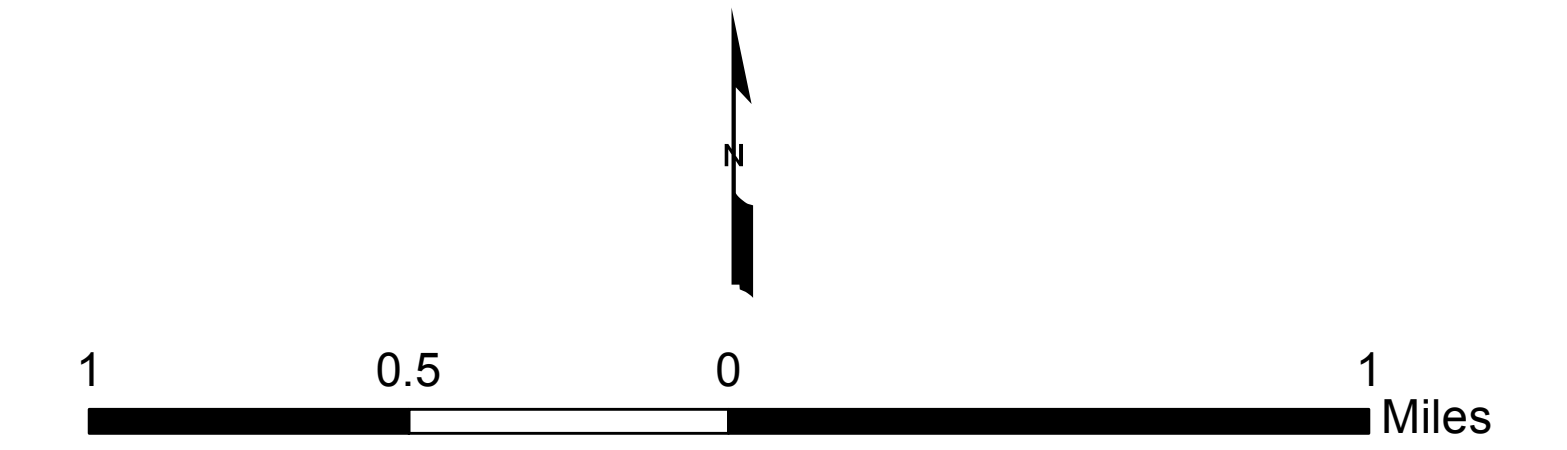


SOMERSET COUNTY, NJ
WASTEWATER MANAGEMENT PLAN



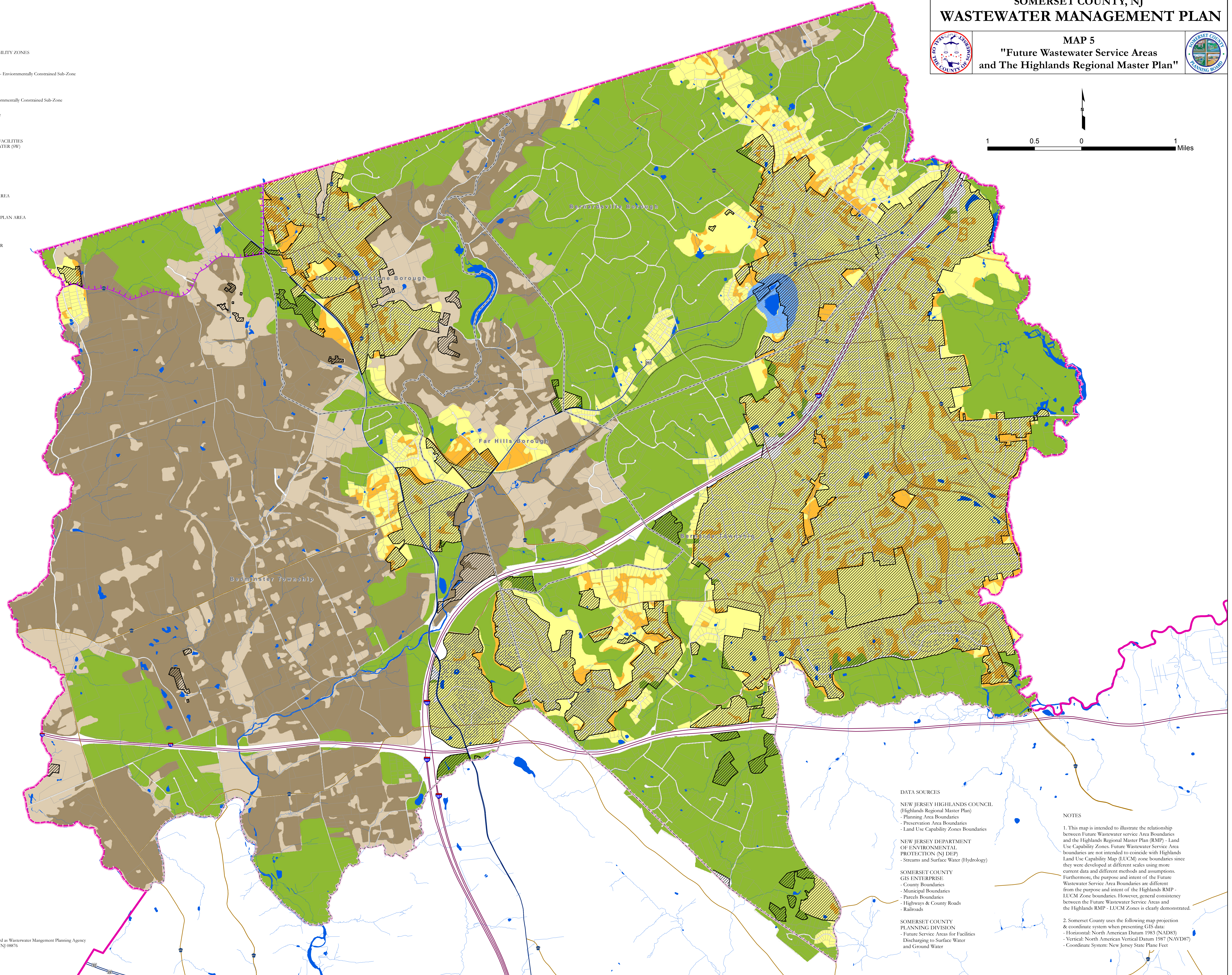
MAP 5
**"Future Wastewater Service Areas
 and The Highlands Regional Master Plan"**



Legend

- HIGHLANDS LAND USE CAPABILITY ZONES**
- Existing Community Zone
 - Existing Community Zone - Environmentally Constrained Sub-Zone
 - Conservation Zone
 - Conservation Zone - Environmentally Constrained Sub-Zone
 - Lake Community Sub-Zone
 - Protection Zone
- FUTURE SERVICE AREAS FOR FACILITIES DISCHARGING TO SURFACE WATER (SW) AND GROUNDWATER (GW)***
- HIGHLANDS PLANNING AREA**
- HIGHLANDS PRESERVATION AREA**
- WASTEWATER MANAGEMENT PLAN AREA /COUNTY BOUNDARIES**
- STREAMS AND SURFACE WATER**
- MUNICIPAL BOUNDARIES**
- PARCEL BOUNDARIES**
- MAJOR ROADS**
- Interstate Highways
 - State Highways
 - US Highways
 - County Roads
- RAILROADS**

* Area not within Future Service Area are to be served by Individual Subsurface Sewage Disposal Systems within Planning Flow of 2,000 GPD or less (BS206)



- DATA SOURCES**
- NEW JERSEY HIGHLANDS COUNCIL**
 (Highlands Regional Master Plan)
 - Planning Area Boundaries
 - Preservation Area Boundaries
 - Land Use Capability Zones Boundaries
- NEW JERSEY DEPARTMENT OF ENVIRONMENTAL PROTECTION (NJ DEP)**
 - Streams and Surface Water (Hydrology)
- SOMERSET COUNTY GIS ENTERPRISE**
 - County Boundaries
 - Municipal Boundaries
 - Parcels Boundaries
 - Highways & County Roads
 - Railroads
- SOMERSET COUNTY PLANNING DIVISION**
 - Future Service Areas for Facilities Discharging to Surface Water and Ground Water

- NOTES**
1. This map is intended to illustrate the relationship between Future Wastewater service Area Boundaries and the Highlands Regional Master Plan (RMP) - Land Use Capability Zones. Future Wastewater Service Area boundaries are not intended to coincide with Highlands Land Use Capability Map (LUCM) zone boundaries since they were developed at different scales using more current data and different methods and assumptions. Furthermore, the purpose and intent of the Future Wastewater Service Area Boundaries are different from the purpose and intent of the Highlands RMP - LUCM Zone boundaries. However, general consistency between the Future Wastewater Service Areas and the Highlands RMP - LUCM Zones is clearly demonstrated.
 2. Somerset County uses the following map projection & coordinate system when presenting GIS data:
 - Horizontal: North American Datum 1983 (NAD83)
 - Vertical: North American Vertical Datum 1987 (NAVD87)
 - Coordinate System: New Jersey State Plane Feet