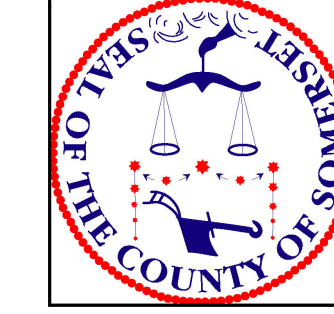
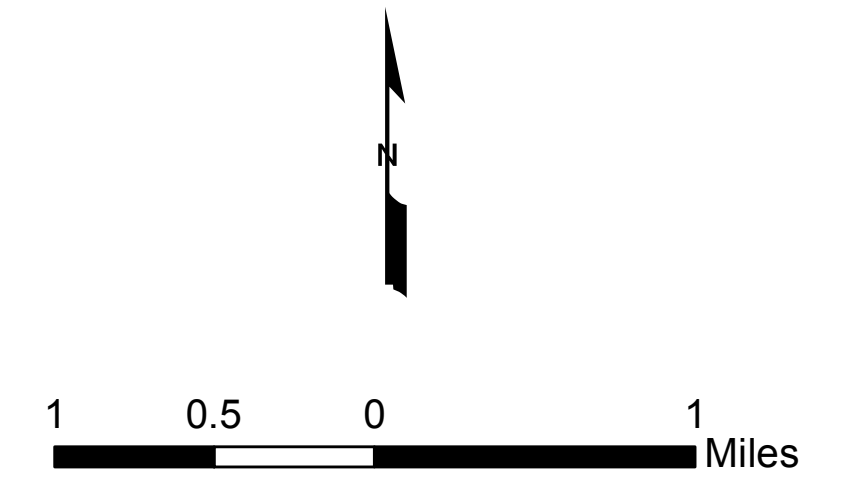


SOMERSET COUNTY, NJ
WASTEWATER MANAGEMENT PLAN

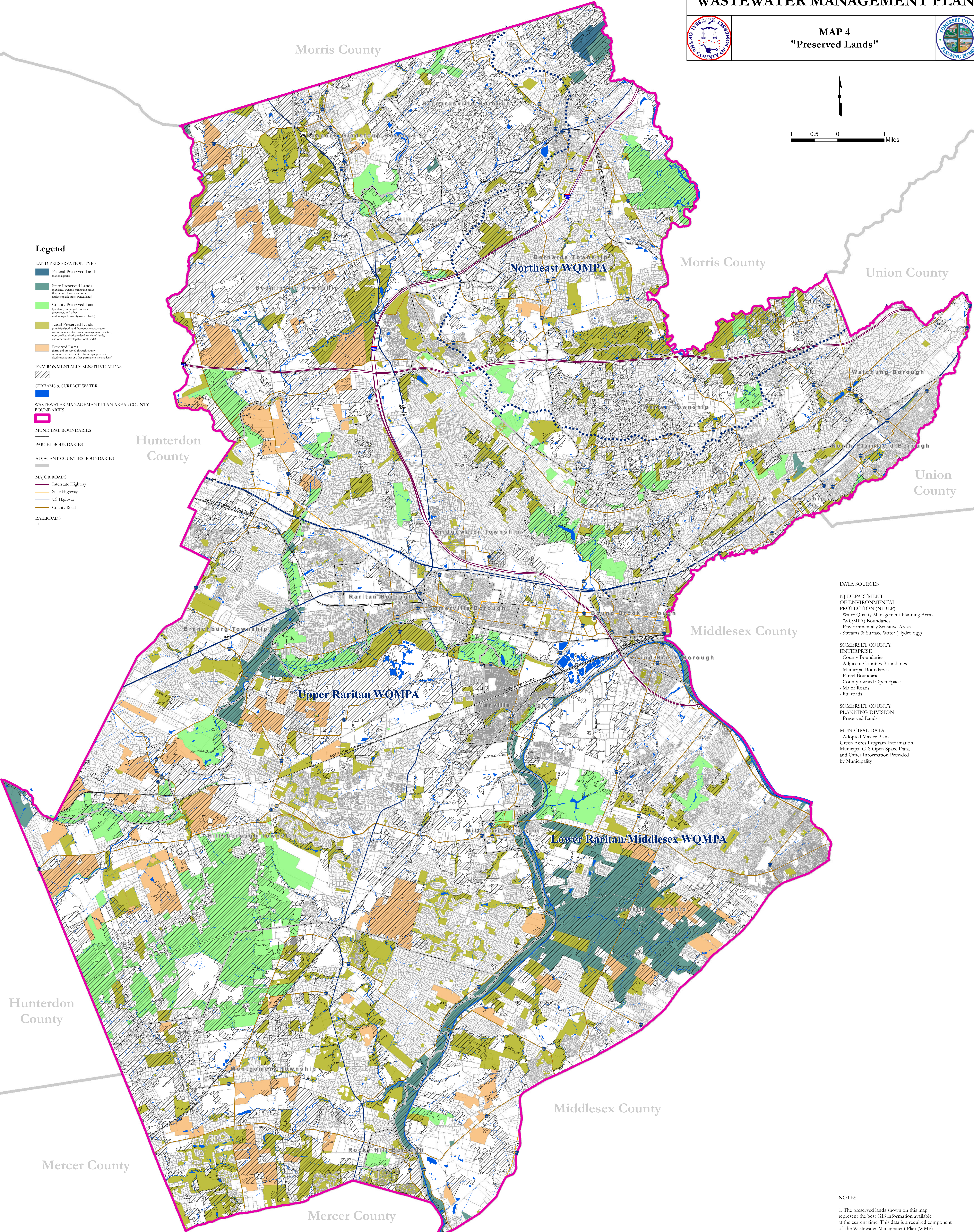


MAP 4
"Preserved Lands"



Legend

- LAND PRESERVATION TYPE:**
- Federal Preserved Lands (national parks)
- State Preserved Lands (publicly owned, wetland, riparian areas, flood control areas, and other undeveloped, non-forest lands)
- County Preserved Lands (publicly owned, golf courses, preserves, and other undeveloped, non-forest lands)
- Local Preserved Lands (municipal parkland, historical preservation areas, state, state or management facilities, non-profit and private deed-restricted lands, and other undeveloped, non-forest lands)
- Preserved Farms (land preserved through county or municipal ownership or fee simple purchase, deed restrictions or other permanent mechanisms)
- ENVIRONMENTALLY SENSITIVE AREAS**
-
- STREAMS & SURFACE WATER**
-
- WASTEWATER MANAGEMENT PLAN AREA / COUNTY BOUNDARIES**
-
- MUNICIPAL BOUNDARIES**
-
- PARCEL BOUNDARIES**
-
- ADJACENT COUNTIES BOUNDARIES**
-
- MAJOR ROADS**
- Interstate Highway
- State Highway
- US Highway
- County Road
- RAILROADS**
-



- DATA SOURCES**
- NJ DEPARTMENT OF ENVIRONMENTAL PROTECTION (NJDEP)
 - Water Quality Management Planning Areas (WQMPA) Boundaries
 - Environmentally Sensitive Areas
 - Streams & Surface Water (Hydrology)
- SOMERSET COUNTY ENTERPRISE:
 - County Boundaries
 - Adjacent Counties Boundaries
 - Municipal Boundaries
 - Parcel Boundaries
 - County-owned Open Space
 - Major Roads
 - Railroads
- SOMERSET COUNTY PLANNING DIVISION:
 - Preserved Lands
- MUNICIPAL DATA:
 - Adopted Master Plans
 - Green Acres Program Information
 - Municipal GIS Open Space Data
 - Other Information Provided by Municipality

- NOTES**
1. The preserved lands shown on this map represent the best GIS information available at the current time. This data is a required component of the Wastewater Management Plan (WMP) Build-out and Capacity Analysis.
 2. Somerset County uses the following map projections & coordinate system when presenting GIS data:
 - Horizontal: North American Datum 1983 (NAD83)
 - Vertical: North American Vertical Datum 1987 (NAVD87)
 - Coordinate System: New Jersey State Plane Feet