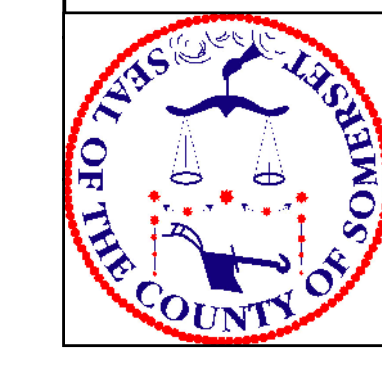
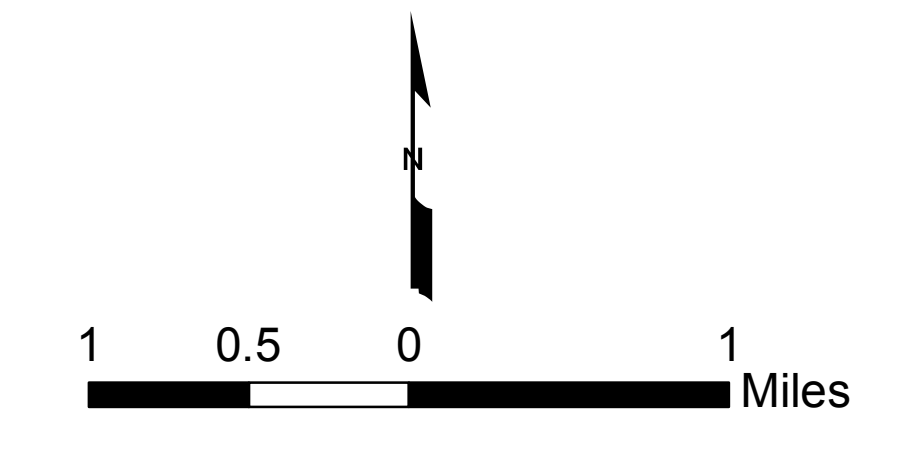


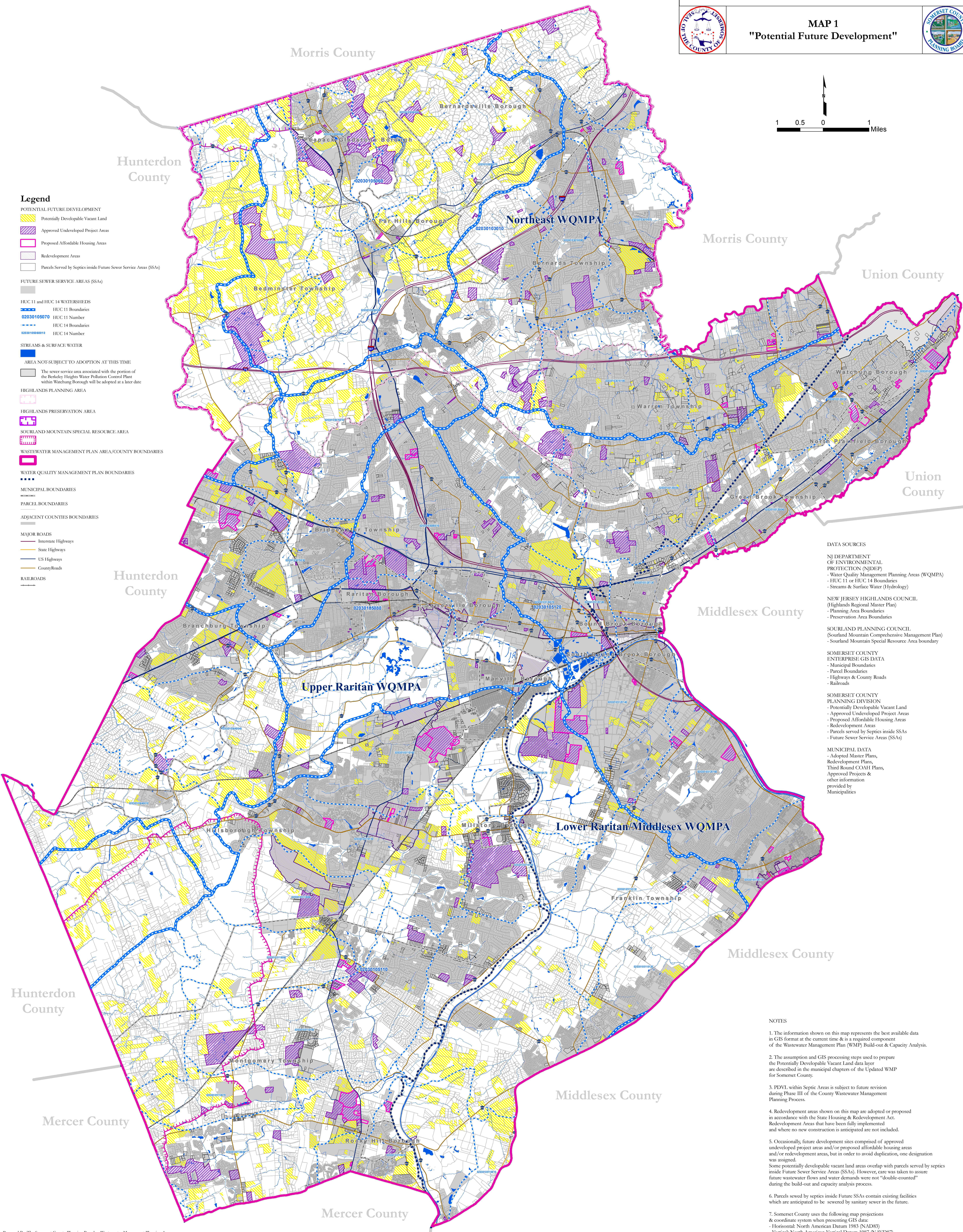
SOMERSET COUNTY, NJ WASTEWATER MANAGEMENT PLAN



MAP 1 "Potential Future Development"



- Legend**
- POTENTIAL FUTURE DEVELOPMENT**
 - Potentially Developable Vacant Land
 - Approved Undeveloped Project Areas
 - Proposed Affordable Housing Areas
 - Redevelopment Areas
 - Parcels Served by Septics inside Future Sewer Service Areas (SSAs)
 - FUTURE SEWER SERVICE AREAS (SSAs)**
 - Future Sewer Service Areas (SSAs)
 - HUC 11 and HUC 14 WATERSHEDS**
 - HUC 11 Boundaries
 - 02030105070 HUC 11 Number
 - HUC 14 Boundaries
 - 020301050010 HUC 14 Number
 - STREAMS & SURFACE WATER**
 - AREA NOT-SUBJECT TO ADOPTION AT THIS TIME
 - The sewer service area associated with the portion of the Berkeley Heights Water Pollution Control Plant within Watchung Borough will be adopted at a later date
 - HIGHLANDS PLANNING AREA**
 - Highlands Planning Area
 - HIGHLANDS PRESERVATION AREA**
 - Highlands Preservation Area
 - SOURLAND MOUNTAIN SPECIAL RESOURCE AREA**
 - Sourland Mountain Special Resource Area
 - WASTEWATER MANAGEMENT PLAN AREA/COUNTY BOUNDARIES**
 - Wastewater Management Plan Area/County Boundaries
 - WATER QUALITY MANAGEMENT PLAN BOUNDARIES**
 - Water Quality Management Plan Boundaries
 - MUNICIPAL BOUNDARIES**
 - Municipal Boundaries
 - PARCEL BOUNDARIES**
 - Parcel Boundaries
 - ADJACENT COUNTIES BOUNDARIES**
 - Adjacent Counties Boundaries
 - MAJOR ROADS**
 - Interstate Highways
 - State Highways
 - US Highways
 - County Roads
 - RAILROADS**
 - Railroads



- DATA SOURCES**
- NJ DEPARTMENT OF ENVIRONMENTAL PROTECTION (NJDEP)
 - Water Quality Management Planning Areas (WQMPA)
 - HUC 11 or HUC 14 Boundaries
 - Streams & Surface Water (Hydrology)
 - NEW JERSEY HIGHLANDS COUNCIL (Highlands Regional Master Plan)
 - Planning Area Boundaries
 - Preservation Area Boundaries
 - SOURLAND PLANNING COUNCIL (Sourland Mountain Comprehensive Management Plan)
 - Sourland Mountain Special Resource Area boundary
 - SOMERSET COUNTY ENTERPRISE GIS DATA
 - Municipal Boundaries
 - Parcel Boundaries
 - Highways & County Roads
 - Railroads
 - SOMERSET COUNTY PLANNING DIVISION
 - Potentially Developable Vacant Land
 - Approved Undeveloped Project Areas
 - Proposed Affordable Housing Areas
 - Redevelopment Areas
 - Parcels served by Septics inside SSAs
 - Future Sewer Service Areas (SSAs)
 - MUNICIPAL DATA
 - Adopted Master Plans
 - Redevelopment Plans
 - Third Round COAH Plans
 - Approved Projects & other information provided by Municipalities

- NOTES**
1. The information shown on this map represents the best available data in GIS format at the current time and is a required component of the Wastewater Management Plan (WMP) Build-out & Capacity Analysis.
 2. The assumption and GIS processing steps used to prepare the Potentially Developable Vacant Land data layer are described in the municipal chapters of the Updated WMP for Somerset County.
 3. PDVL within Septic Areas is subject to future revision during Phase III of the County Wastewater Management Planning Process.
 4. Redevelopment areas shown on this map are adopted or proposed in accordance with the State Housing & Redevelopment Act. Redevelopment Areas that have been fully implemented and where no new construction is anticipated are not included.
 5. Occasionally, future development sites comprised of approved undeveloped project areas and/or proposed affordable housing areas and/or redevelopment areas, but in order to avoid duplication, one designation was assigned. Some potentially developable vacant land areas overlap with parcels served by septic inside Future Sewer Service Areas (SSAs). However, care was taken to assure future wastewater flows and water demands were not "double-counted" during the build-out and capacity analysis process.
 6. Parcels sewed by septic inside Future SSAs contain existing facilities which are anticipated to be sewered by sanitary sewer in the future.
 7. Somerset County uses the following map projections & coordinate system when presenting GIS data:
 - Horizontal: North American Datum 1983 (NAD83)
 - Vertical: North American Vertical Datum 1987 (NAVD87)
 - Coordinate System: New Jersey State Plane Feet