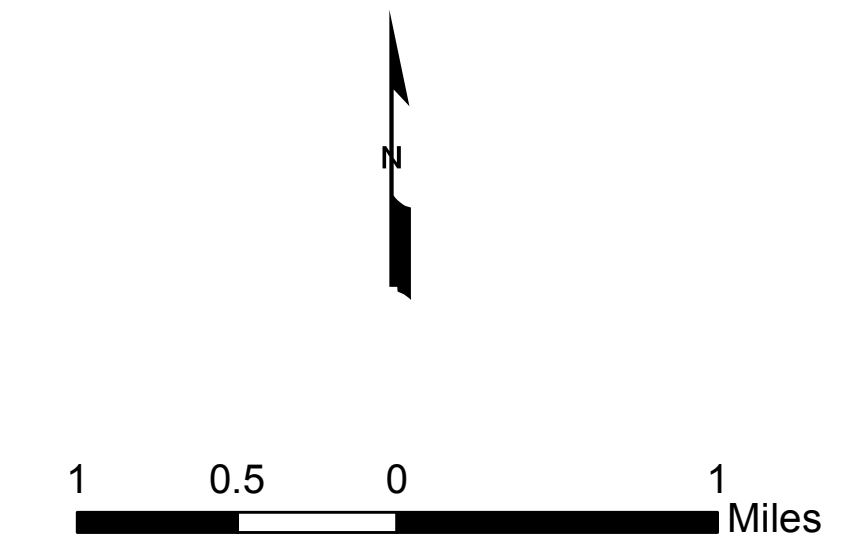
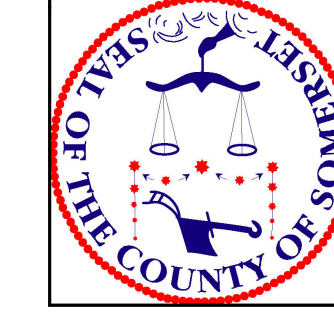
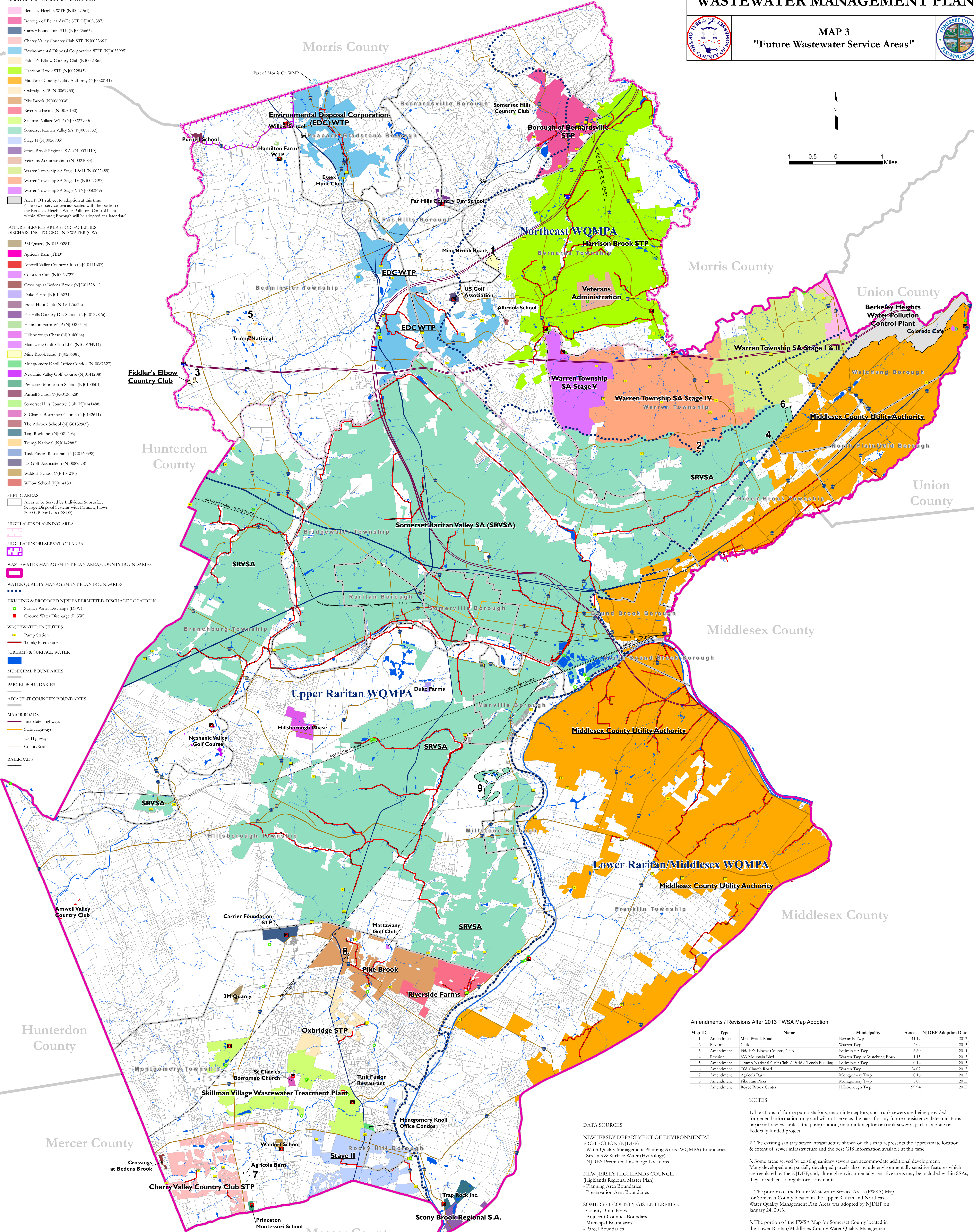


SOMERSET COUNTY, NJ
WASTEWATER MANAGEMENT PLAN

MAP 3
"Future Wastewater Service Areas"



- Legend**
- FUTURE SERVICE AREAS FOR FACILITIES DISCHARGING TO SURFACE WATER (SW)**
- Berkeley Heights WTP (NJ0027961)
 - Borough of Bernardsville STP (NJ0026387)
 - Carrier Foundation STP (NJ0023663)
 - Cherry Valley Country Club STP (NJ0023663)
 - Environmental Disposal Corporation WTP (NJ0039995)
 - Fiddler's Elbow Country Club (NJ0021865)
 - Harrison Brook STP (NJ0022845)
 - Middlesex County Utility Authority (NJ0020144)
 - Oxbridge STP (NJ0067733)
 - Pike Brook (NJ0060038)
 - Riverside Farms (NJ0050130)
 - Skillman Village WTP (NJ0022390)
 - Somerset Raritan Valley SA (NJ0067733)
 - Stage II (NJ0026995)
 - Stony Brook Regional S.A. (NJ0031119)
 - Veterans Administration (NJ0021083)
 - Warren Township SA Stage I & II (NJ002489)
 - Warren Township SA Stage IV (NJ0022497)
 - Warren Township SA Stage V (NJ0050369)
 - Area NOT subject to adoption at this time (The sewer service area associated with the portion of the Berkeley Heights Water Pollution Control Plant within Watchung Borough will be adopted at a later date)
- FUTURE SERVICE AREAS FOR FACILITIES DISCHARGING TO GROUND WATER (GW)**
- 3M Quarry (NJ01300281)
 - Agricola Barn (TBD)
 - Amwell Valley Country Club (NJG0141607)
 - Colorado Cafe (NJ0026727)
 - Crossings at Bedens Brook (NJG0132811)
 - Duke Farms (NJ0145831)
 - Essex Hunt Club (NJG0176532)
 - Far Hills Country Day School (NJG0127876)
 - Hamilton Farm WTP (NJ0087343)
 - Hillsborough Chase (NJ0140664)
 - Mattawang Golf Club LLC (NJG0134911)
 - Mine Brook Road (NJ0266881)
 - Montgomery Knoll Office Condos (NJ0087327)
 - Neshanic Valley Golf Course (NJ0141208)
 - Princeton Montessori School (NJ0100501)
 - Purnell School (NJG0136328)
 - Somerset Hills Country Club (NJ0141488)
 - St Charles Borromeo Church (NJ0142611)
 - The Albrook School (NJG0132969)
 - Trap Rock Inc. (NJ0081295)
 - Trump National (NJ0142883)
 - Tusk Fusion Restaurant (NJG0105998)
 - US Golf Association (NJ0087378)
 - Waldorf School (NJ0134210)
 - Willow School (NJ0141801)
- SEPTIC AREAS**
- Areas to be Served by Individual Subsurface Sewage Disposal Systems with Planning Floors 2000 GPD or Less (ISSDS)
- HIGHLANDS PLANNING AREA**
- HIGHLANDS PRESERVATION AREA**
- WASTEWATER MANAGEMENT PLAN AREA/COUNTY BOUNDARIES**
- WATER QUALITY MANAGEMENT PLAN BOUNDARIES**
- EXISTING & PROPOSED NJDES PERMITTED DISCHARGE LOCATIONS**
- Surface Water Discharge (DSW)
 - Ground Water Discharge (DGW)
- WASTEWATER FACILITIES**
- Pump Station
 - Trunk/Interceptor
- STREAMS & SURFACE WATER**
- MUNICIPAL BOUNDARIES**
- PARCEL BOUNDARIES**
- ADJACENT COUNTIES BOUNDARIES**
- MAJOR ROADS**
- Interstate Highways
 - State Highways
 - US Highways
 - County Roads
- RAILROADS**



Amendments / Revisions After 2013 FWSA Map Adoption

Map ID	Type	Name	Municipality	Acres	NJDEP Adoption Date
1	Amendment	Mine Brook Road	Bernards Twp	41.19	2013
2	Revision	Ciafo	Warren Twp	2.09	2013
3	Amendment	Fiddler's Elbow Country Club	Bedminster Twp	6.60	2014
4	Revision	833 Mountain Blvd	Warren Twp & Watchung Boro	1.15	2015
5	Amendment	Trump National Golf Club / Paddle Tennis Building	Bedminster Twp	0.14	2015
6	Amendment	Old Church Road	Warren Twp	24.02	2015
7	Amendment	Agricola Barn	Montgomery Twp	0.16	2015
8	Amendment	Pike Run Plaza	Montgomery Twp	8.09	2015
9	Amendment	Royce Brook Center	Hillsborough Twp	99.94	2015

- NOTES**
- Locations of future pump stations, major interceptors, and trunk sewers are being provided for general information only and will not serve as the basis for any future consistency determinations or permit reviews unless the pump station, major interceptor or trunk sewer is part of a State or Federally funded project.
 - The existing sanitary sewer infrastructure shown on this map represents the approximate location & extent of sewer infrastructure and the best GIS information available at this time.
 - Some areas served by existing sanitary sewers can accommodate additional development. Many developed and partially developed parcels also include environmentally sensitive features which are regulated by the NJDEP; and, although environmentally sensitive areas may be included within SSAs, they are subject to regulatory constraints.
 - The portion of the Future Wastewater Service Areas (FWSA) Map for Somerset County located in the Upper Raritan and Northeast Water Quality Management Plan Areas was adopted by NJDEP on January 24, 2013.
 - The portion of the FWSA Map for Somerset County located in the Lower Raritan/Middlesex County Water Quality Management Plan Area was adopted by NJDEP on March 5, 2013.
 - Somerset County uses the following map projection & coordinate system when presenting GIS data:
 - Horizontal: North American Datum 1983 (NAD83)
 - Vertical: North American Vertical Datum 1987 (NAVD87)
 - Coordinate System: New Jersey State Plane Feet

- DATA SOURCES**
- NEW JERSEY DEPARTMENT OF ENVIRONMENTAL PROTECTION (NJDEP)**
- Water Quality Management Planning Areas (WQMPA) Boundaries
 - Streams & Surface Water (Hydrology)
 - NJDES Permitted Discharge Locations
- NEW JERSEY HIGHLANDS COUNCIL (Highlands Regional Master Plan)**
- Planning Area Boundaries
 - Preservation Area Boundaries
- SOMERSET COUNTY GIS ENTERPRISE**
- County Boundaries
 - Adjacent Counties Boundaries
 - Municipal Boundaries
 - Parcel Boundaries
 - Major Roads
 - Railroads
- SOMERSET COUNTY PLANNING DIVISION**
- Future Service Areas for Facilities Discharging to Surface Water and Groundwater
 - Wastewater Facilities