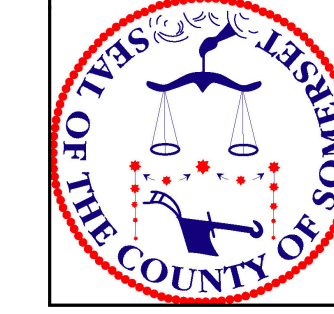
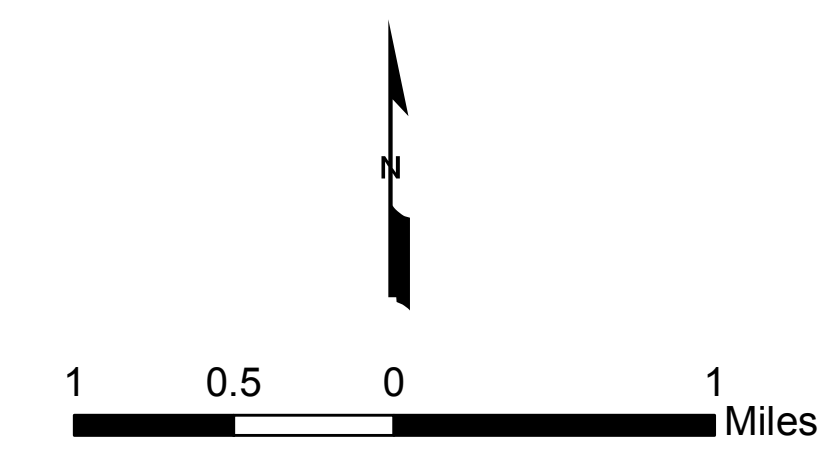
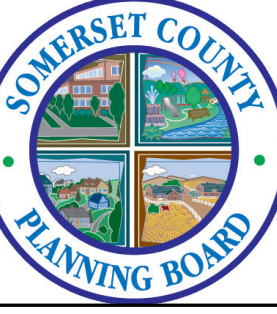


SOMERSET COUNTY, NJ
WASTEWATER MANAGEMENT PLAN



MAP 8
"Wetlands"



Legend

WETLANDS CLASSIFICATION

- Agricultural Wetland (Modified)
- Cemetery on Wetland
- Coniferous Scrub/Shrub Wetland
- Coniferous Wooded Wetland
- Deciduous Scrub/Shrub Wetland
- Deciduous Wooded Wetland
- Disturbed Wetland (Modified)
- Former Ag. Wetland (Becoming Shrubby, Not-built-up)
- Freshwater Tidal Marshes
- Herbaceous Wetland
- Managed Wetland in Built-up Maintained Rec. Area
- Managed Wetland in Maintained Lawn Greenspace
- Mixed Scrub/Shrub Wetland (Coniferous Dom.)
- Mixed Scrub/Shrub Wetland (Deciduous Dom.)
- Mixed Wooded Wetland (Coniferous Dom.)
- Mixed Wooded Wetland (Deciduous Dom.)
- Phragmites Dominate Interior Wetland
- Unvegetated Flats
- Wetland Rights-Of-Way

STREAMS & SURFACE WATER

- Streams

WATER QUALITY MANAGEMENT PLAN BOUNDARIES

- Boundaries

WASTEWATER MANAGEMENT PLAN AREA / COUNTY BOUNDARIES

- Boundaries

MUNICIPAL BOUNDARIES

- Boundaries

PARCEL BOUNDARIES

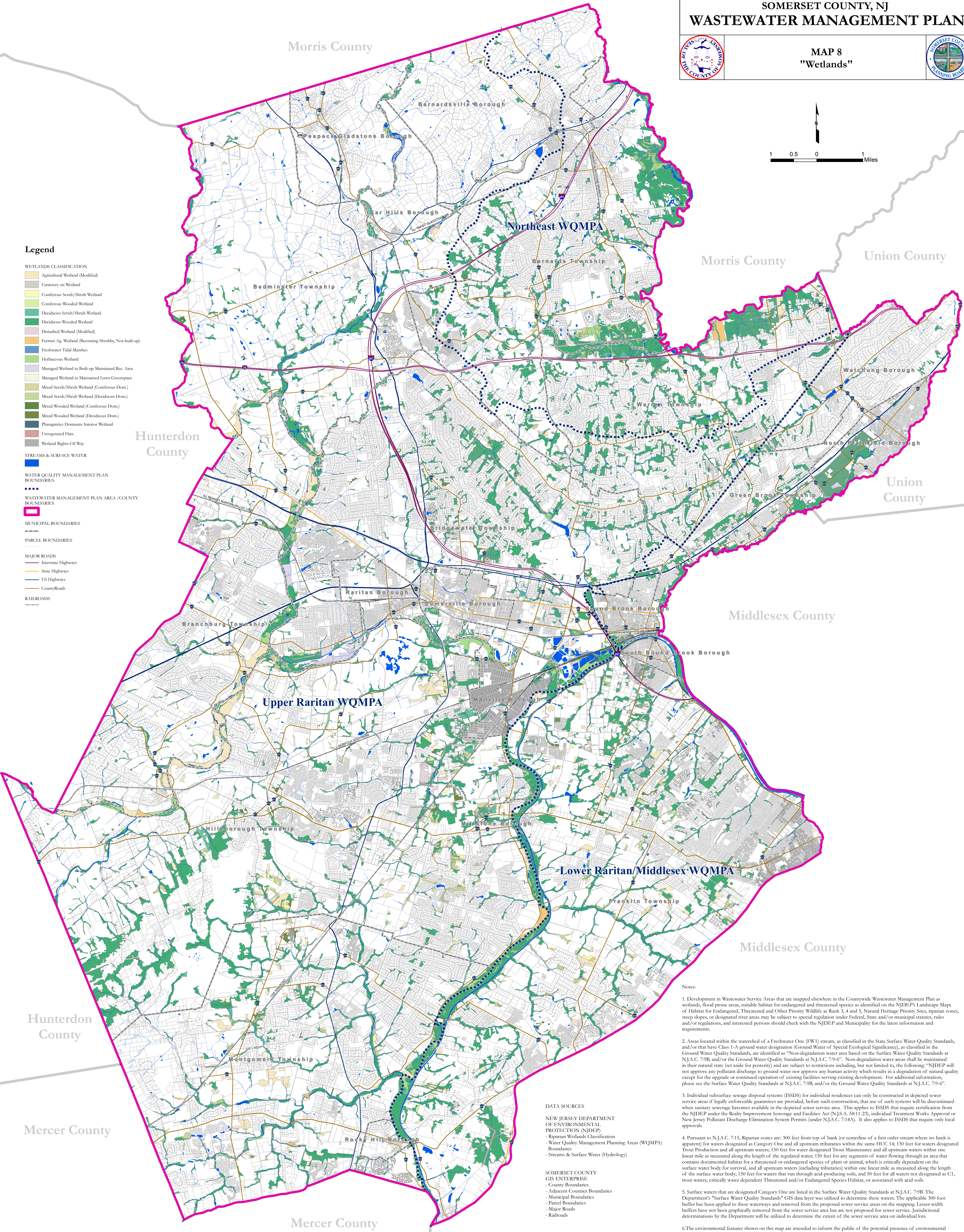
- Boundaries

MAJOR ROADS

- Interstate Highways
- State Highways
- US Highways
- County Roads

RAILROADS

- Boundaries



Notes:

1. Development in Wastewater Service Areas that are mapped elsewhere in the Countywide Wastewater Management Plan as wetlands, flood prone areas, suitable habitat for endangered and threatened species as identified on the NJDEP's Landscape Maps of Habitat for Endangered, Threatened and Other Priority Wildlife as Rank 3, 4 and 5, Natural Heritage Priority Sites, riparian zones, steep slopes, or designated river areas may be subject to special regulation under Federal, State and/or municipal statutes, rules and/or regulations, and interested persons should check with the NJDEP and Municipality for the latest information and requirements.
2. Areas located within the watershed of a Freshwater One (FW1) stream, as classified in the State Surface Water Quality Standards, and/or that have Class 1-A ground water designation (Ground Water of Special Ecological Significance), as classified in the Ground Water Quality Standards, are identified as "Non-degradation water area based on the Surface Water Quality Standards at N.J.A.C. 7:9B and/or the Ground Water Quality Standards at N.J.A.C. 7:9-6". Non-degradation water areas shall be maintained in their natural state (set aside for posterity) and are subject to restrictions including, but not limited to, the following: "NJDEP will not approve any pollutant discharge to ground water nor approve any human activity which results in a degradation of natural quality except for the upgrade or continued operation of existing facilities serving existing development. For additional information, please see the Surface Water Quality Standards at N.J.A.C. 7:9B and/or the Ground Water Quality Standards at N.J.A.C. 7:9-6".
3. Individual subsurface sewage disposal systems (ISSDS) for individual residences can only be constructed in depicted sewer service areas if legally enforceable guarantees are provided, before such construction, that use of such systems will be discontinued when sanitary sewerage becomes available in the depicted sewer service area. This applies to ISSDS that require certification from the NJDEP under the Realty Improvement Sewerage and Facilities Act (N.J.S.A. 58:11-23), individual Treatment Works Approval or New Jersey Pollutant Discharge Elimination System Permits (under N.J.A.C. 7:14A). It also applies to ISSDS that require only local approvals.
4. Pursuant to N.J.A.C. 7:15, Riparian zones are: 300 feet from top of bank (or centerline of a first order stream where no bank is apparent) for waters designated as Category One and all upstream tributaries within the same HUC 14; 150 feet for waters designated " Trout Production and all upstream waters; 150 feet for water designated Trout Maintenance and all upstream waters within one linear mile as measured along the length of the regulated water; 150 feet for any segments of water flowing through an area that contains documented habitat for a threatened or endangered species of plant or animal, which is critically dependent on the surface water body for survival, and all upstream waters (including tributaries) within one linear mile as measured along the length of the surface water body; 150 feet for waters that run through acid-producing soils, and 50 feet for all waters not designated as C1, trout waters, critically water dependent "Threatened and/or Endangered Species Habitat, or associated with acid soils.
5. Surface waters that are designated Category One are listed in the Surface Water Quality Standards at N.J.A.C. 7:9B. The Department's "Surface Water Quality Standards" GIS data layer was utilized to determine these waters. The applicable 300 foot buffer has been applied to these waterways and removed from the proposed sewer service areas on the mapping. Lesser width buffers have not been graphically removed from the sewer service area but are not proposed for sewer service. Jurisdictional determinations by the Department will be utilized to determine the extent of the sewer service area on individual lots.
6. The environmental features shown on this map are intended to inform the public of the potential presence of environmental features for which State and Federal rules and regulations may apply. Site-specific analysis and verification of the location and presence of these features are required as part of the permit review and approval processes that precede any land development activities.
7. Somerset County uses the following map projection & coordinate system when presenting GIS data:
 - Horizontal: North American Datum 1983 (NAD83)
 - Vertical: North American Vertical Datum 1987 (NAVD87)
 - Coordinate System: New Jersey State Plane Feet

DATA SOURCES

- NEW JERSEY DEPARTMENT OF ENVIRONMENTAL PROTECTION (NJDEP)
- Riparian Wetlands Classification
 - Water Quality Management Planning Areas (WQMPA) Boundaries
 - Streams & Surface Water (Hydrology)
- SOMERSET COUNTY GIS ENTERPRISE
- County Boundaries
 - Adjacent Counties Boundaries
 - Municipal Boundaries
 - Parcel Boundaries
 - Major Roads
 - Railroads